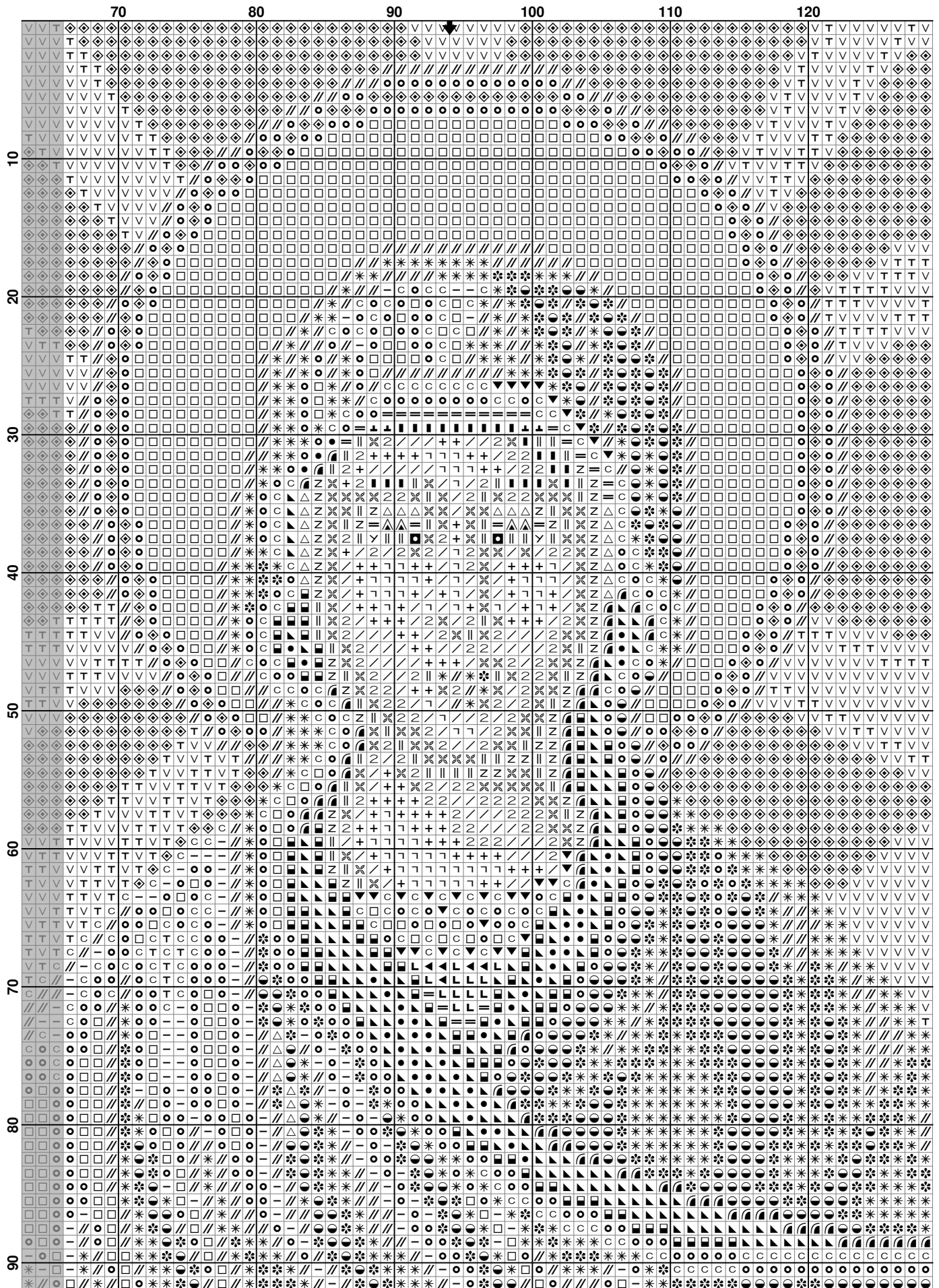
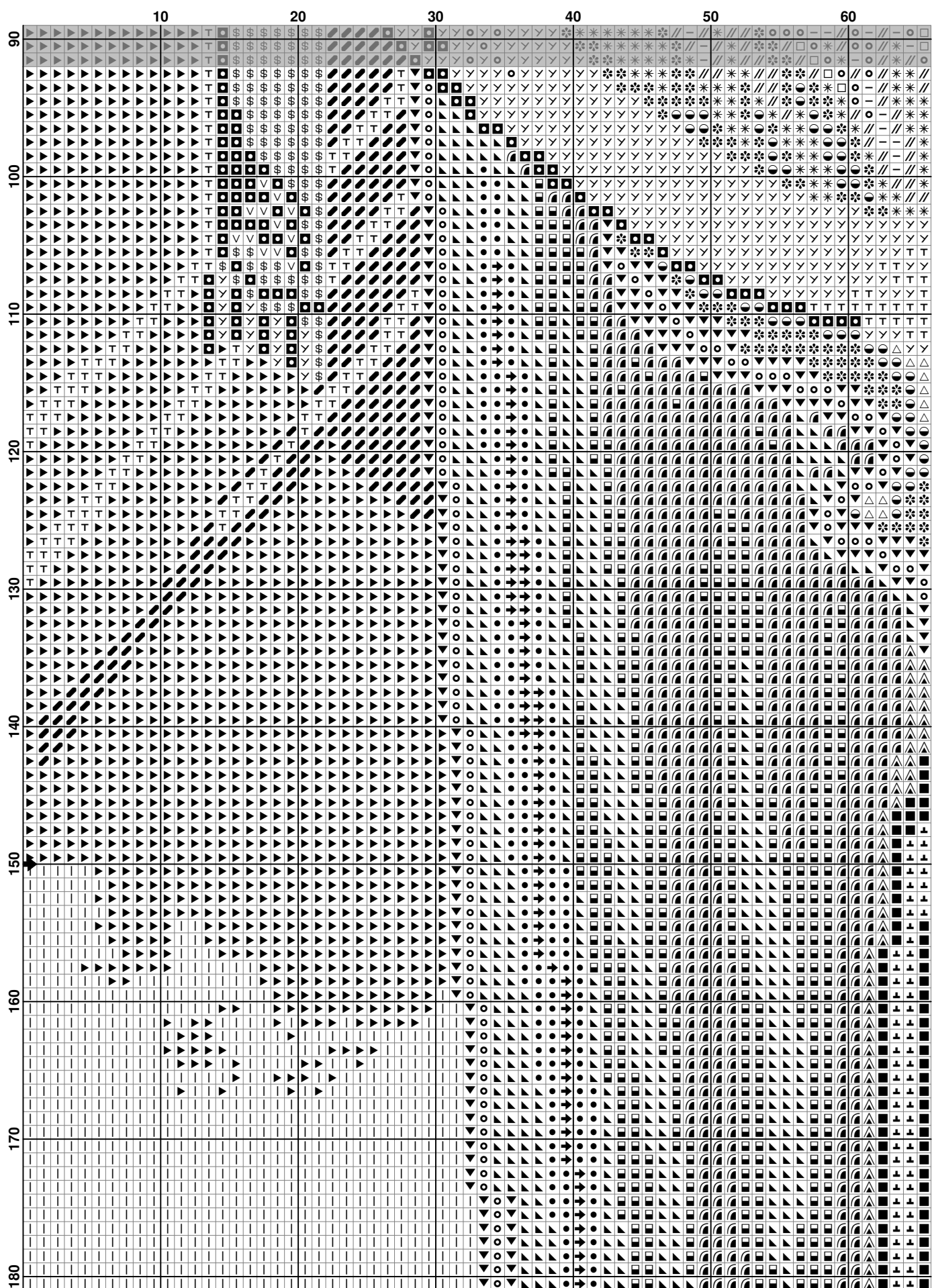
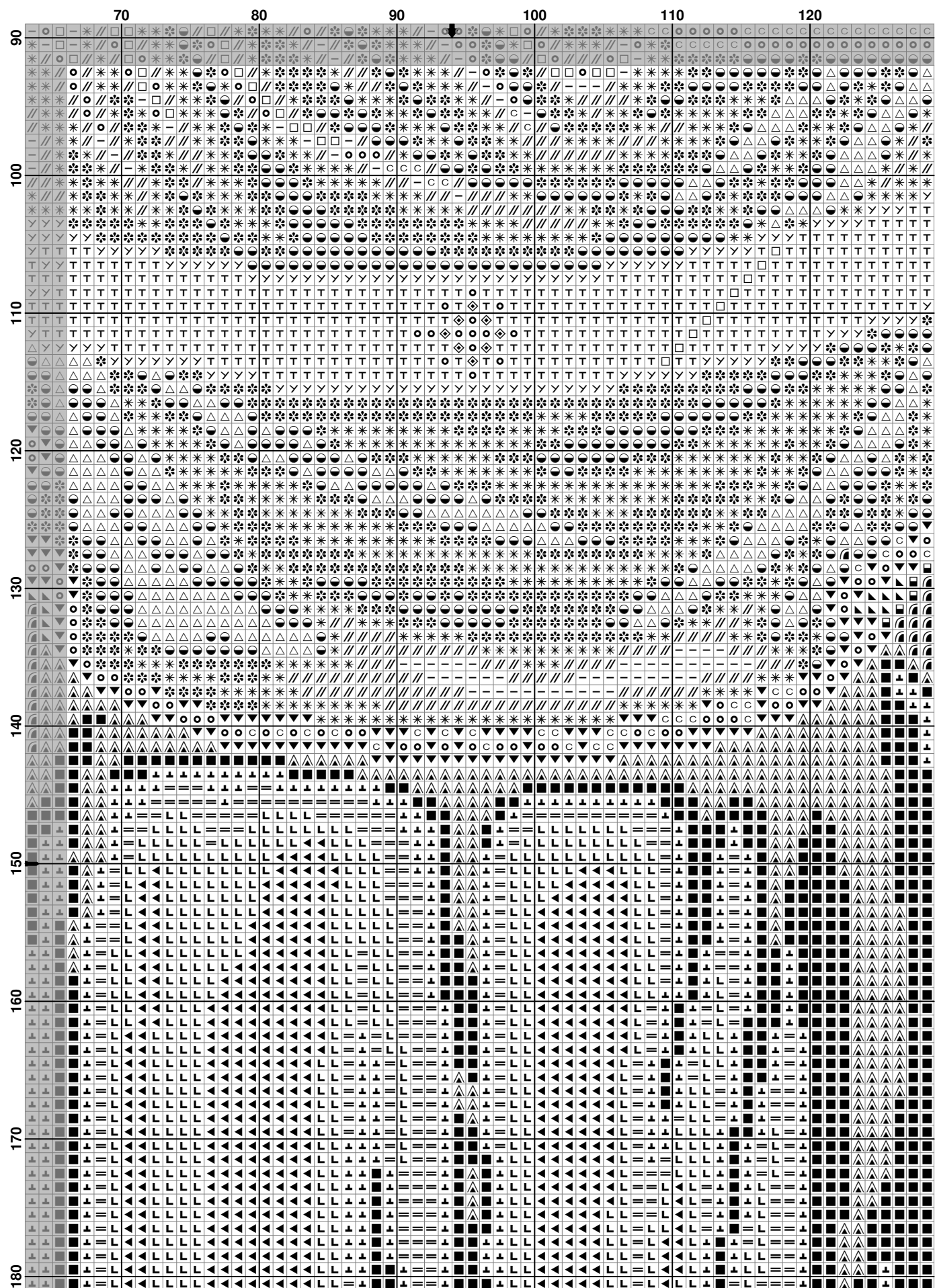


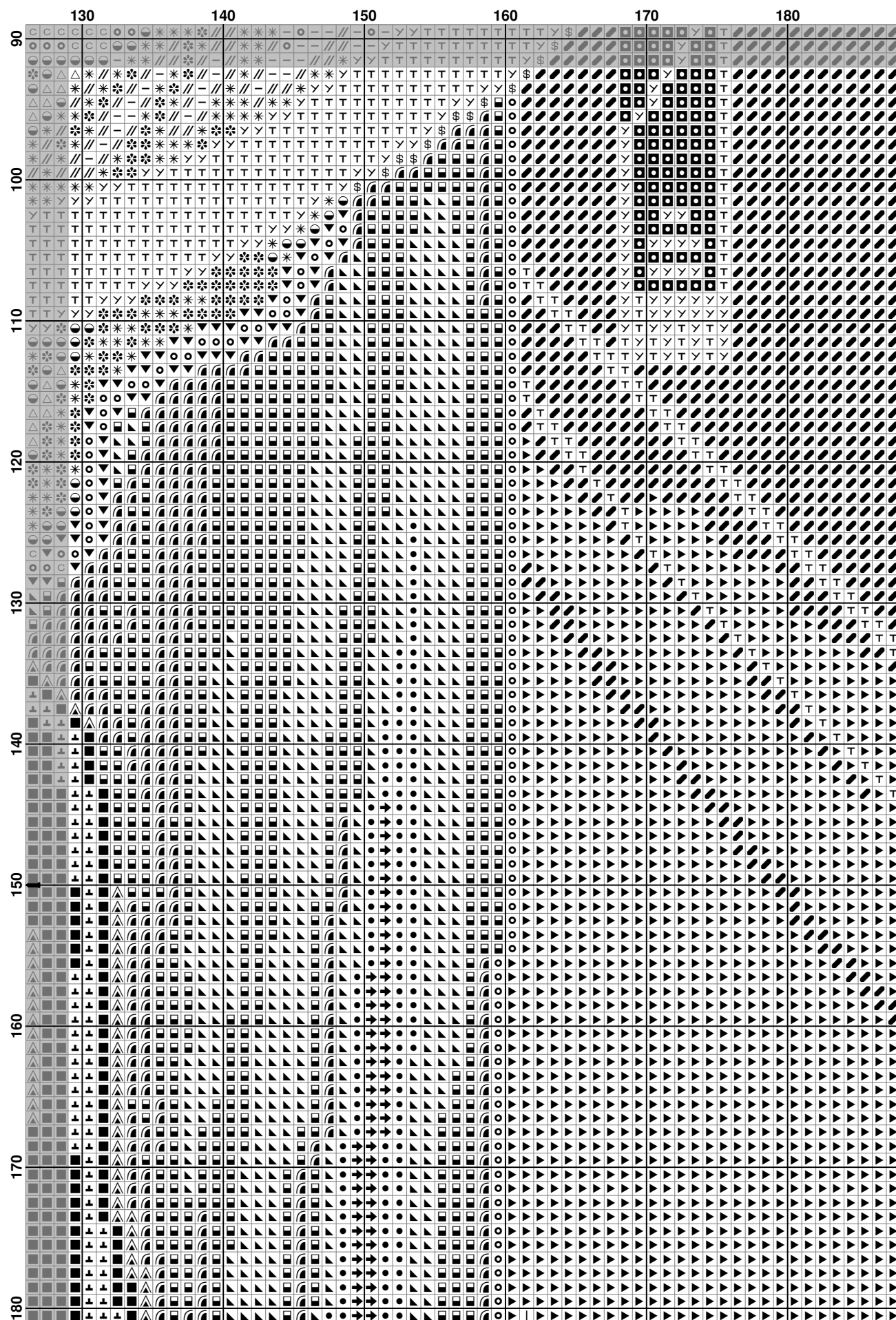
The figure displays a large grid of 100 rows and 60 columns. The rows are labeled 10 to 60 on the left side, and the columns are labeled 10 to 60 on the top side. The grid contains various symbols, including letters (H, T, Y, V), numbers (2), and special characters (slashes, asterisks, dollar signs, etc.). The symbols are arranged in a complex, repeating pattern across the grid.

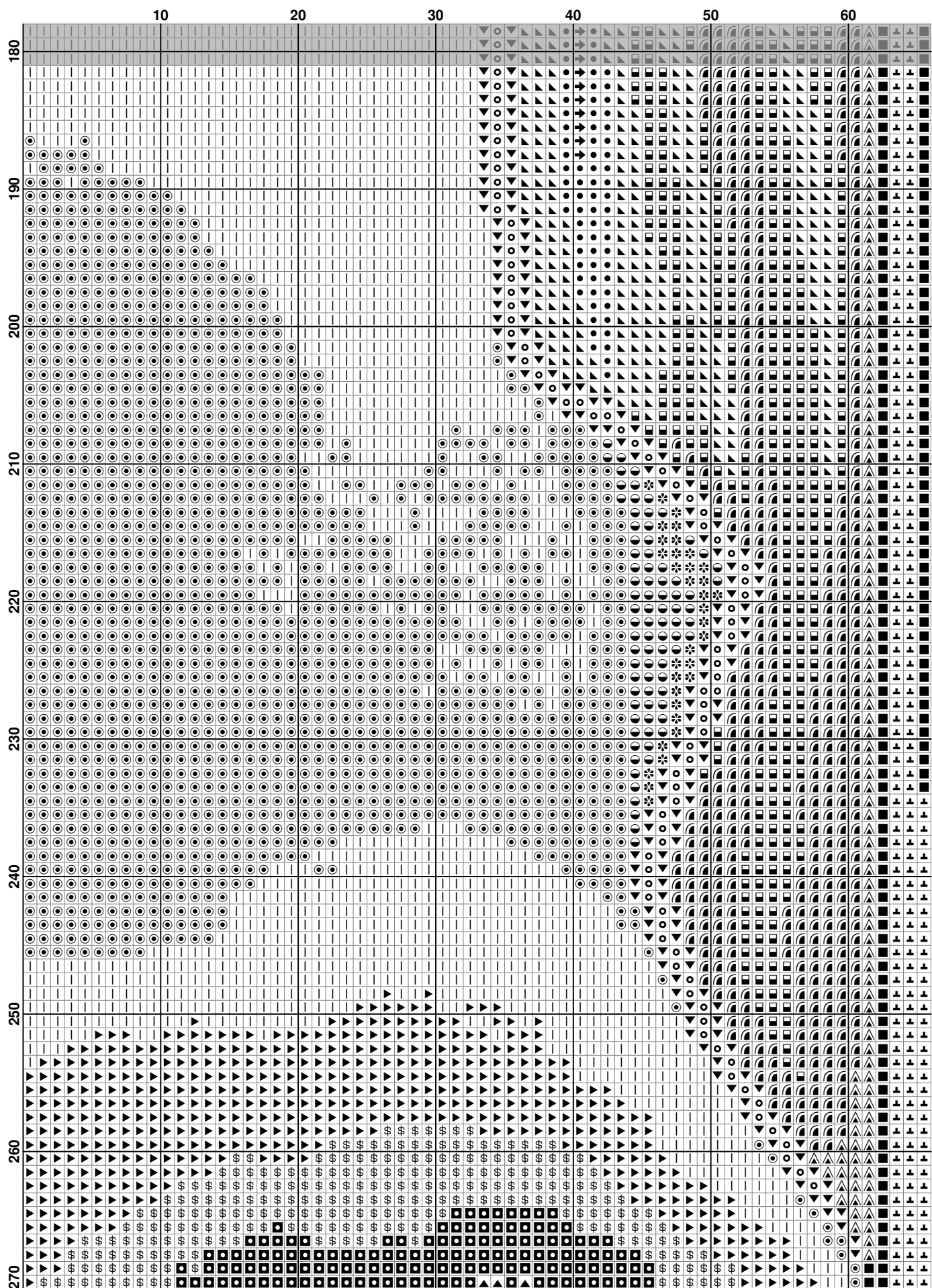


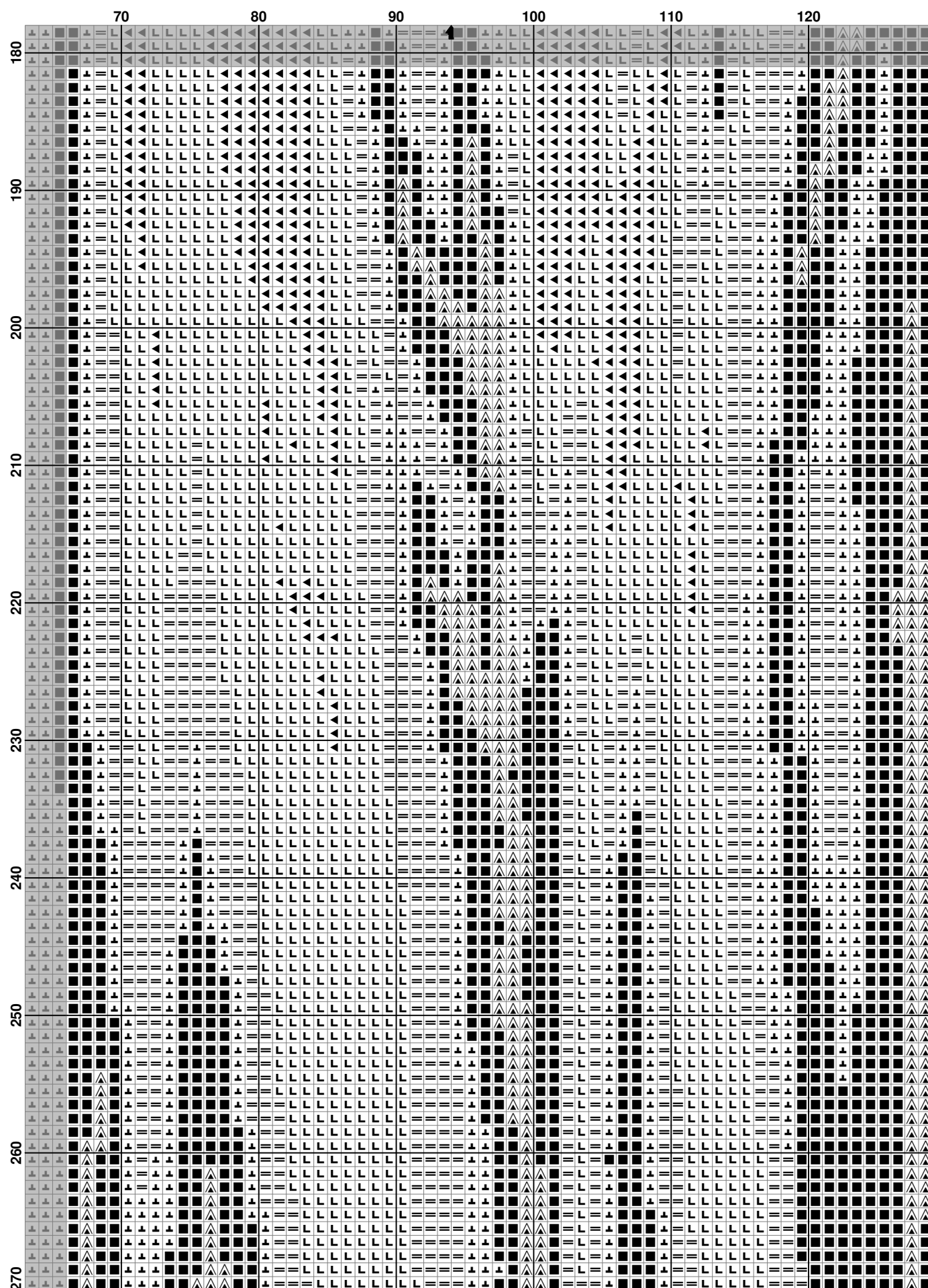
(6)

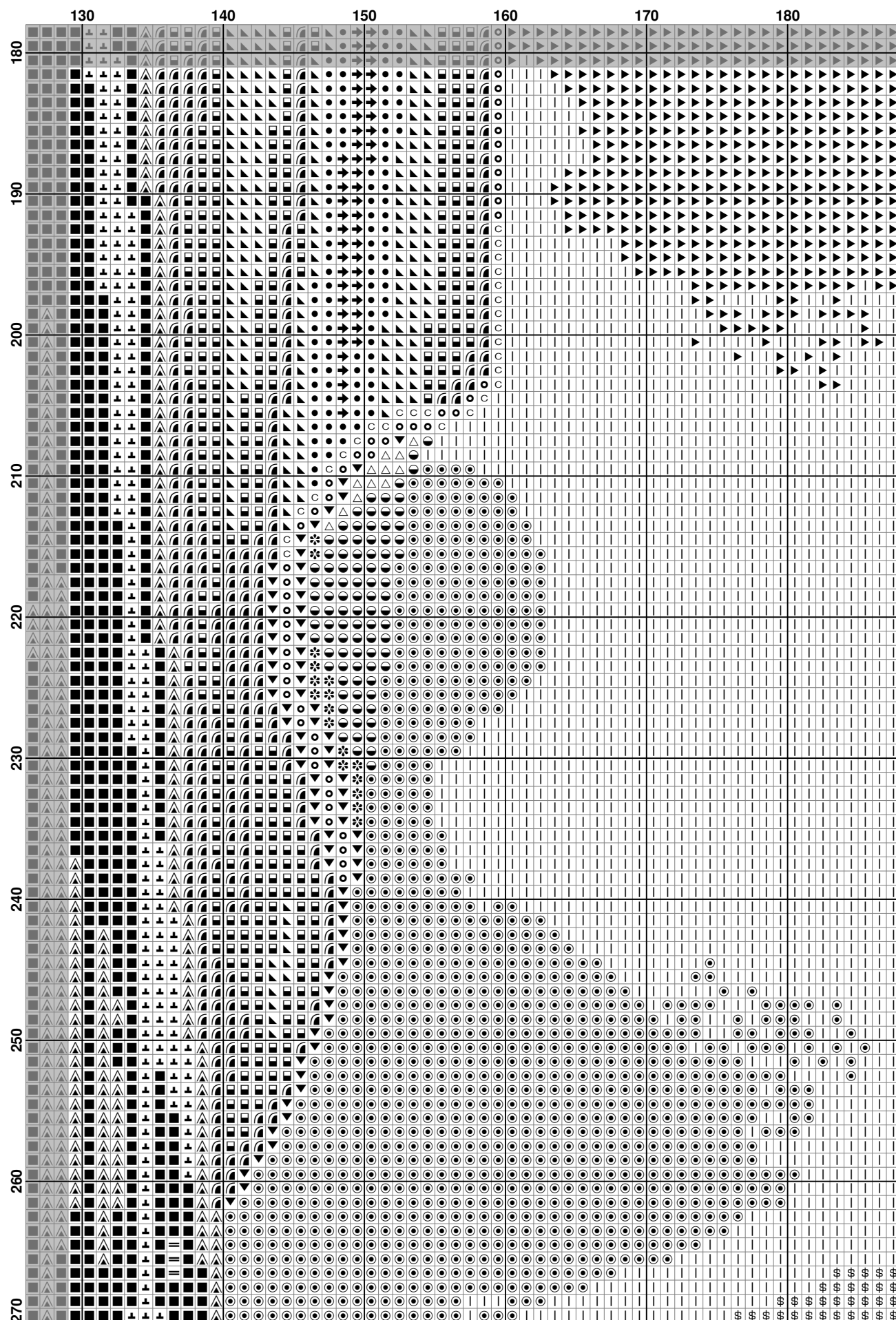




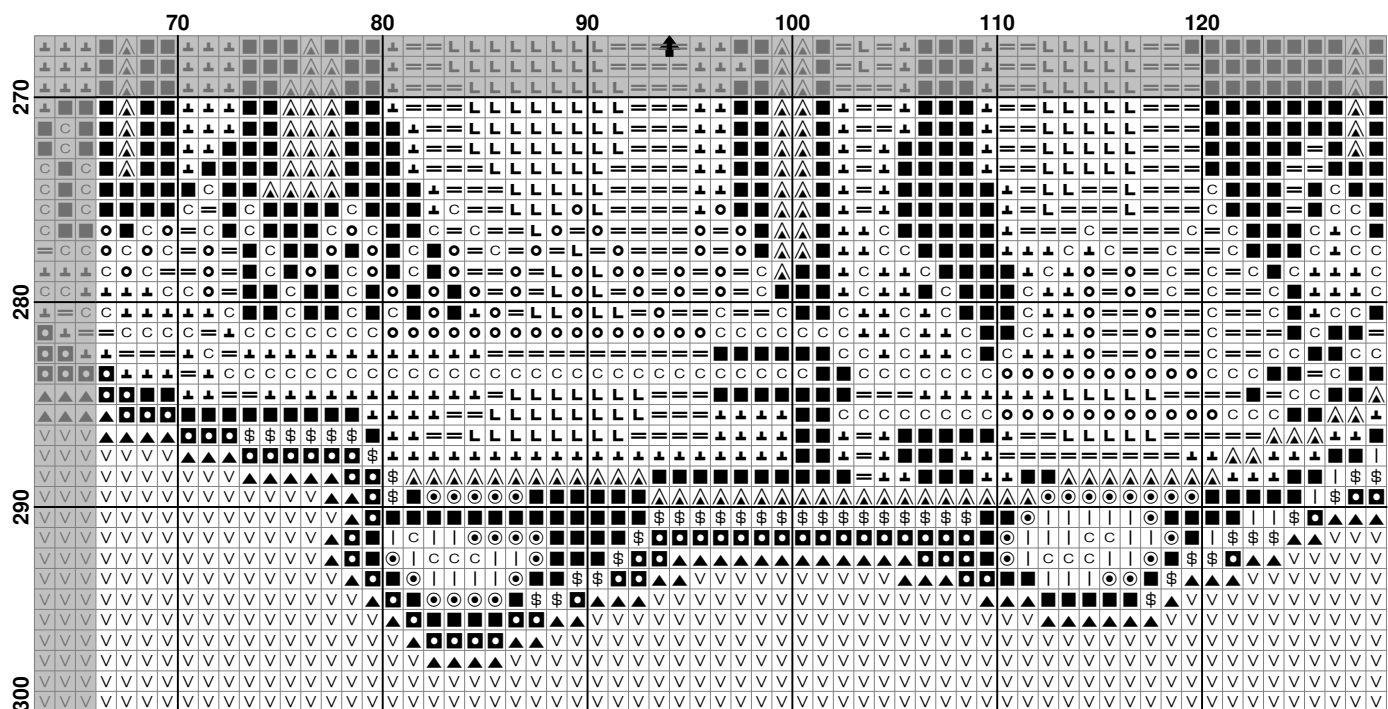




















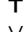

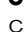


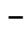


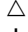
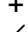

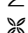





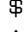


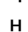


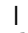





[illegible]



[illegible]

Pattern Name: Покрова Пресвятої Богородиці
Designed By: Ginokardia
Company: Dani
Fabric: Aida 14, White
 188w X 300h Stitches
Size: 14 Count, 34.11w X 54.43h cm

Floss Used for Full Stitches:

Symbol	Strands	Type	Number	Color
	2	Anchor	22	Burgundy VY DK
	2	Anchor	44	Carmin Rose DK
	2	Anchor	47	Carmin Red
	2	Anchor	150	Delft Blue DK
	2	Anchor	152	Delft Blue VY DK
	2	Anchor	167	Surf Blue VY LT
	2	Anchor	168	Surf Blue LT
	2	Anchor	169	Surf Blue Med
	2	Anchor	170	Surf Blue DK
	2	Anchor	242	Grass Green Med LT
	2	Anchor	244	Grass Green Med DK
	2	Anchor	245	Grass Green DK
	2	Anchor	246	Grass Green VY DK
	2	Anchor	275	Citrus UL LT
	2	Anchor	300	Citrus LT
	2	Anchor	305	Topaz LT
	2	Anchor	306	Topaz Med LT
	2	Anchor	307	Topaz Med
	2	Anchor	309	Topaz DK
	2	Anchor	324	Apricot Med
	2	Anchor	326	Apricot DK
	2	Anchor	358	Coffee
	2	Anchor	360	Coffee DK
	2	Anchor	366	Spice VY LT
	2	Anchor	367	Spice LT
	2	Anchor	368	Spice Med LT
	2	Anchor	369	Spice Med
	2	Anchor	370	Spice Med DK
	2	Anchor	371	Spice DK
	2	Anchor	386	Citrus VY LT
	2	Anchor	847	Blue Mist VY LT
	2	Anchor	848	Blue Mist
	2	Anchor	849	Blue Mist Med LT
	2	Anchor	890	Brass LT
	2	Anchor	922	Denim DK
	2	Anchor	1010	Cinnamon VY LT
	2	Anchor	1031	Antique Blue UL LT
	2	Anchor	1032	Antique Blue VY LT
	2	Anchor	1033	Antique Blue LT
	2	Anchor	1034	Antique Blue MD
	2	Anchor	1044	Grass Green UL DK

Usage Summary**Strands Per Skein:** 6**Skein Length:** 795.0 cm

Type	Number	Full	Half	Quarter	Petite	Back(cm)	Str(cm)	Spec(cm)	French	Bead	Skein Est
Anchor 22	1055	0	0	0	0	0.0	0.0	0.0	0	0	1.000
Anchor 44	1217	0	0	0	0	0.0	0.0	0.0	0	0	1.000
Anchor 47	1254	0	0	0	0	0.0	0.0	0.0	0	0	1.000
Anchor 150	3032	0	0	0	0	0.0	0.0	0.0	0	0	2.000
Anchor 152	1195	0	0	0	0	0.0	0.0	0.0	0	0	1.000
Anchor 167	880	0	0	0	0	0.0	0.0	0.0	0	0	1.000
Anchor 168	2290	0	0	0	0	0.0	0.0	0.0	0	0	1.000
Anchor 169	1693	0	0	0	0	0.0	0.0	0.0	0	0	1.000
Anchor 170	1884	0	0	0	0	0.0	0.0	0.0	0	0	1.000
Anchor 242	200	0	0	0	0	0.0	0.0	0.0	0	0	1.000
Anchor 244	571	0	0	0	0	0.0	0.0	0.0	0	0	1.000
Anchor 245	1889	0	0	0	0	0.0	0.0	0.0	0	0	1.000
Anchor 246	2241	0	0	0	0	0.0	0.0	0.0	0	0	1.000
Anchor 275	2047	0	0	0	0	0.0	0.0	0.0	0	0	1.000
Anchor 300	3326	0	0	0	0	0.0	0.0	0.0	0	0	2.000
Anchor 305	1253	0	0	0	0	0.0	0.0	0.0	0	0	1.000
Anchor 306	511	0	0	0	0	0.0	0.0	0.0	0	0	1.000
Anchor 307	937	0	0	0	0	0.0	0.0	0.0	0	0	1.000
Anchor 309	636	0	0	0	0	0.0	0.0	0.0	0	0	1.000
Anchor 324	313	0	0	0	0	0.0	0.0	0.0	0	0	1.000
Anchor 326	884	0	0	0	0	0.0	0.0	0.0	0	0	1.000
Anchor 358	54	0	0	0	0	0.0	0.0	0.0	0	0	1.000
Anchor 360	304	0	0	0	0	0.0	0.0	0.0	0	0	1.000
Anchor 366	166	0	0	0	0	0.0	0.0	0.0	0	0	1.000
Anchor 367	186	0	0	0	0	0.0	0.0	0.0	0	0	1.000
Anchor 368	126	0	0	0	0	0.0	0.0	0.0	0	0	1.000
Anchor 369	133	0	0	0	0	0.0	0.0	0.0	0	0	1.000
Anchor 370	78	0	0	0	0	0.0	0.0	0.0	0	0	1.000
Anchor 371	53	0	0	0	0	0.0	0.0	0.0	0	0	1.000
Anchor 386	1704	0	0	0	0	0.0	0.0	0.0	0	0	1.000
Anchor 847	2310	0	0	0	0	0.0	0.0	0.0	0	0	1.000
Anchor 848	2016	0	0	0	0	0.0	0.0	0.0	0	0	1.000
Anchor 849	890	0	0	0	0	0.0	0.0	0.0	0	0	1.000
Anchor 890	921	0	0	0	0	0.0	0.0	0.0	0	0	1.000
Anchor 922	2953	0	0	0	0	0.0	0.0	0.0	0	0	2.000
Anchor 1010	63	0	0	0	0	0.0	0.0	0.0	0	0	1.000
Anchor 1031	2271	0	0	0	0	0.0	0.0	0.0	0	0	1.000
Anchor 1032	3259	0	0	0	0	0.0	0.0	0.0	0	0	2.000
Anchor 1033	3968	0	0	0	0	0.0	0.0	0.0	0	0	2.000
Anchor 1034	3778	0	0	0	0	0.0	0.0	0.0	0	0	2.000
Anchor 1044	1859	0	0	0	0	0.0	0.0	0.0	0	0	1.000