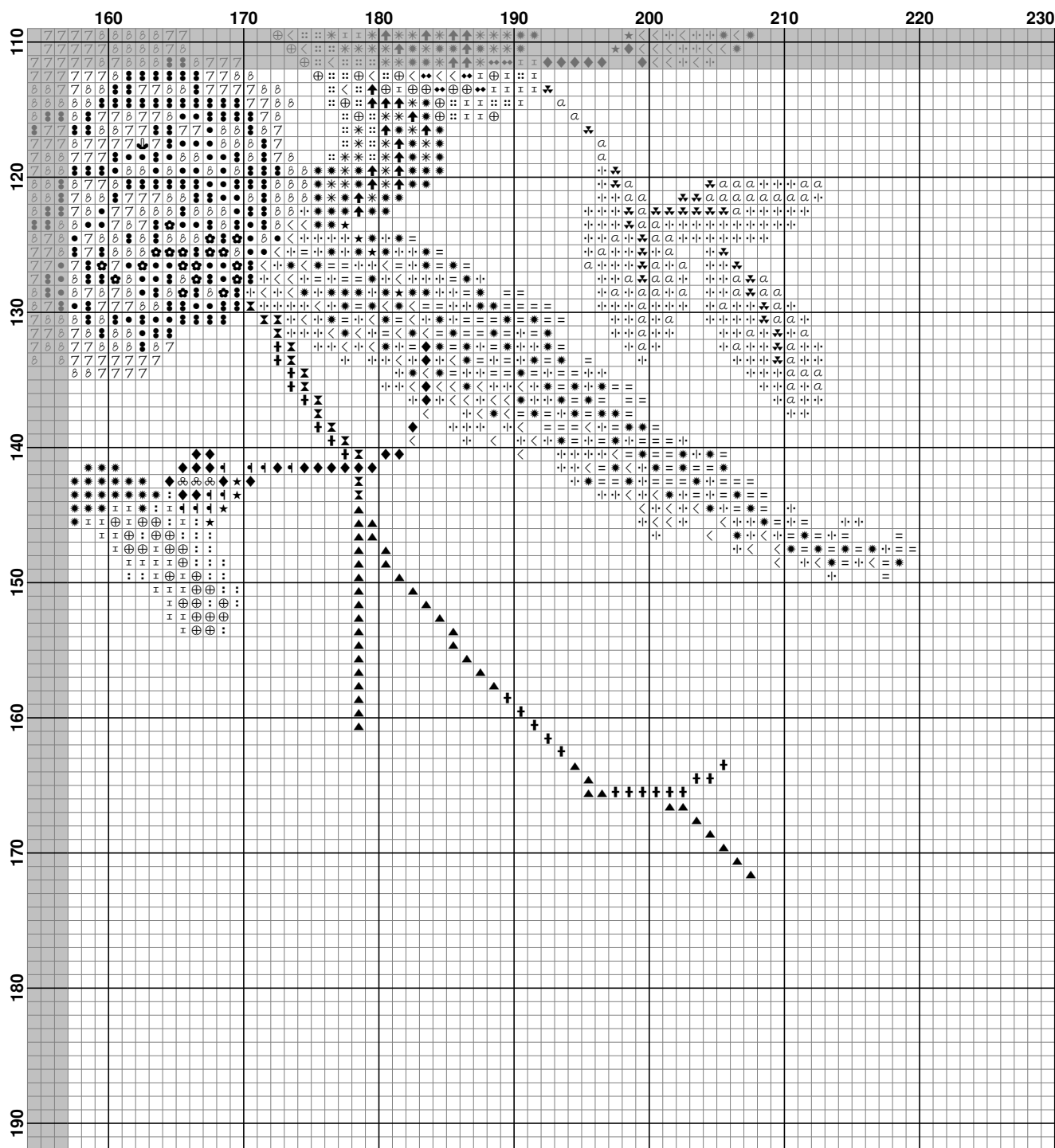






	80	90	100	110	120	130	140	150
110	...	...	...	...	...	...	...	...
120	...	...	...	...	...	...	...	...
130	...	...	...	...	...	...	...	...
140	...	...	...	...	...	...	...	...
150	...	...	...	...	...	...	...	...
160	...	...	...	...	...	...	...	...
170	...	...	...	...	...	...	...	...
180	...	...	...	...	...	...	...	...
190	...	...	...	...	...	...	...	...



**Fabric:** Aida 14, Картон  
210w X 172h Stitches

**Size:** 14 Count, 38.10w X 31.21h cm

**Floss Used for Full Stitches:**

Symbol	Strands	Type	Number	Color
	2	DMC	158	Cornflower Blue-MD VY DK
~	2	DMC	221	Shell Pink-VY DK
	2	DMC	224	Shell Pink-VY LT
∞	2	DMC	225	Shell Pink-UL VY LT
2	2	DMC	310	Black
	2	DMC	334	Baby Blue-MD
♦♦	2	DMC	347	Salmon-VY DK
::	2	DMC	351	Coral
↑	2	DMC	352	Coral-LT
Y	2	DMC	597	Turquoise
▲	2	DMC	611	Drab Brown
†	2	DMC	612	Drab Brown-LT
H	2	DMC	644	Beige Gray-MD
••	2	DMC	720	Orange Spice-DK
*	2	DMC	727	Topaz-VY LT
ι	2	DMC	728	Topaz
↘	2	DMC	730	Olive Green-VY DK
a	2	DMC	733	Olive Green-MD
*	2	DMC	745	Yellow-LT Pale
√	2	DMC	760	Salmon
:	2	DMC	780	Topaz-UL VY DK
⊕	2	DMC	783	Topaz-MD
m	2	DMC	794	Cornflower Blue-LT
>	2	DMC	822	Beige Gray-LT
<	2	DMC	832	Golden Olive
⋈	2	DMC	834	Golden Olive-VY LT
⊗	2	DMC	902	Garnet-VY DK
•	2	DMC	919	Red Copper
8	2	DMC	922	Copper-LT
↓	2	DMC	930	Antique Blue-DK
★	2	DMC	934	Black Avocado Green
†	2	DMC	937	Avocado Green-MD
7	2	DMC	977	Golden Brown-LT
	2	DMC	993	Aquamarine-LT
◆	2	DMC	3012	Khaki Green-MD
⌘	2	DMC	3013	Khaki Green-LT
⌘	2	DMC	3021	Brown Gray-VY DK
▼	2	DMC	3328	Salmon-DK
@	2	DMC	3779	Terra Cotta-UL VY LT
	2	DMC	3807	Cornflower Blue
⊠	2	DMC	3808	Turquoise-UL VY DK
≡	2	DMC	3810	Turquoise-DK
◇	2	DMC	3811	Turquoise-VY LT
L	2	DMC	3819	Moss Green-LT
8	2	DMC	3840	Lavender Blue-LT
⊕	2	DMC	3849	Teal Green-LT
=	2	DMC	BLANC	White