

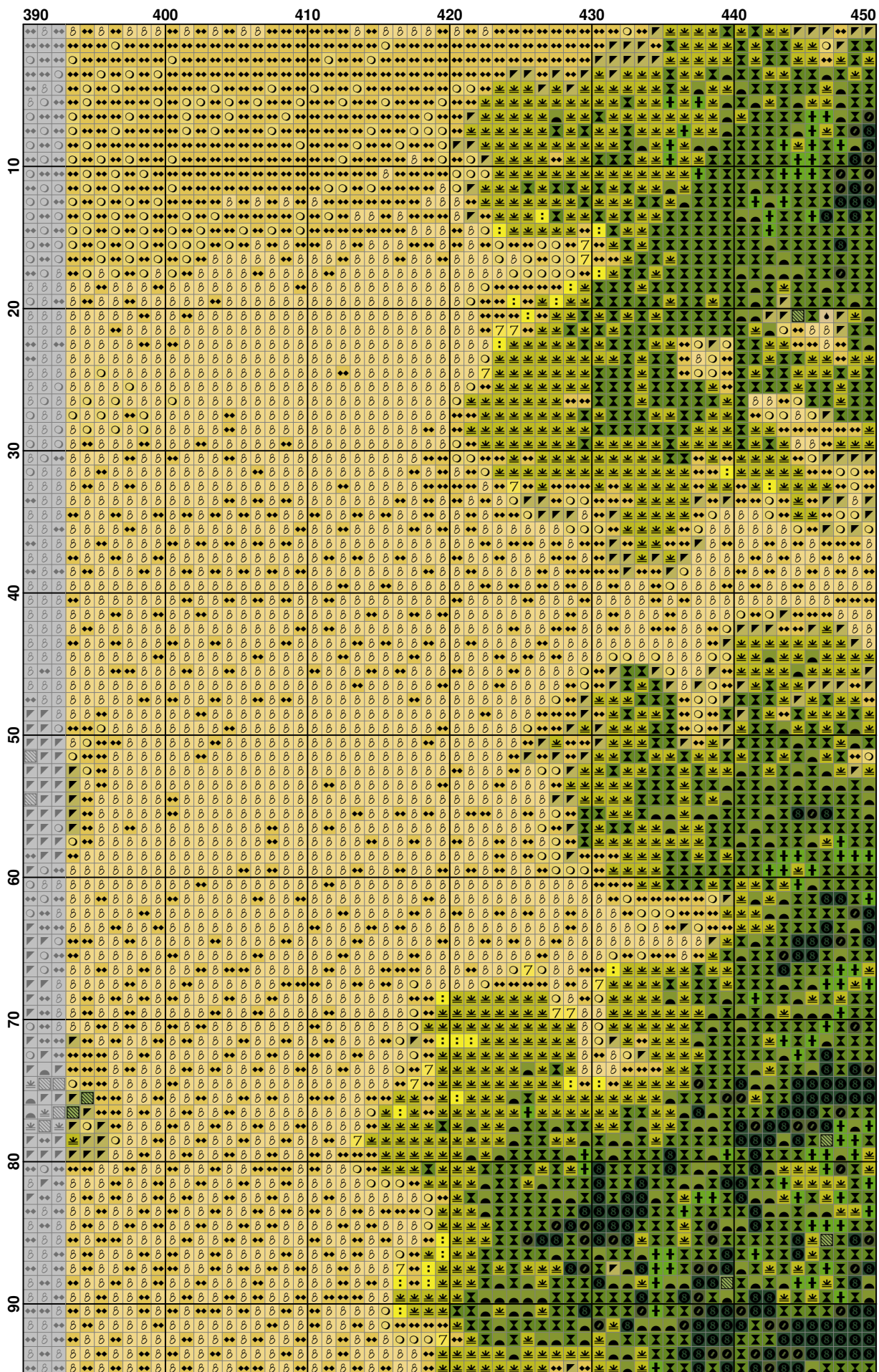
	70	80	90	100	110	120	130
10
20
30
40
50
60
70
80
90

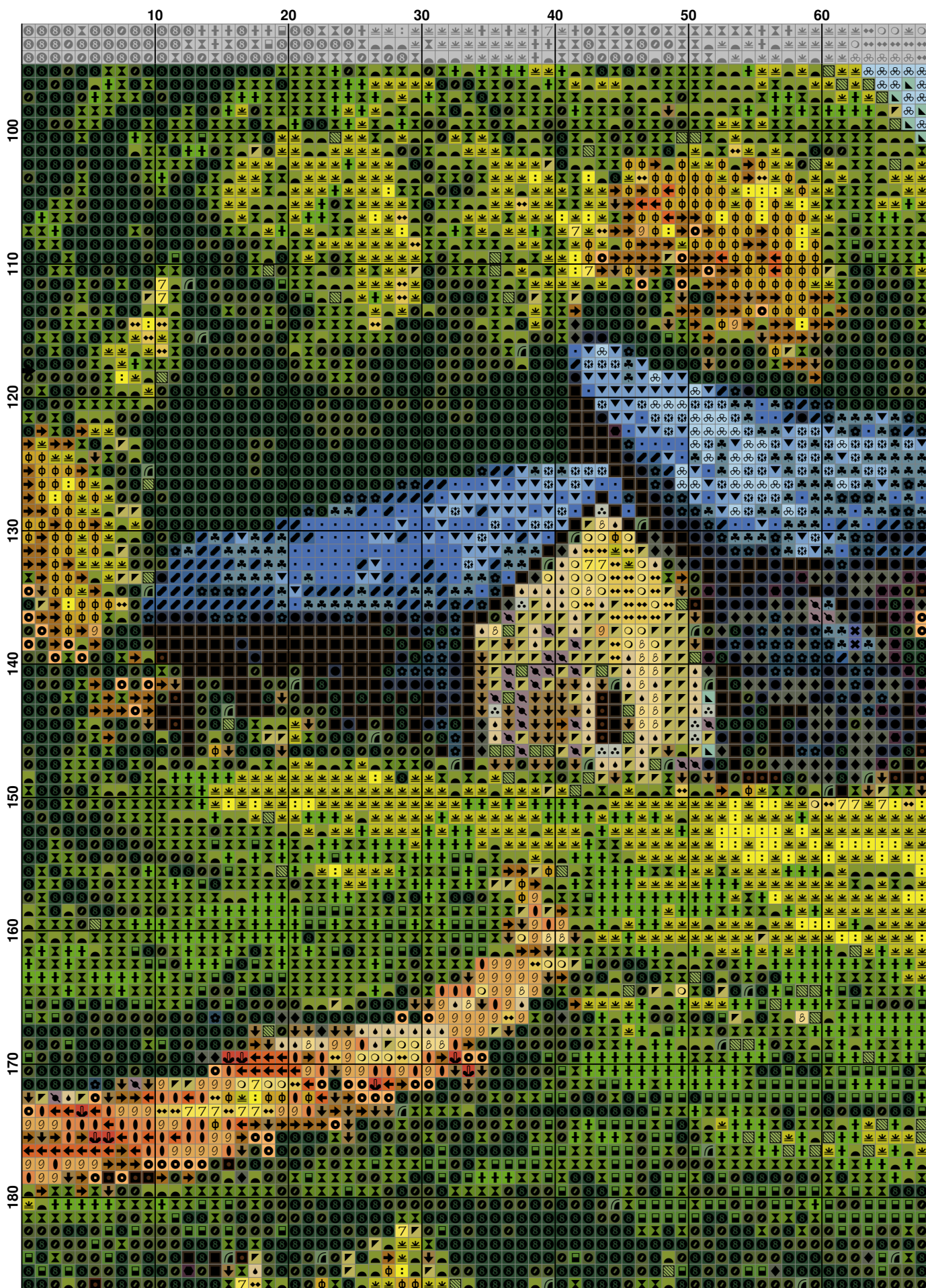
(11)

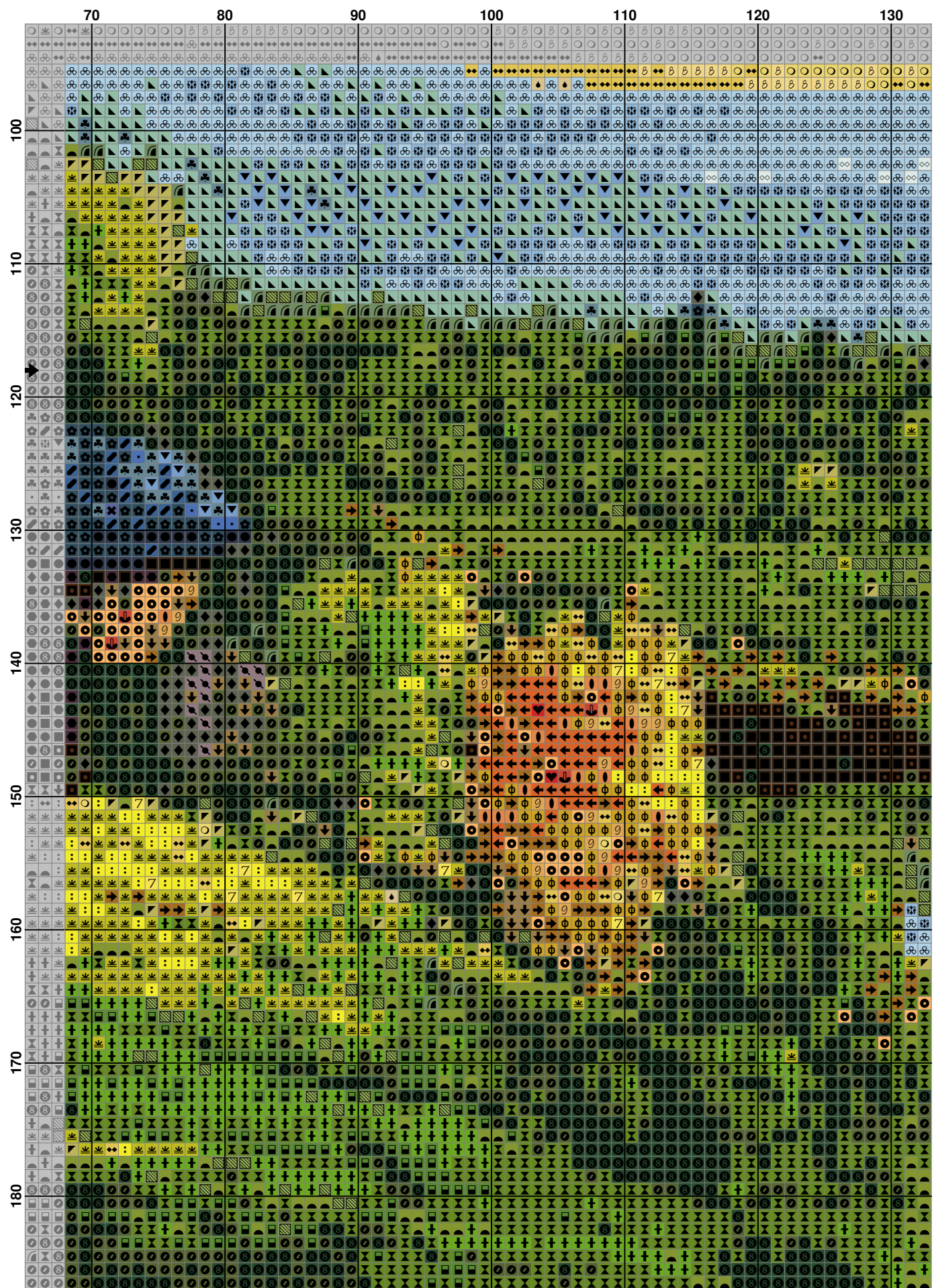
(12)

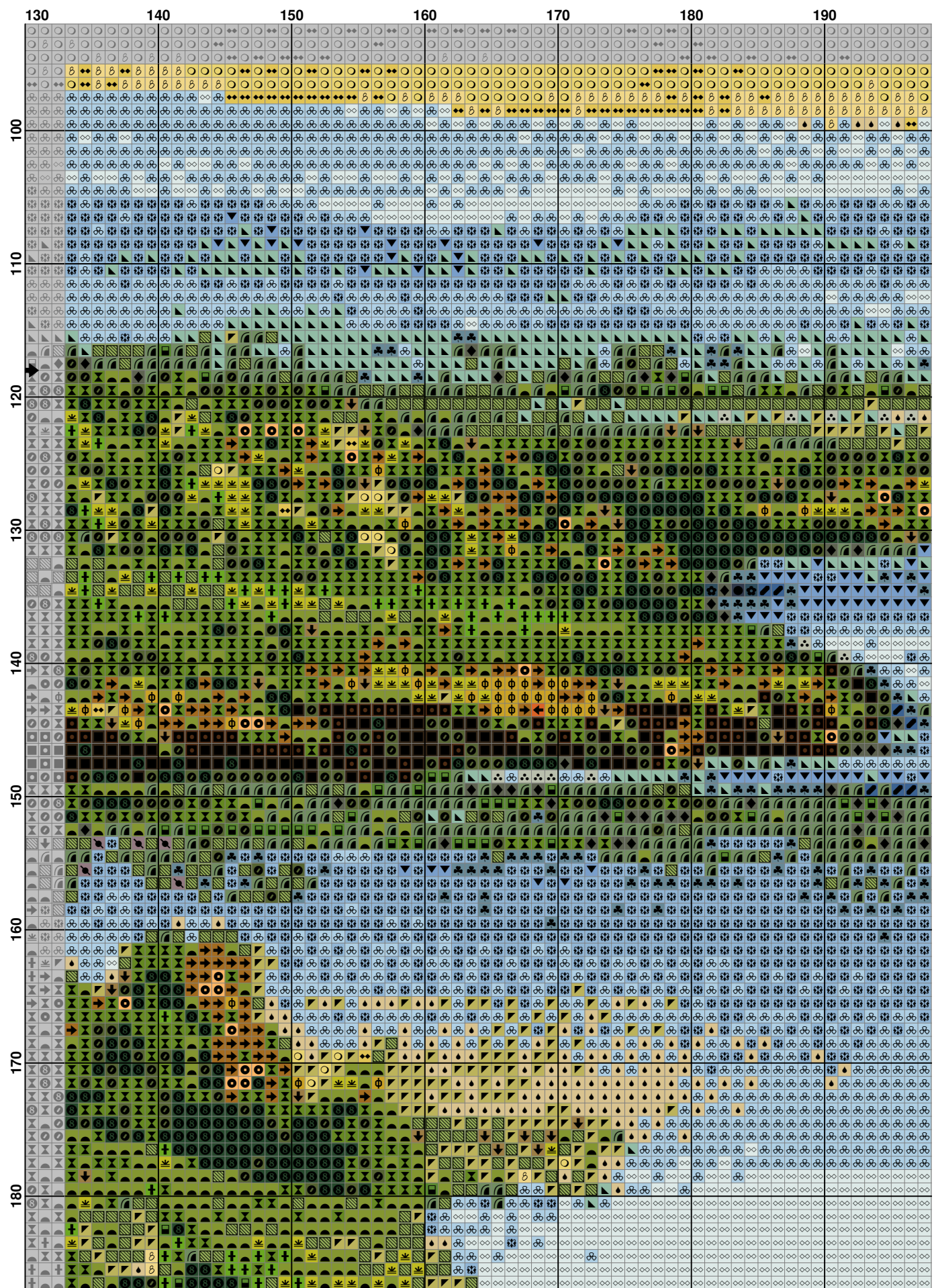
(13)

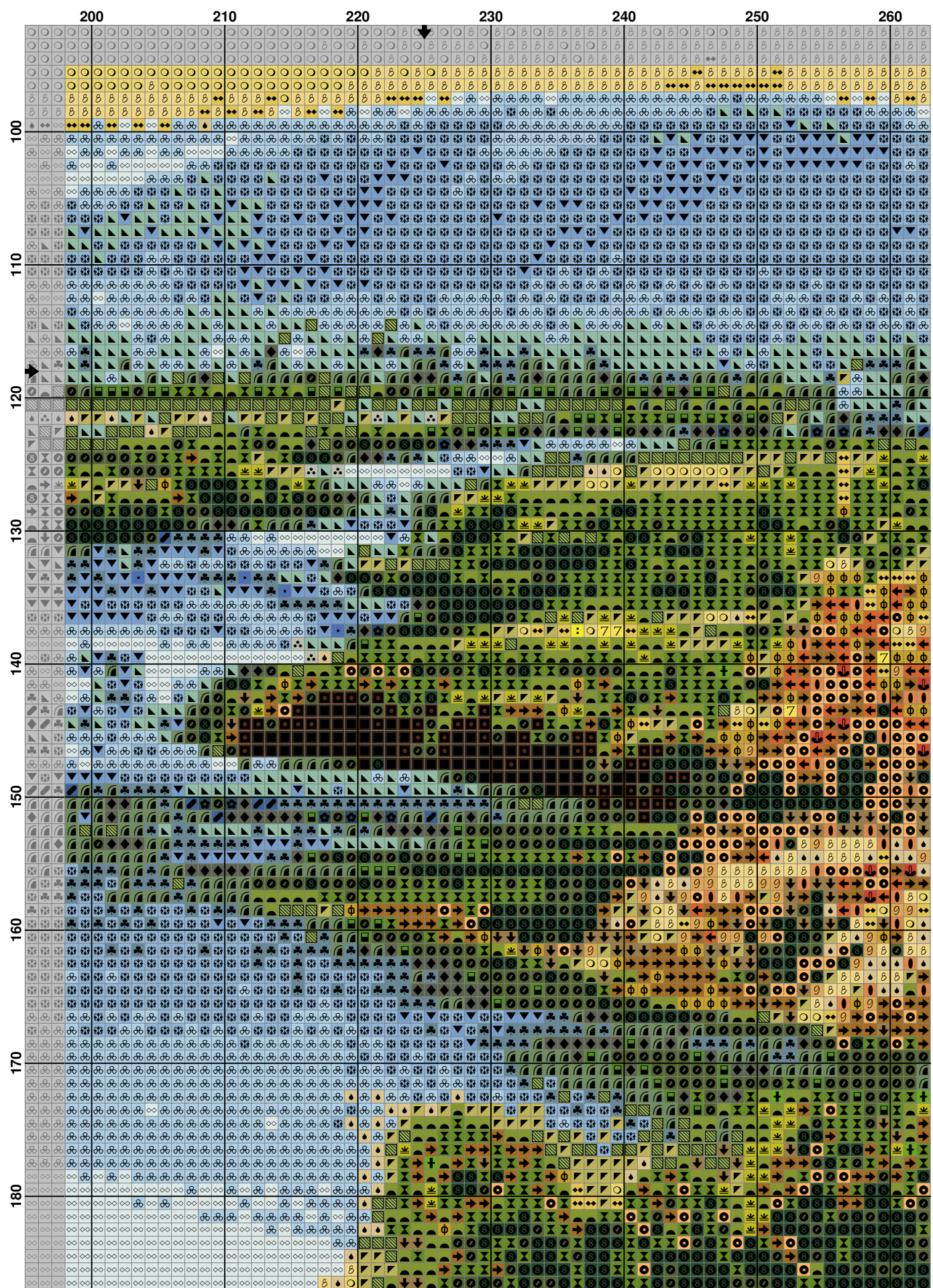
[illegible]

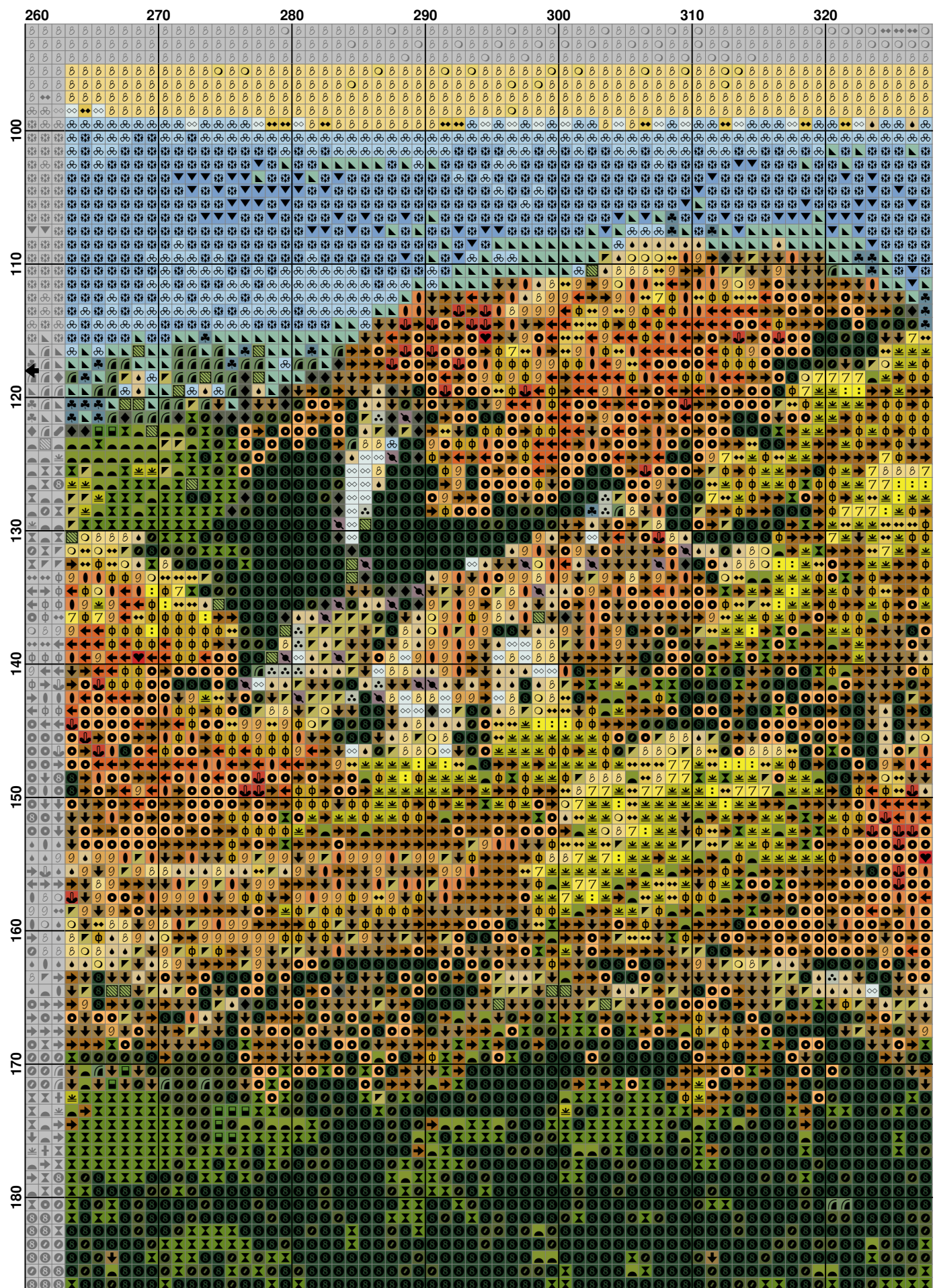


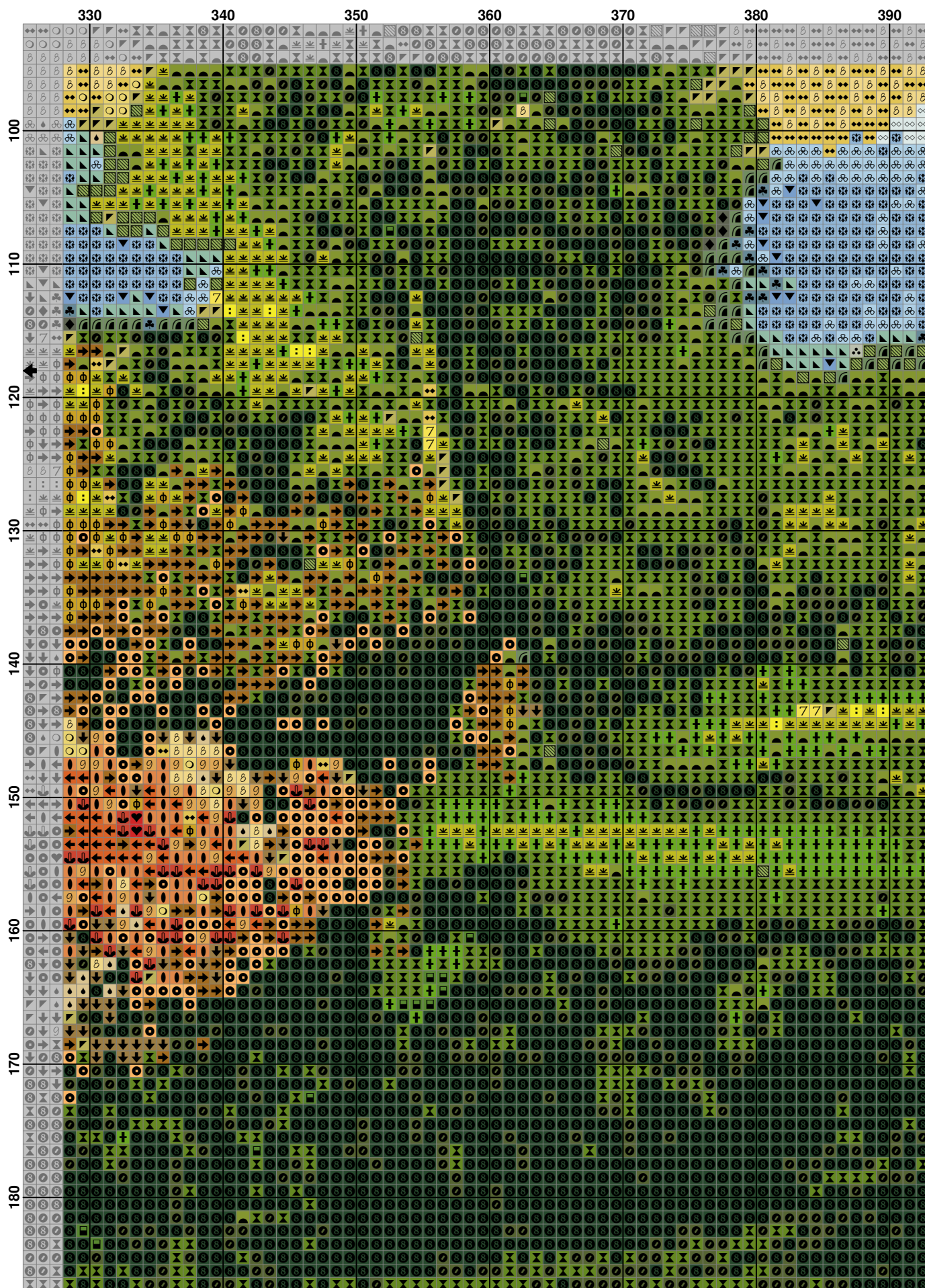


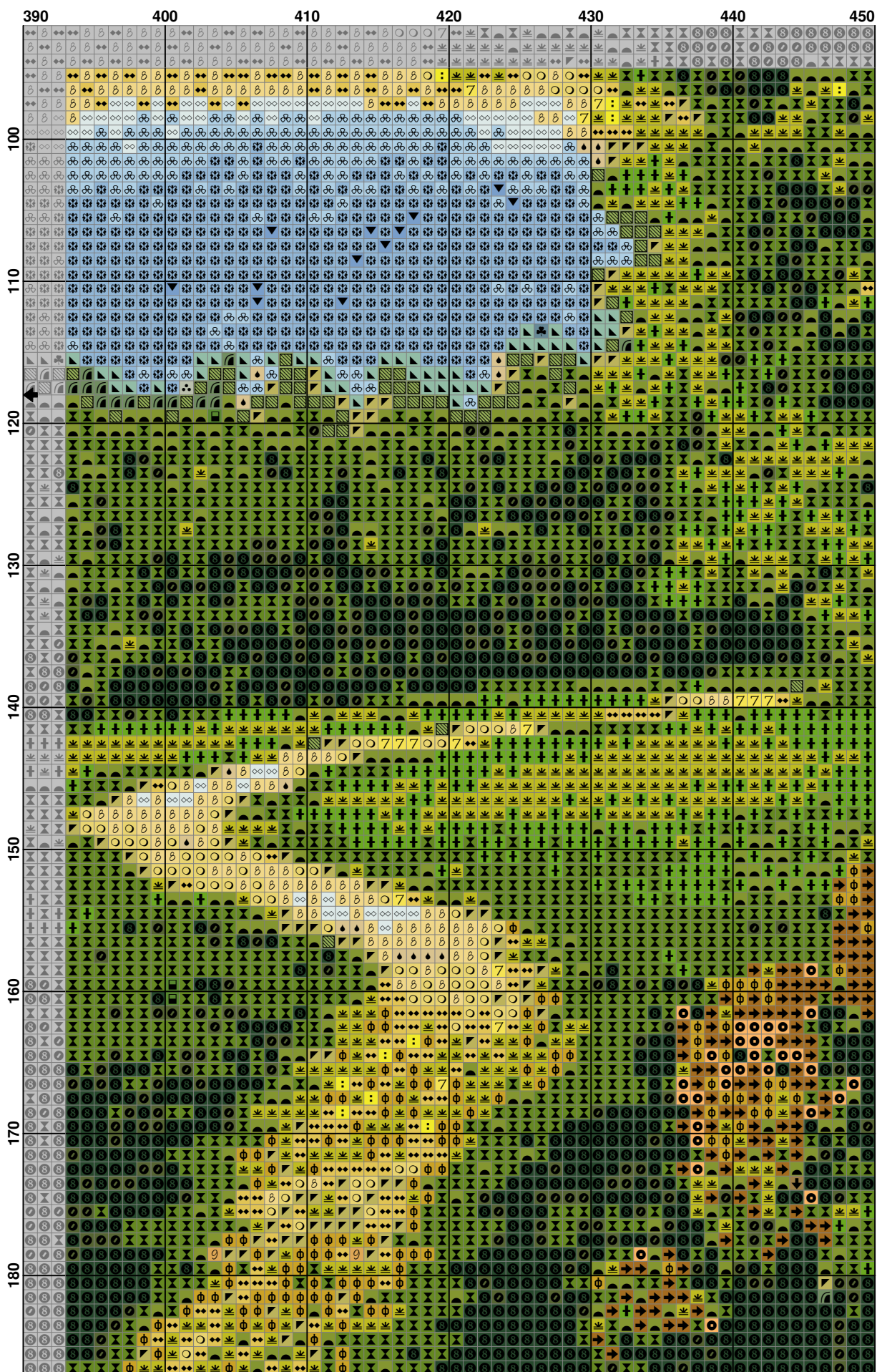




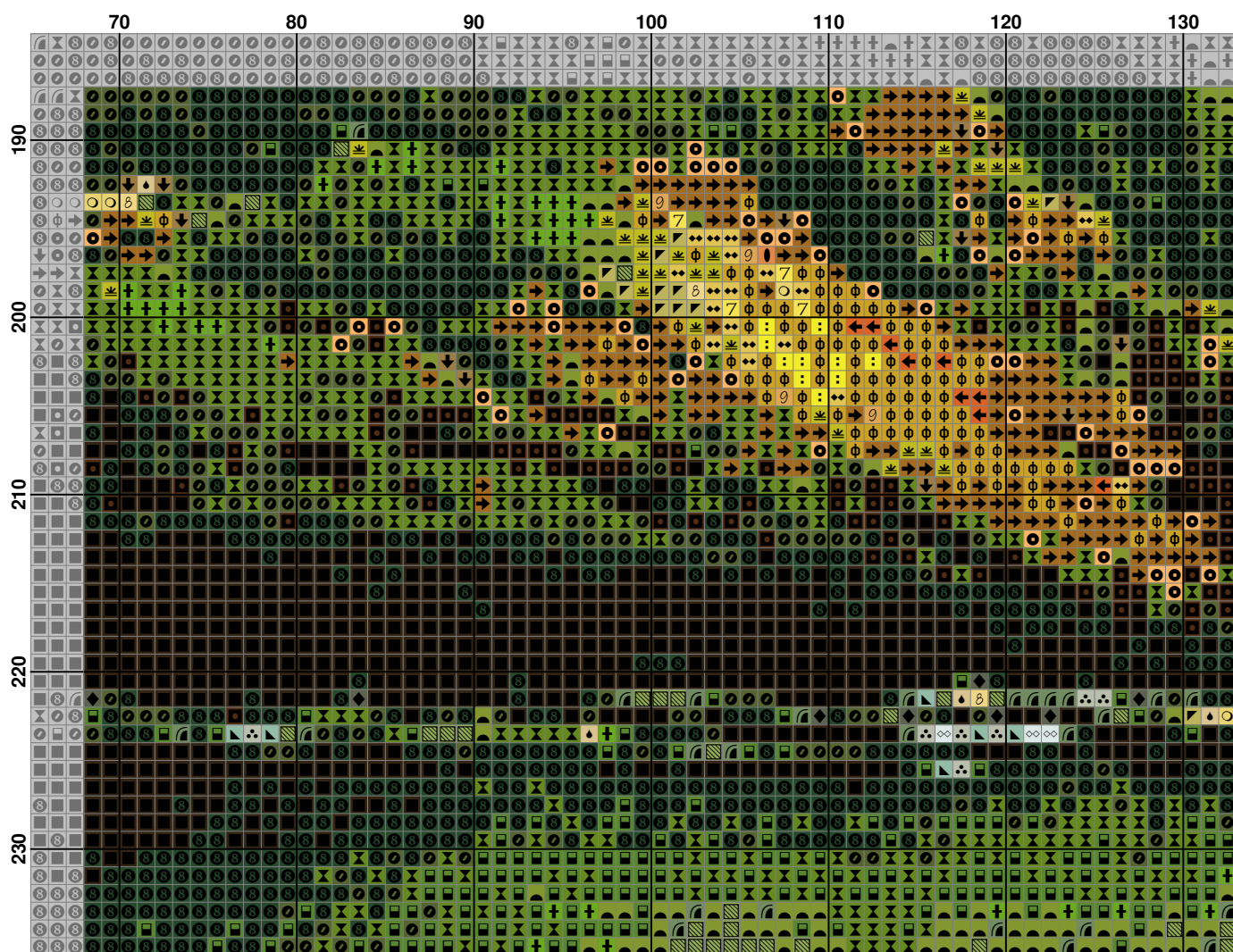


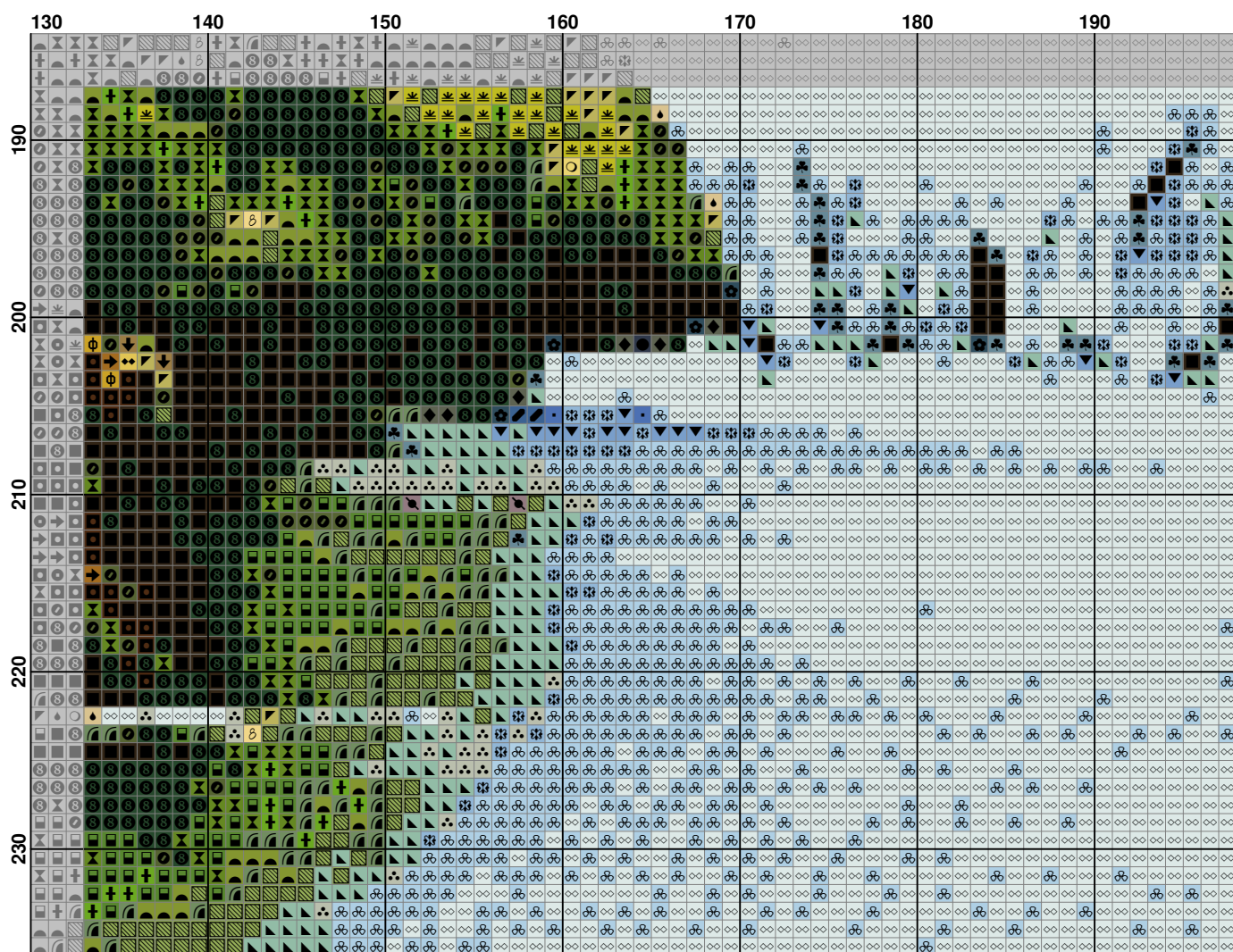


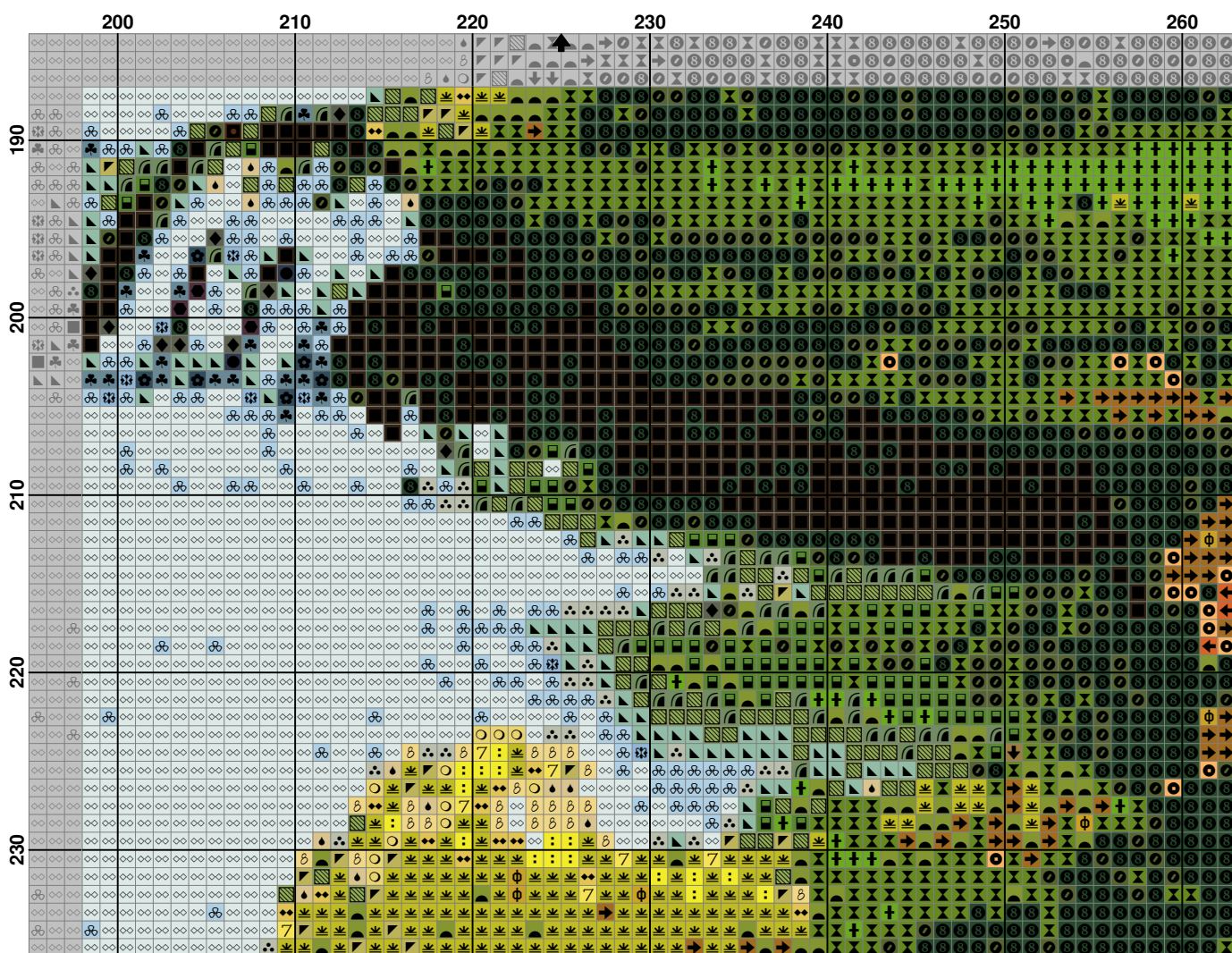


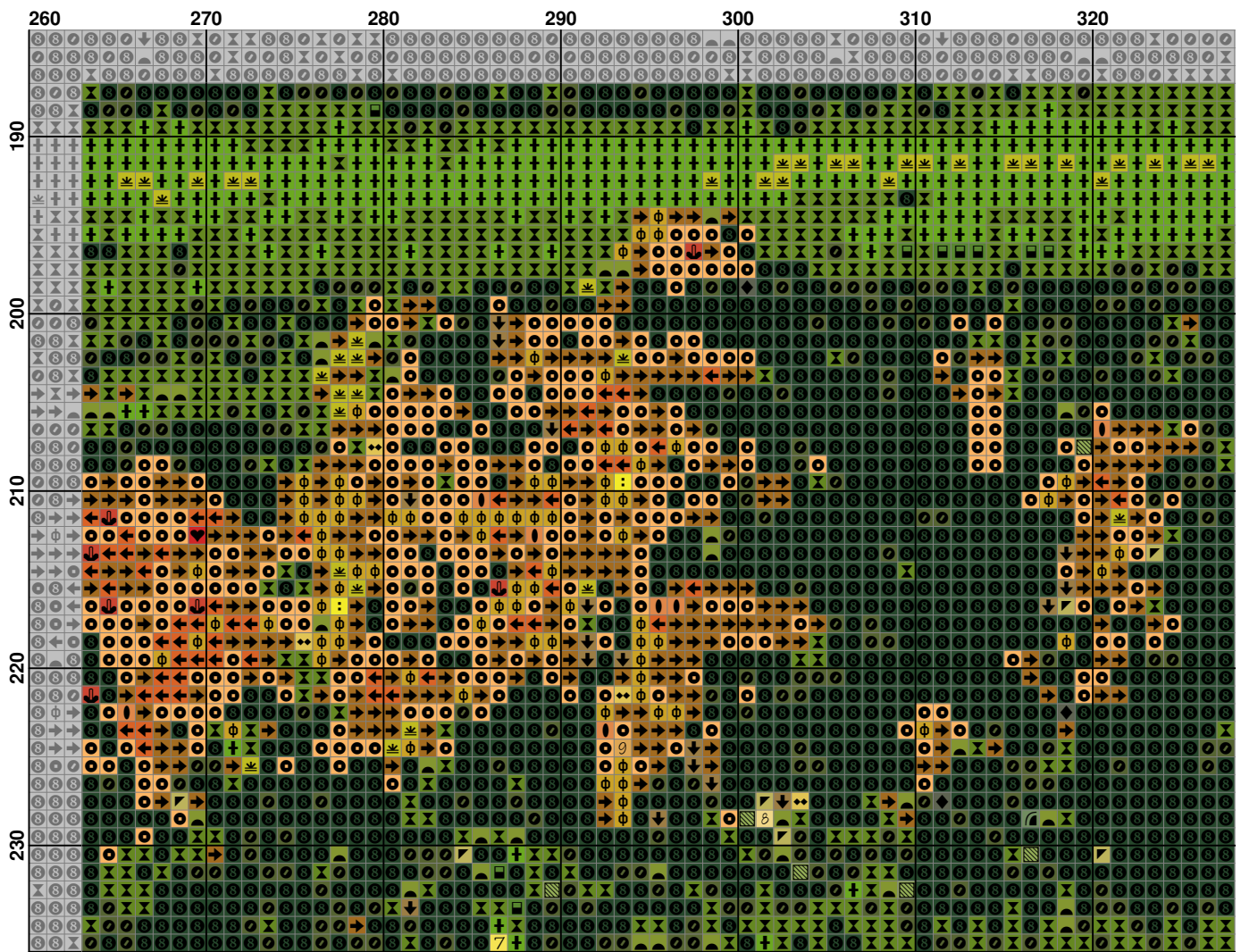


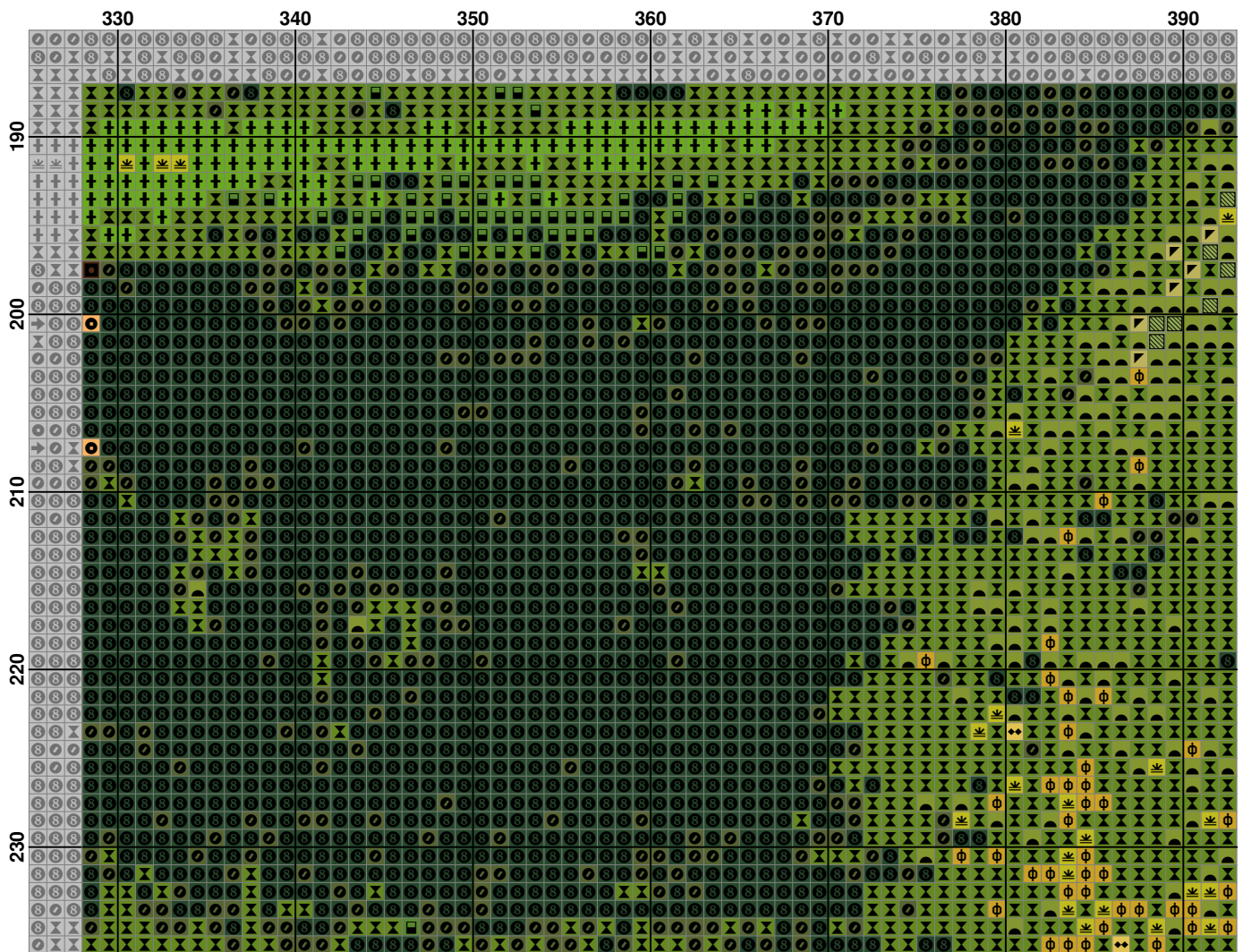


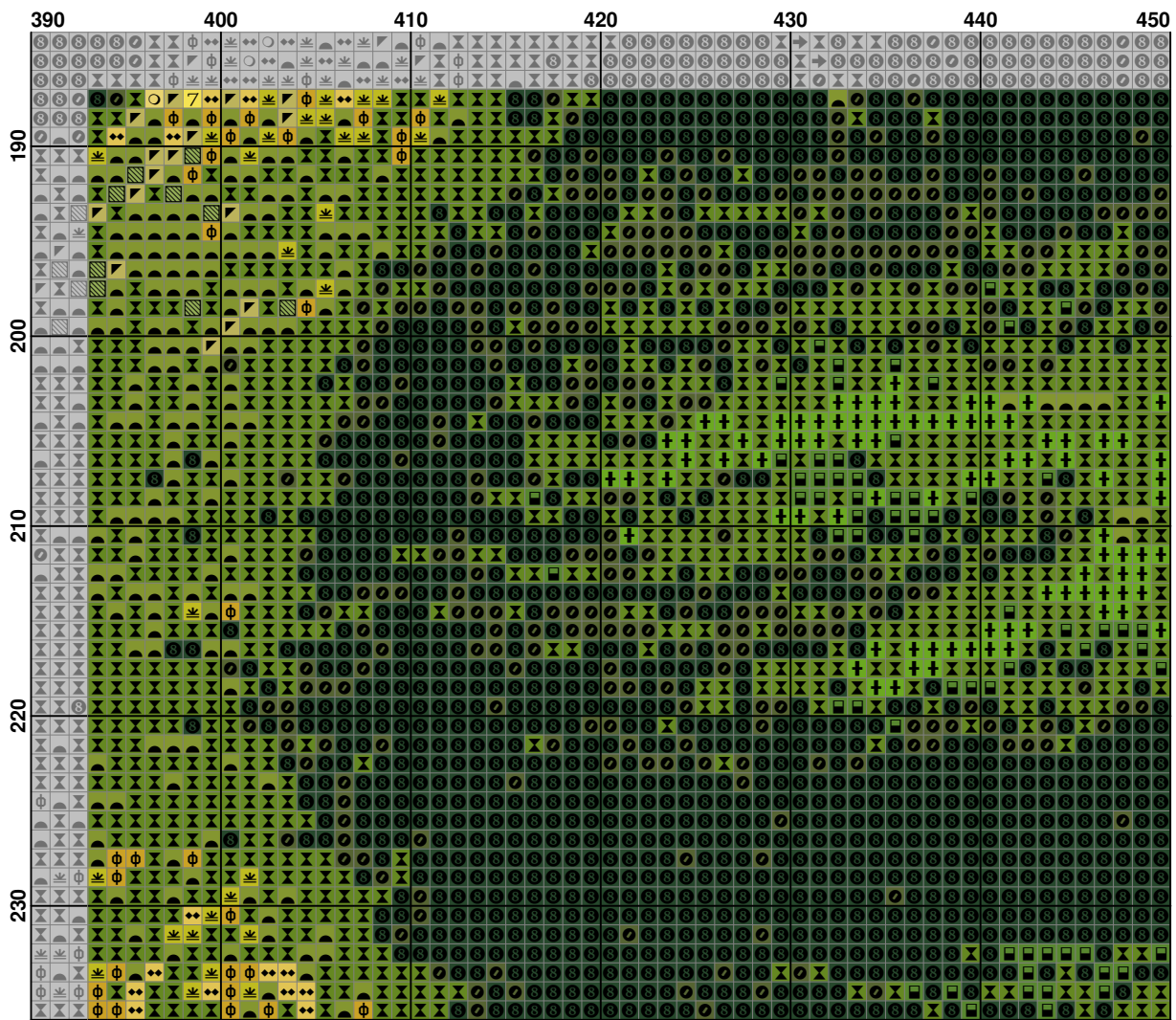













Pattern Name: "Осень"**Designed By:** Оксана**Fabric:** Aida 14, White

450w X 236h Stitches

Size: 14 Count, 81.64w X 42.82h cm**Floss Used for Full Stitches:**

Symbol	Strands	Type	Number	Color
	2	DMC	154	Grape-VY DK
	2	DMC	166	Moss Green-MD LT
	2	DMC	420	Hazelnut Brown-DK
	2	DMC	471	Avocado Green-VY LT
	2	DMC	581	Moss Green
	2	DMC	648	Beaver Gray-LT
	2	DMC	666	Christmas Red-BRT
	2	DMC	720	Orange Spice-DK
	2	DMC	726	Topaz-LT
	2	DMC	734	Olive Green-LT
	2	DMC	738	Tan-VY LT
	2	DMC	792	Cornflower Blue-DK
	2	DMC	798	Delft Blue-DK
	2	DMC	799	Delft Blue-MD
	2	DMC	800	Delft Blue-Pale
	2	DMC	823	Navy Blue-DK
	2	DMC	824	Blue-VY DK
	2	DMC	844	Beaver Brown-UL DK
	2	DMC	900	Burnt Orange-DK
	2	DMC	905	Parrot Green-DK
	2	DMC	906	Parrot Green-MD
	2	DMC	922	Copper-LT
	2	DMC	931	Antique Blue-MD
	2	DMC	936	Avocado Green-DK MD
	2	DMC	977	Golden Brown-LT
	2	DMC	2798	venus
	2	DMC	3041	Antique Violet-MD
	2	DMC	3363	Pine Green-MD
	2	DMC	3750	Antique Blue-VY DK
	2	DMC	3755	Baby Blue
	2	DMC	3756	Baby Blue-UL VY LT
	2	DMC	3817	Celadon Green-LT
	2	DMC	3821	Straw
	2	DMC	3822	Straw-LT
	2	DMC	3823	Yellow-UL Pale
	2	DMC	3852	Straw-VY DK
	2	DMC	3855	Autumn Gold-LT
	2	DMC	420a	Hazelnut Brown - Dark
	2	DMC	470A	Avocado Green-LT
	2	DMC	5279	Metallic Thread Copper
	2	DMC	E135	Golden dawn
	2	DMC	012333	привесок
	2	DMC	938 mid	Coffee Brown-UL DK

Расход нитей

Нитей в мотке: 6

Длина мотка: 795.0 cm

Type	Number	Full	Half	Quarter	Petite	Back(cm)	Str(cm)	Spec(cm)	French	Bead	Skein Est
DMC	154	41	0	0	0	0.0	0.0	0.0	0	0	1.000
DMC	166	4475	0	0	0	0.0	0.0	0.0	0	0	2.000
DMC	420	735	0	0	0	0.0	0.0	0.0	0	0	1.000
DMC	471	1194	0	0	0	0.0	0.0	0.0	0	0	1.000
DMC	581	4284	0	0	0	0.0	0.0	0.0	0	0	2.000
DMC	648	125	0	0	0	0.0	0.0	0.0	0	0	1.000
DMC	666	20	0	0	0	0.0	0.0	0.0	0	0	1.000
DMC	720	520	0	0	0	0.0	0.0	0.0	0	0	1.000
DMC	726	4193	0	0	0	0.0	0.0	0.0	0	0	2.000
DMC	734	1436	0	0	0	0.0	0.0	0.0	0	0	1.000
DMC	738	446	0	0	0	0.0	0.0	0.0	0	0	1.000
DMC	792	4	0	0	0	0.0	0.0	0.0	0	0	1.000
DMC	798	103	0	0	0	0.0	0.0	0.0	0	0	1.000
DMC	799	533	0	0	0	0.0	0.0	0.0	0	0	1.000
DMC	800	3341	0	0	0	0.0	0.0	0.0	0	0	2.000
DMC	823	153	0	0	0	0.0	0.0	0.0	0	0	1.000
DMC	824	116	0	0	0	0.0	0.0	0.0	0	0	1.000
DMC	844	375	0	0	0	0.0	0.0	0.0	0	0	1.000
DMC	900	133	0	0	0	0.0	0.0	0.0	0	0	1.000
DMC	905	1106	0	0	0	0.0	0.0	0.0	0	0	1.000
DMC	906	2578	0	0	0	0.0	0.0	0.0	0	0	2.000
DMC	922	315	0	0	0	0.0	0.0	0.0	0	0	1.000
DMC	931	525	0	0	0	0.0	0.0	0.0	0	0	1.000
DMC	936	5415	0	0	0	0.0	0.0	0.0	0	0	3.000
DMC	977	311	0	0	0	0.0	0.0	0.0	0	0	1.000
DMC	2798	13821	0	0	0	0.0	0.0	0.0	0	0	6.000
DMC	3041	68	0	0	0	0.0	0.0	0.0	0	0	1.000
DMC	3363	914	0	0	0	0.0	0.0	0.0	0	0	1.000
DMC	3750	175	0	0	0	0.0	0.0	0.0	0	0	1.000
DMC	3755	3133	0	0	0	0.0	0.0	0.0	0	0	2.000
DMC	3756	2672	0	0	0	0.0	0.0	0.0	0	0	2.000
DMC	3817	1345	0	0	0	0.0	0.0	0.0	0	0	1.000
DMC	3821	6307	0	0	0	0.0	0.0	0.0	0	0	3.000
DMC	3822	11899	0	0	0	0.0	0.0	0.0	0	0	6.000
DMC	3823	452	0	0	0	0.0	0.0	0.0	0	0	1.000
DMC	3852	1175	0	0	0	0.0	0.0	0.0	0	0	1.000
DMC	3855	10128	0	0	0	0.0	0.0	0.0	0	0	5.000
DMC	420a	2191	0	0	0	0.0	0.0	0.0	0	0	1.000
DMC	470A	13383	0	0	0	0.0	0.0	0.0	0	0	6.000
DMC	5279	1494	0	0	0	0.0	0.0	0.0	0	0	1.000
DMC	E135	1105	0	0	0	0.0	0.0	0.0	0	0	1.000
DMC	012333	2934	0	0	0	0.0	0.0	0.0	0	0	2.000
DMC	938 mid	527	0	0	0	0.0	0.0	0.0	0	0	1.000