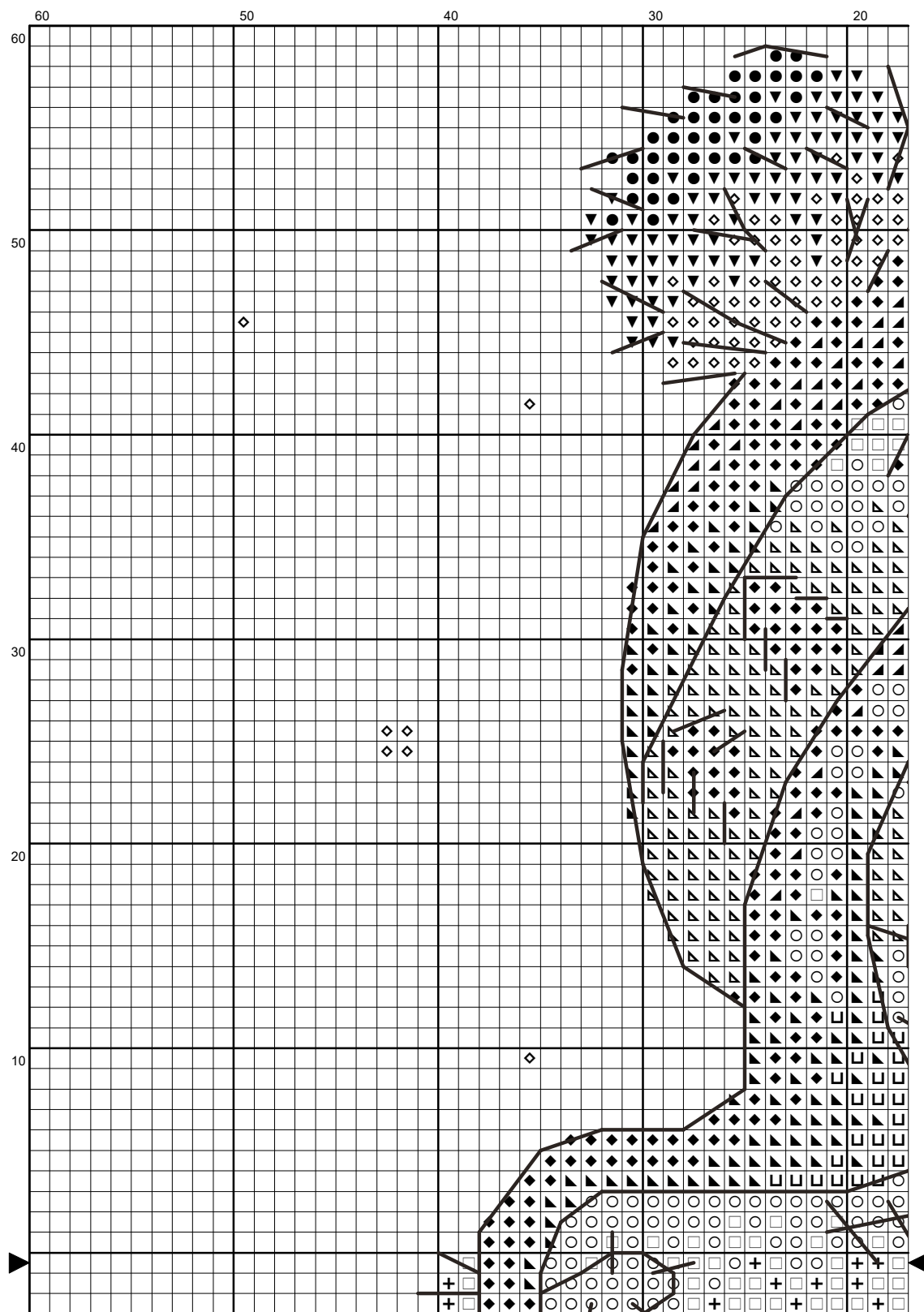
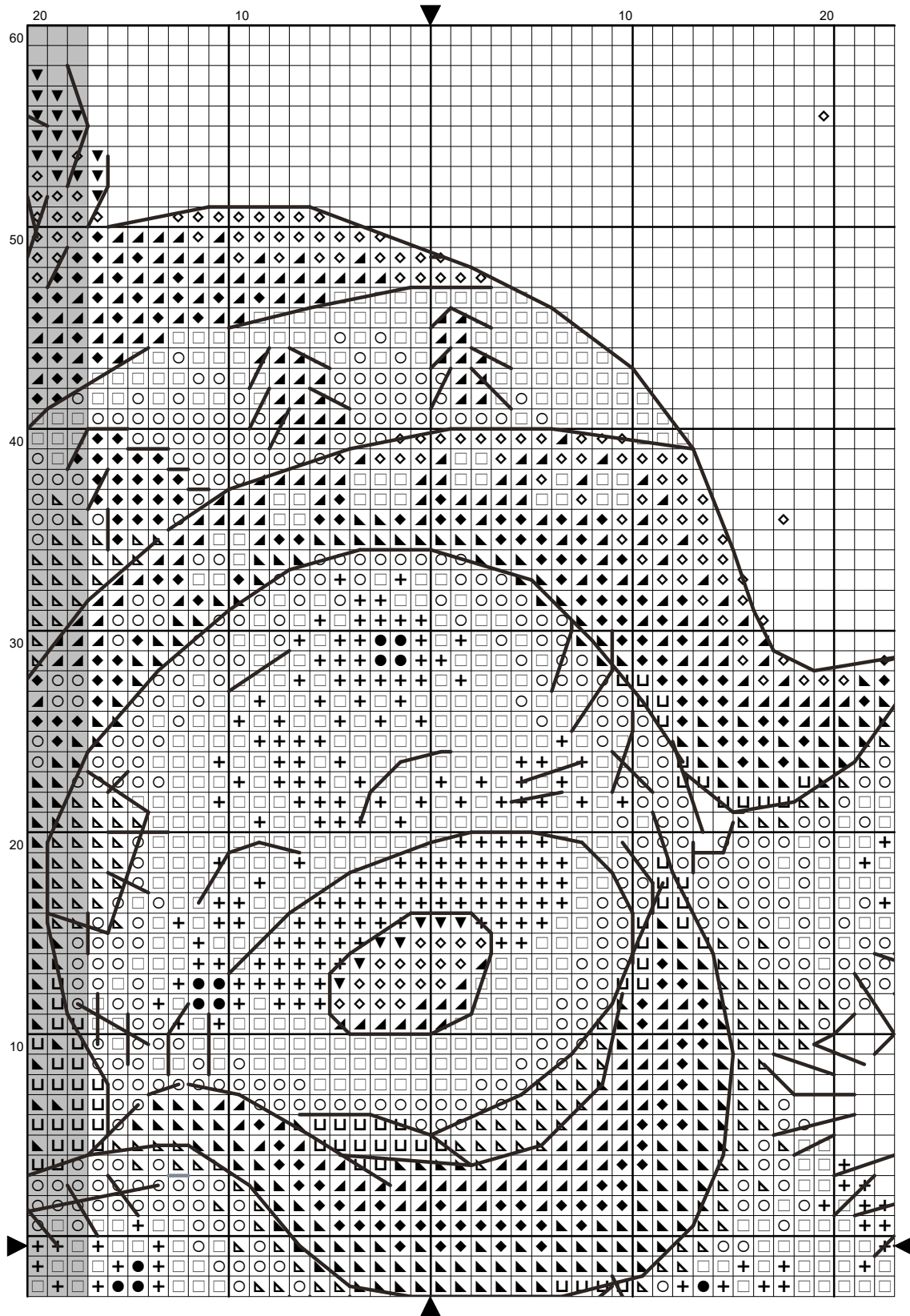


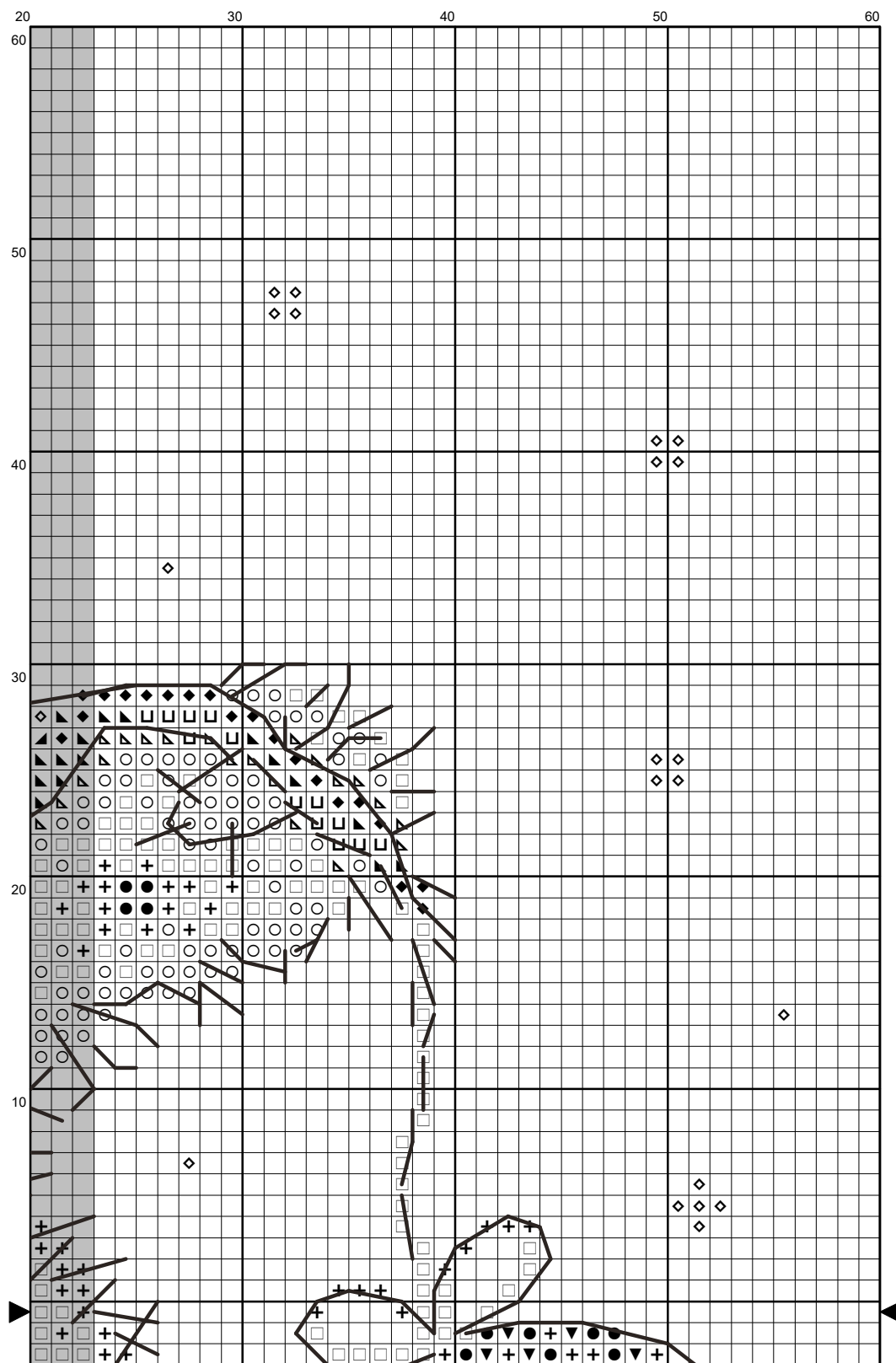
# TEDDY

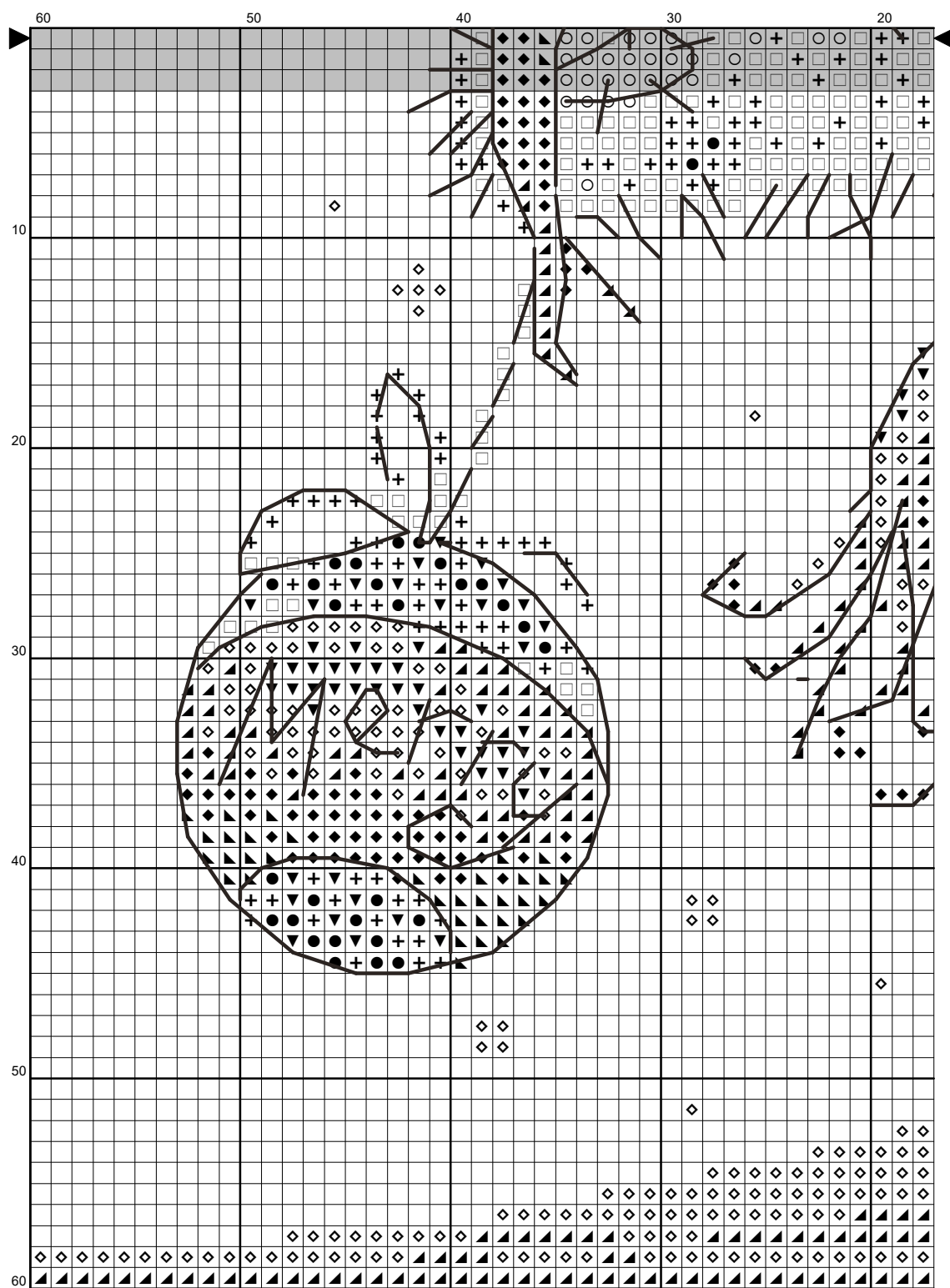


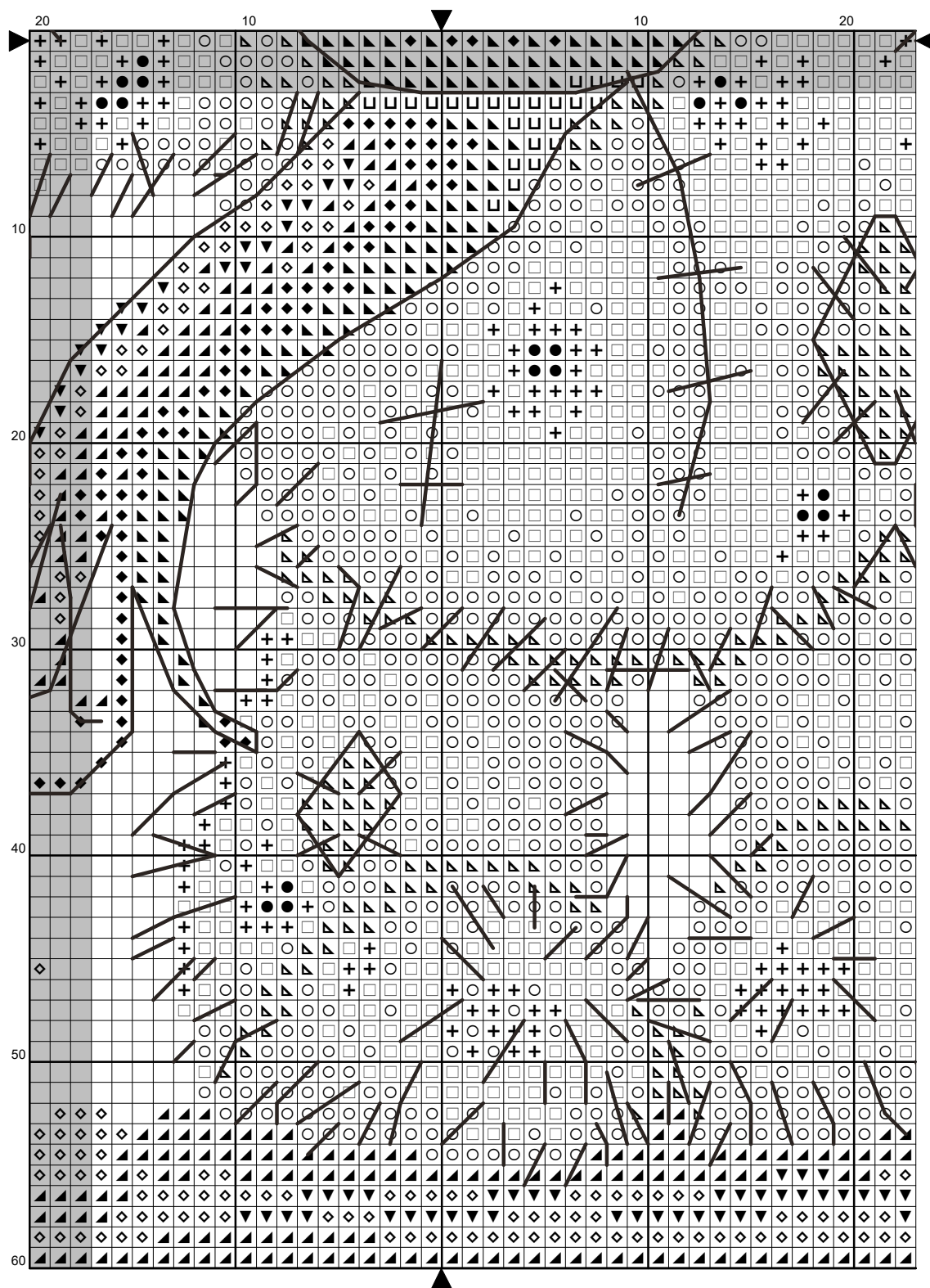
**Design size:** 8.57 x 8.50 inches or 21.77 x 21.59 cm

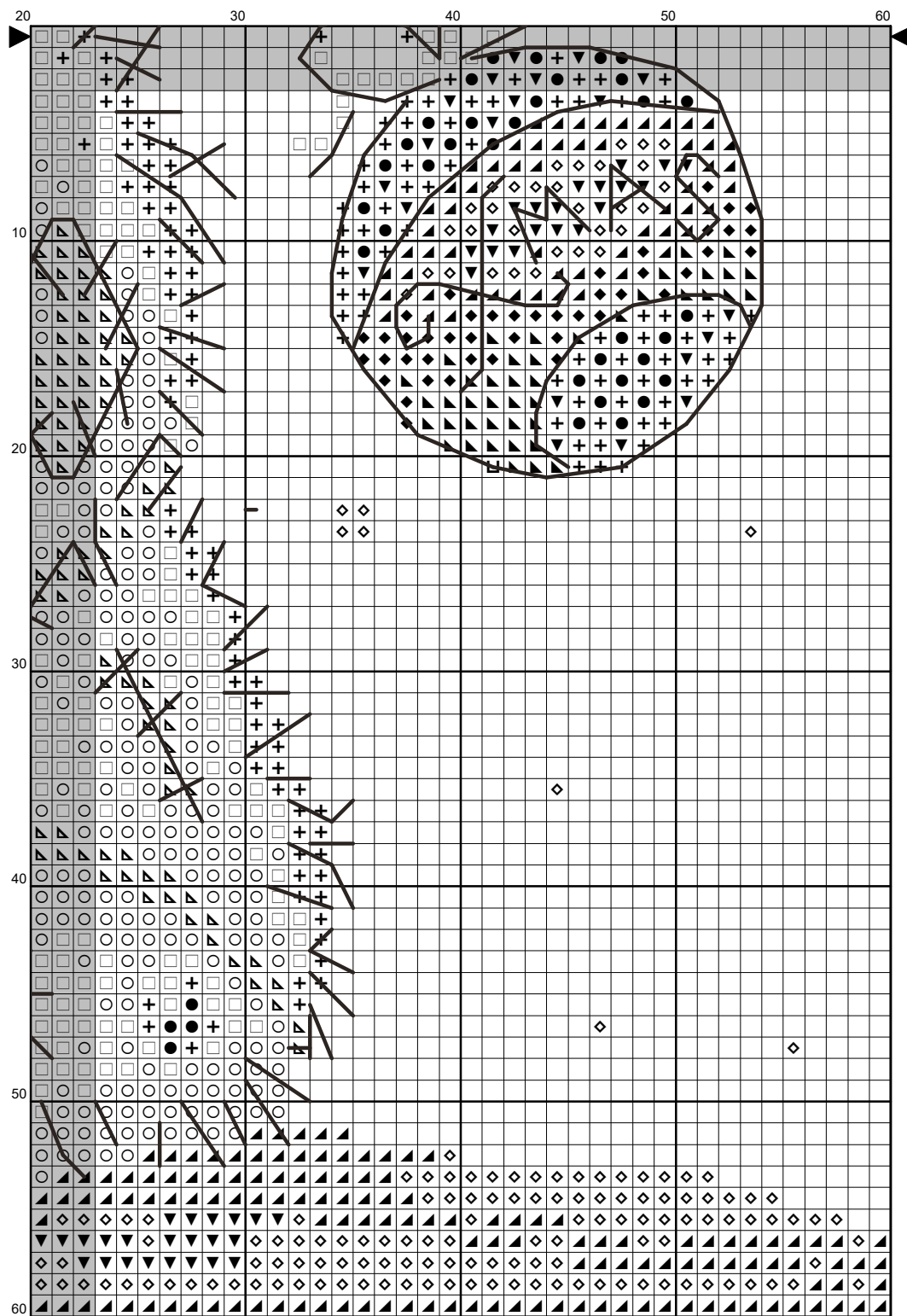












## Instructions and Symbol Key for Design "TEDDY"

---

**Fabric:** 14 count White Aida

**Stitches:** 120 x 119      **Size:** 8.57 x 8.50 inches or 21.77 x 21.59 cm

**Colours:** DMC

Use **2** strands of thread for cross stitch

<u>Sym</u>	<u>No.</u>	<u>Colour Name</u>	<u>Sym</u>	<u>No.</u>	<u>Colour Name</u>
●	BLANC	BLANC	▼	3756	Cloud blue
◇	775	Summer rain blue	◆	3755	Pastel blue
▲	334	Pale indigo blue	▲	3325	Azur blue
◻	322	Delft blue	◻	415	Chrome grey
○	318	Granite grey	▲	414	Lead grey
+	762	Pearl grey			

Use **1** strand of thread for backstitch

	DMC 310 DMC 318	310 Granite grey
--	--------------------	---------------------

This chart has been designed and printed with our best intentions of being without mistakes. However, the possibility of human error, printing mistakes or the variation of individual stitching does exist, and we regret that we cannot be responsible for this.

Note: The shaded blocks on the chart represent overlapping stitches.  
 Produced using Cross Stitch Professional for Windows [www.dpsoftware.co.uk](http://www.dpsoftware.co.uk)  
 Copyright © Lu Gradusova 2021 All rights reserved.