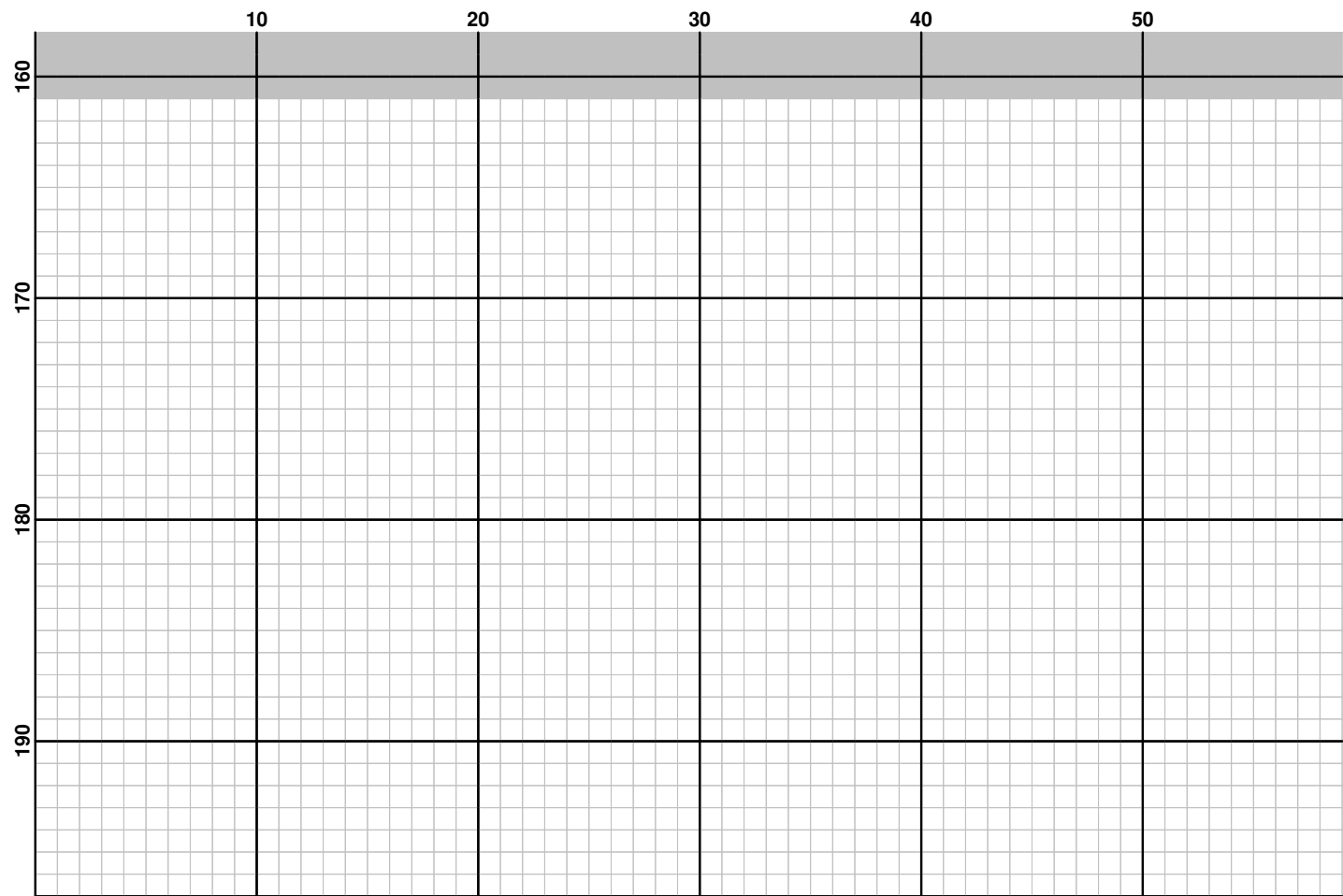
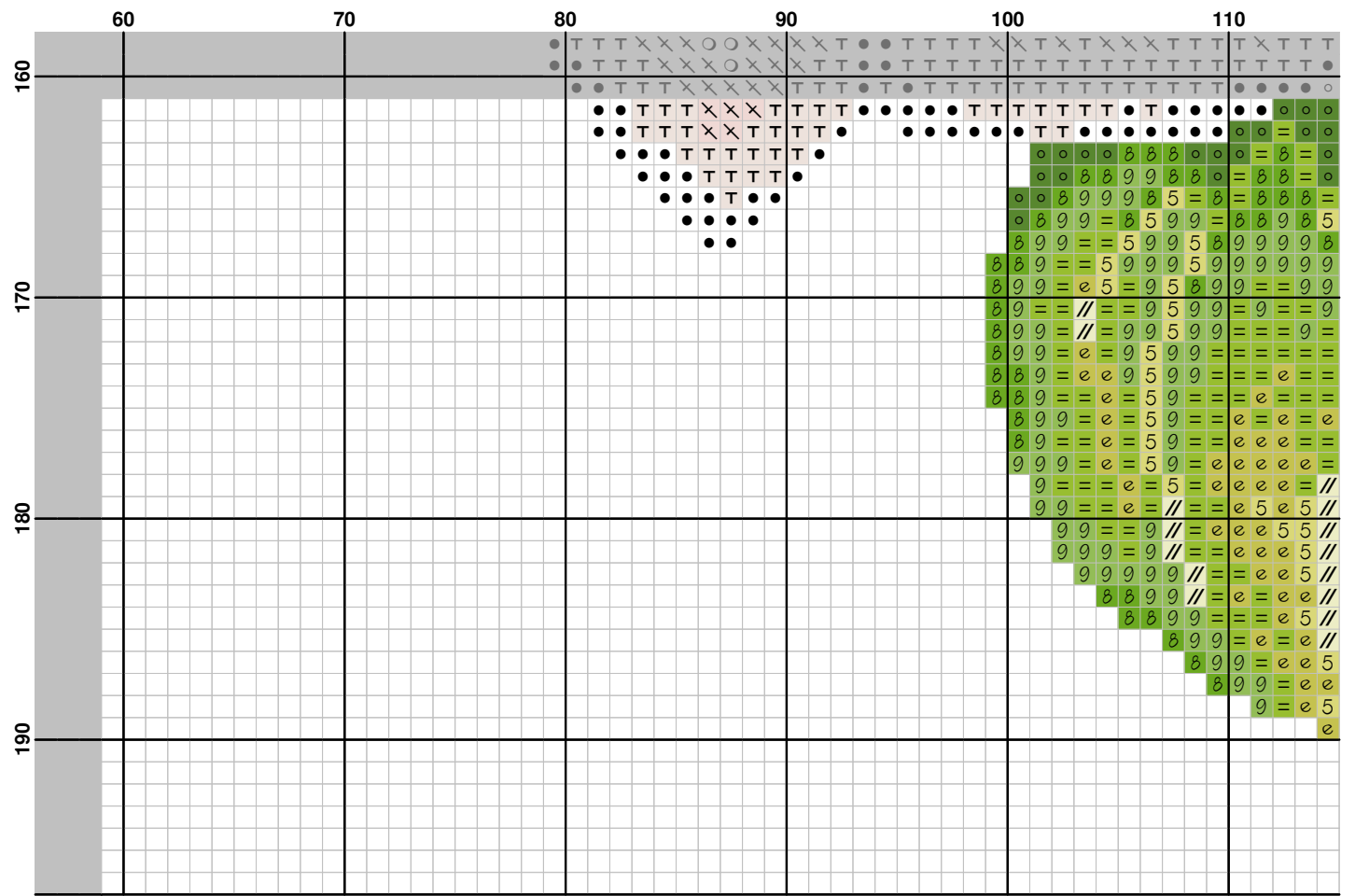
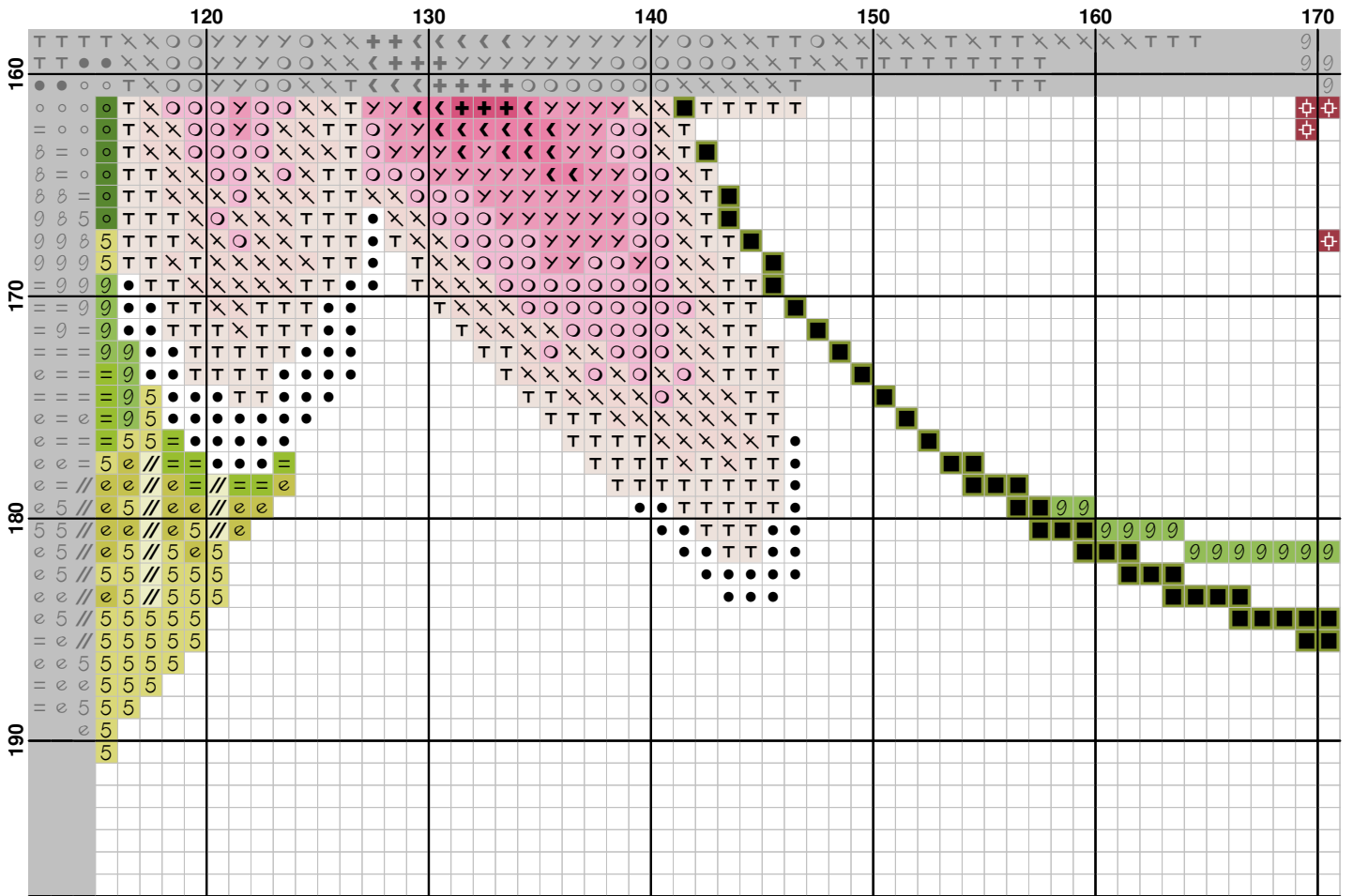
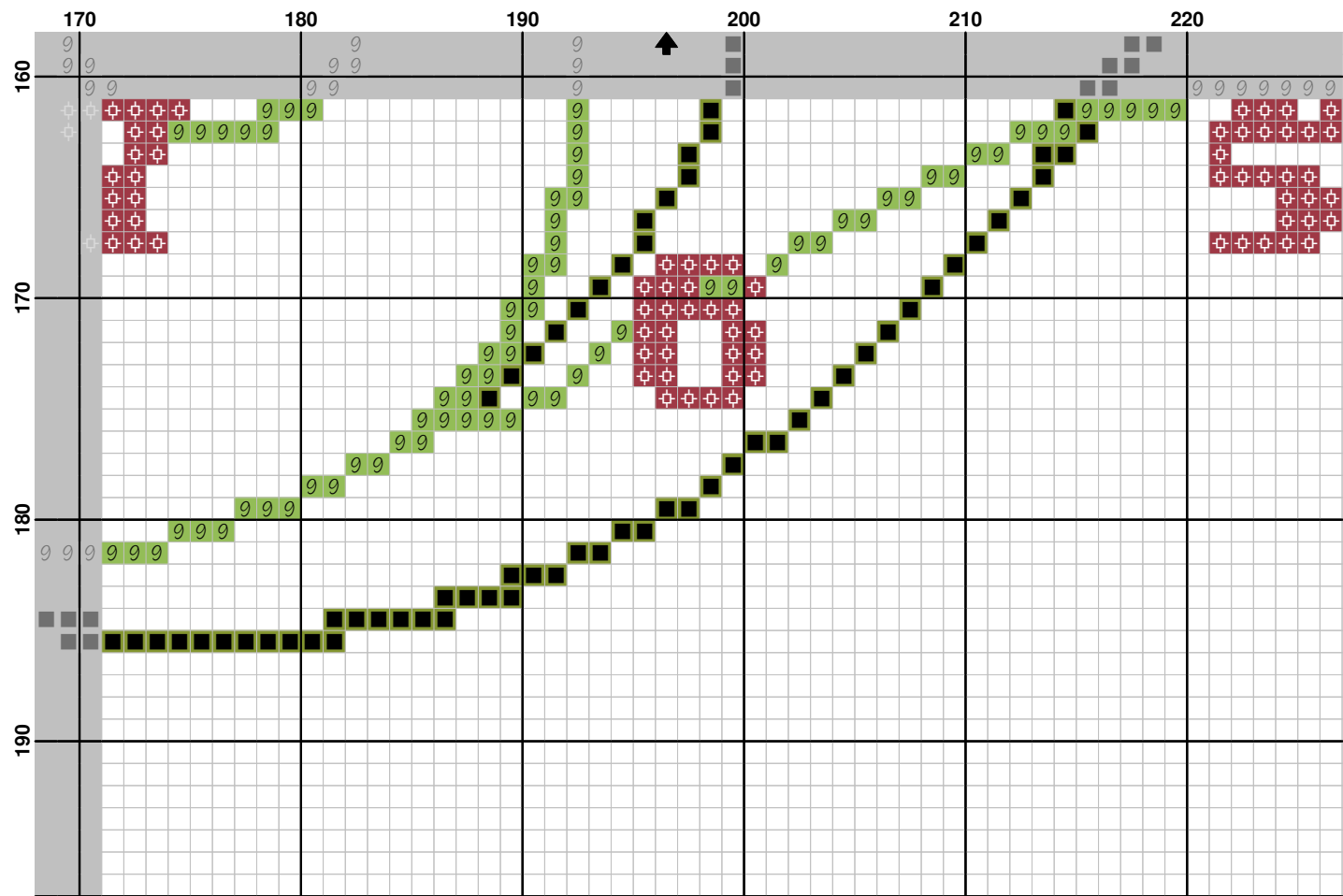


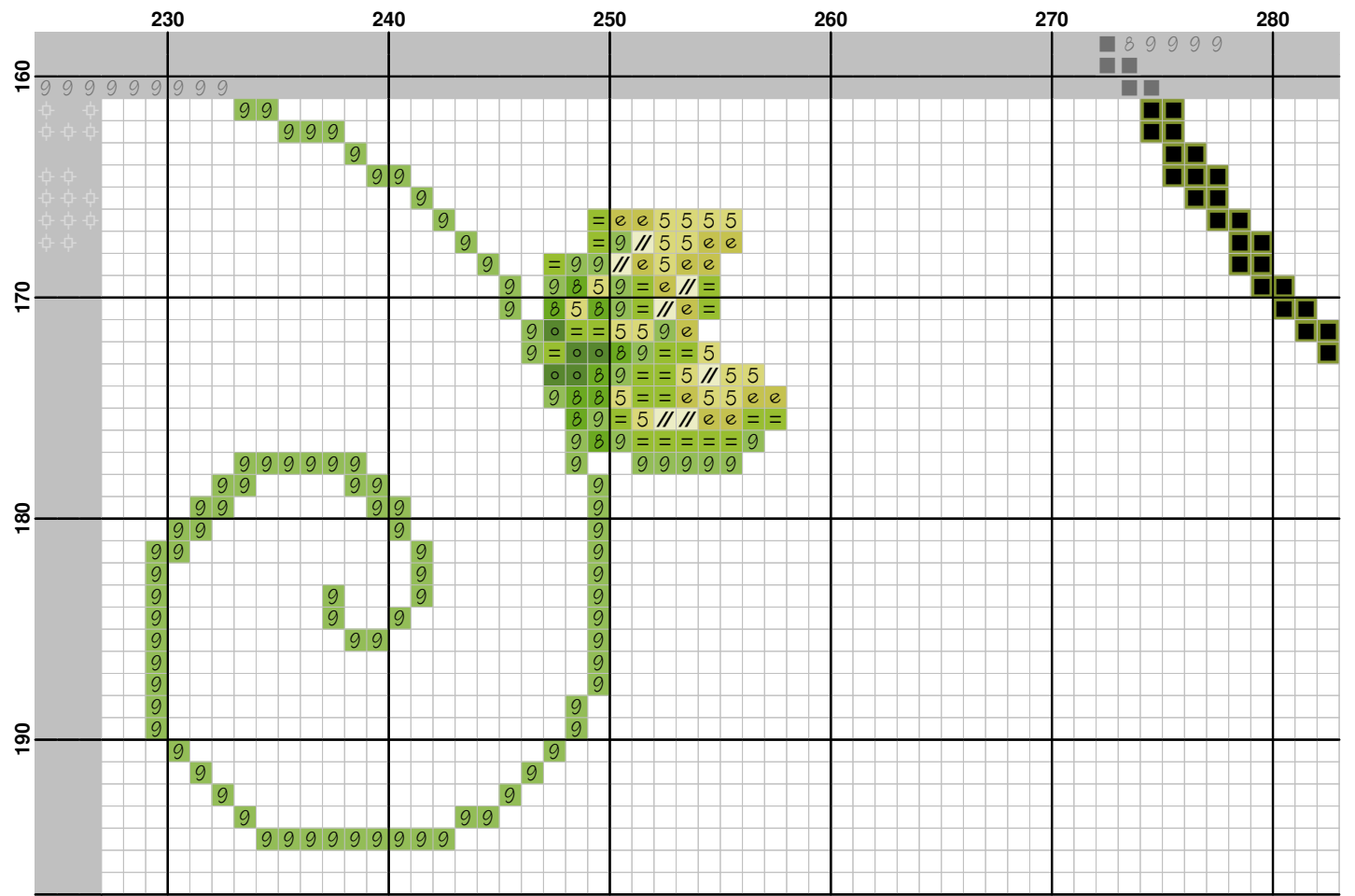
	340	350	360	370	380	390
80						
90						
100						
110						
120						
130						
140						
150						
160						

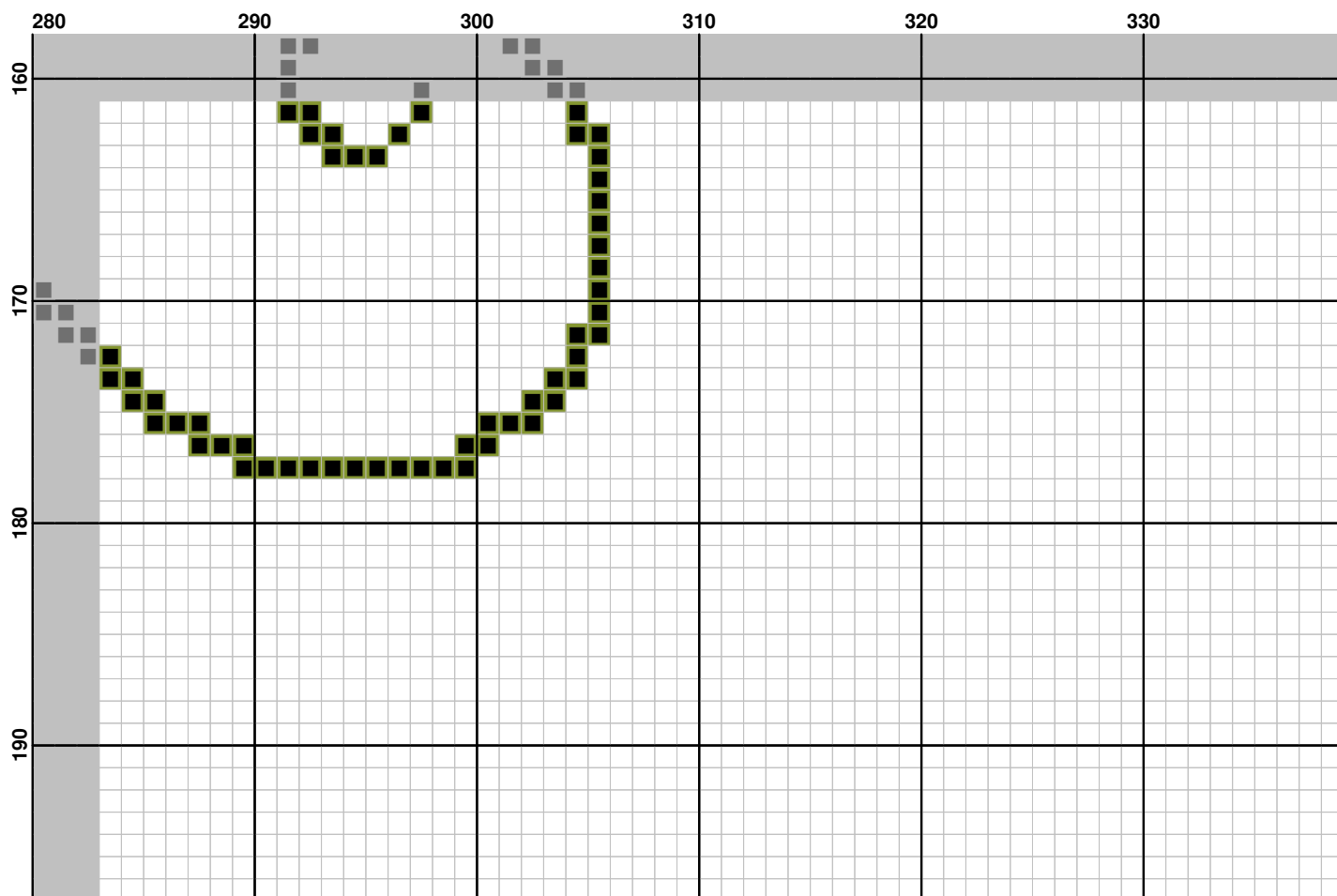


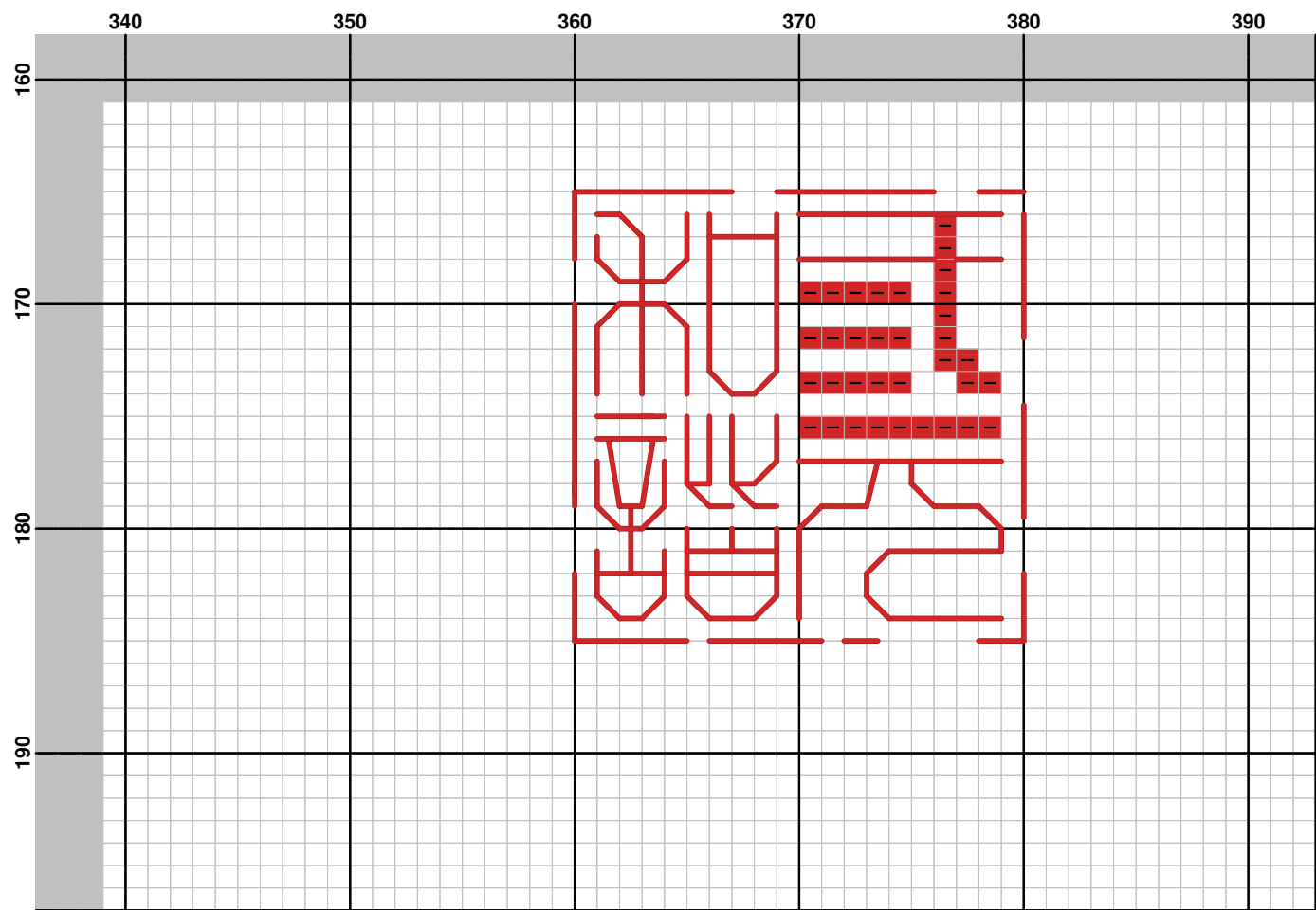











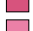
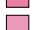
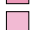
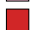








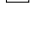








Pattern Name: 618121 Harmony
Company: KS
Fabric: Aida 14, Antique White
 389w X 193h Stitches
Size: 14 Count, 70.58w X 35.02h cm

Floss Used for Full Stitches:

Symbol	Strands	Type	Number	Color
	2	DMC	150	Dusty Rose-UL VY DK
	2	DMC	165	Moss Green-VY LT
	2	DMC	310	Black
	2	DMC	581	Moss Green
	2	DMC	600	Cranberry-VY DK
	2	DMC	602	Cranberry-MD
	2	DMC	603	Cranberry
	2	DMC	604	Cranberry-LT
	2	DMC	605	Cranberry-VY LT
	2	DMC	666	Christmas Red-BRT
	2	DMC	704	Christmas Green-VY LT
	2	DMC	818	Geranium-Pale VY LT
	2	DMC	819	Baby Pink-LT
	2	DMC	905	Parrot Green-DK
	2	DMC	906	Parrot Green-MD
	2	DMC	907	Parrot Green-LT
	2	DMC	3819	Moss Green-LT
	2	DMC	3823	Yellow-UL Pale
	2	DMC	B5200	Snow White

Floss Used for Straight Stitches:

Symbol	Strands	Type	Number	Color
	1	DMC	666	Christmas Red-BRT

Расход нитей**Нитей в мотке:** 6**Длина мотка:** 795.0 cm

Type	Number	Full	Half	Quarter	Petite	Back(cm)	Str(cm)	Spec(cm)	French	Bead	Skein Est.
DMC 150	150	790	0	0	0	0.0	0.0	0.0	0	0	1.000
DMC 165	165	1149	0	0	0	0.0	0.0	0.0	0	0	1.000
DMC 310	310	1576	0	0	0	0.0	0.0	0.0	0	0	1.000
DMC 581	581	943	0	0	0	0.0	0.0	0.0	0	0	1.000
DMC 600	600	571	0	0	0	0.0	0.0	0.0	0	0	1.000
DMC 602	602	931	0	0	0	0.0	0.0	0.0	0	0	1.000
DMC 603	603	1622	0	0	0	0.0	0.0	0.0	0	0	1.000
DMC 604	604	2247	0	0	0	0.0	0.0	0.0	0	0	1.000
DMC 605	605	2709	0	0	0	0.0	0.0	0.0	0	0	2.000
DMC 666	34	34	0	0	0	0.0	34.0	0.0	0	0	1.000
DMC 704	704	1575	0	0	0	0.0	0.0	0.0	0	0	1.000
DMC 818	818	2752	0	0	0	0.0	0.0	0.0	0	0	2.000
DMC 819	819	2472	0	0	0	0.0	0.0	0.0	0	0	2.000
DMC 905	204	204	0	0	0	0.0	0.0	0.0	0	0	1.000
DMC 906	438	438	0	0	0	0.0	0.0	0.0	0	0	1.000
DMC 907	1098	1098	0	0	0	0.0	0.0	0.0	0	0	1.000
DMC 3819	819	819	0	0	0	0.0	0.0	0.0	0	0	1.000
DMC 3823	317	317	0	0	0	0.0	0.0	0.0	0	0	1.000
DMC B5200	621	621	0	0	0	0.0	0.0	0.0	0	0	1.000