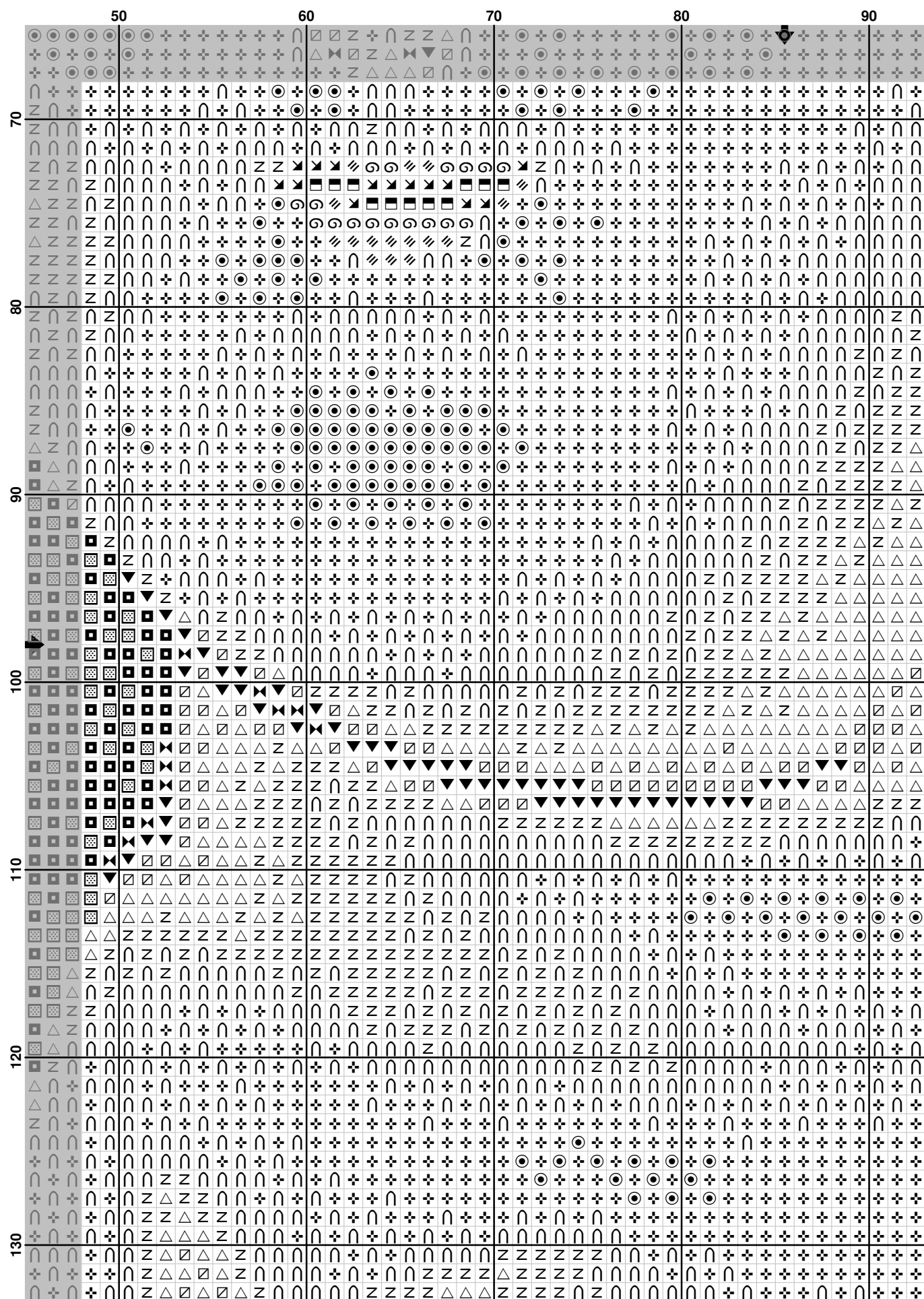
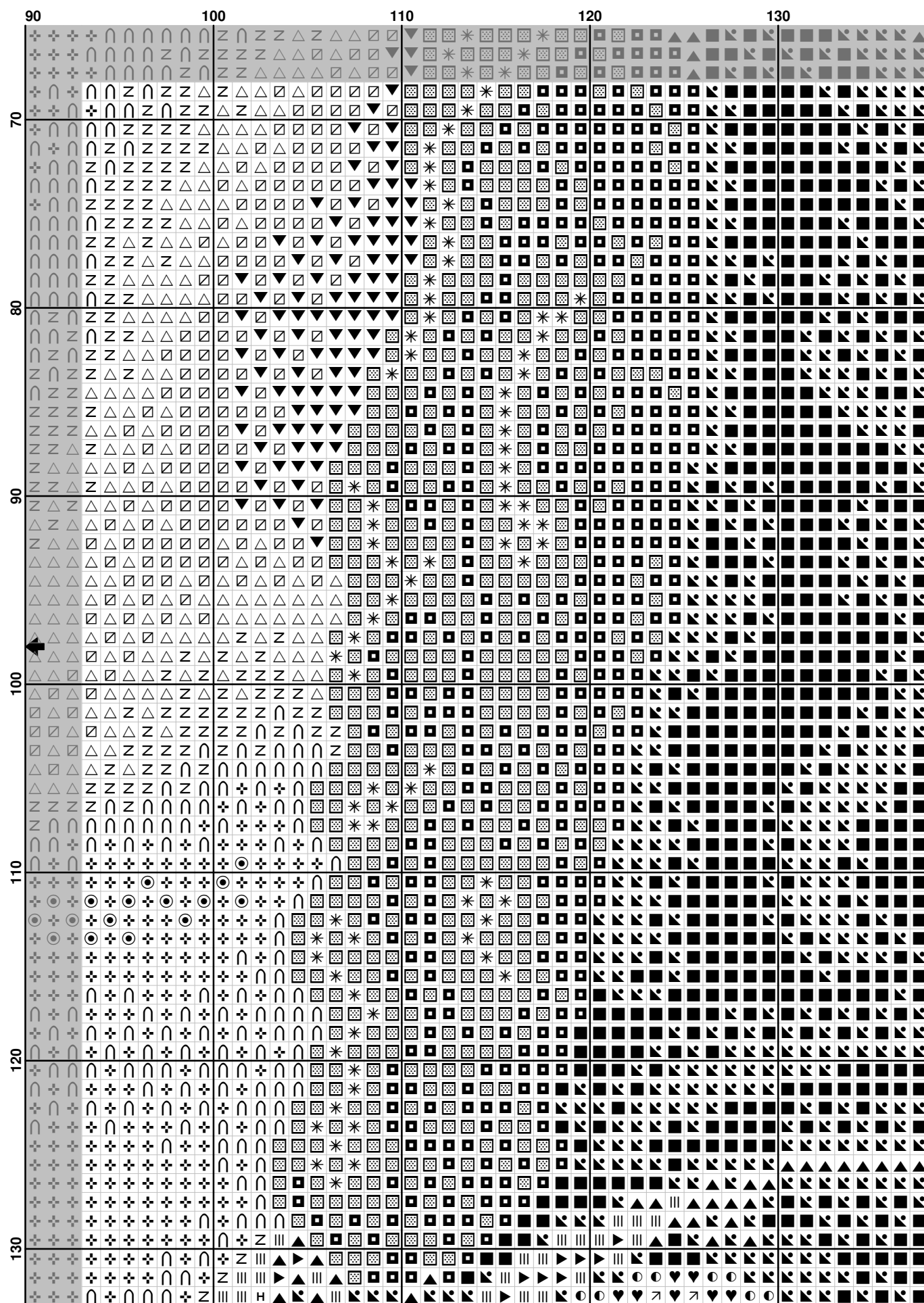
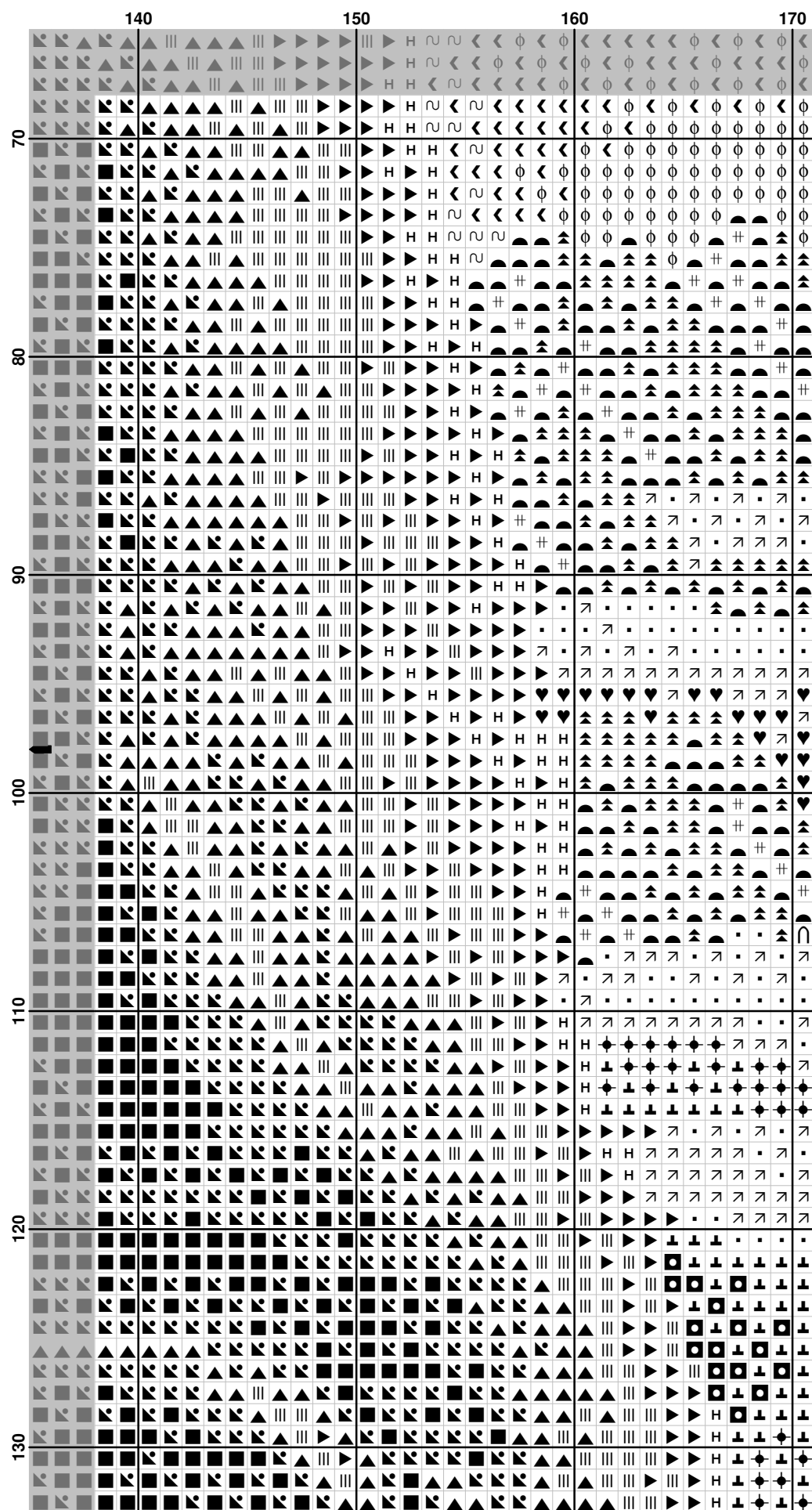




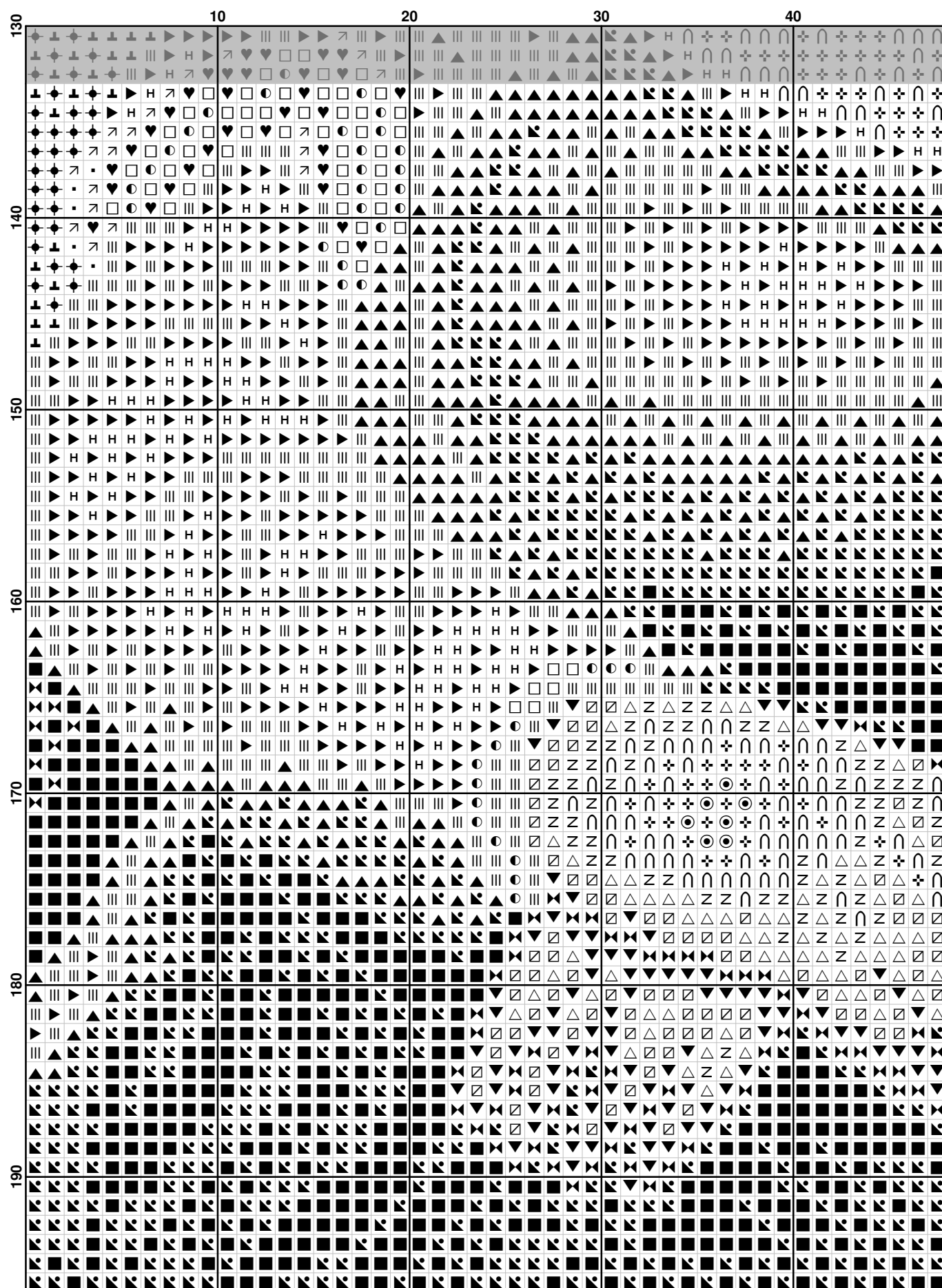
[illegible]

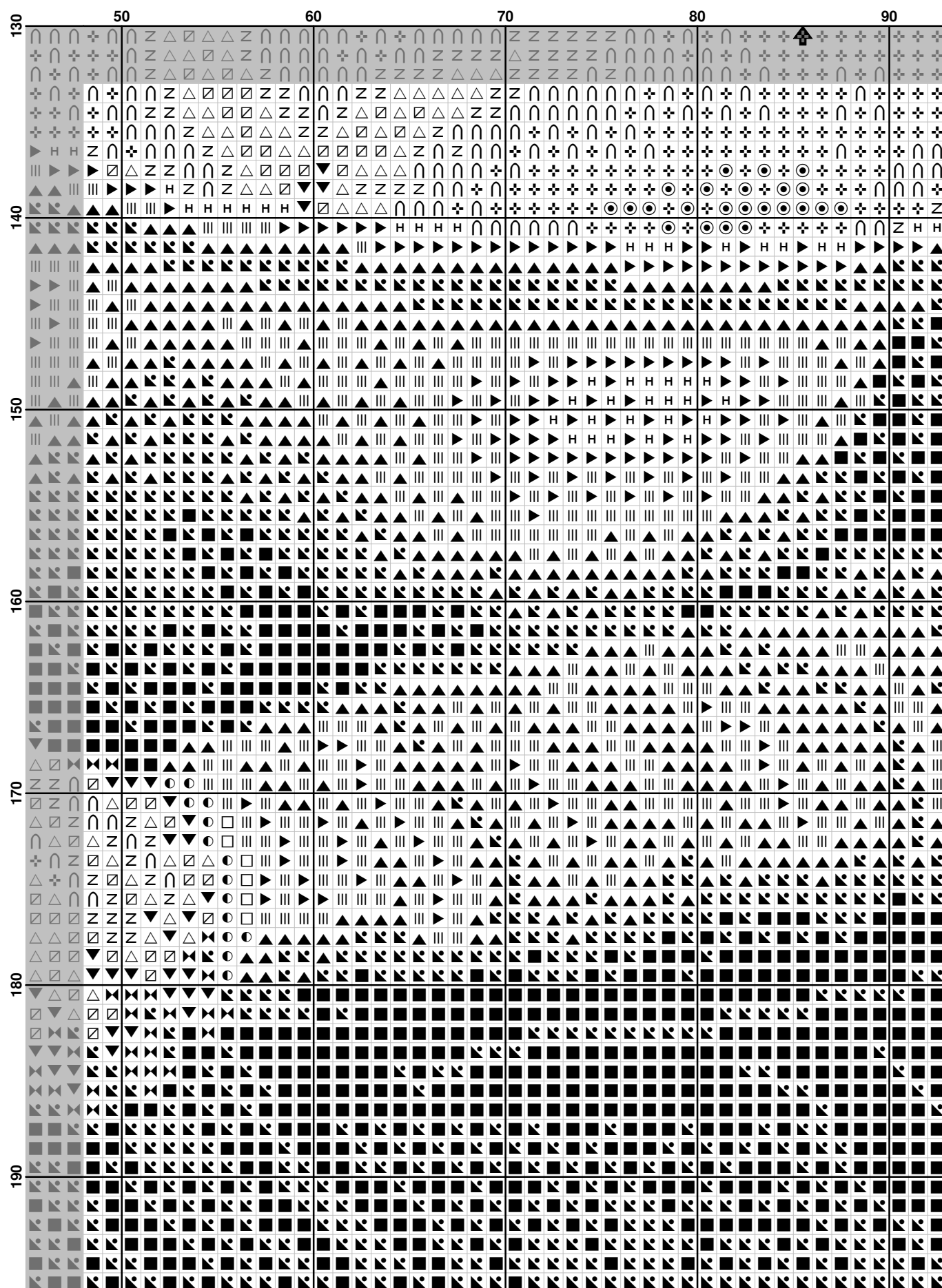


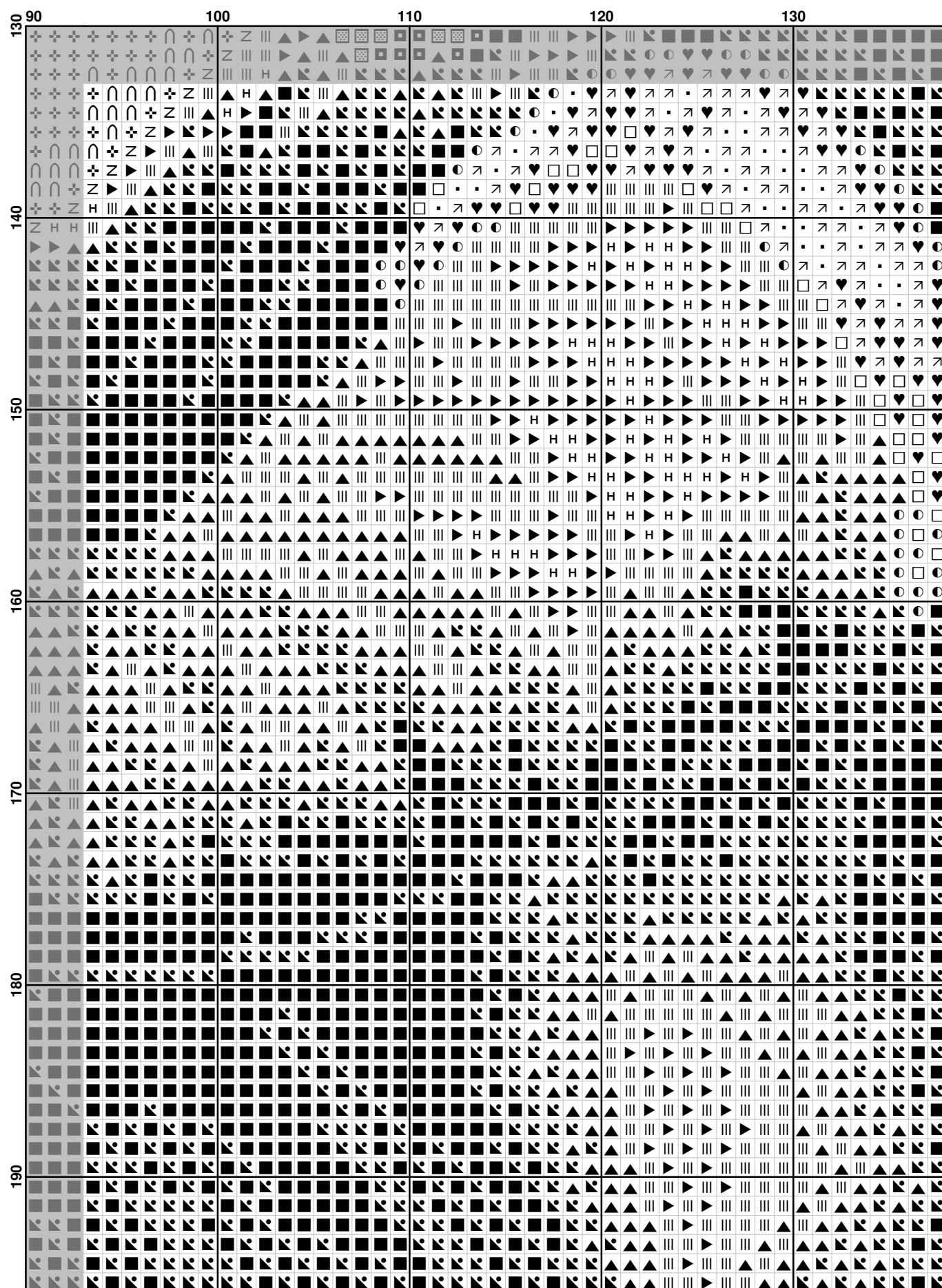


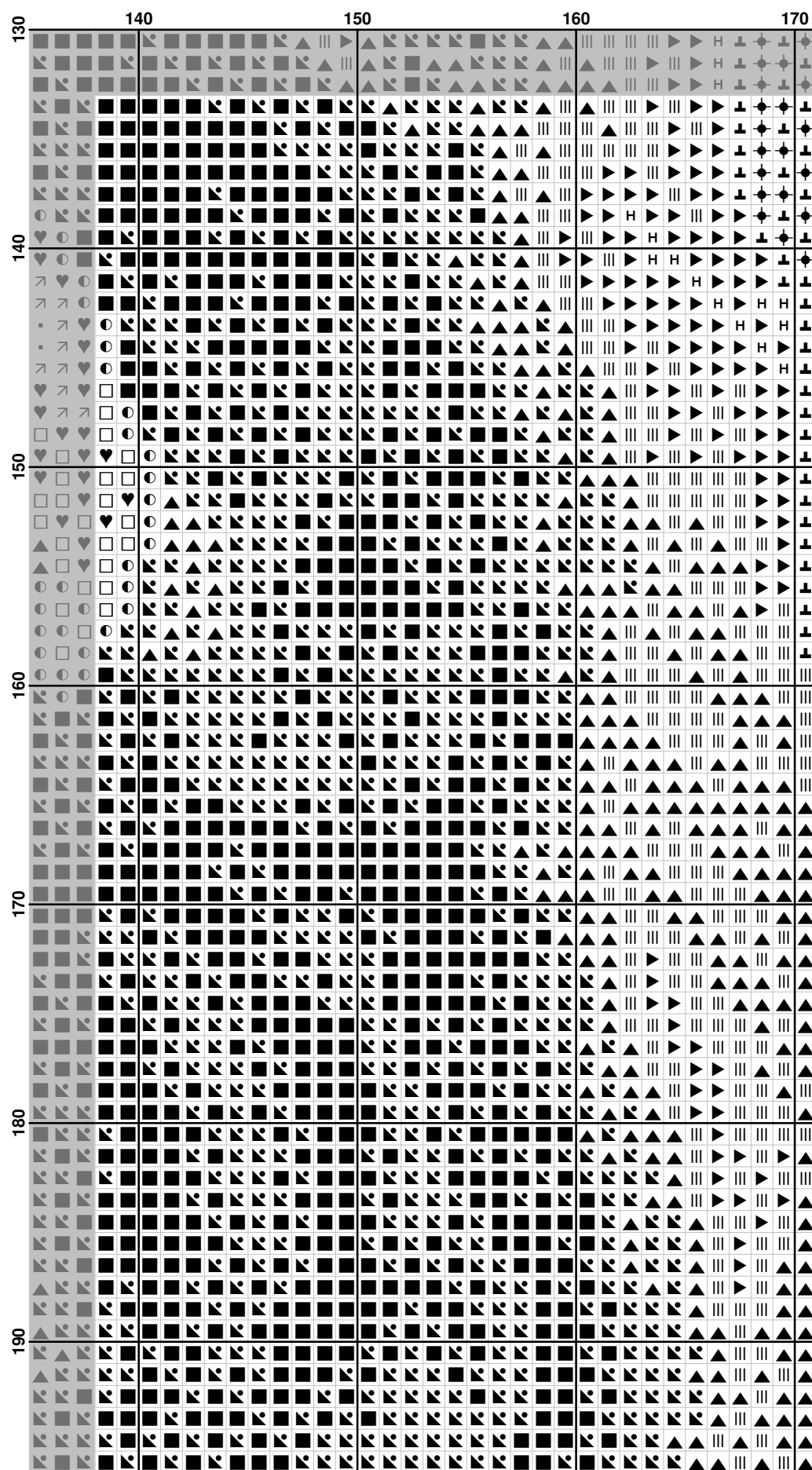












**Pattern Name:** CF-05-752 Mona Lisa de Botero  
**Designed By:** Eder Kits  
**Copyright:** перенабор ЯшерКaa  
**Fabric:** Aida 14, White  
 171w X 196h Stitches  
**Size(s) :** 14 Count, 31.02w X 35.56h cm  
 16 Count, 27.15w X 31.11h cm  
 18 Count, 24.13w X 27.66h cm

**Floss Used for Full Stitches:**

Symbol	Strands	Type	Number	Color
	2	DMC	310	Black
	2	DMC	319	Pistachio Green-VY DK
	2	DMC	320	Pistachio Green-MD
	2	DMC	347	Salmon-VY DK
	2	DMC	367	Pistachio Green-DK
	2	DMC	368	Pistachio Green-LT
	2	DMC	407	Desert Sand-DK
	2	DMC	420	Hazelnut Brown-DK
	2	DMC	433	Brown-MD
	2	DMC	434	Brown-LT
	2	DMC	632	Desert Sand-UL VY DK
	2	DMC	760	Salmon
	2	DMC	839	Beige Brown-DK
	2	DMC	869	Hazelnut Brown-VY DK
	2	DMC	890	Pistachio Green-UL DK
	2	DMC	934	Avocado Green-VY DK
	2	DMC	938	Coffee Brown-UL DK
	2	DMC	945	Tawny
	2	DMC	950	Desert Sand-LT
	2	DMC	3011	Khaki Green-DK
	2	DMC	3012	Khaki Green-MD
	2	DMC	3013	Khaki Green-LT
	2	DMC	3032	Mocha Brown-MD
	2	DMC	3033	Mocha Brown-VY LT
	2	DMC	3328	Salmon-DK
	2	DMC	3362	Pine Green-DK
	2	DMC	3363	Pine Green-MD
	2	DMC	3364	Pine Green
	2	DMC	3712	Salmon-MD
	2	DMC	3771	Terra Cotta-UL VY LT
	2	DMC	3772	Desert Sand-VY DK
	2	DMC	3782	Mocha Brown-LT
	2	DMC	3790	Beige Gray-UL DK
	2	DMC	3828	Hazelnut Brown
	2	DMC	3866	Beige Brown-UL VY LT
	1	DMC	368	Pistachio Green-LT
	1	DMC	320	Pistachio Green-MD
	1	DMC	3771	Terra Cotta-UL VY LT
	1	DMC	407	Desert Sand-DK
	1	DMC	3363	Pine Green-MD
	1	DMC	3362	Pine Green-DK
	1	DMC	369	Pistachio Green-VY LT
	1	DMC	368	Pistachio Green-LT
	1	DMC	367	Pistachio Green-DK
	1	DMC	319	Pistachio Green-VY DK



**Расход нитей****Нитей в мотке:** 6**Длина мотка:** 795.0 cm

Type	Number	Full	Half	Quarter	Petite	Back(cm)	Str(cm)	Spec(cm)	French	Bead	Skein Est.
DMC	310	3862	0	0	0	0.0	0.0	0.0	0	0	2.000
DMC	319	919	0	0	0	0.0	0.0	0.0	0	0	1.000
DMC	320	293	0	0	0	0.0	0.0	0.0	0	0	1.000
DMC	347	11	0	0	0	0.0	0.0	0.0	0	0	1.000
DMC	367	452	0	0	0	0.0	0.0	0.0	0	0	1.000
DMC	368	368	0	0	0	0.0	0.0	0.0	0	0	1.000
DMC	407	626	0	0	0	0.0	0.0	0.0	0	0	1.000
DMC	420	216	0	0	0	0.0	0.0	0.0	0	0	1.000
DMC	433	1644	0	0	0	0.0	0.0	0.0	0	0	1.000
DMC	434	311	0	0	0	0.0	0.0	0.0	0	0	1.000
DMC	632	315	0	0	0	0.0	0.0	0.0	0	0	1.000
DMC	760	17	0	0	0	0.0	0.0	0.0	0	0	1.000
DMC	839	169	0	0	0	0.0	0.0	0.0	0	0	1.000
DMC	869	124	0	0	0	0.0	0.0	0.0	0	0	1.000
DMC	890	1707	0	0	0	0.0	0.0	0.0	0	0	1.000
DMC	934	4575	0	0	0	0.0	0.0	0.0	0	0	2.000
DMC	938	1287	0	0	0	0.0	0.0	0.0	0	0	1.000
DMC	945	2656	0	0	0	0.0	0.0	0.0	0	0	2.000
DMC	950	601	0	0	0	0.0	0.0	0.0	0	0	1.000
DMC	3011	365	0	0	0	0.0	0.0	0.0	0	0	1.000
DMC	3012	409	0	0	0	0.0	0.0	0.0	0	0	1.000
DMC	3013	69	0	0	0	0.0	0.0	0.0	0	0	1.000
DMC	3032	198	0	0	0	0.0	0.0	0.0	0	0	1.000
DMC	3033	255	0	0	0	0.0	0.0	0.0	0	0	1.000
DMC	3328	14	0	0	0	0.0	0.0	0.0	0	0	1.000
DMC	3362	2652	0	0	0	0.0	0.0	0.0	0	0	2.000
DMC	3363	1438	0	0	0	0.0	0.0	0.0	0	0	1.000
DMC	3364	353	0	0	0	0.0	0.0	0.0	0	0	1.000
DMC	3712	16	0	0	0	0.0	0.0	0.0	0	0	1.000
DMC	3771	2209	0	0	0	0.0	0.0	0.0	0	0	1.000
DMC	3772	453	0	0	0	0.0	0.0	0.0	0	0	1.000
DMC	3782	181	0	0	0	0.0	0.0	0.0	0	0	1.000
DMC	3790	150	0	0	0	0.0	0.0	0.0	0	0	1.000
DMC	3828	144	0	0	0	0.0	0.0	0.0	0	0	1.000
DMC	3866	168	0	0	0	0.0	0.0	0.0	0	0	1.000
DMC	368	421	0	0	0	0.0	0.0	0.0	0	0	1.000
DMC	320										
DMC	3771	1023	0	0	0	0.0	0.0	0.0	0	0	1.000
DMC	407										
DMC	3363	2028	0	0	0	0.0	0.0	0.0	0	0	1.000
DMC	3362										
DMC	369	151	0	0	0	0.0	0.0	0.0	0	0	1.000
DMC	368										
DMC	367	666	0	0	0	0.0	0.0	0.0	0	0	1.000
DMC	319										