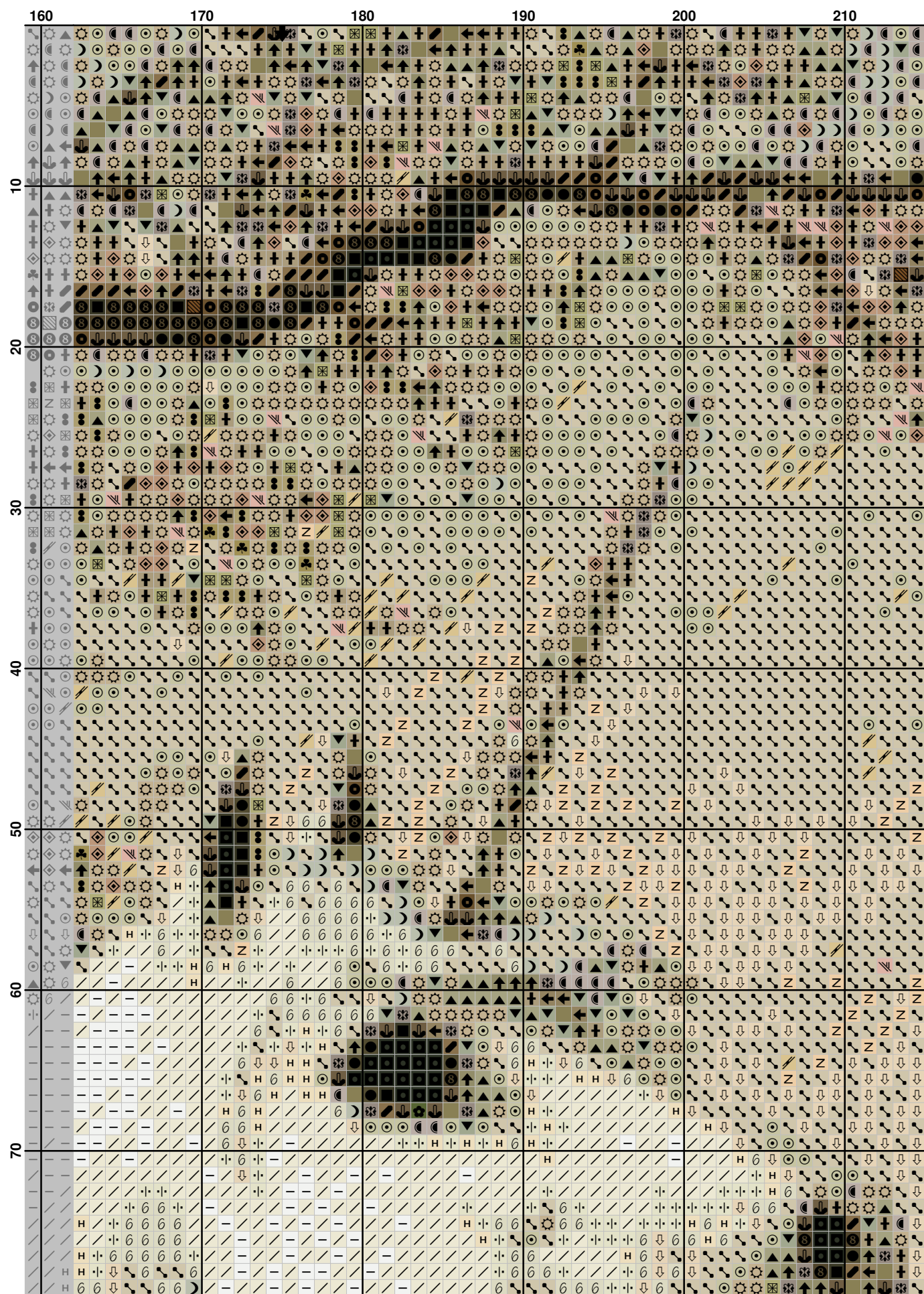


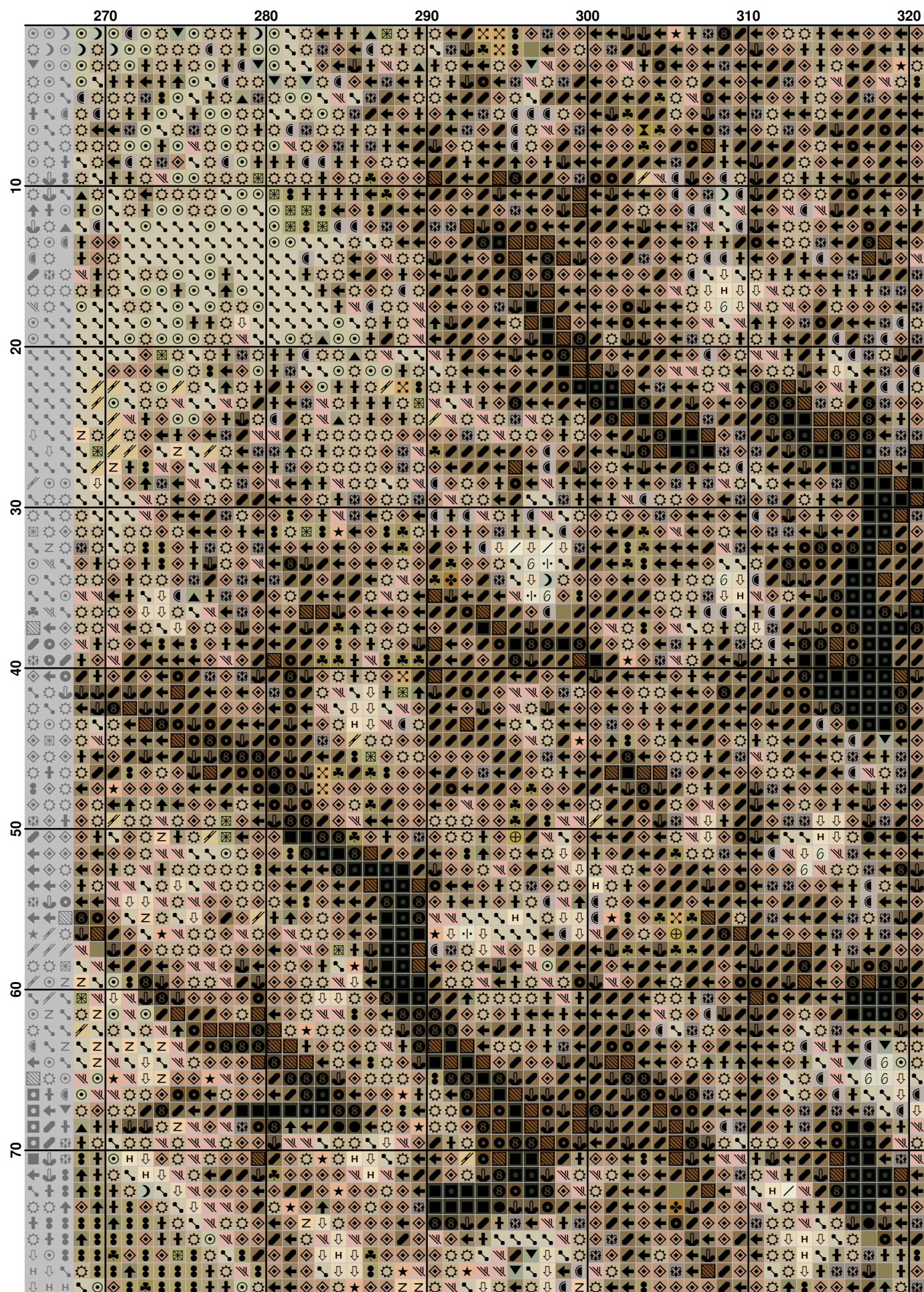


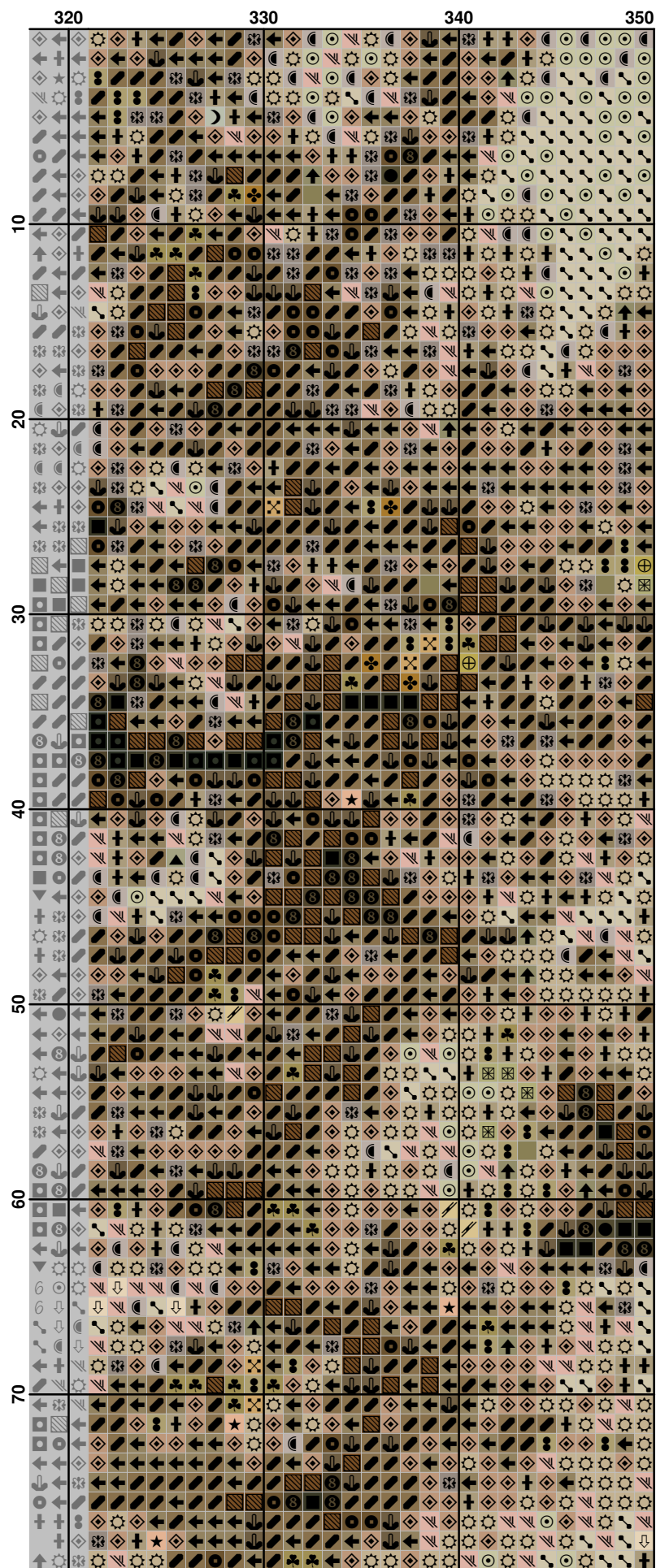


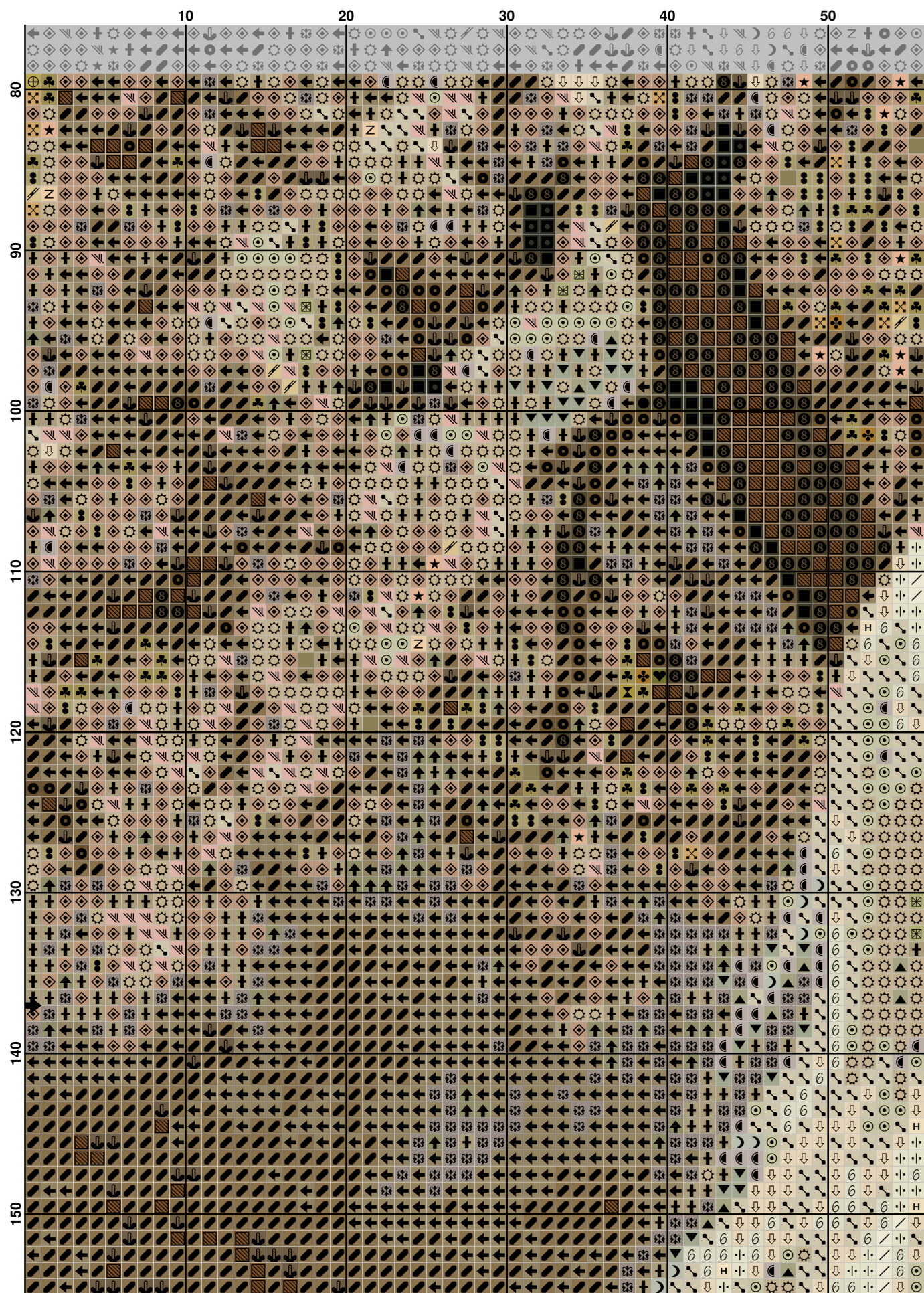
	110	120	130	140	150	160
10						
20						
30						
40						
50						
60						
70						

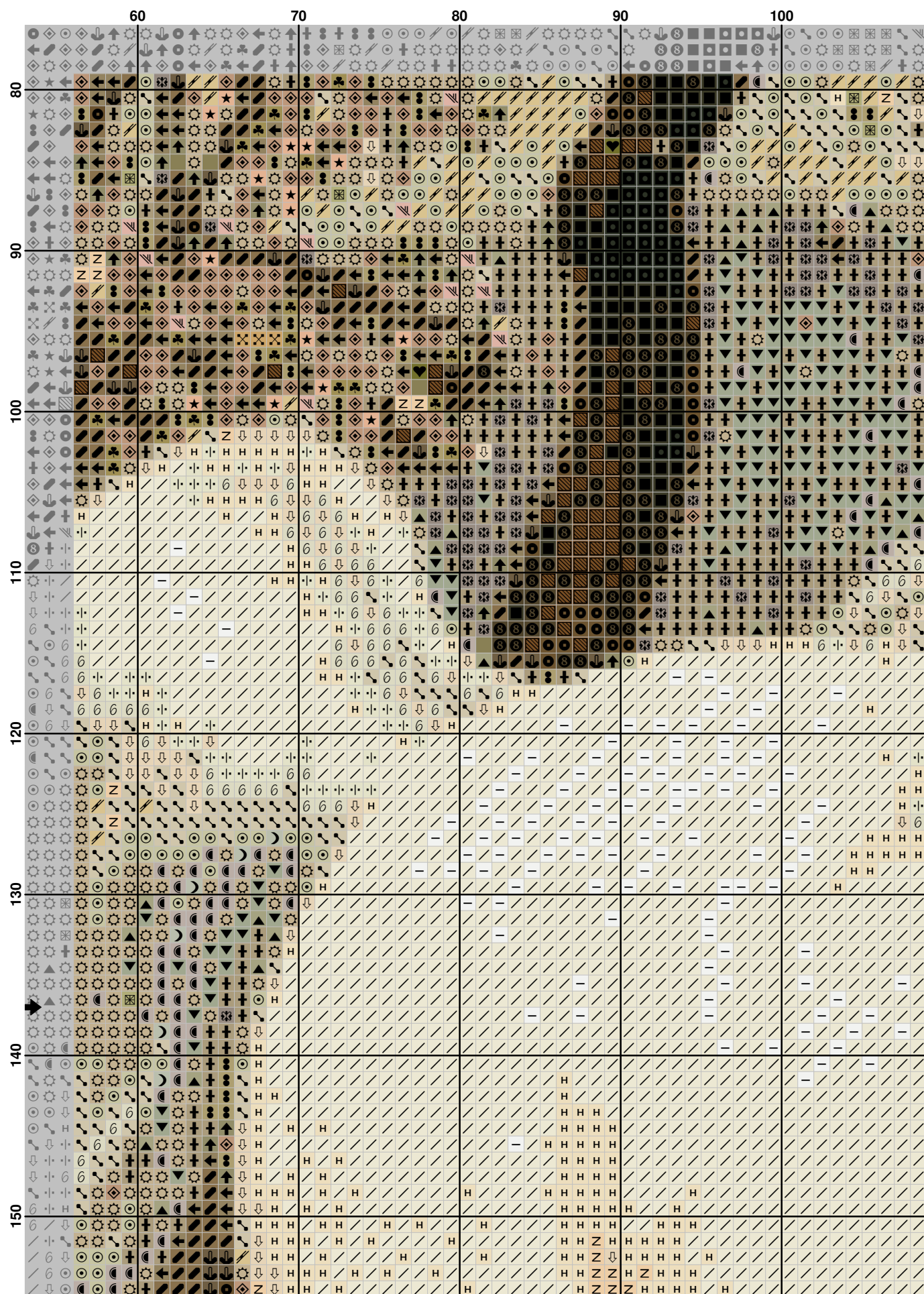




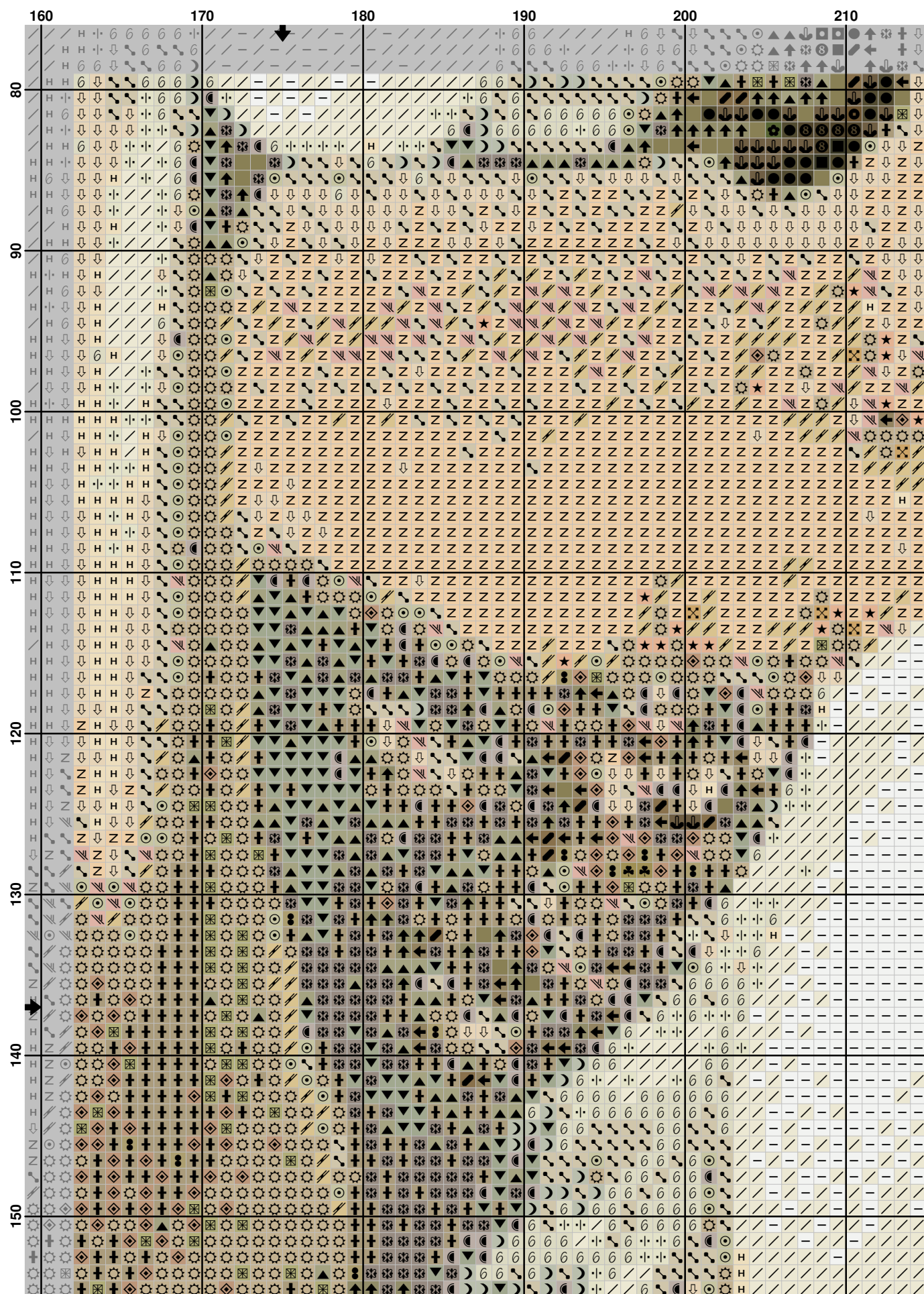


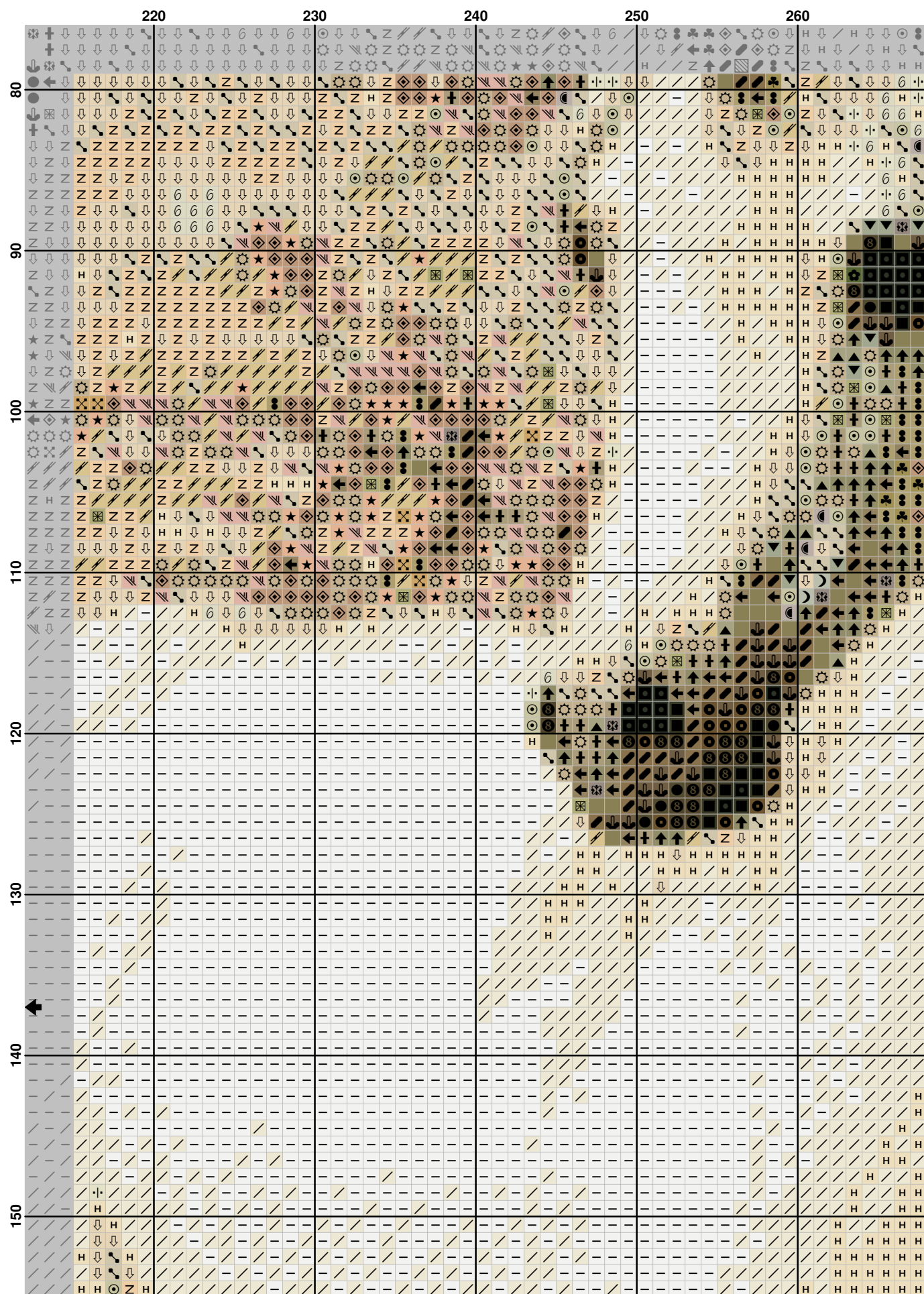


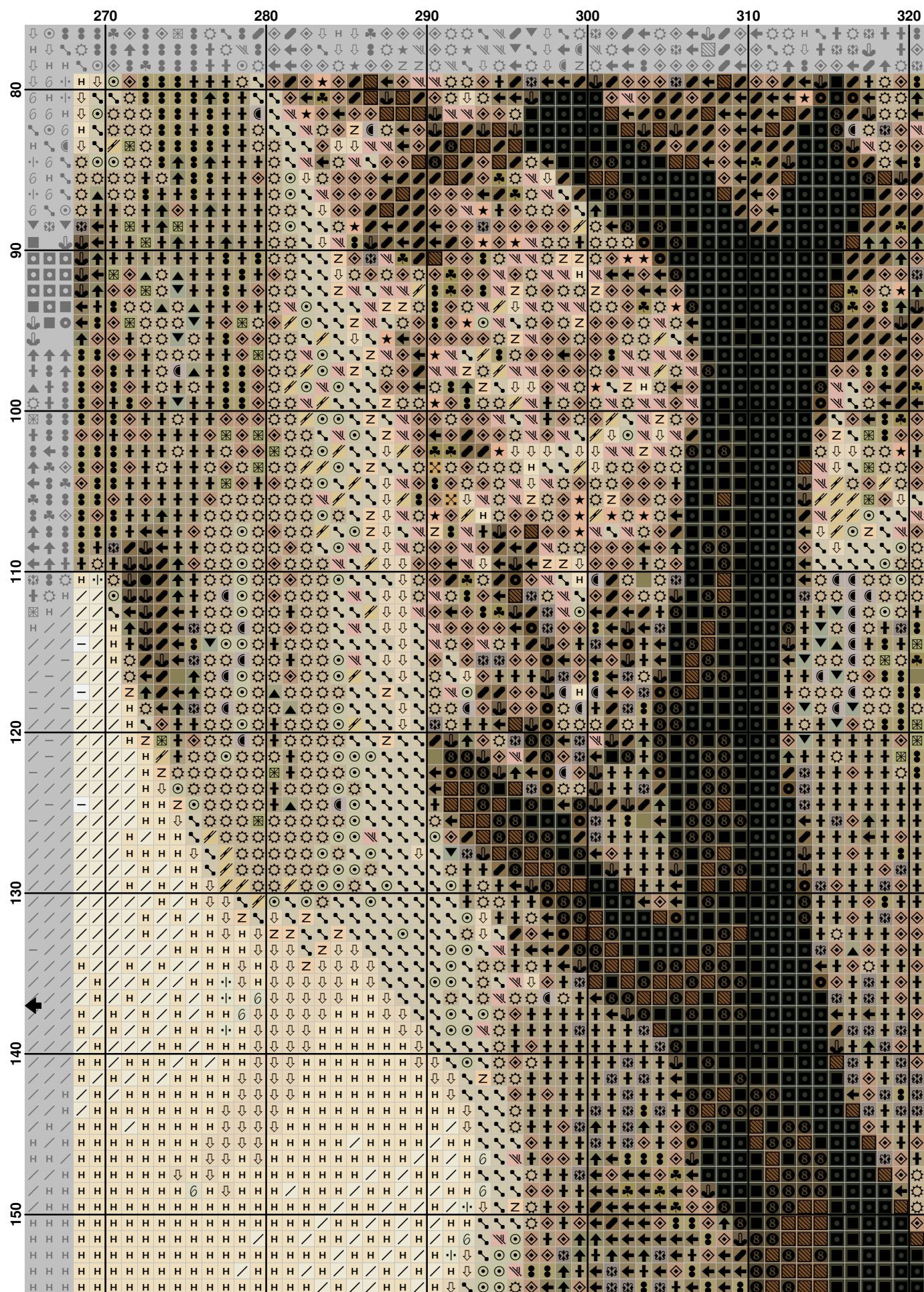


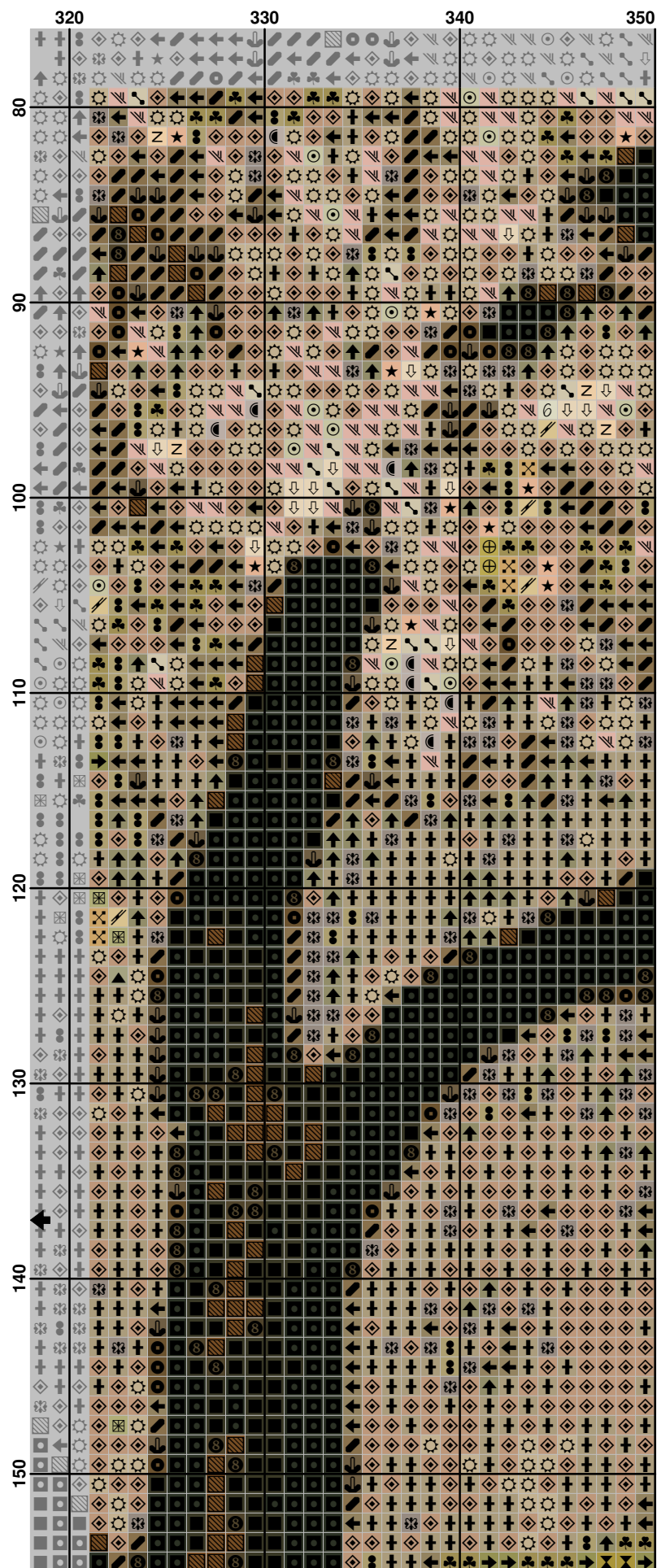


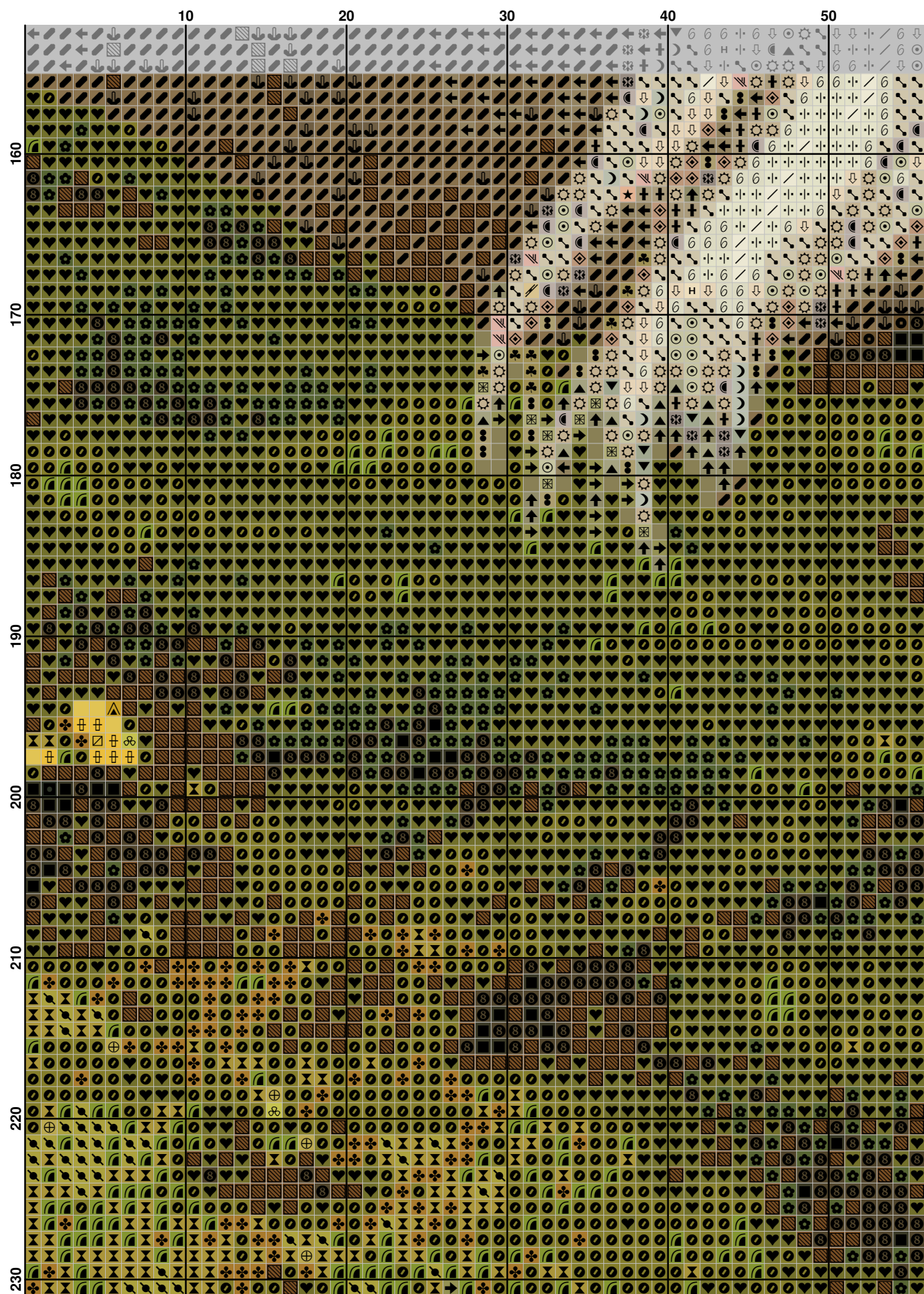


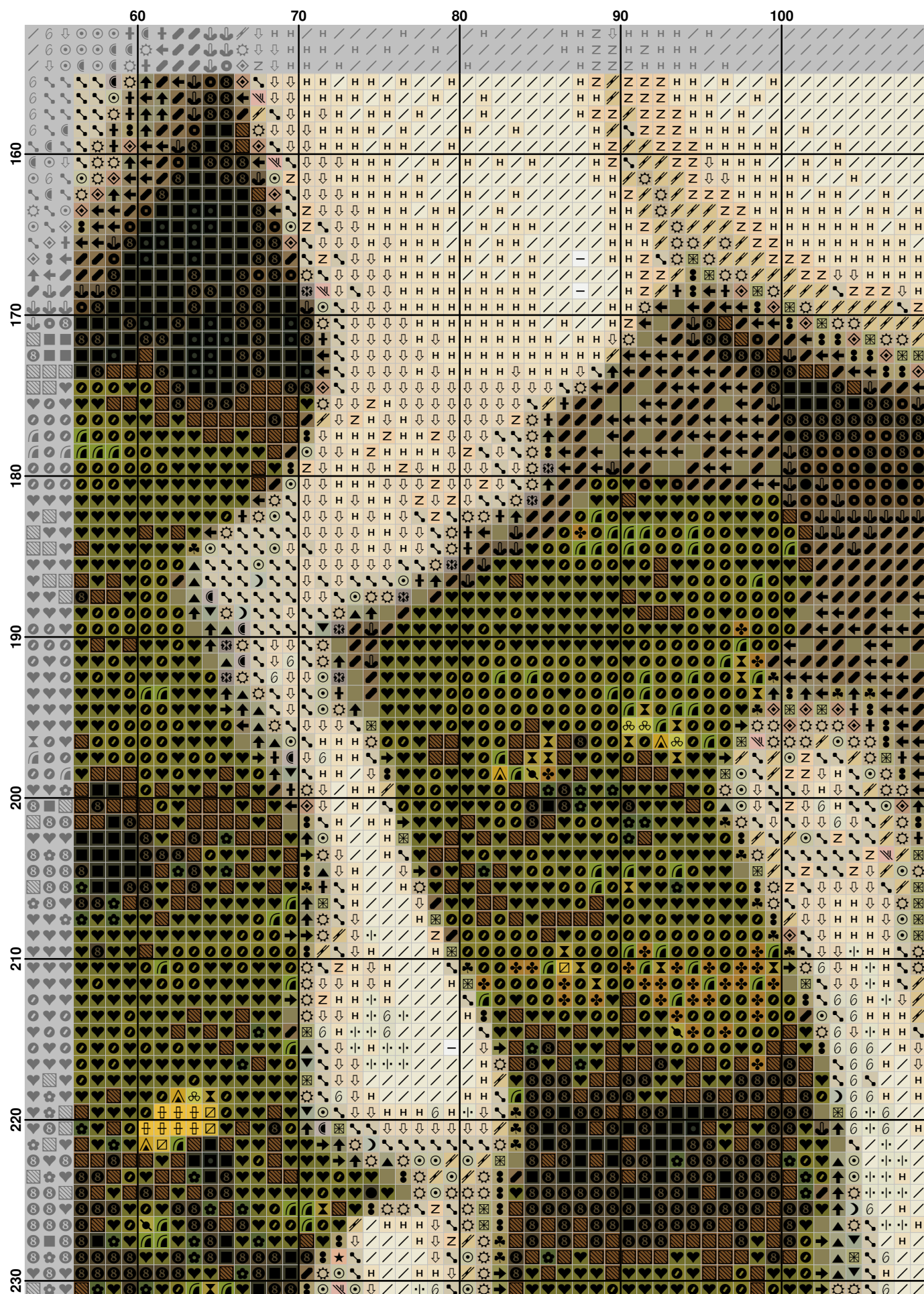


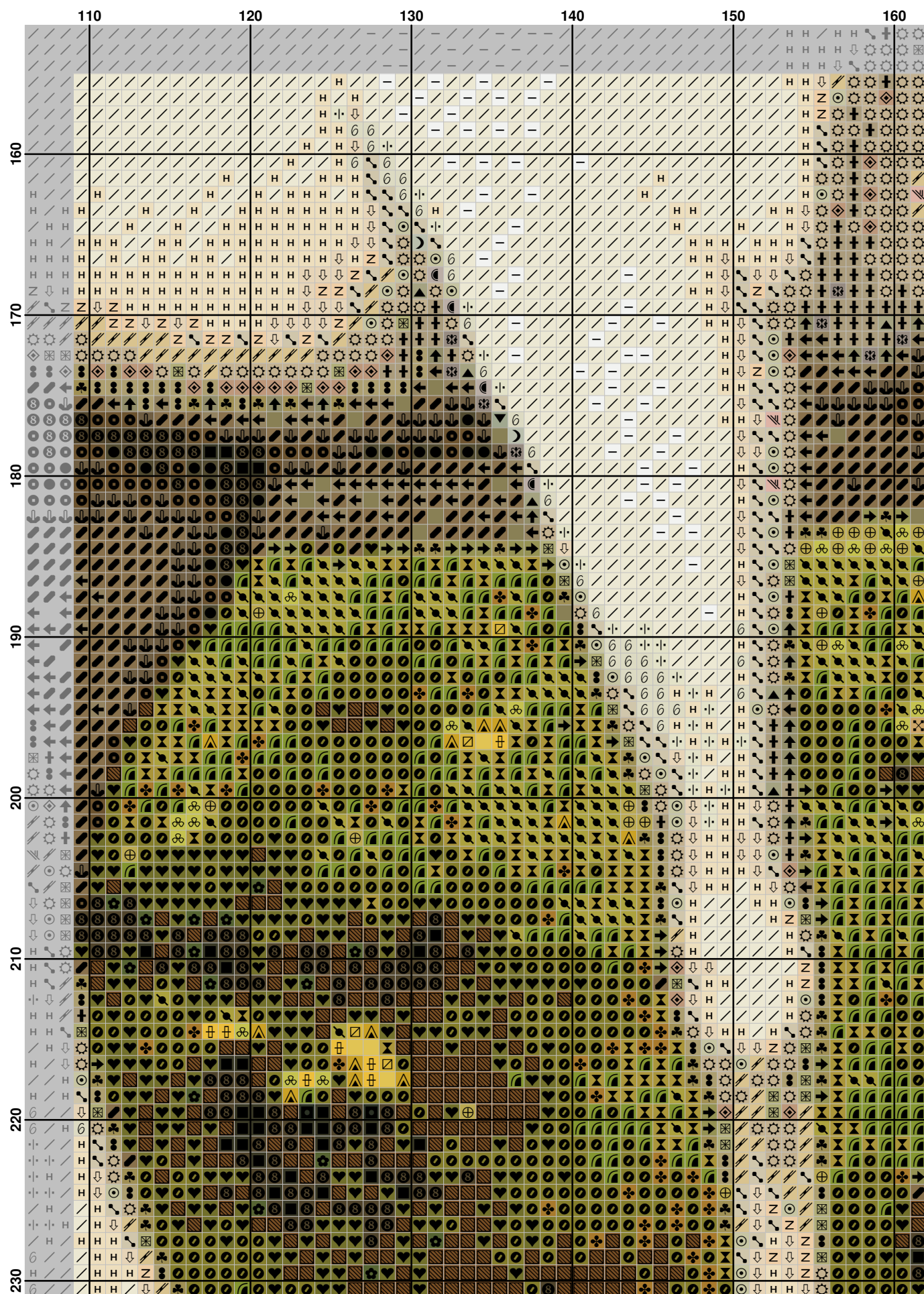


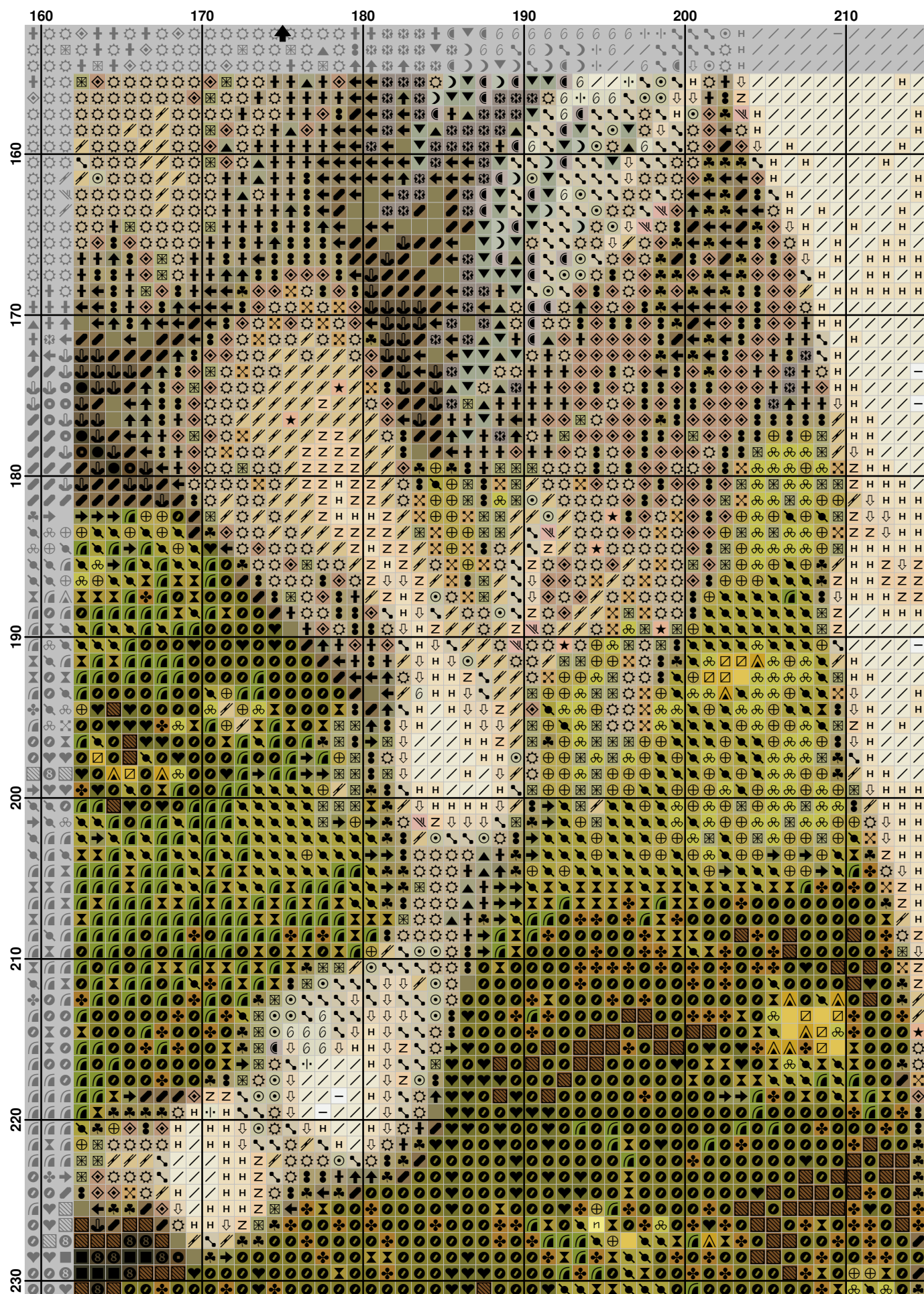


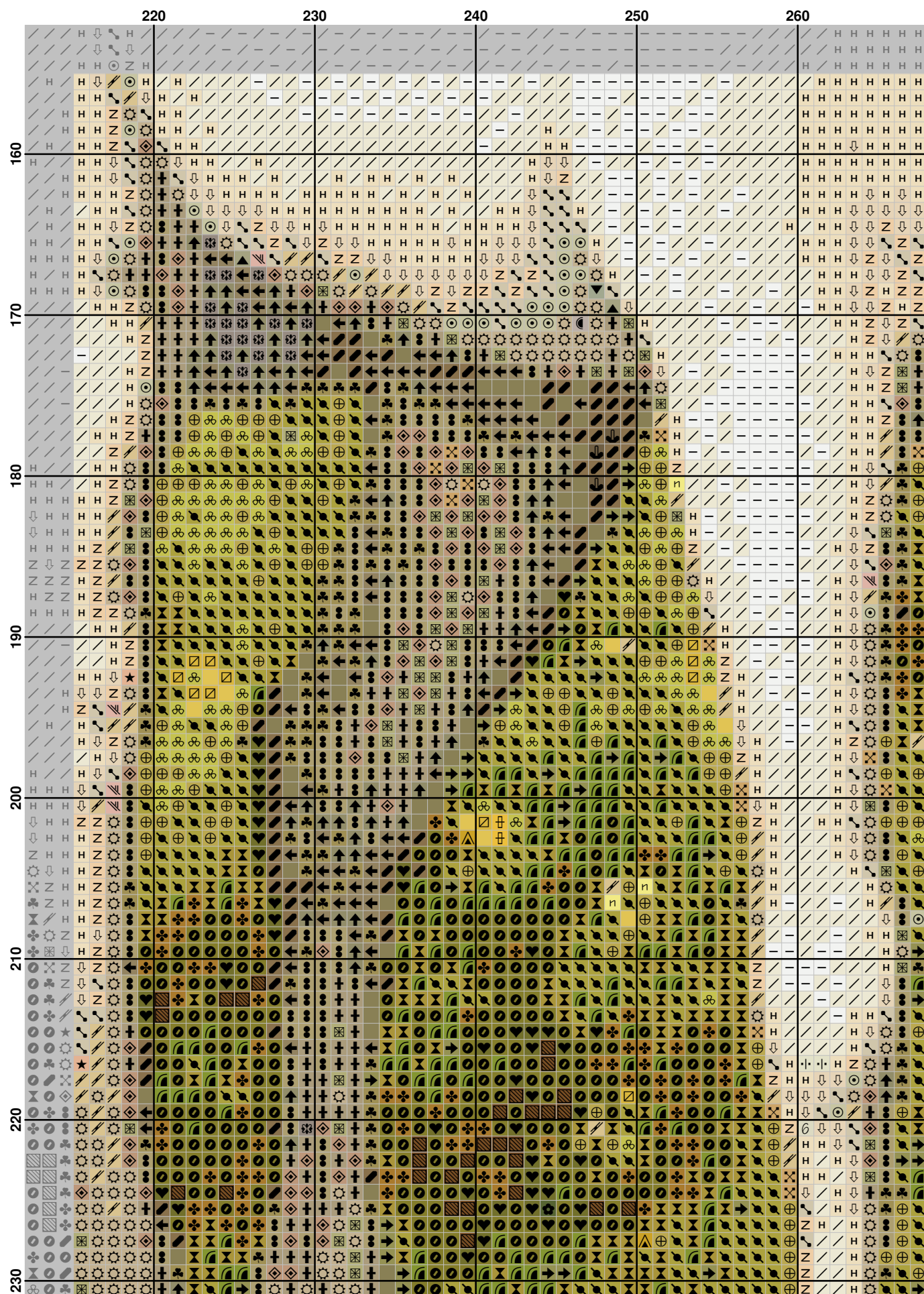


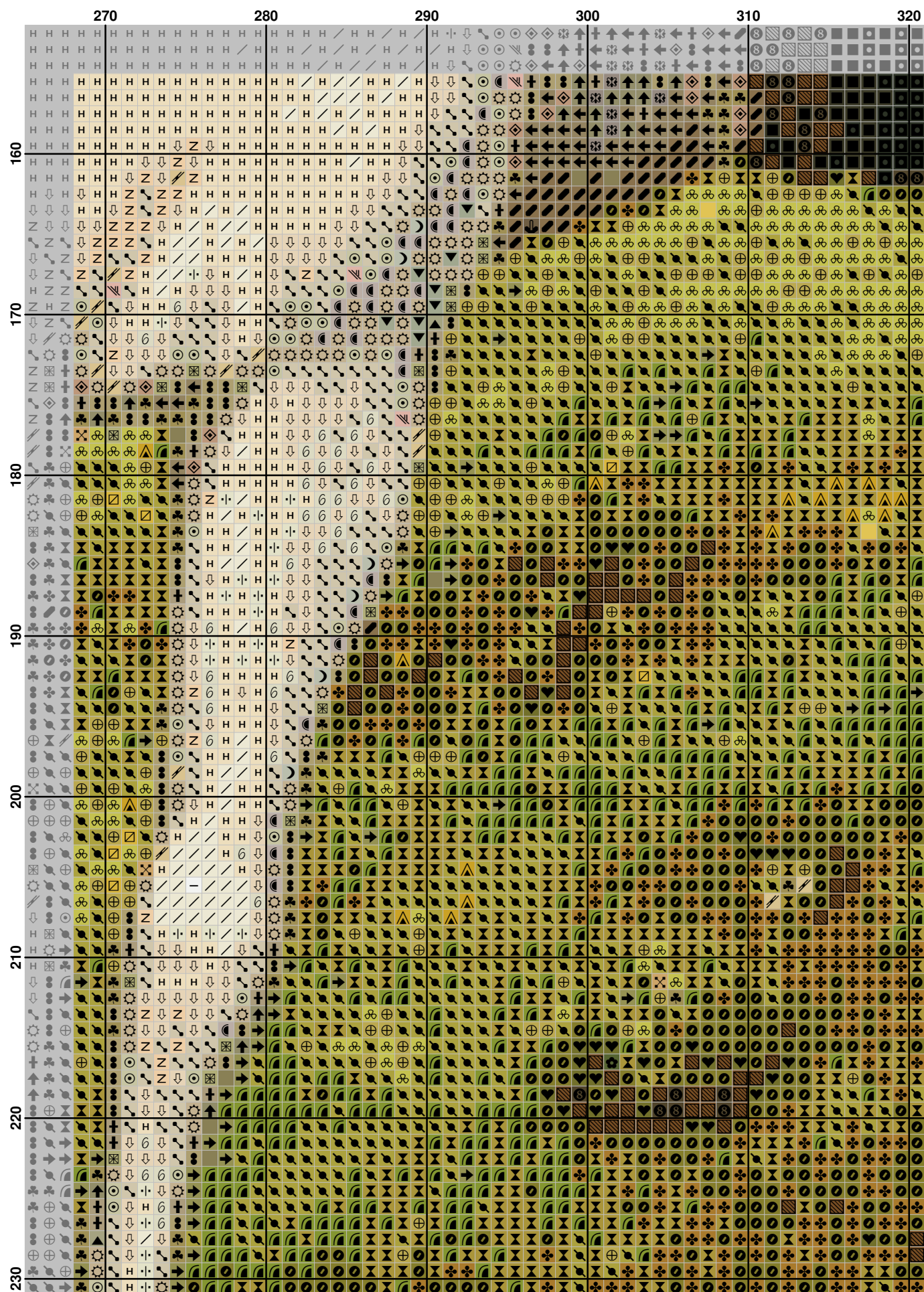


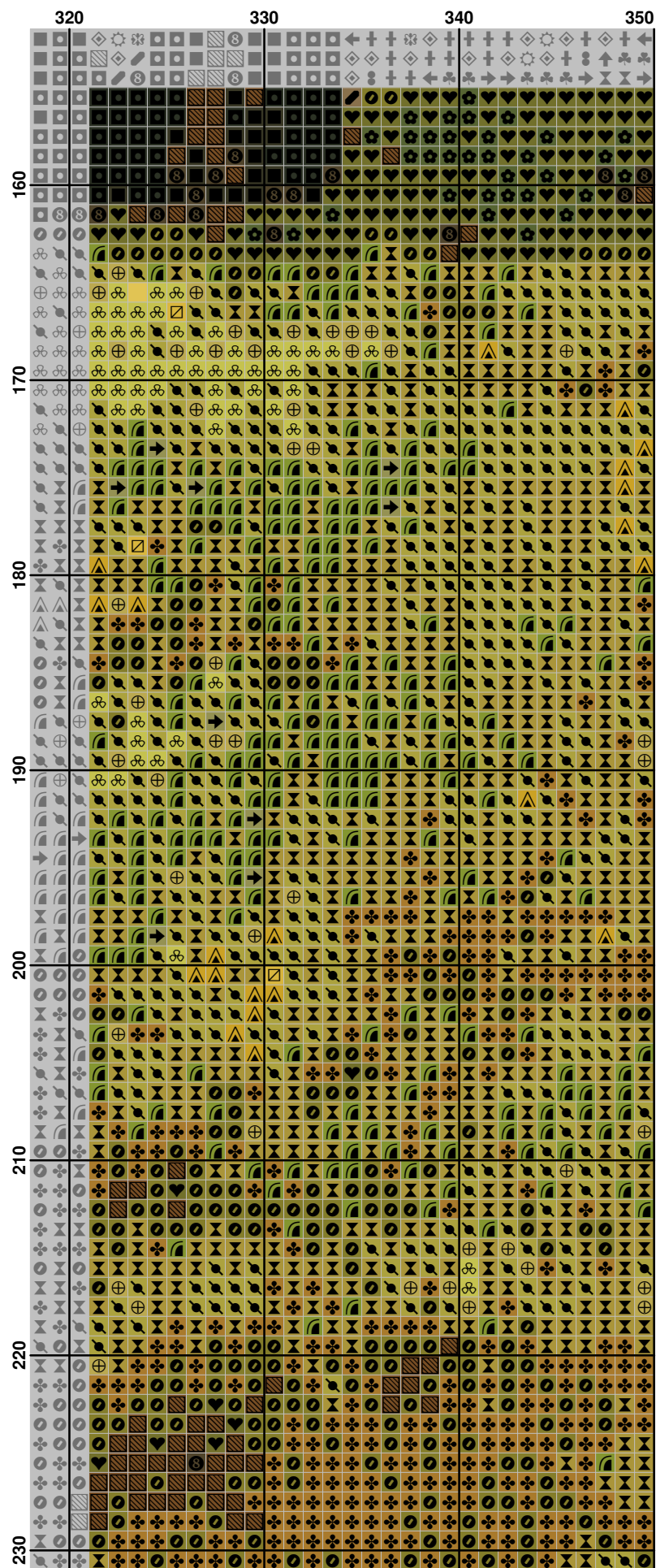


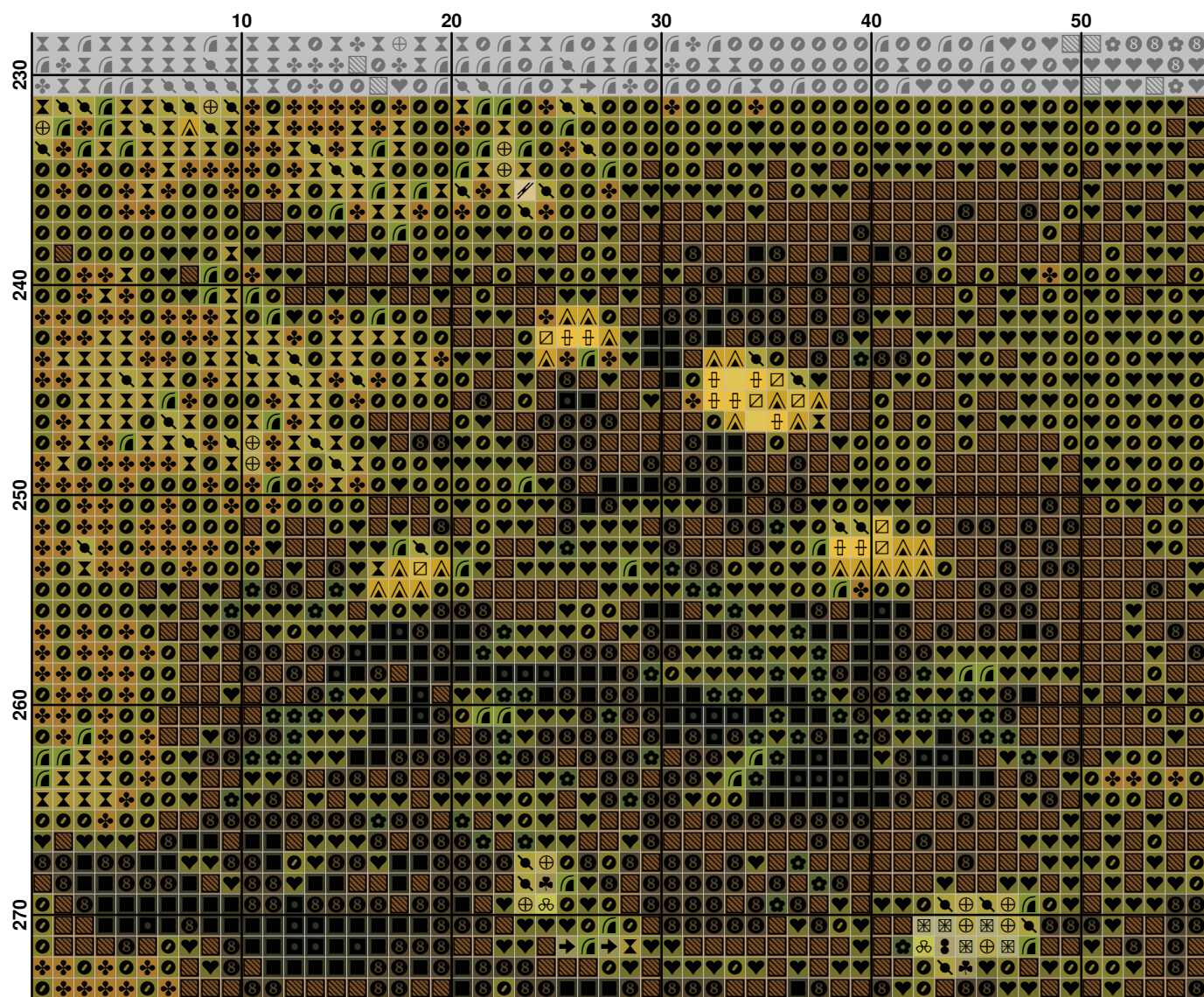


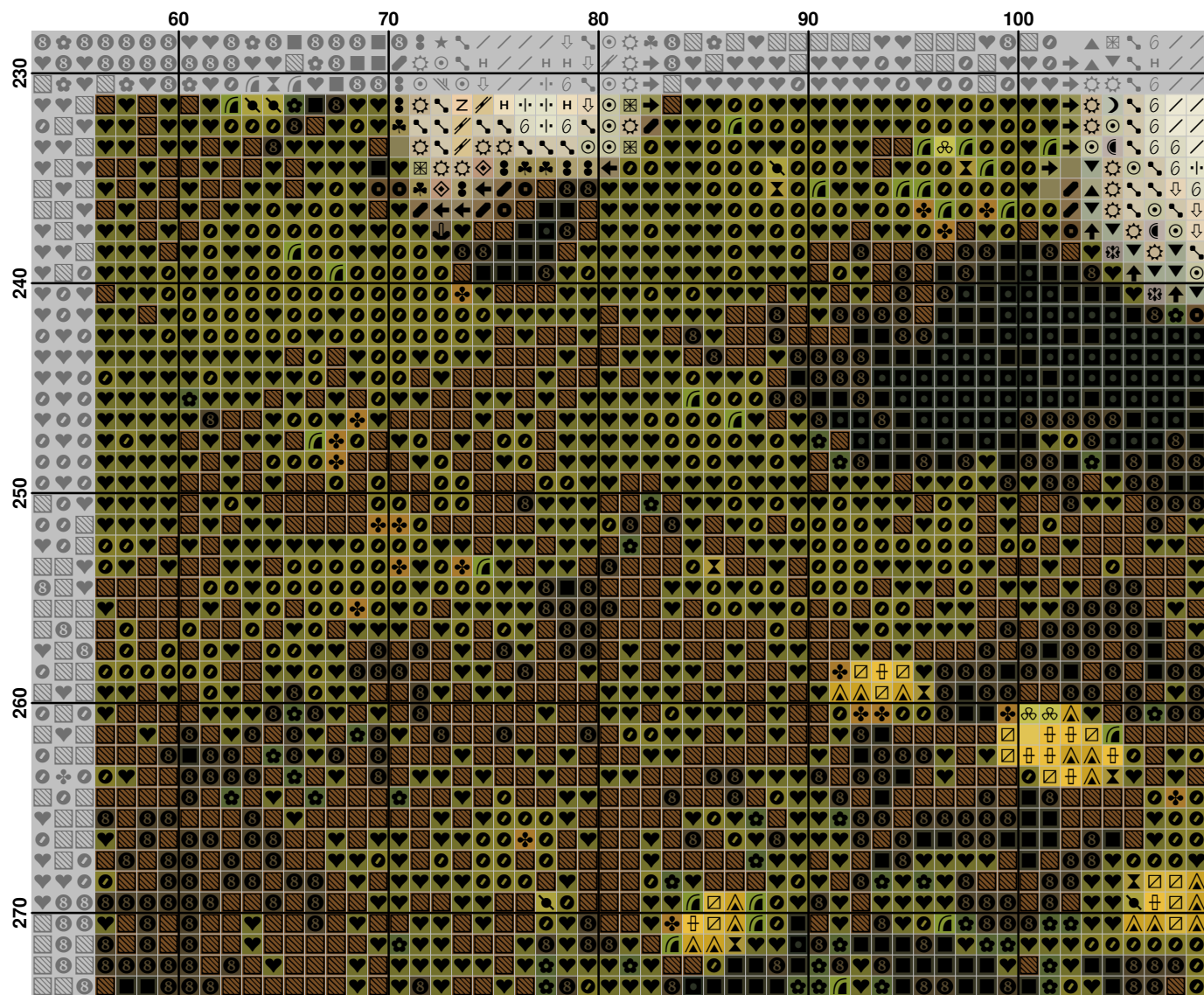


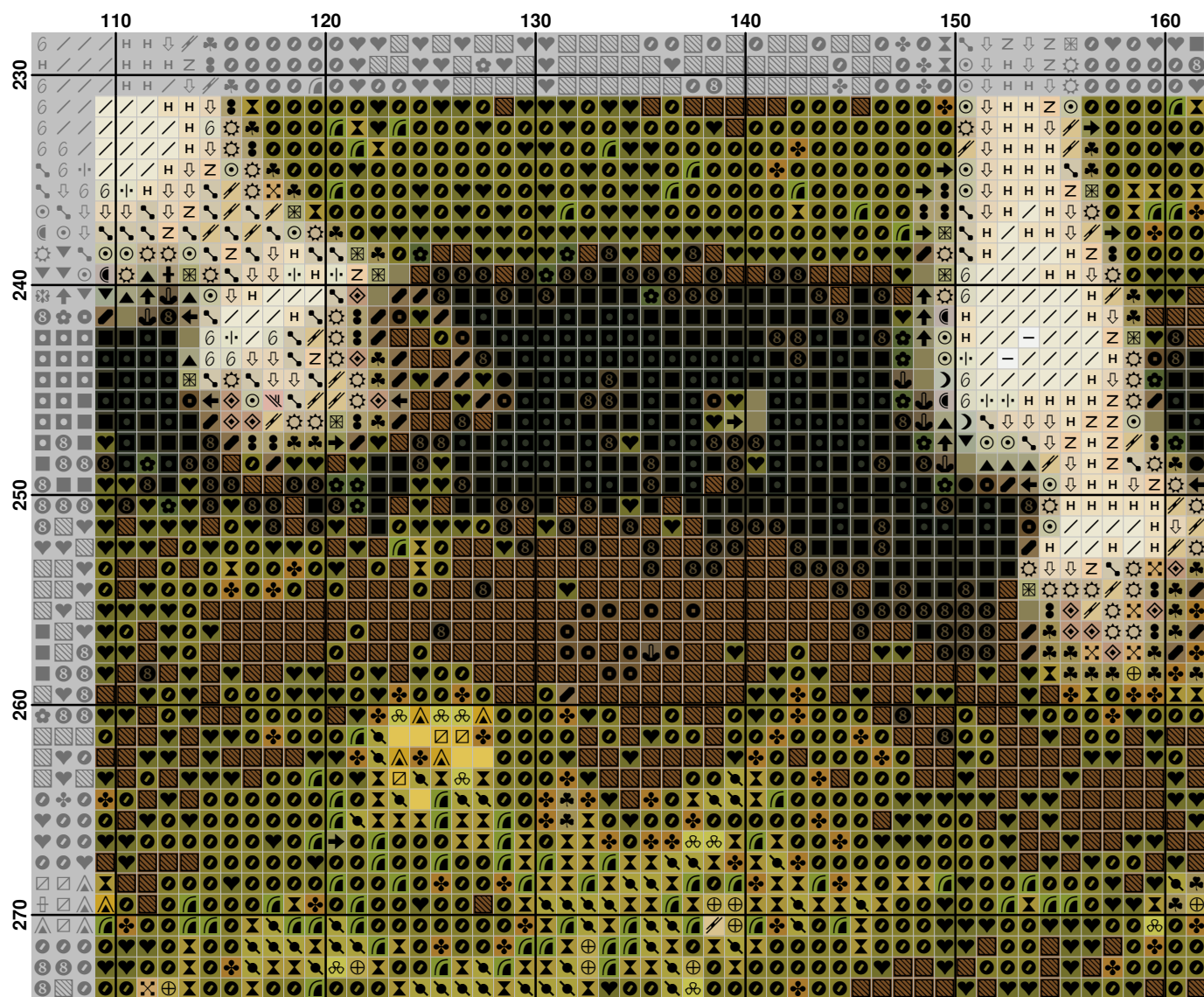


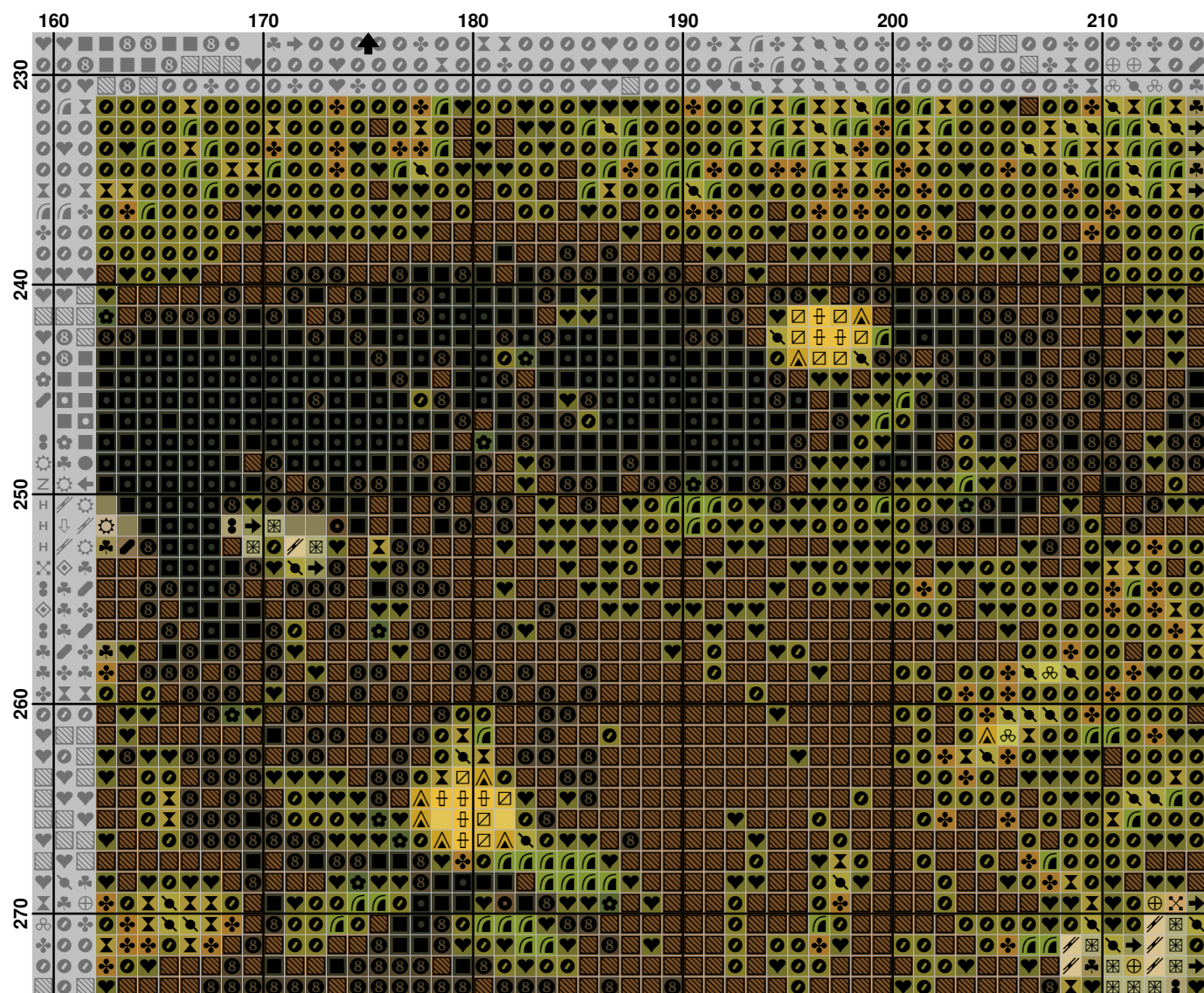


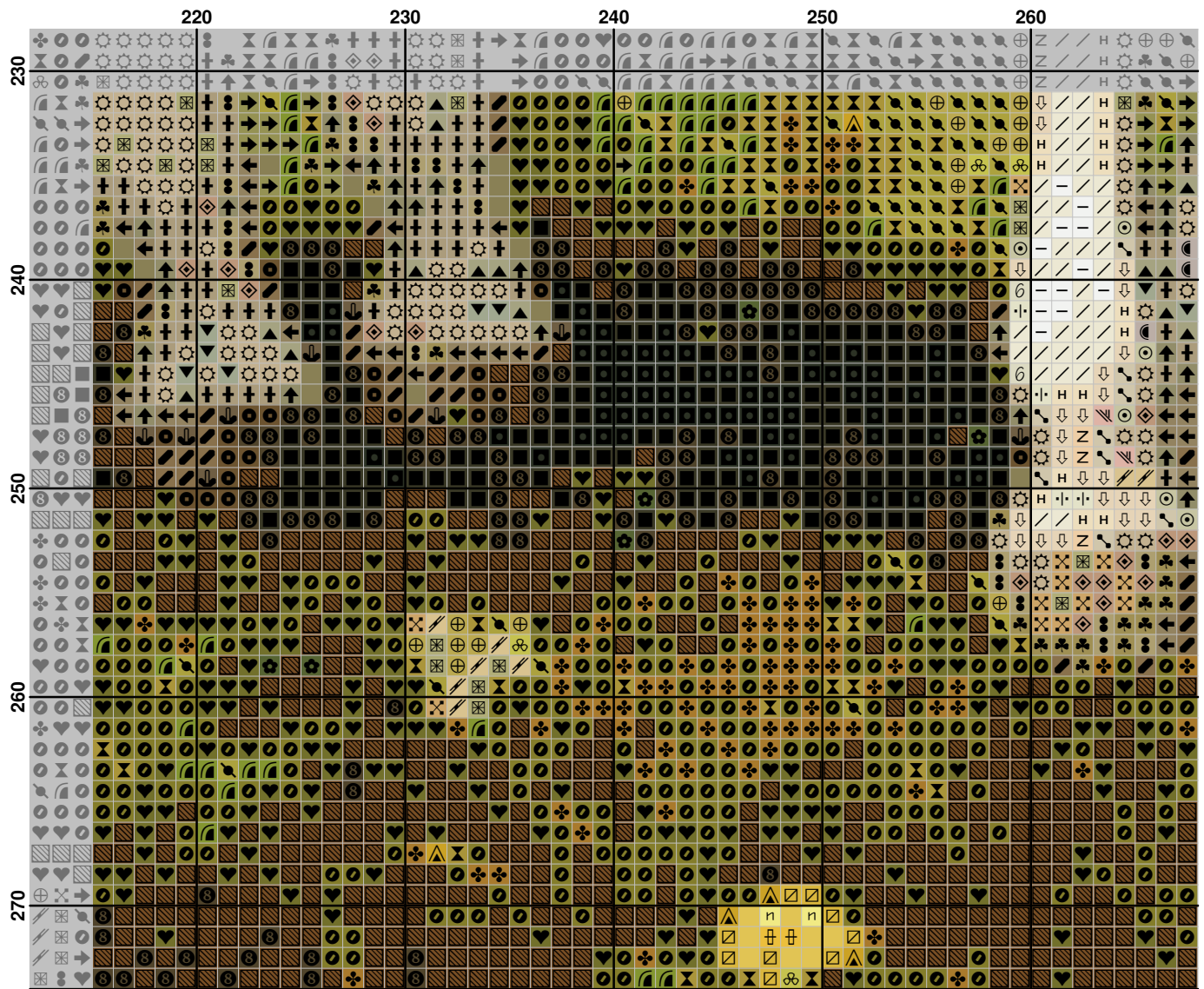


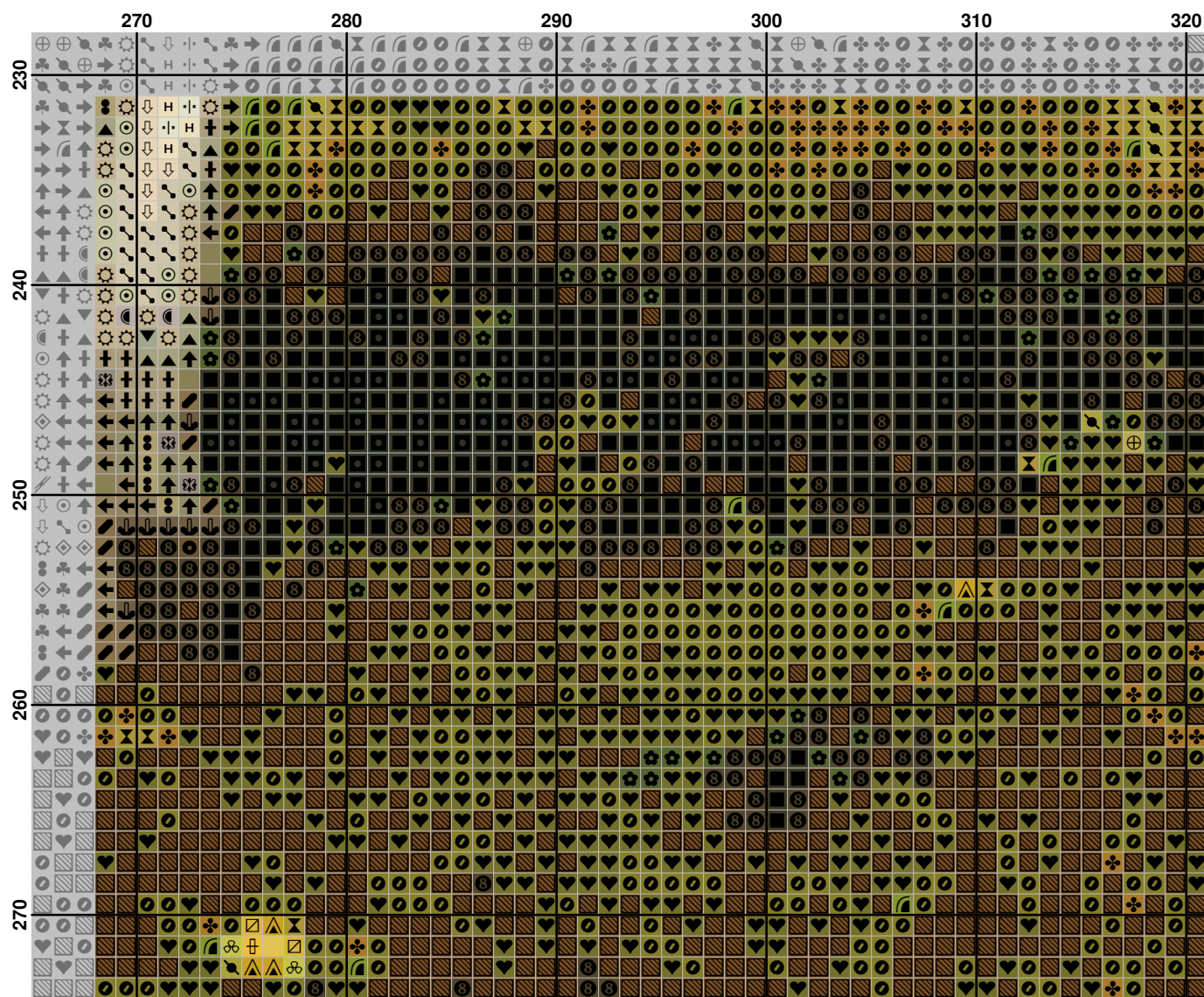


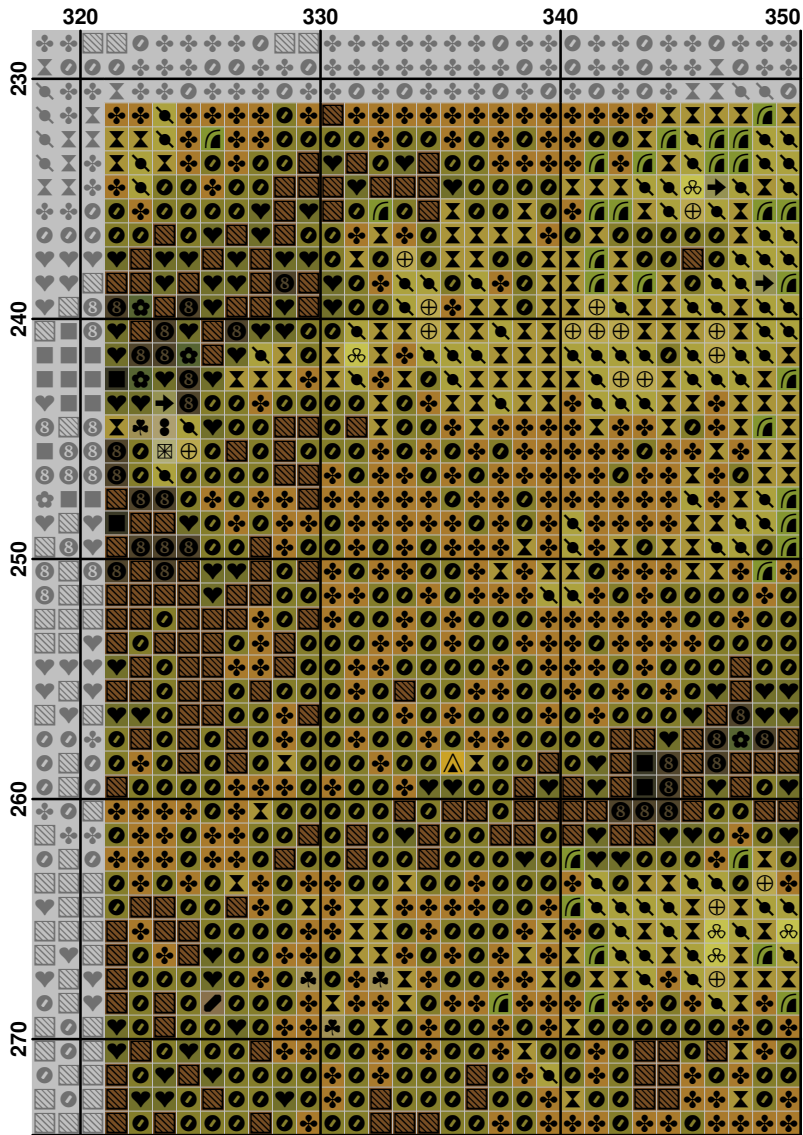







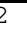













**Pattern Name:** HAERS022 Unicorn Love  
**Designed By:** Ruth Sanderson  
**Copyright:** перенабор svmur51  
**Fabric:** Aida 14, White  
 350w X 274h Stitches  
**Size:** 14 Count, 63.50w X 49.71h cm

**Floss Used for Full Stitches:**

Symbol	Strands	Type	Number	Color
	2	DMC	224	Shell Pink-VY LT
	2	DMC	300	Mahogany-VY DK
	2	DMC	310	Black
	2	DMC	370	Mustard-MD
	2	DMC	372	Mustard-LT
	2	DMC	407	Desert Sand-DK
	2	DMC	436	Tan
	2	DMC	451	Shell Gray-DK
	2	DMC	452	Shell Gray-MD
	2	DMC	581	Moss Green
	2	DMC	611	Drab Brown
	2	DMC	612	Drab Brown-LT
	2	DMC	613	Drab Brown-VY LT
	2	DMC	640	Beige Gray-DK
	2	DMC	642	Beige Gray-DK MD
	2	DMC	647	Beaver Gray-MD
	2	DMC	648	Beaver Gray-LT
	2	DMC	727	Topaz-VY LT
	2	DMC	728	Topaz
	2	DMC	730	Olive Green-VY DK
	2	DMC	732	Olive Green
	2	DMC	733	Olive Green-MD
	2	DMC	738	Tan-VY LT
	2	DMC	758	Terra Cotta-VY LT
	2	DMC	781	Topaz-VY DK
	2	DMC	801	Coffee Brown-DK
	2	DMC	822	Beige Gray-LT
	2	DMC	832	Golden Olive
	2	DMC	833	Golden Olive-LT
	2	DMC	839	Beige Brown-DK
	2	DMC	840	Beige Brown-MD
	2	DMC	841	Beige Brown-LT
	2	DMC	842	Beige Brown-VY LT
	2	DMC	936	Avocado Green-DK MD
	2	DMC	938	Coffee Brown-UL DK
	2	DMC	945	Tawny
	2	DMC	951	Tawny-LT
	2	DMC	3012	Khaki Green-MD
	2	DMC	3031	Mocha Brown-VY DK
	2	DMC	3033	Mocha Brown-VY LT
	2	DMC	3371	Black Brown
	2	DMC	3770	Tawny-VY LT
	2	DMC	3774	Desert Sand-VY LT
	2	DMC	3819	Moss Green-LT
	2	DMC	3820	Straw-DK
	2	DMC	3821	Straw
	2	DMC	3852	Straw-VY DK
	2	DMC	3862	Mocha Beige-DK
	2	DMC	3864	Mocha Beige-LT
	2	K BF	032	Pearl

## Расход нитей

Нитей в мотке: 6

Длина мотка: 795.0 cm

Type	Number	Full	Half	Quarter	Petite	Back(cm)	Str(cm)	Spec(cm)	French	Bead	Skein Est.
DMC	224	1217	0	0	0	0.0	0.0	0.0	0	0	1.000
DMC	300	5495	0	0	0	0.0	0.0	0.0	0	0	3.000
DMC	310	1535	0	0	0	0.0	0.0	0.0	0	0	1.000
DMC	370	728	0	0	0	0.0	0.0	0.0	0	0	1.000
DMC	372	741	0	0	0	0.0	0.0	0.0	0	0	1.000
DMC	407	4612	0	0	0	0.0	0.0	0.0	0	0	2.000
DMC	436	143	0	0	0	0.0	0.0	0.0	0	0	1.000
DMC	451	1503	0	0	0	0.0	0.0	0.0	0	0	1.000
DMC	452	980	0	0	0	0.0	0.0	0.0	0	0	1.000
DMC	581	1785	0	0	0	0.0	0.0	0.0	0	0	1.000
DMC	611	389	0	0	0	0.0	0.0	0.0	0	0	1.000
DMC	612	1528	0	0	0	0.0	0.0	0.0	0	0	1.000
DMC	613	2489	0	0	0	0.0	0.0	0.0	0	0	2.000
DMC	640	1078	0	0	0	0.0	0.0	0.0	0	0	1.000
DMC	642	647	0	0	0	0.0	0.0	0.0	0	0	1.000
DMC	647	634	0	0	0	0.0	0.0	0.0	0	0	1.000
DMC	648	313	0	0	0	0.0	0.0	0.0	0	0	1.000
DMC	727	6	0	0	0	0.0	0.0	0.0	0	0	1.000
DMC	728	52	0	0	0	0.0	0.0	0.0	0	0	1.000
DMC	730	4779	0	0	0	0.0	0.0	0.0	0	0	3.000
DMC	732	5799	0	0	0	0.0	0.0	0.0	0	0	3.000
DMC	733	2118	0	0	0	0.0	0.0	0.0	0	0	1.000
DMC	738	1142	0	0	0	0.0	0.0	0.0	0	0	1.000
DMC	758	207	0	0	0	0.0	0.0	0.0	0	0	1.000
DMC	781	1715	0	0	0	0.0	0.0	0.0	0	0	1.000
DMC	801	753	0	0	0	0.0	0.0	0.0	0	0	1.000
DMC	822	623	0	0	0	0.0	0.0	0.0	0	0	1.000
DMC	832	2228	0	0	0	0.0	0.0	0.0	0	0	1.000
DMC	833	551	0	0	0	0.0	0.0	0.0	0	0	1.000
DMC	839	1402	0	0	0	0.0	0.0	0.0	0	0	1.000
DMC	840	4003	0	0	0	0.0	0.0	0.0	0	0	2.000
DMC	841	3645	0	0	0	0.0	0.0	0.0	0	0	2.000
DMC	842	5134	0	0	0	0.0	0.0	0.0	0	0	3.000
DMC	936	560	0	0	0	0.0	0.0	0.0	0	0	1.000
DMC	938	3057	0	0	0	0.0	0.0	0.0	0	0	2.000
DMC	945	1667	0	0	0	0.0	0.0	0.0	0	0	1.000
DMC	951	2857	0	0	0	0.0	0.0	0.0	0	0	2.000
DMC	3012	258	0	0	0	0.0	0.0	0.0	0	0	1.000
DMC	3031	121	0	0	0	0.0	0.0	0.0	0	0	1.000
DMC	3033	736	0	0	0	0.0	0.0	0.0	0	0	1.000
DMC	3371	2067	0	0	0	0.0	0.0	0.0	0	0	1.000
DMC	3770	7042	0	0	0	0.0	0.0	0.0	0	0	3.000
DMC	3774	2682	0	0	0	0.0	0.0	0.0	0	0	2.000
DMC	3819	471	0	0	0	0.0	0.0	0.0	0	0	1.000
DMC	3820	84	0	0	0	0.0	0.0	0.0	0	0	1.000
DMC	3821	45	0	0	0	0.0	0.0	0.0	0	0	1.000
DMC	3852	130	0	0	0	0.0	0.0	0.0	0	0	1.000
DMC	3862	3721	0	0	0	0.0	0.0	0.0	0	0	2.000
DMC	3864	7697	0	0	0	0.0	0.0	0.0	0	0	4.000
K BF	032	2731	0	0	0	0.0	0.0	0.0	0	0	2.000