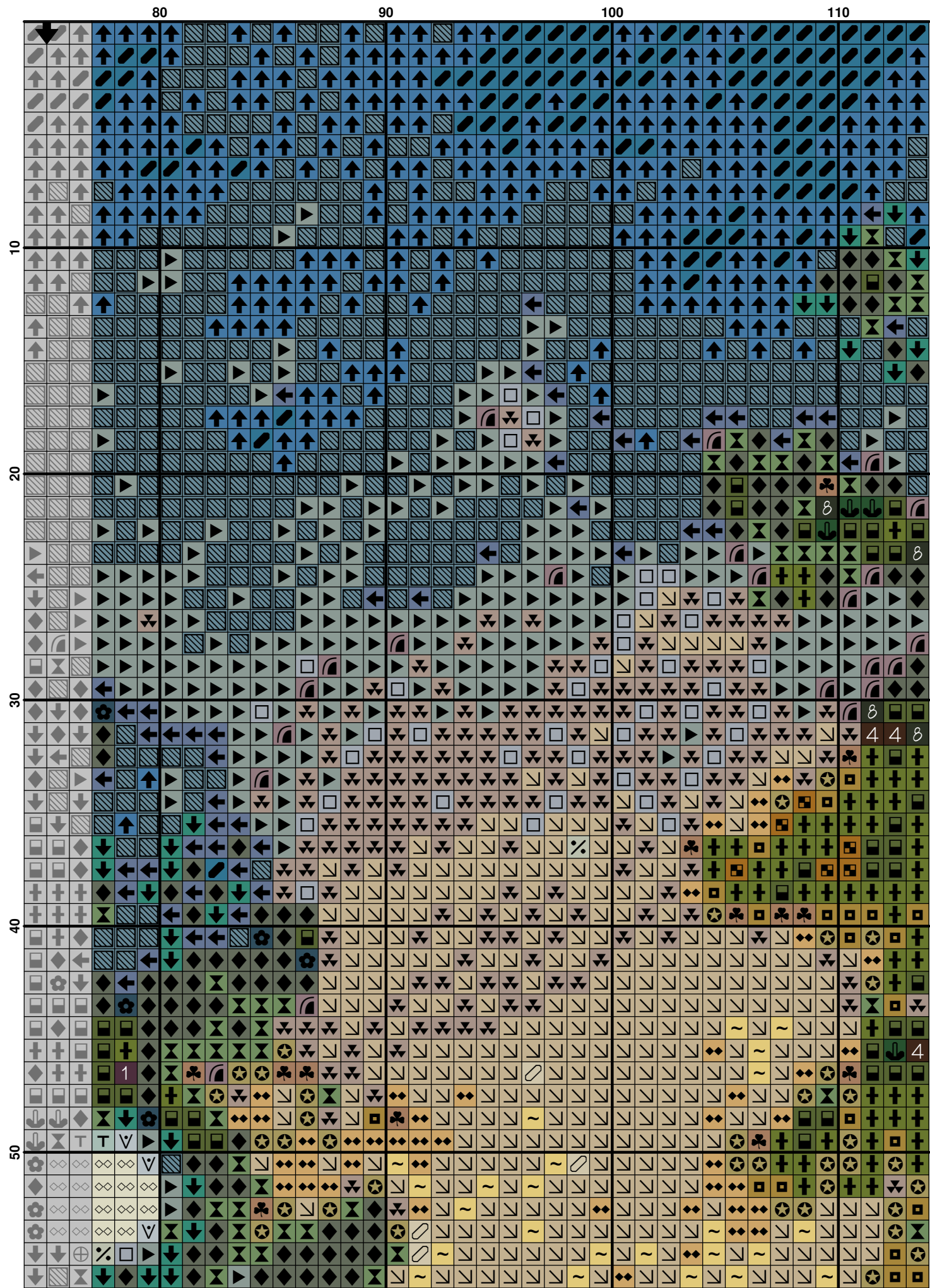
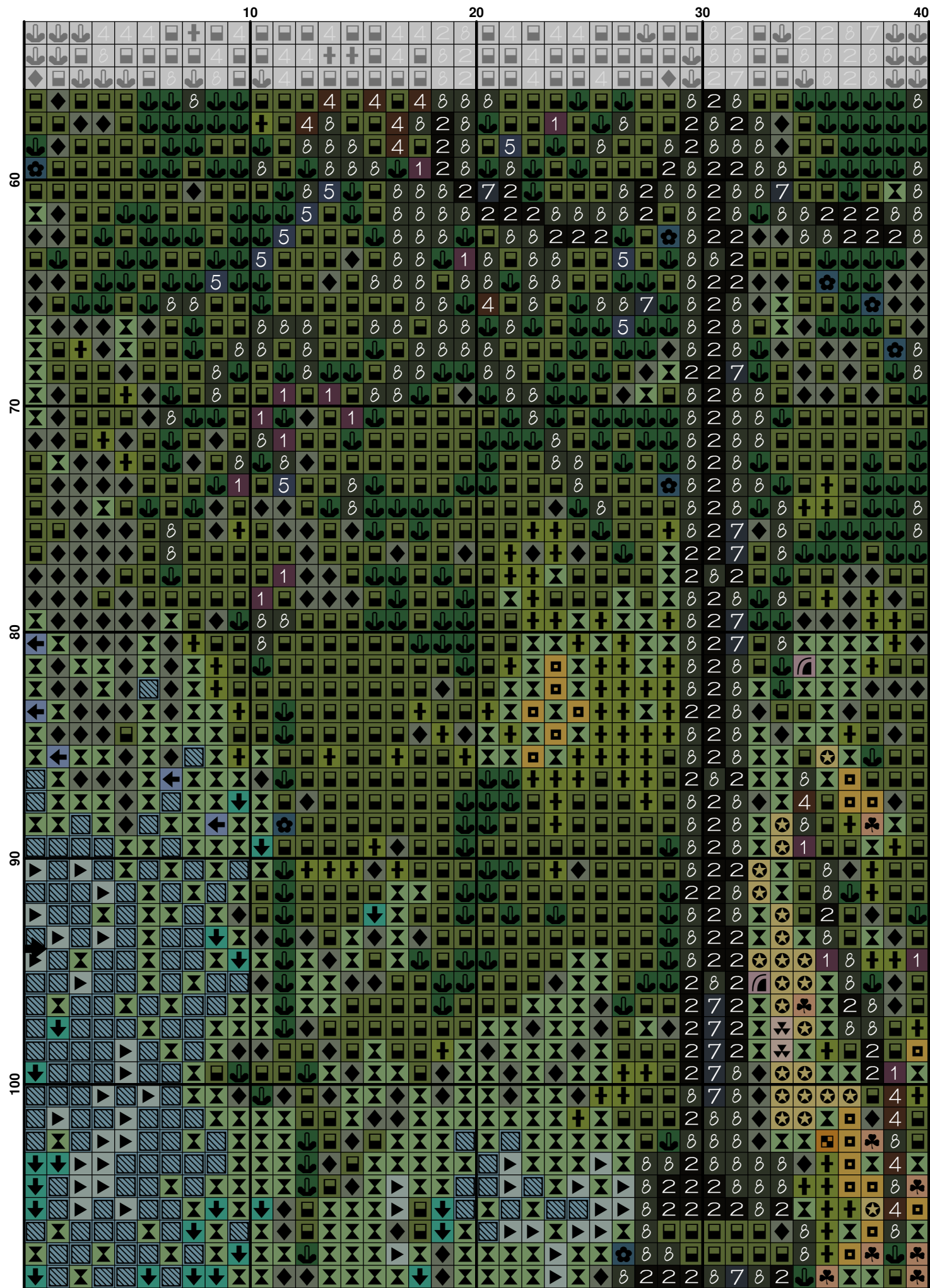




(7)



[illegible]



[illegible]

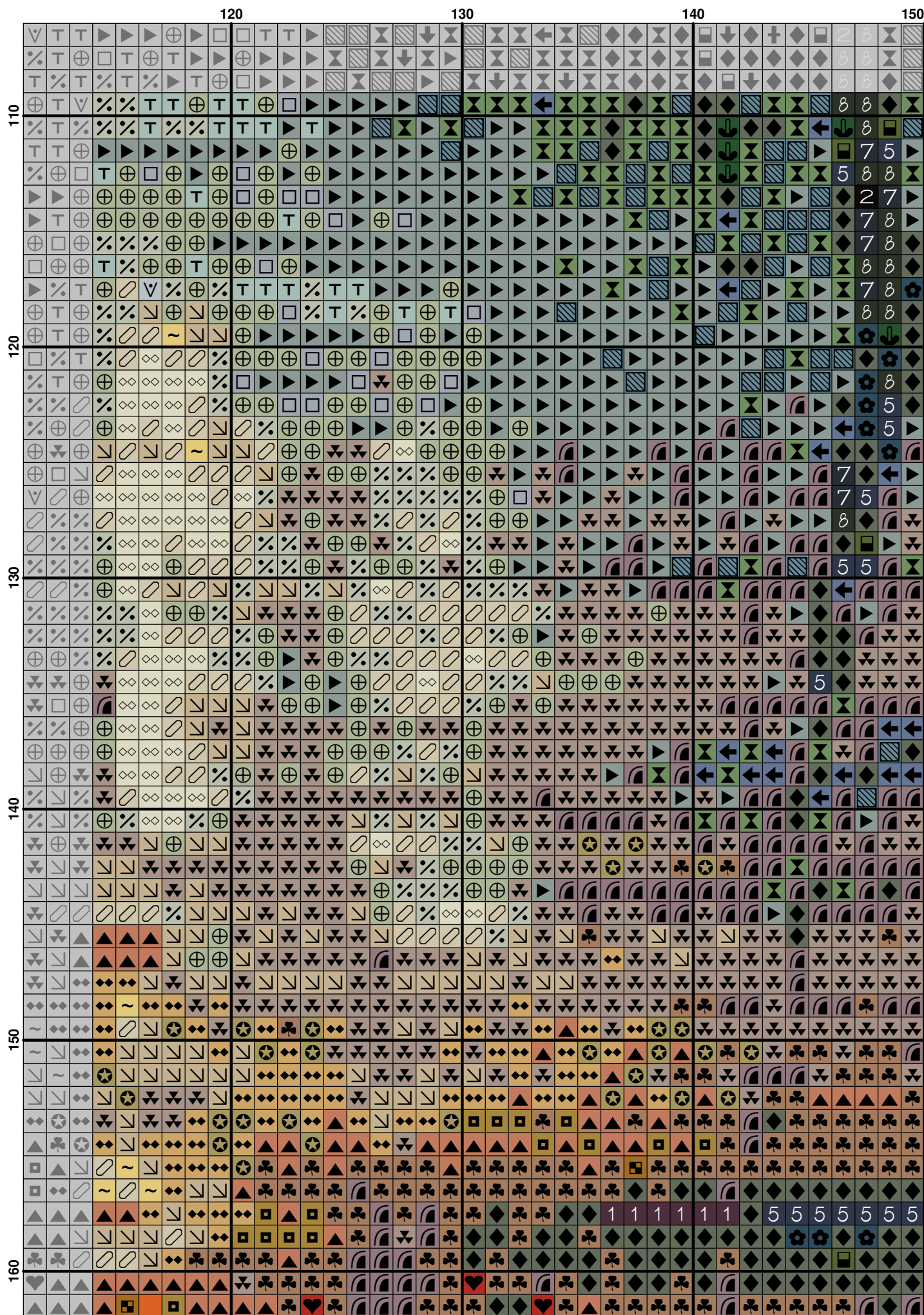
[illegible]

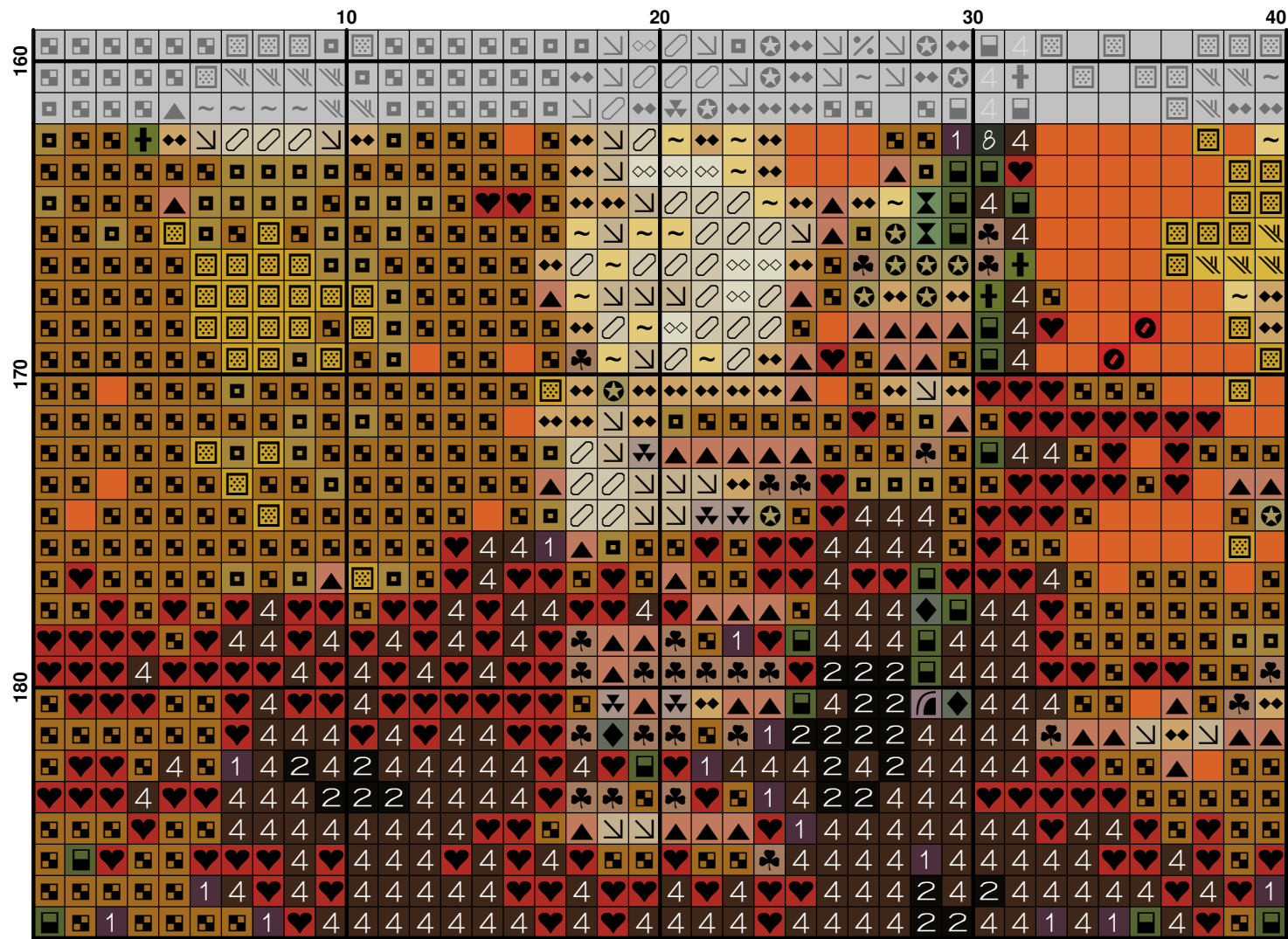
[illegible]

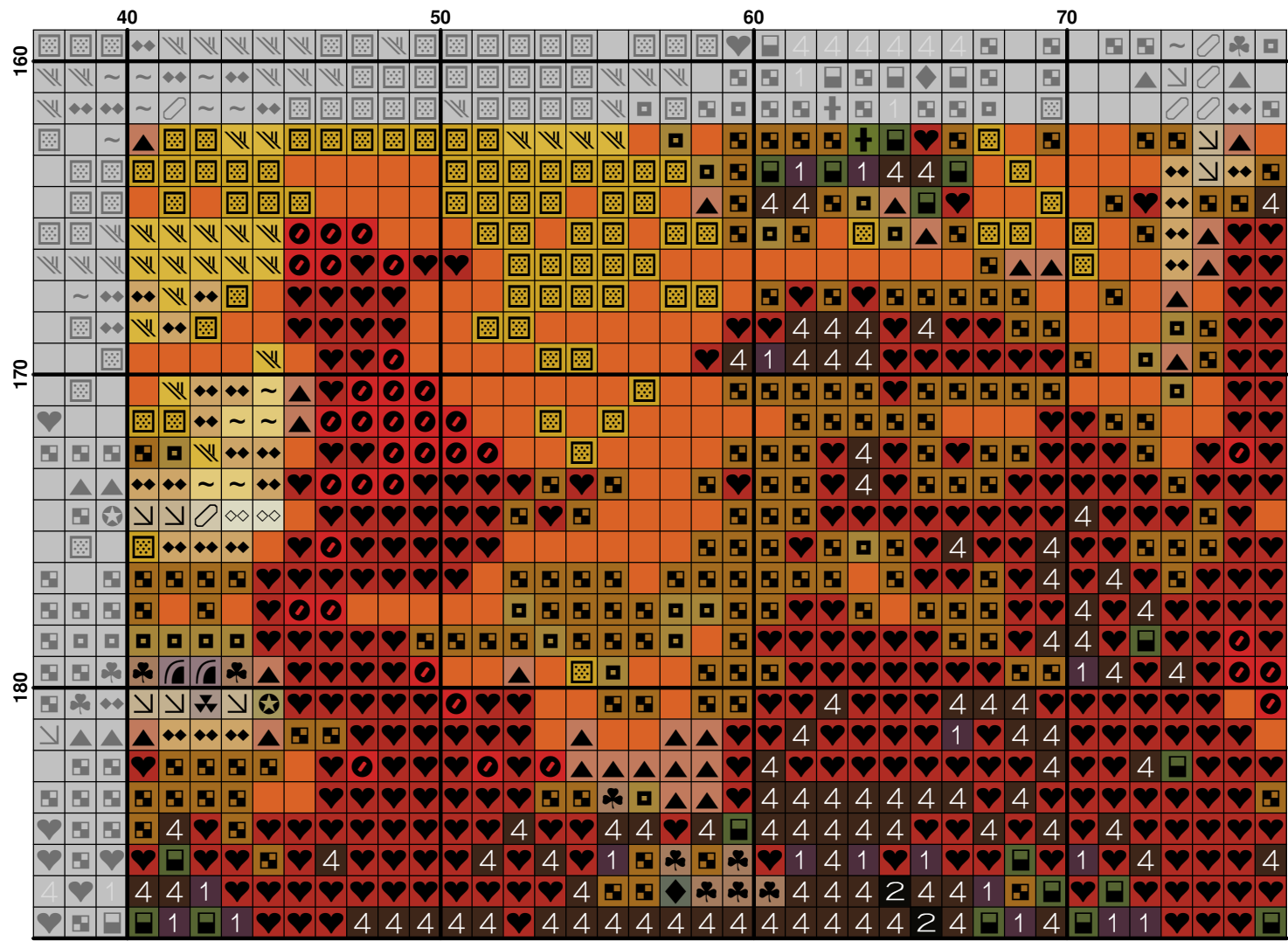
(14)

	40	50	60	70
110				
120				
130				
140				
150				
160				

[illegible]







	80																90																100																110															
160																																																																

[illegible]

Fabric: Aida 18, White
150w X 188h Stitches
Size: 18 Count, 21.17w X 26.53h cm

Floss Used for Full Stitches:

Symbol	Strands	Type	Number	Color
	2	DMC	154	Grape-VY DK
	2	DMC	161	Gray Blue
	2	DMC	169	Pewter-LT
	2	DMC	310	Black
	2	DMC	318	Steel Gray-LT
	2	DMC	356	Terra Cotta-MD
	2	DMC	371	Mustard
	2	DMC	415	Pearl Gray
	2	DMC	436	Tan
	2	DMC	517	Wedgewood-DK
	2	DMC	524	Fern Green-VY LT
	2	DMC	535	Ash Gray-VY LT
	2	DMC	580	Moss Green-DK
	2	DMC	648	Beaver Gray-LT
	2	DMC	666	Christmas Red-BRT
	2	DMC	676	Old Gold-LT
	2	DMC	720	Orange Spice-DK
	2	DMC	817	Coral Red-VY DK
	2	DMC	823	Navy Blue-DK
	2	DMC	842	Beige Brown-VY LT
	2	DMC	890	Pistachio Green-UL DK
	2	DMC	927	Gray Green-LT
	2	DMC	931	Antique Blue-MD
	2	DMC	936	Avocado Green-VY DK
	2	DMC	939	Navy Blue-VY DK
	2	DMC	3033	Mocha Brown-VY LT
	2	DMC	3041	Antique Violet-MD
	2	DMC	3363	Pine Green-MD
	2	DMC	3750	Antique Blue-VY DK
	2	DMC	3765	Peacock Blue-VY DK
	2	DMC	3772	Desert Sand-VY DK
	2	DMC	3814	Aquamarine
	2	DMC	3820	Straw-DK
	2	DMC	3829	Old Gold-VY DK
	2	DMC	3852	Straw-VY DK
	2	DMC	3861	Cocoa-LT
	2	DMC	3864	Mocha Beige-LT
	2	DMC	420a	Hazelnut Brown - Dark
	2	DMC	black	Sharon mohair
	2	DMC	3371 mid	Black Broun

Usage Summary**Strands Per Skein:** 6**Skein Length:** 795.0 cm

Type	Number	Full	Half	Quarter	Petite	Back(cm)	Str(cm)	Spec(cm)	French	Bead	Skein Est.
DMC	154	229	0	0	0	0.0	0.0	0.0	0	0	1.000
DMC	161	214	0	0	0	0.0	0.0	0.0	0	0	1.000
DMC	169	1215	0	0	0	0.0	0.0	0.0	0	0	1.000
DMC	310	2516	0	0	0	0.0	0.0	0.0	0	0	1.000
DMC	318	246	0	0	0	0.0	0.0	0.0	0	0	1.000
DMC	356	271	0	0	0	0.0	0.0	0.0	0	0	1.000
DMC	371	853	0	0	0	0.0	0.0	0.0	0	0	1.000
DMC	415	193	0	0	0	0.0	0.0	0.0	0	0	1.000
DMC	436	698	0	0	0	0.0	0.0	0.0	0	0	1.000
DMC	517	402	0	0	0	0.0	0.0	0.0	0	0	1.000
DMC	524	633	0	0	0	0.0	0.0	0.0	0	0	1.000
DMC	535	1495	0	0	0	0.0	0.0	0.0	0	0	1.000
DMC	580	647	0	0	0	0.0	0.0	0.0	0	0	1.000
DMC	648	380	0	0	0	0.0	0.0	0.0	0	0	1.000
DMC	666	38	0	0	0	0.0	0.0	0.0	0	0	1.000
DMC	676	365	0	0	0	0.0	0.0	0.0	0	0	1.000
DMC	720	368	0	0	0	0.0	0.0	0.0	0	0	1.000
DMC	817	539	0	0	0	0.0	0.0	0.0	0	0	1.000
DMC	823	234	0	0	0	0.0	0.0	0.0	0	0	1.000
DMC	842	517	0	0	0	0.0	0.0	0.0	0	0	1.000
DMC	890	1399	0	0	0	0.0	0.0	0.0	0	0	1.000
DMC	927	176	0	0	0	0.0	0.0	0.0	0	0	1.000
DMC	931	1068	0	0	0	0.0	0.0	0.0	0	0	1.000
DMC	936	2155	0	0	0	0.0	0.0	0.0	0	0	1.000
DMC	939	645	0	0	0	0.0	0.0	0.0	0	0	1.000
DMC	3033	588	0	0	0	0.0	0.0	0.0	0	0	1.000
DMC	3041	419	0	0	0	0.0	0.0	0.0	0	0	1.000
DMC	3363	1502	0	0	0	0.0	0.0	0.0	0	0	1.000
DMC	3750	468	0	0	0	0.0	0.0	0.0	0	0	1.000
DMC	3765	247	0	0	0	0.0	0.0	0.0	0	0	1.000
DMC	3772	391	0	0	0	0.0	0.0	0.0	0	0	1.000
DMC	3814	426	0	0	0	0.0	0.0	0.0	0	0	1.000
DMC	3820	225	0	0	0	0.0	0.0	0.0	0	0	1.000
DMC	3829	485	0	0	0	0.0	0.0	0.0	0	0	1.000
DMC	3852	519	0	0	0	0.0	0.0	0.0	0	0	1.000
DMC	3861	900	0	0	0	0.0	0.0	0.0	0	0	1.000
DMC	3864	1078	0	0	0	0.0	0.0	0.0	0	0	1.000
DMC	420a	874	0	0	0	0.0	0.0	0.0	0	0	1.000
DMC	black	1491	0	0	0	0.0	0.0	0.0	0	0	1.000
DMC	3371 mid	1091	0	0	0	0.0	0.0	0.0	0	0	1.000