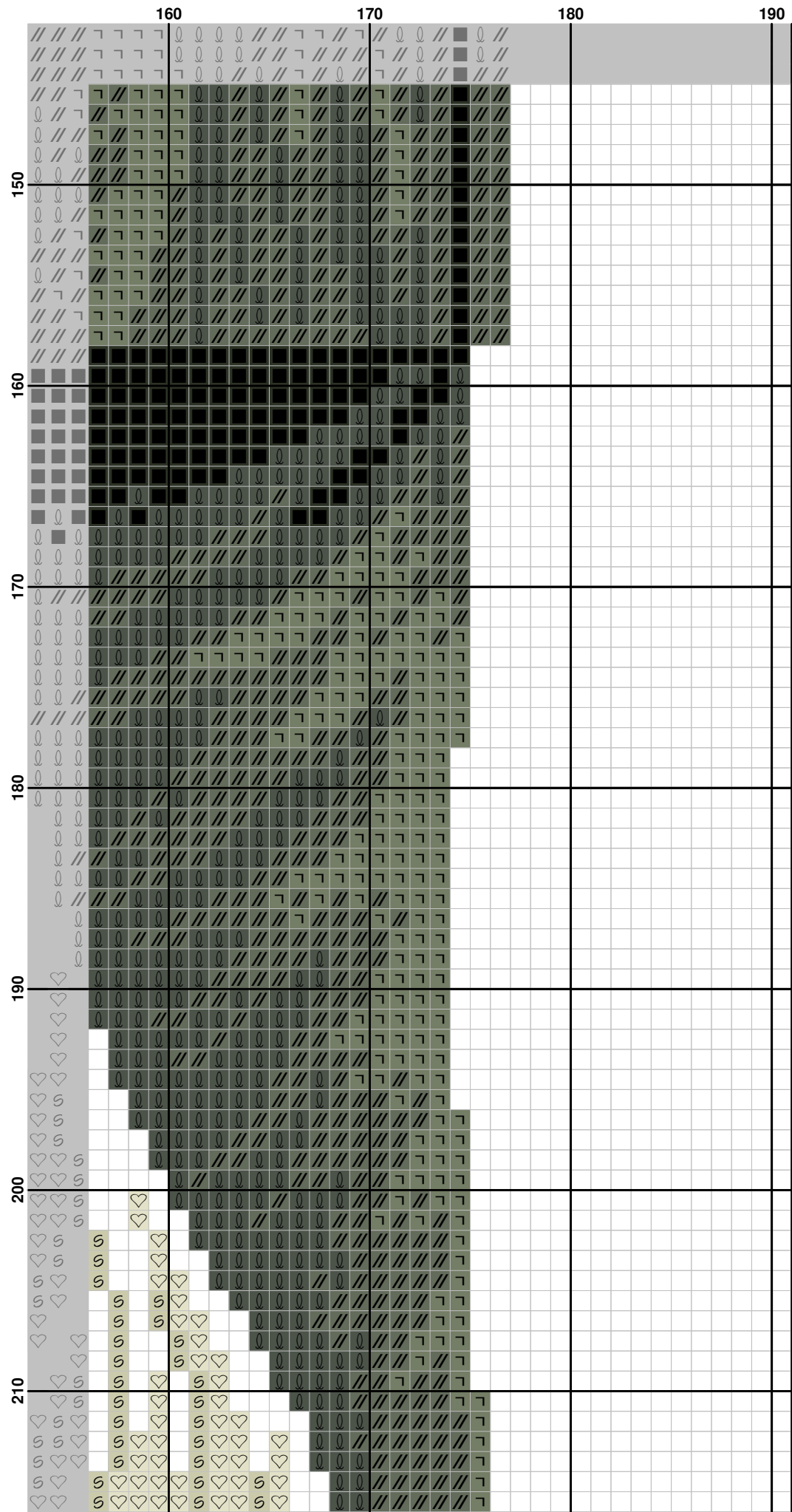
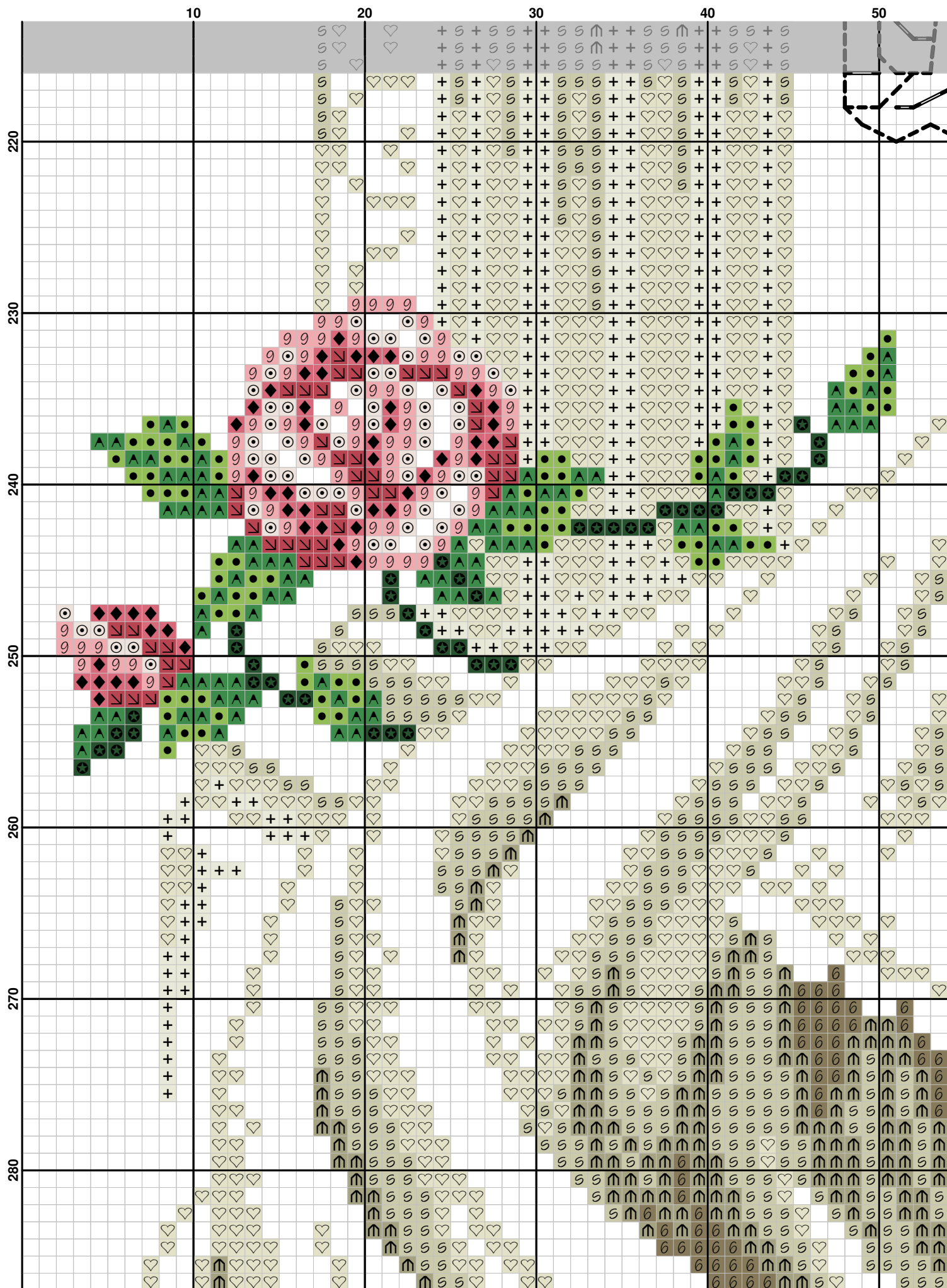
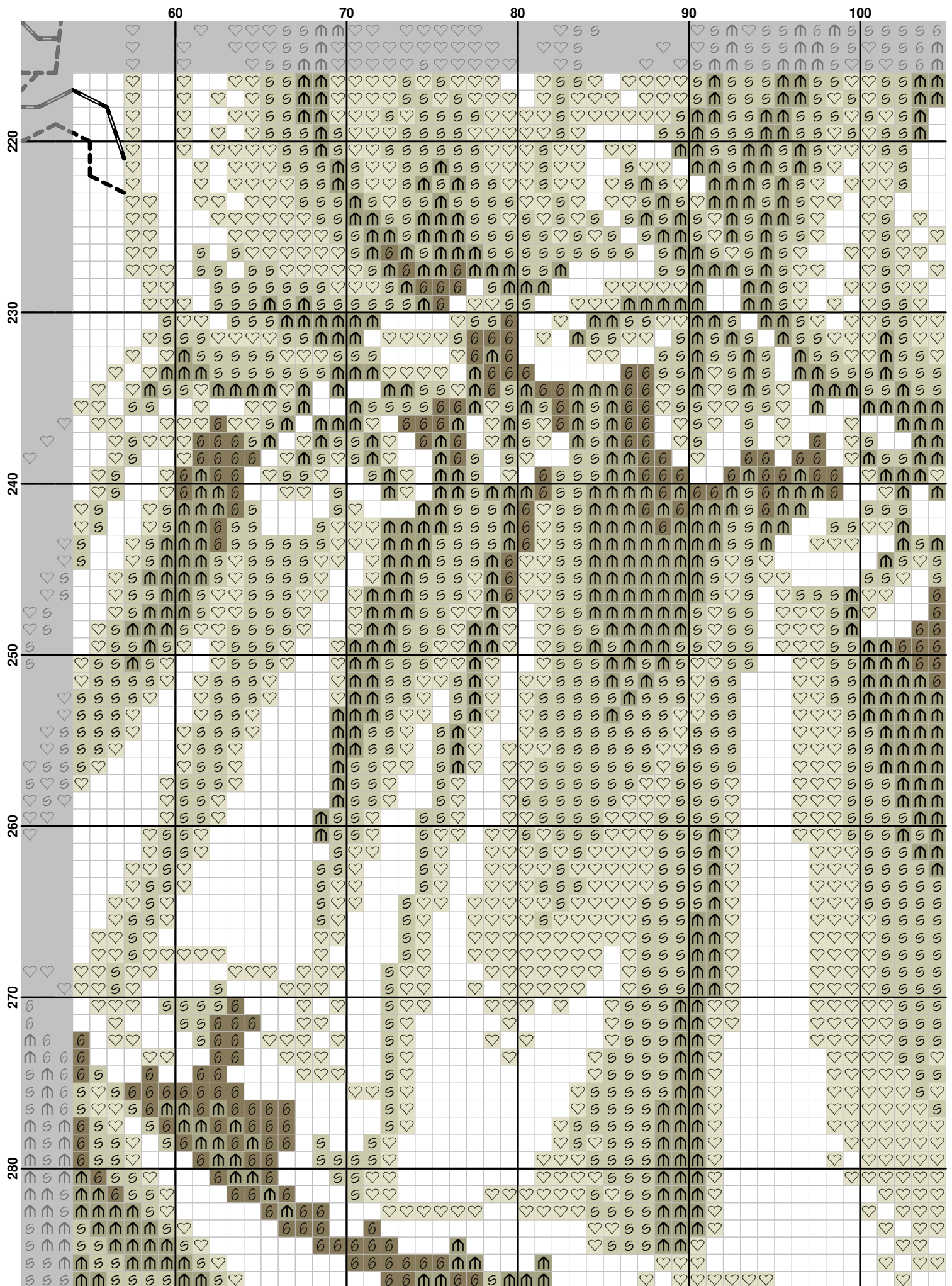
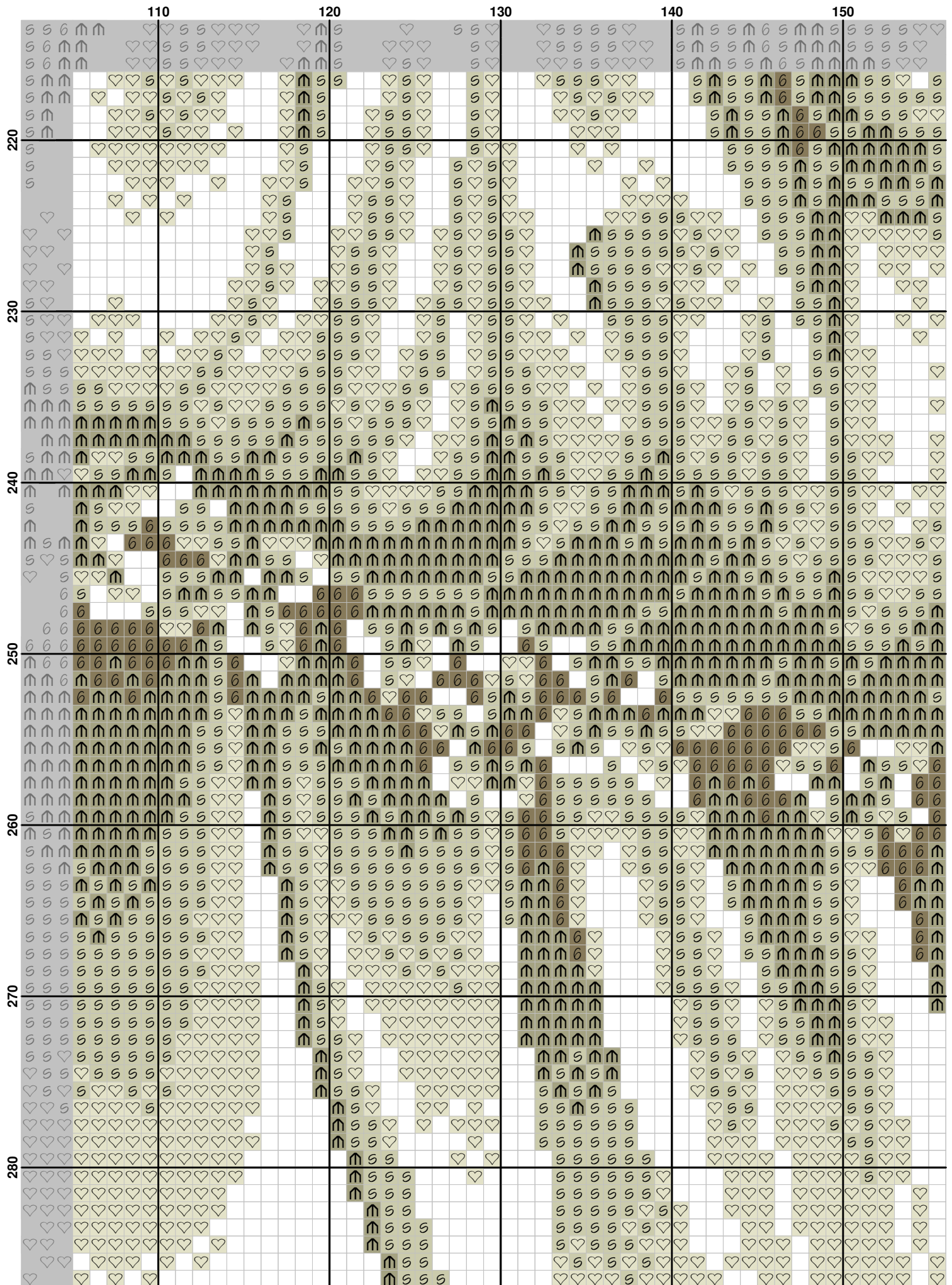


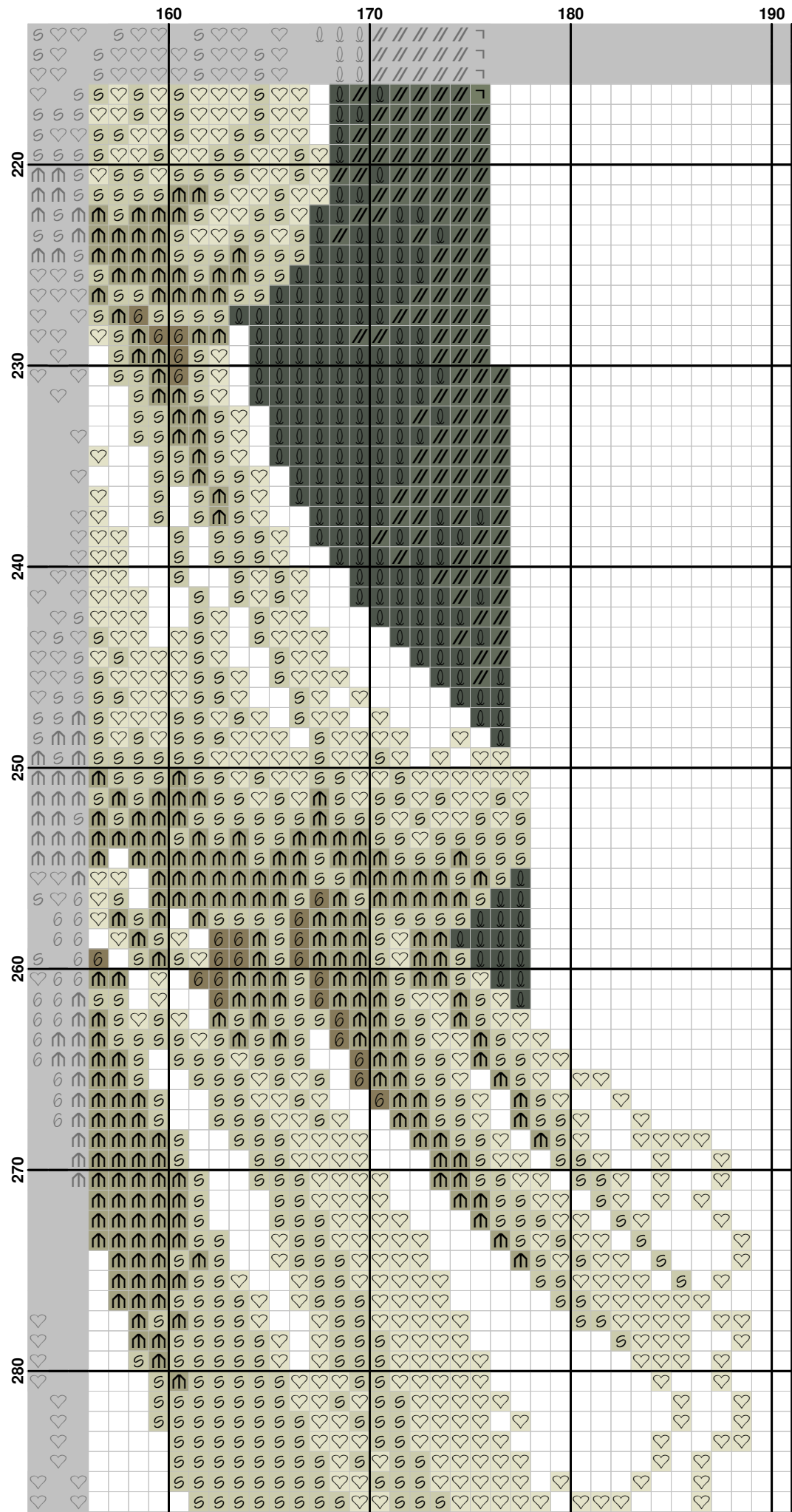
	110	120	130	140	150
150					
160					
170					
180					
190					
200					
210					

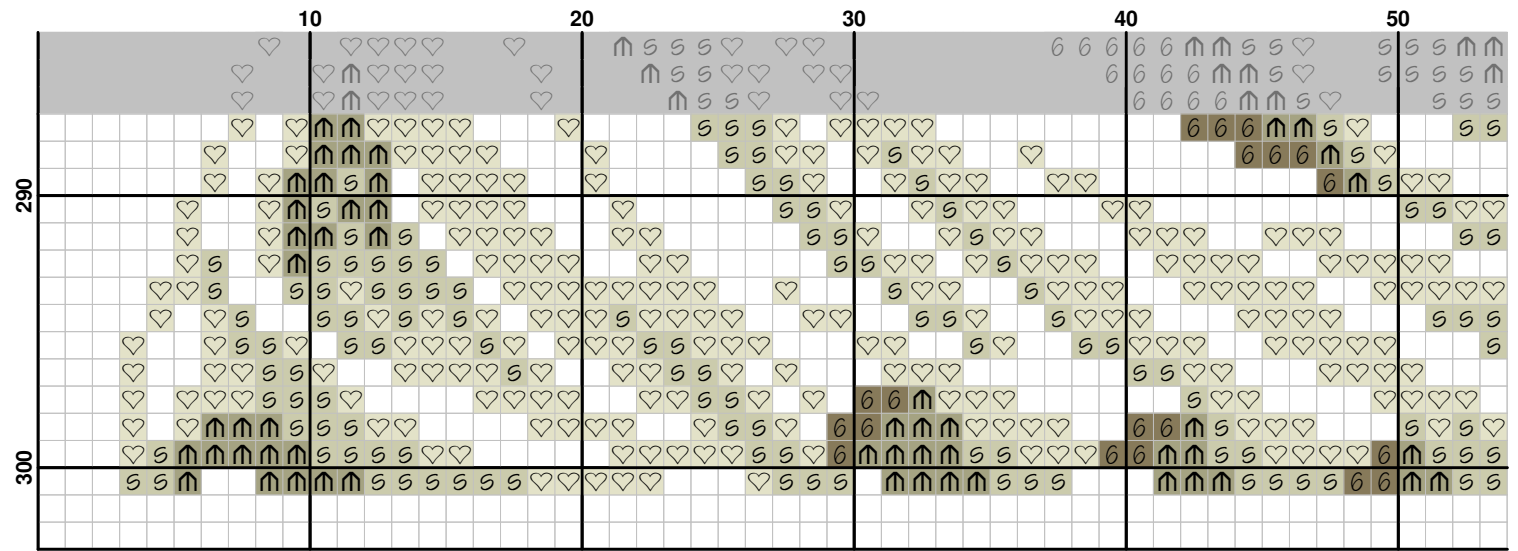


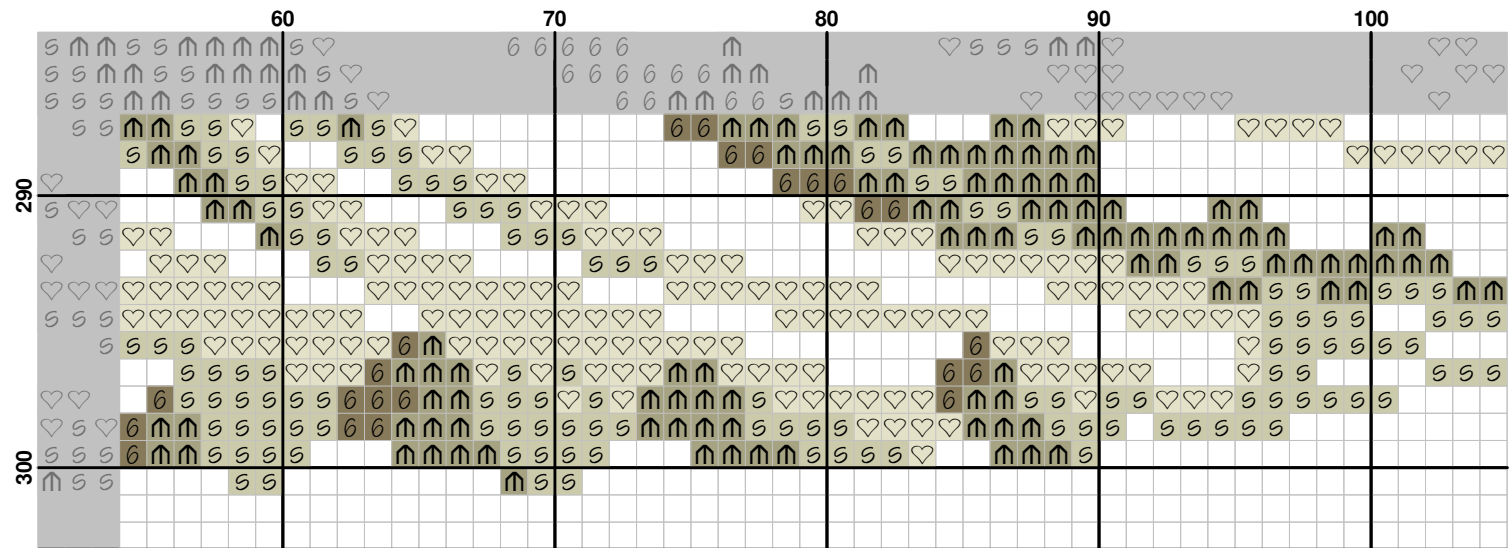


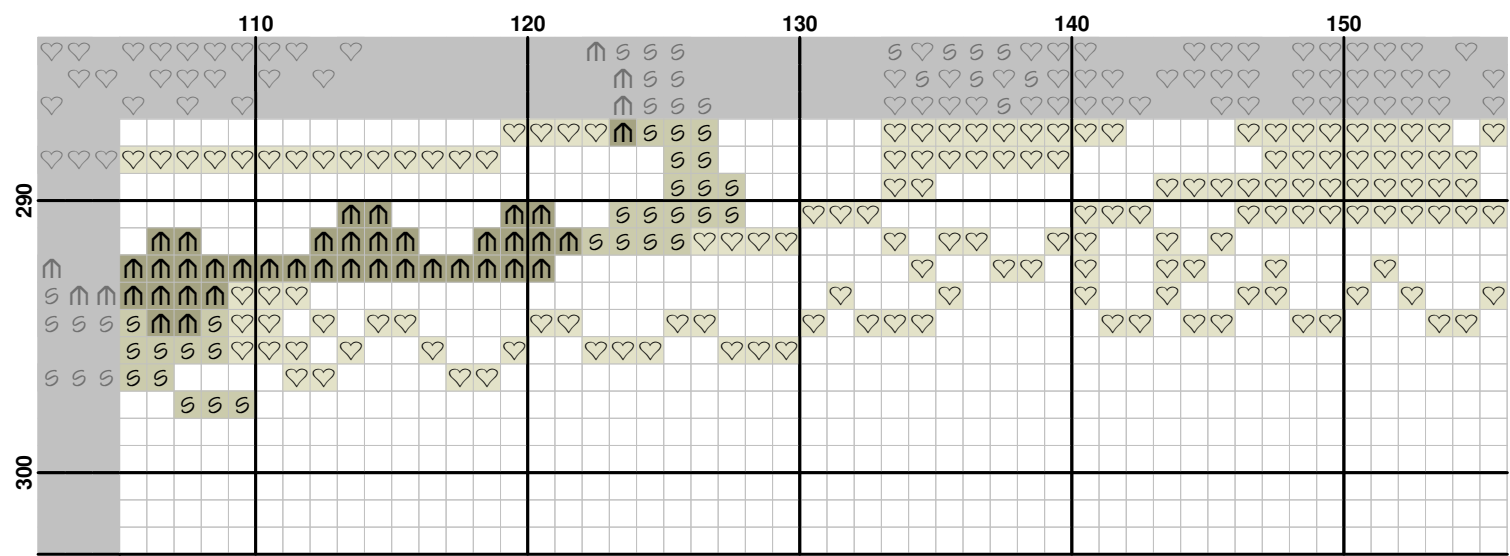





















[illegible]

Pattern Name: 111007
Company: Dome
Fabric: Aida 14, White
 187w X 299h Stitches
Size: 14 Count, 33.93w X 54.25h cm

Floss Used for Full Stitches:

Symbol	Strands	Type	Number	Color
	2	DMC	309	Geranium
	2	DMC	310	Black
	2	DMC	335	Rose
	2	DMC	352	Coral-LT
	2	DMC	369	Pistachio Green-VY LT
	2	DMC	370	Mustard-MD
	2	DMC	434	Brown-LT
	2	DMC	436	Tan
	2	DMC	437	Tan-LT
	2	DMC	535	Ash Gray-VY LT
	2	DMC	642	Beige Gray-DK MD
	2	DMC	644	Beige Gray-MD
	2	DMC	645	Beaver Gray-VY DK
	2	DMC	648	Beaver Gray-LT
	2	DMC	666	Christmas Red-BRT
	2	DMC	701	Christmas Green-MD
	2	DMC	704	Christmas Green-VY LT
	2	DMC	712	Cream
	2	DMC	739	Tan-UL VY LT
	2	DMC	742	Yellow-DK
	2	DMC	745	Yellow-LT Pale
	2	DMC	754	Peach-LT
	2	DMC	758	Terra Cotta-VY LT
	2	DMC	801	Coffee Brown-DK
	2	DMC	819	Baby Pink-LT
	2	DMC	822	Beige Gray-LT
	2	DMC	838	Beige Brown-VY DK
	2	DMC	840	Beige Brown-MD
	2	DMC	842	Beige Brown-VY LT
	2	DMC	890	Pistachio Green-UL DK
	2	DMC	945	Tawny
	2	DMC	951	Tawny-LT
	2	DMC	976	Golden Brown-MD
	2	DMC	3046	Yellow Beige-MD
	2	DMC	3326	Rose-LT
	2	DMC	3770	Tawny-VY LT
	2	DMC	3790	Beige Gray-UL DK
	2	DMC	3799	Pewter Gray-VY DK
	2	DMC	3823	Yellow-UL Pale
	2	DMC	3863	Mocha Beige-MD

Floss Used for Back Stitches:

Symbol	Strands	Type	Number	Color
	1	DMC	310	Black
	2	DMC	310	Black
	1	DMC	356	Terra Cotta-MD
	1	DMC	642	Beige Gray-DK MD
	2	DMC	642	Beige Gray-DK MD
	1	DMC	666	Christmas Red-BRT
	1	DMC	White	White
	2	DMC	White	White

