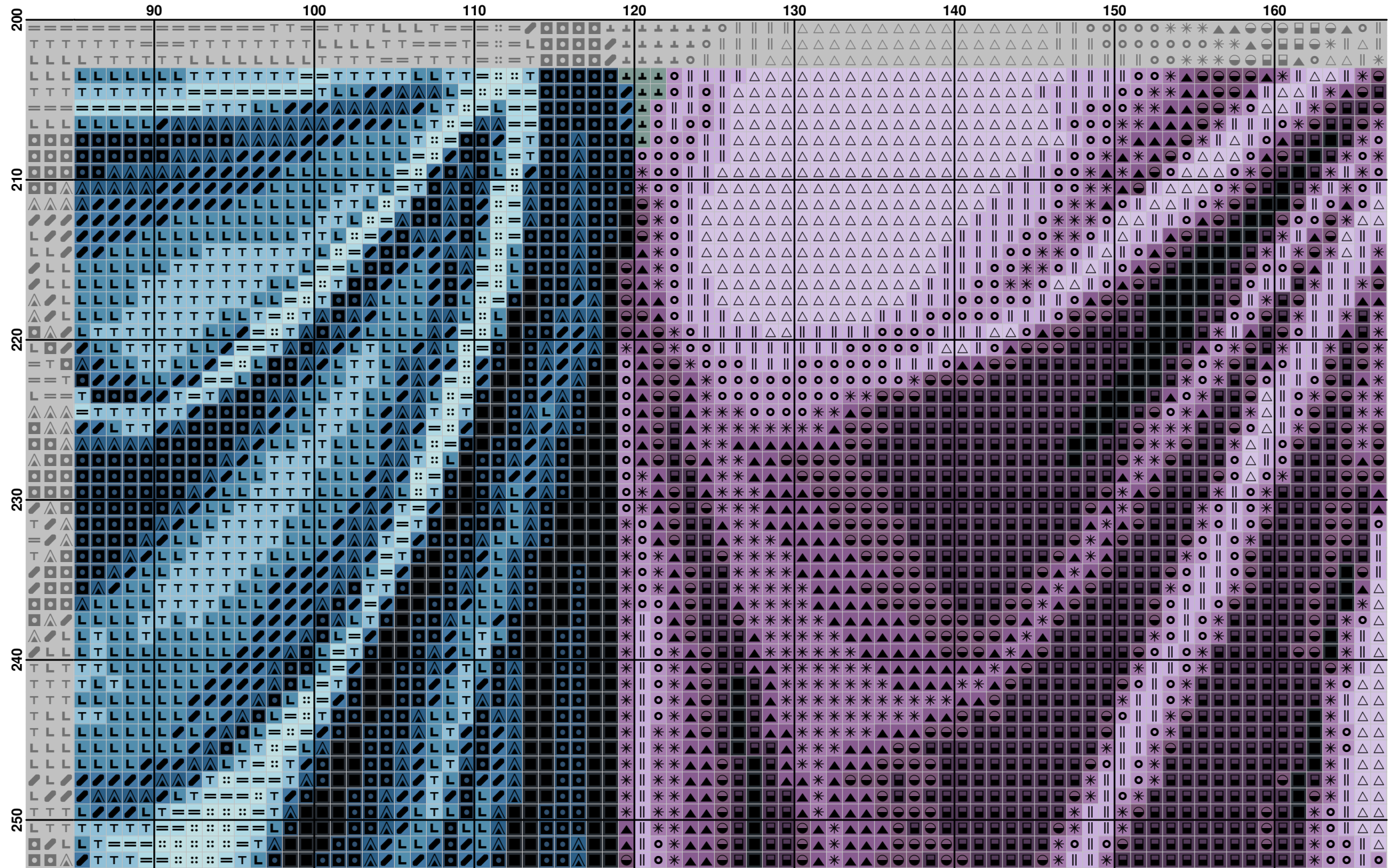
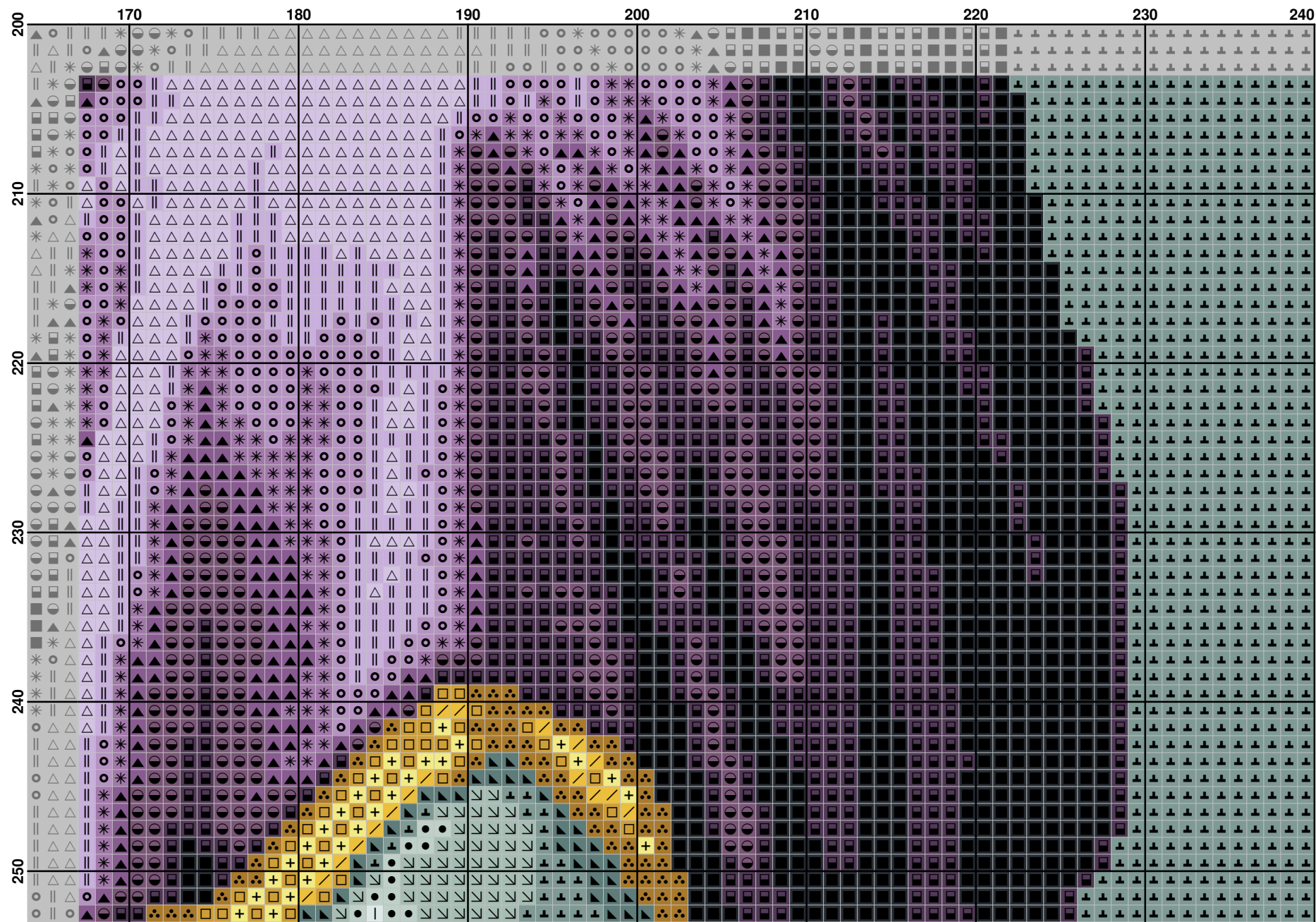
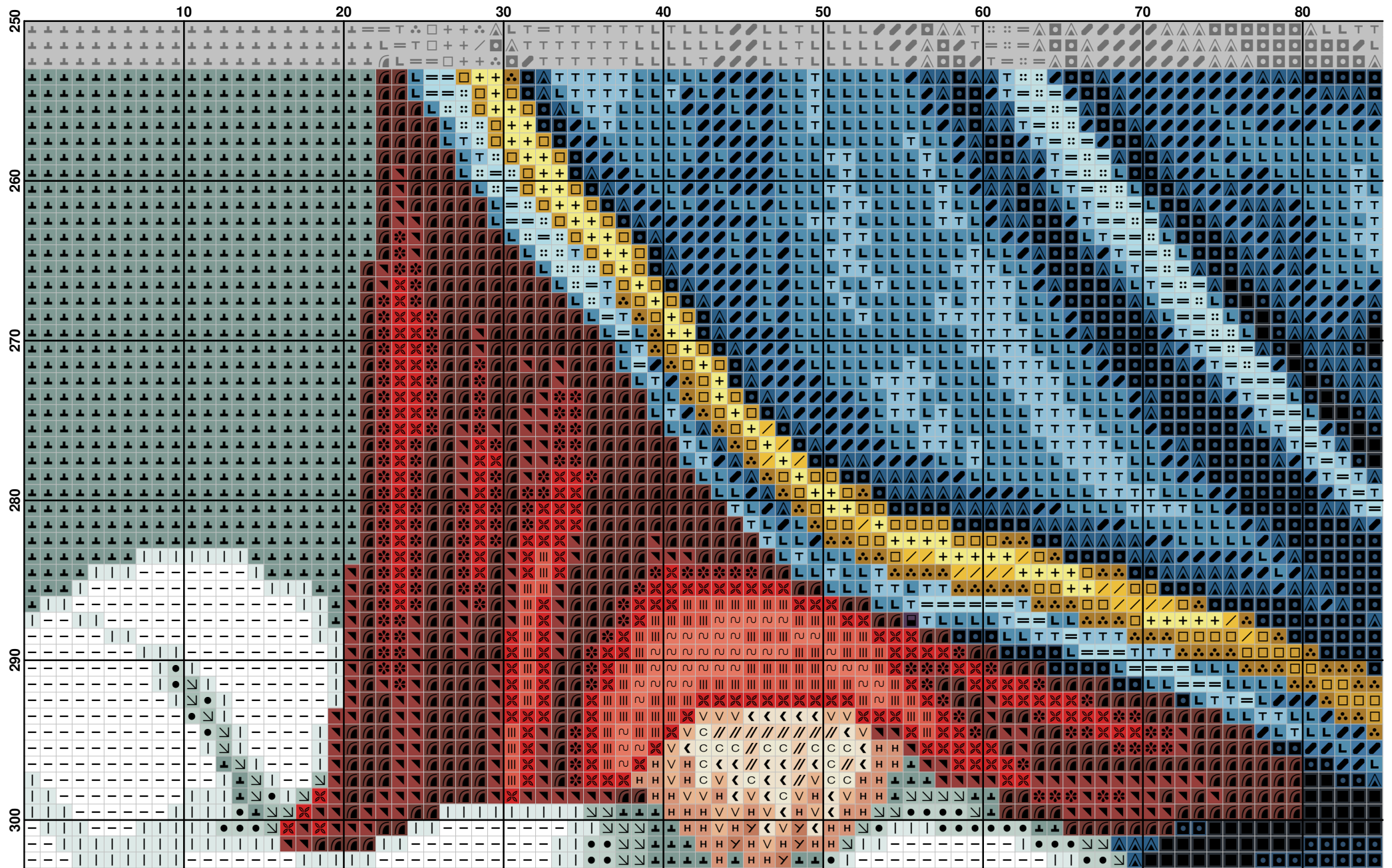
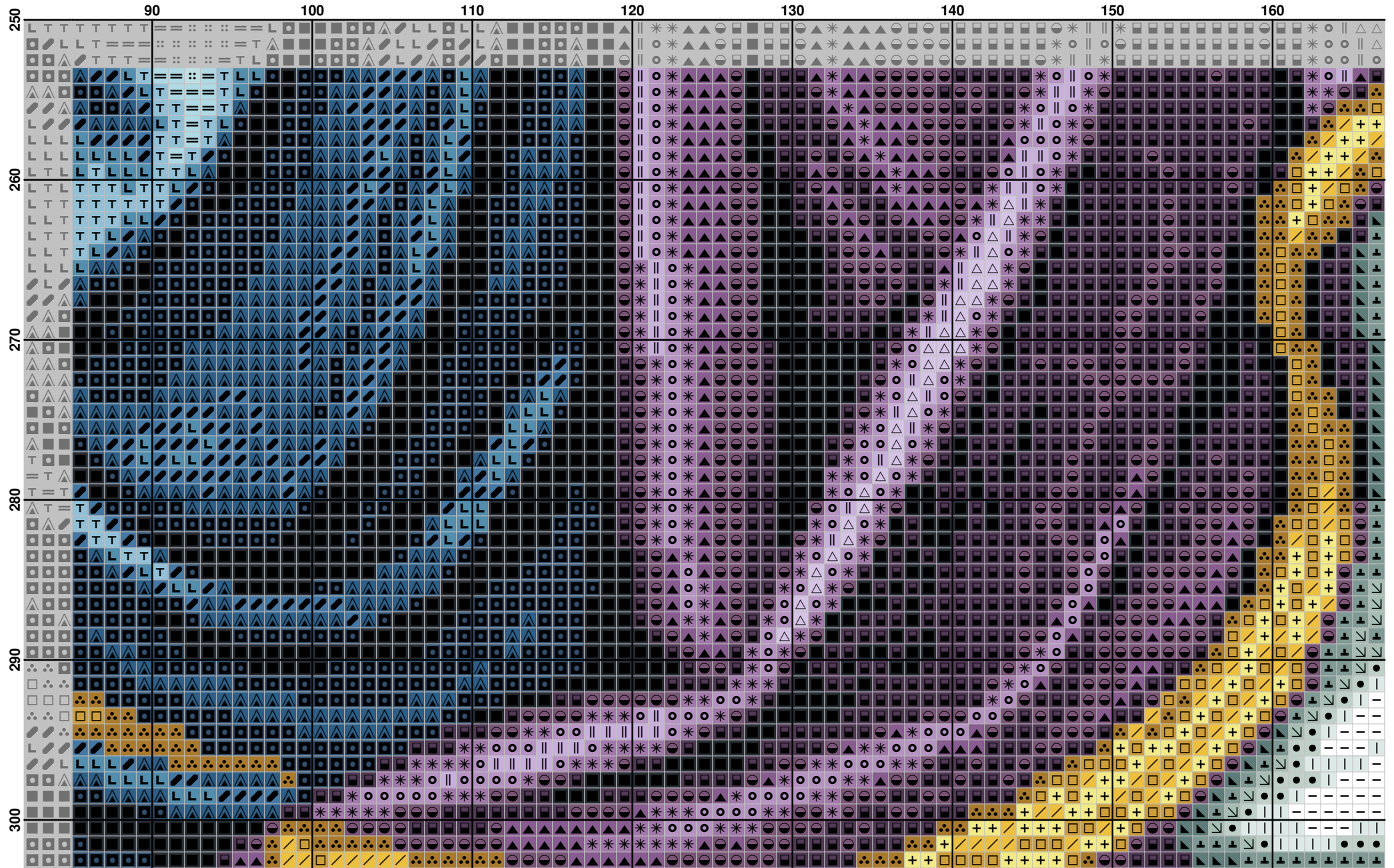


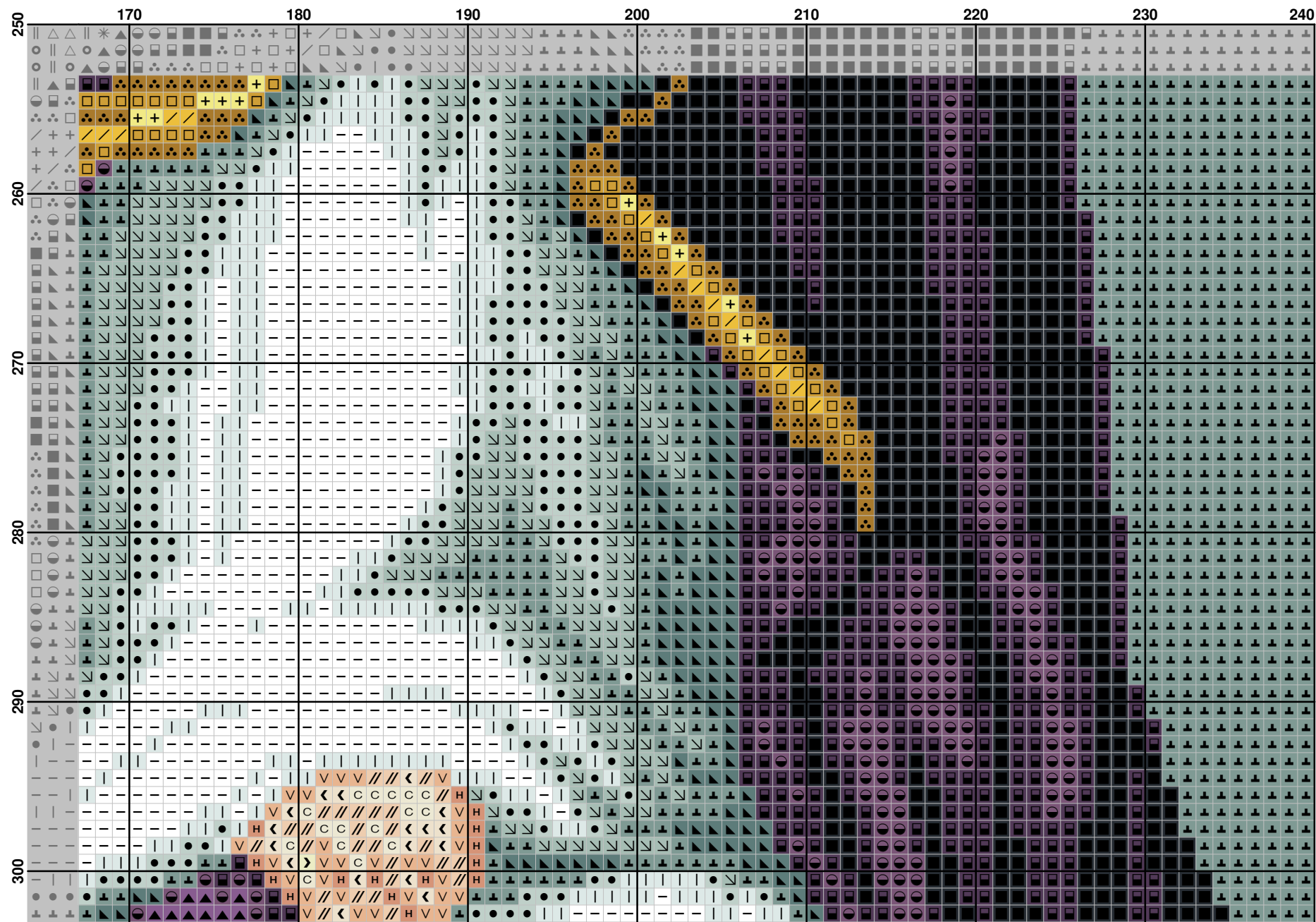
	10	20	30	40	50	60	70	80
200								
210								
220								
230								
240								
250								

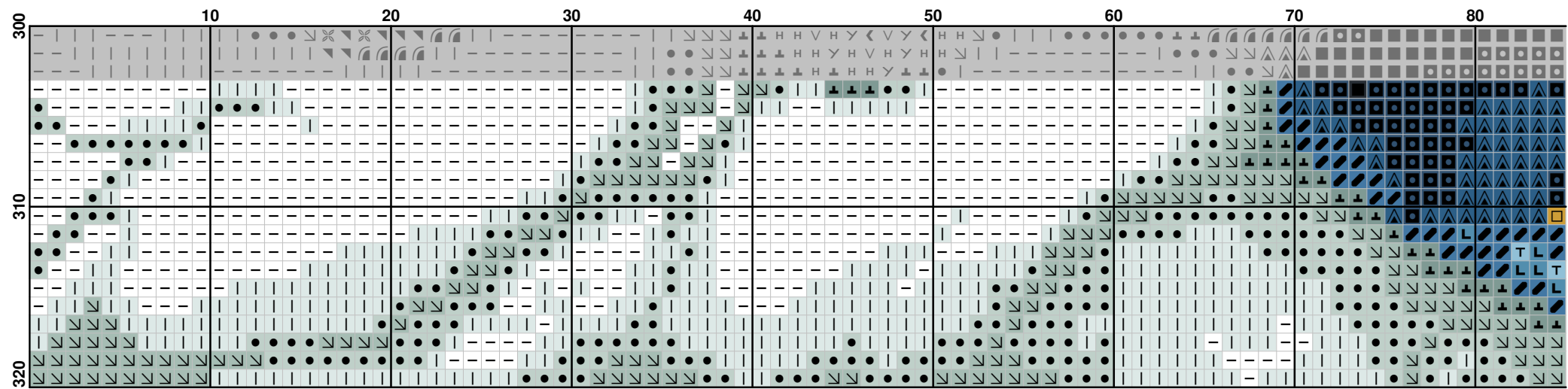


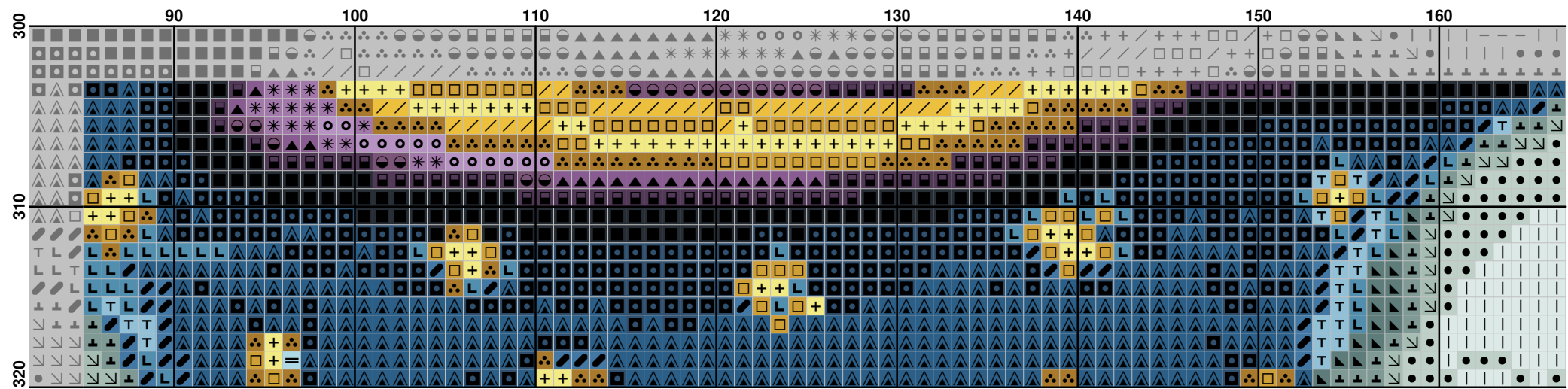


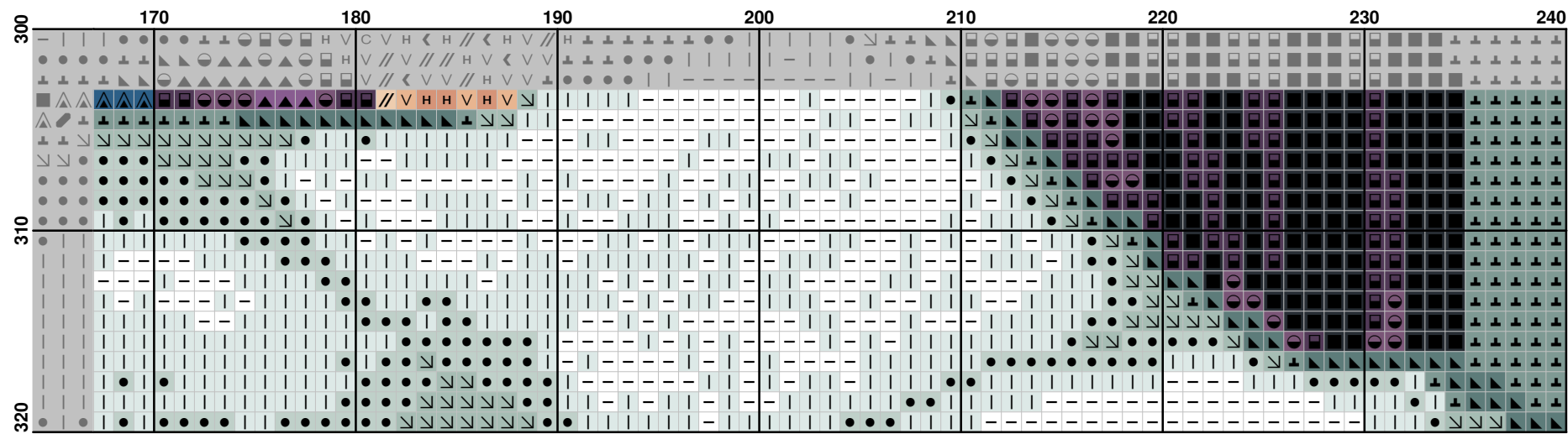






















Pattern Name: Sveta Troitca
Designed By: Ginokardia
Company: dani
Copyright: dimdan333@abv.bg
Fabric: Aida 14, White
 240w X 320h Stitches
Size: 14 Count, 43.54w X 58.06h cm

Floss Used for Full Stitches:



Symbol	Strands	Type	Number	Color
	2	DMC	209	Lavender-DK
	2	DMC	210	Lavender-MD
	2	DMC	211	Lavender-LT
	2	DMC	304	Christmas Red-MD
	2	DMC	311	Wedgewood-VY DK
	2	DMC	327	Lavender-VY DK
	2	DMC	350	Coral-MD
	2	DMC	351	Coral
	2	DMC	356	Terra Cotta-MD
	2	DMC	433	Brown-MD
	2	DMC	517	Wedgewood-DK
	2	DMC	519	Sky Blue
	2	DMC	550	Violet-VY DK
	2	DMC	552	Violet-MD
	2	DMC	553	Violet
	2	DMC	666	Christmas Red-BRT
	2	DMC	727	Topaz-VY LT
	2	DMC	728	Topaz
	2	DMC	754	Peach-LT
	2	DMC	780	Topaz-UL VY DK
	2	DMC	781	Topaz-VY DK
	2	DMC	783	Topaz-MD
	2	DMC	814	Garnet-DK
	2	DMC	816	Garnet
	2	DMC	828	Sky Blue-UL VY LT
	2	DMC	898	Coffee Brown-VY DK
	2	DMC	926	Gray Green-MD
	2	DMC	927	Gray Green-LT
	2	DMC	928	Gray Green-VY LT
	2	DMC	939	Navy Blue-VY DK
	2	DMC	948	Peach-VY LT
	2	DMC	3371	Black Brown
	2	DMC	3756	Baby Blue-UL VY LT
	2	DMC	3760	Wedgewood-MD
	2	DMC	3761	Sky Blue-LT
	2	DMC	3768	Gray Green-DK
	2	DMC	3770	Tawny-VY LT
	2	DMC	3771	Terra Cotta-UL VY LT

Symbol	Strands	Type	Number	Color
 	2	DMC	3778	Terra Cotta-LT
 	2	DMC	3823	Yellow-UL Pale
 	2	DMC	3842	Wedgewood-DK
 	2	DMC	B5200	Snow White

Floss Used for French Knots:

Symbol	Strands	Type	Number	Color
 	1	DMC	3371	Black Brown

Floss Used for Back Stitches:

Symbol	Strands	Type	Number	Color
 	1	DMC	3371	Black Brown