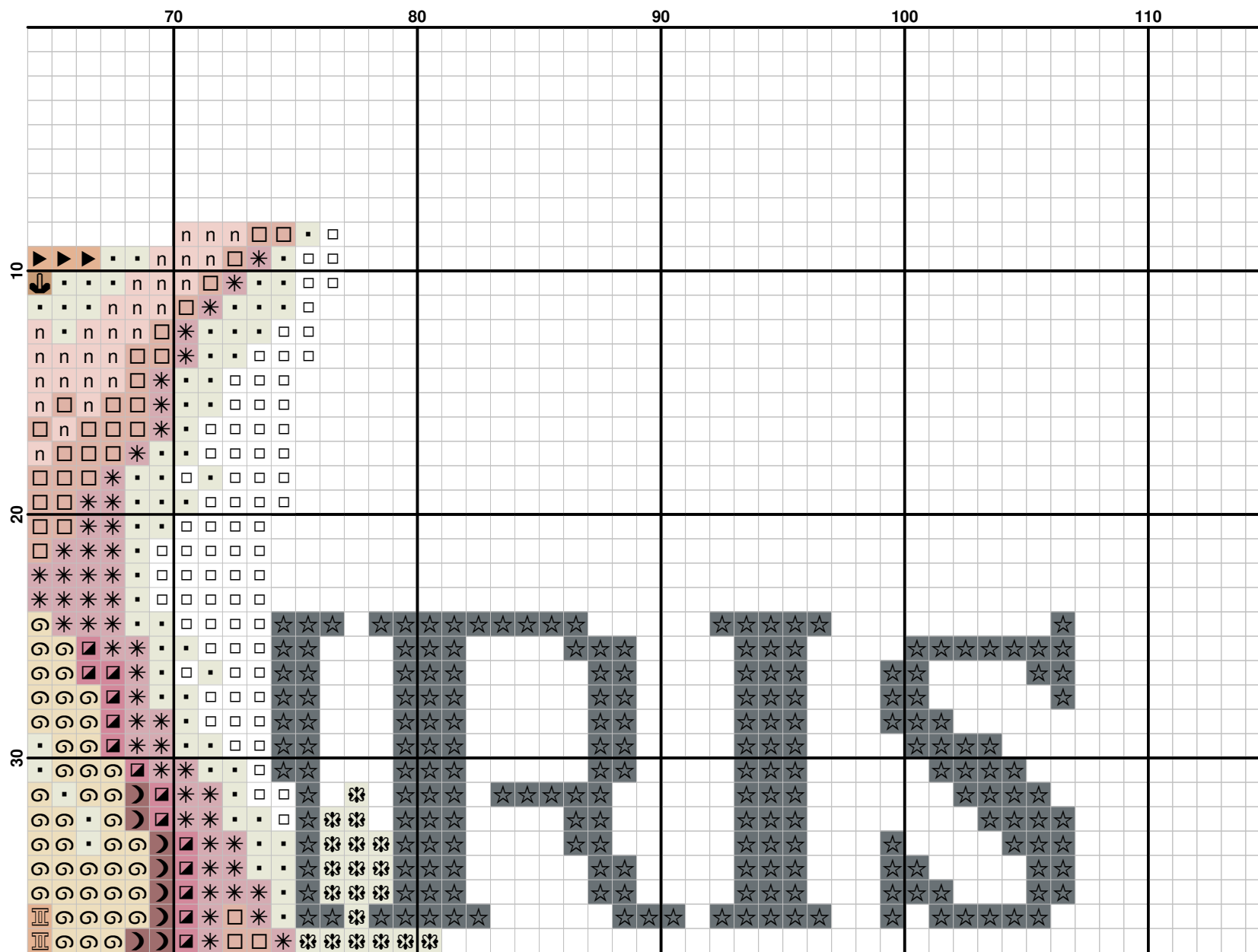
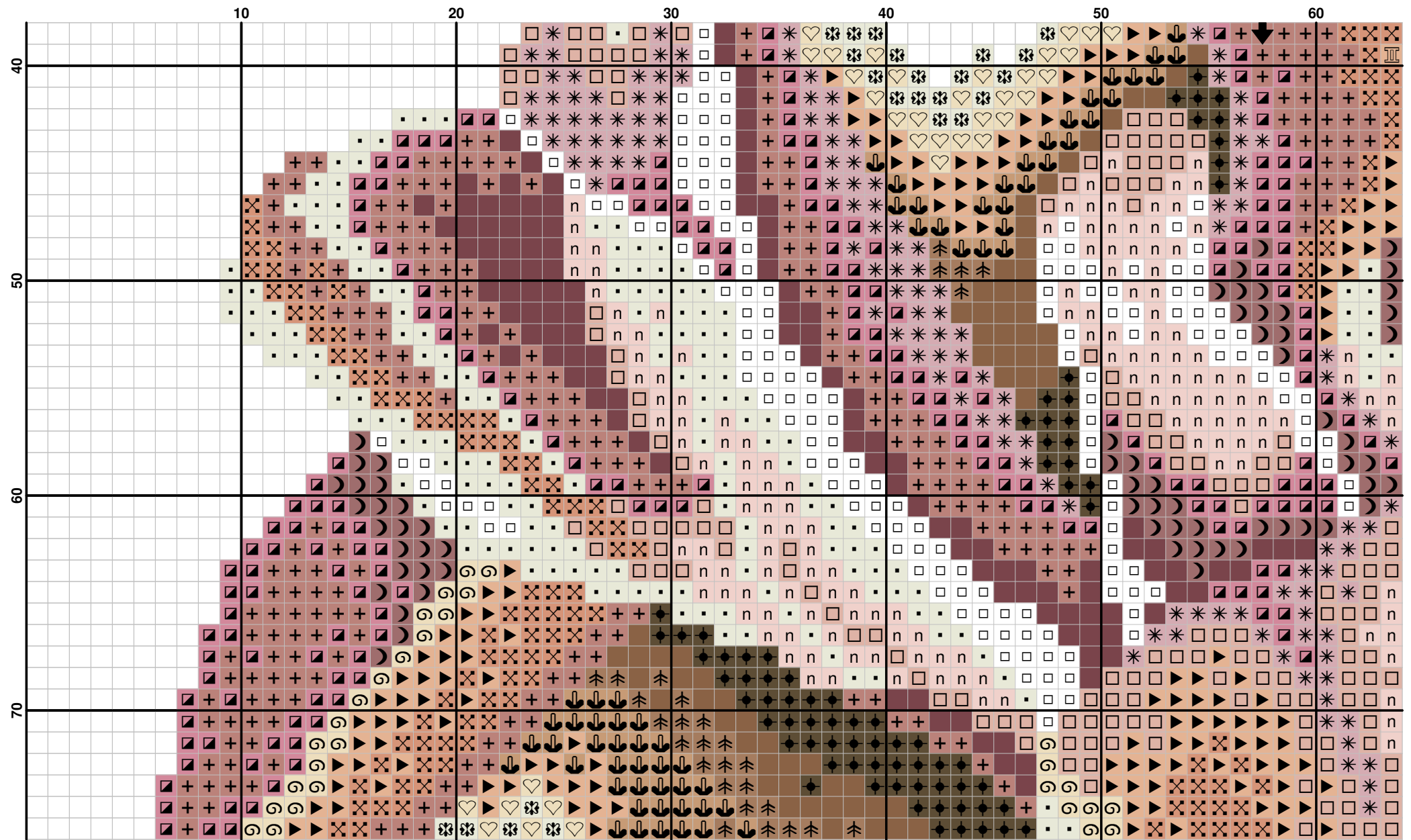
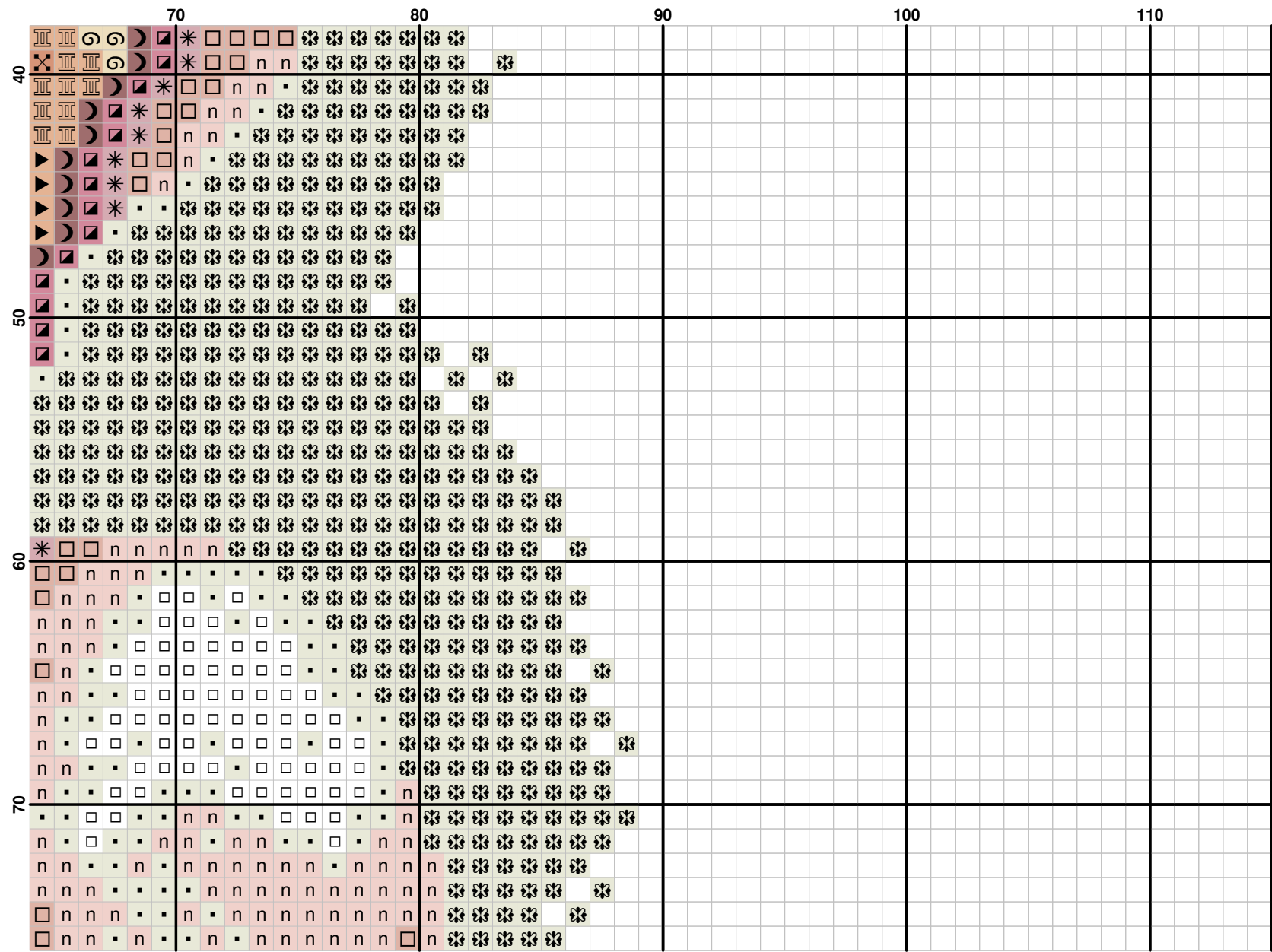


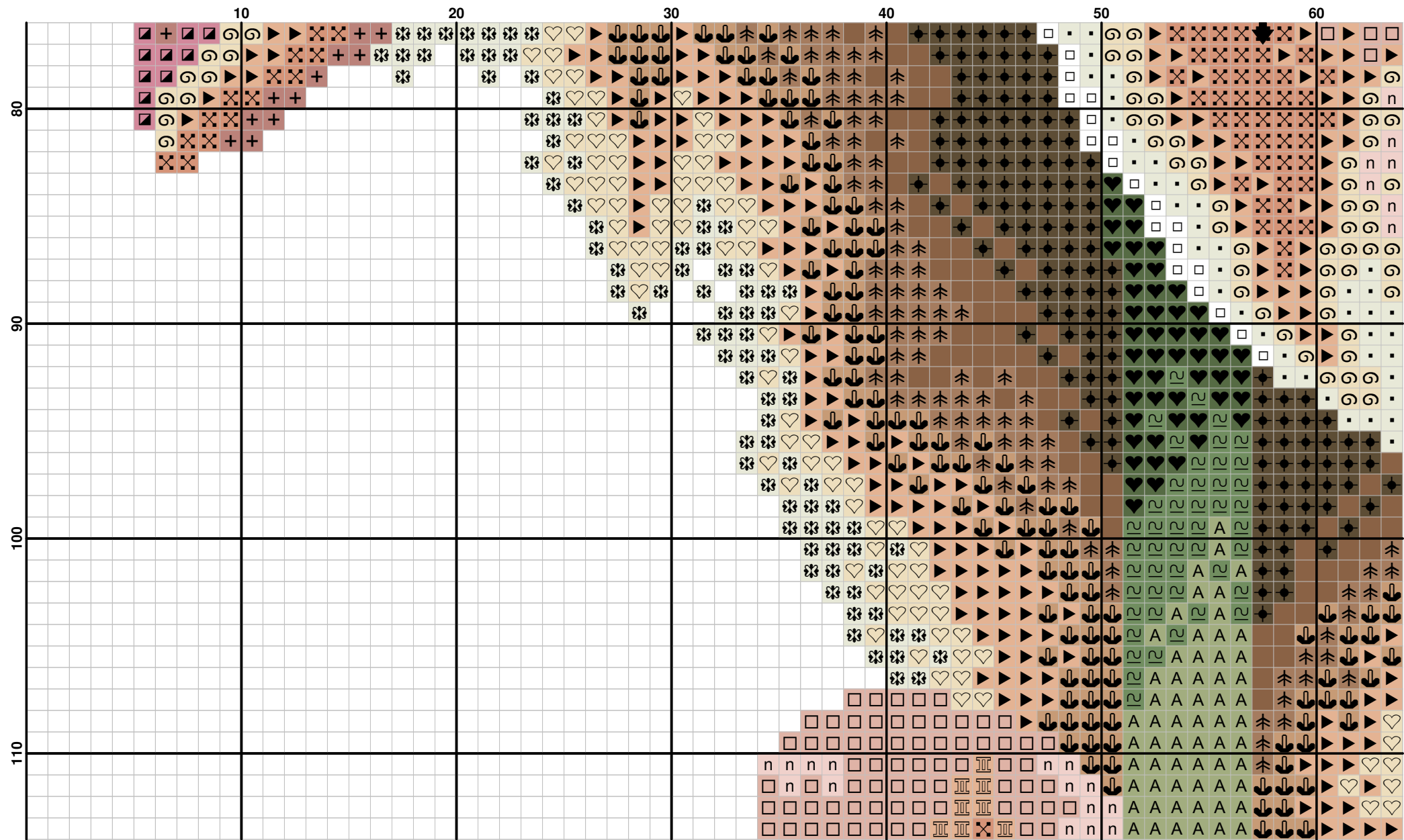
(3)

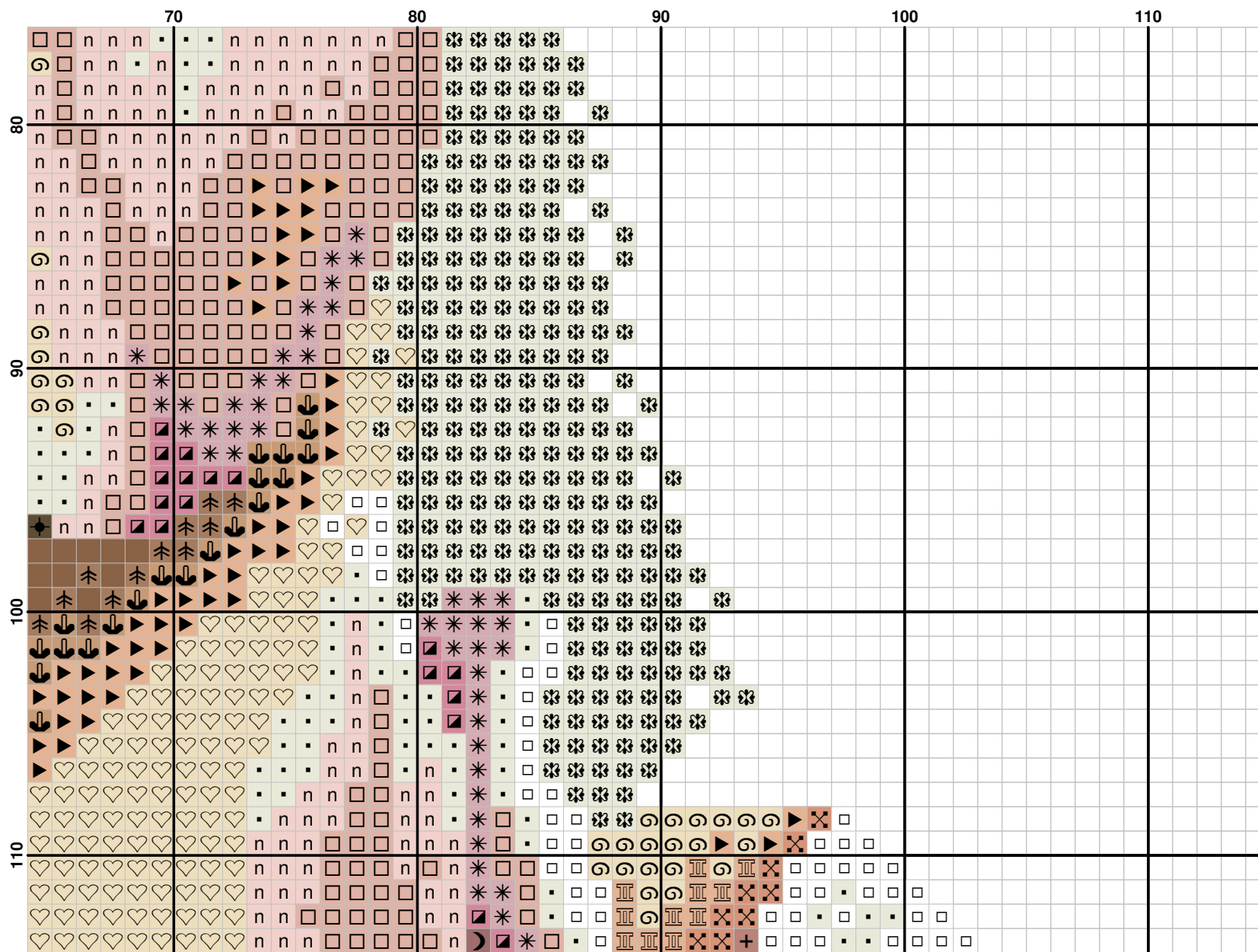
(4)

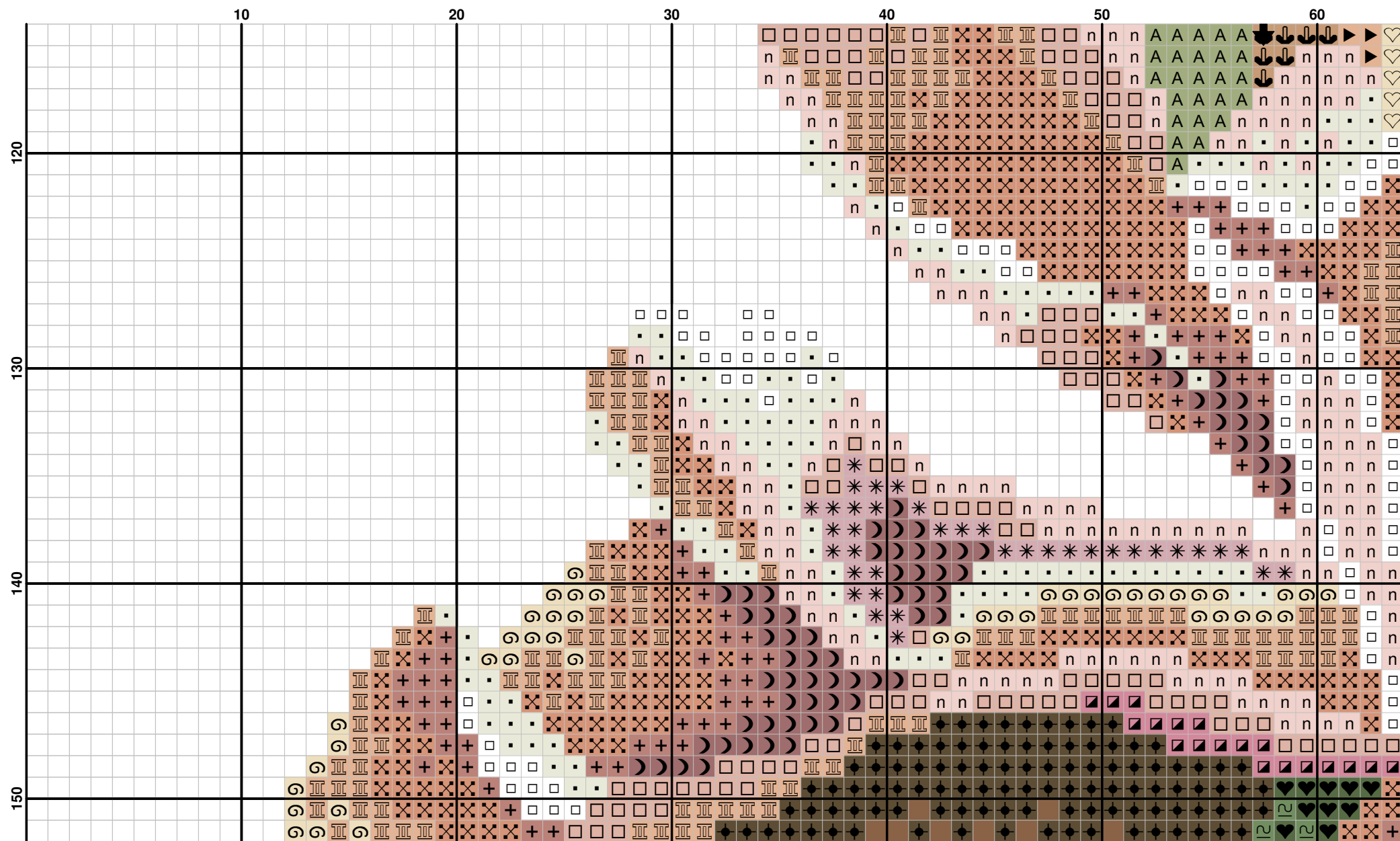




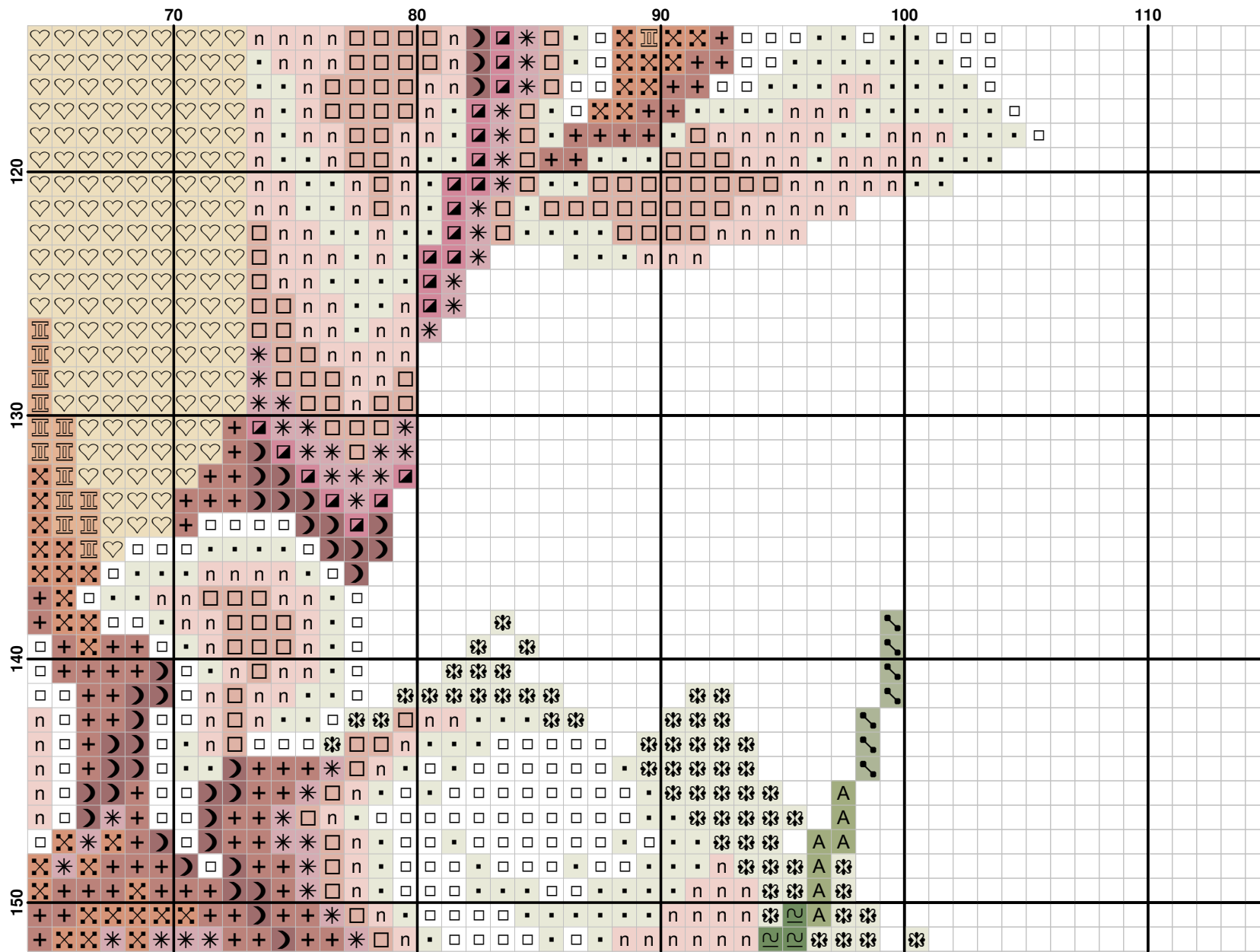




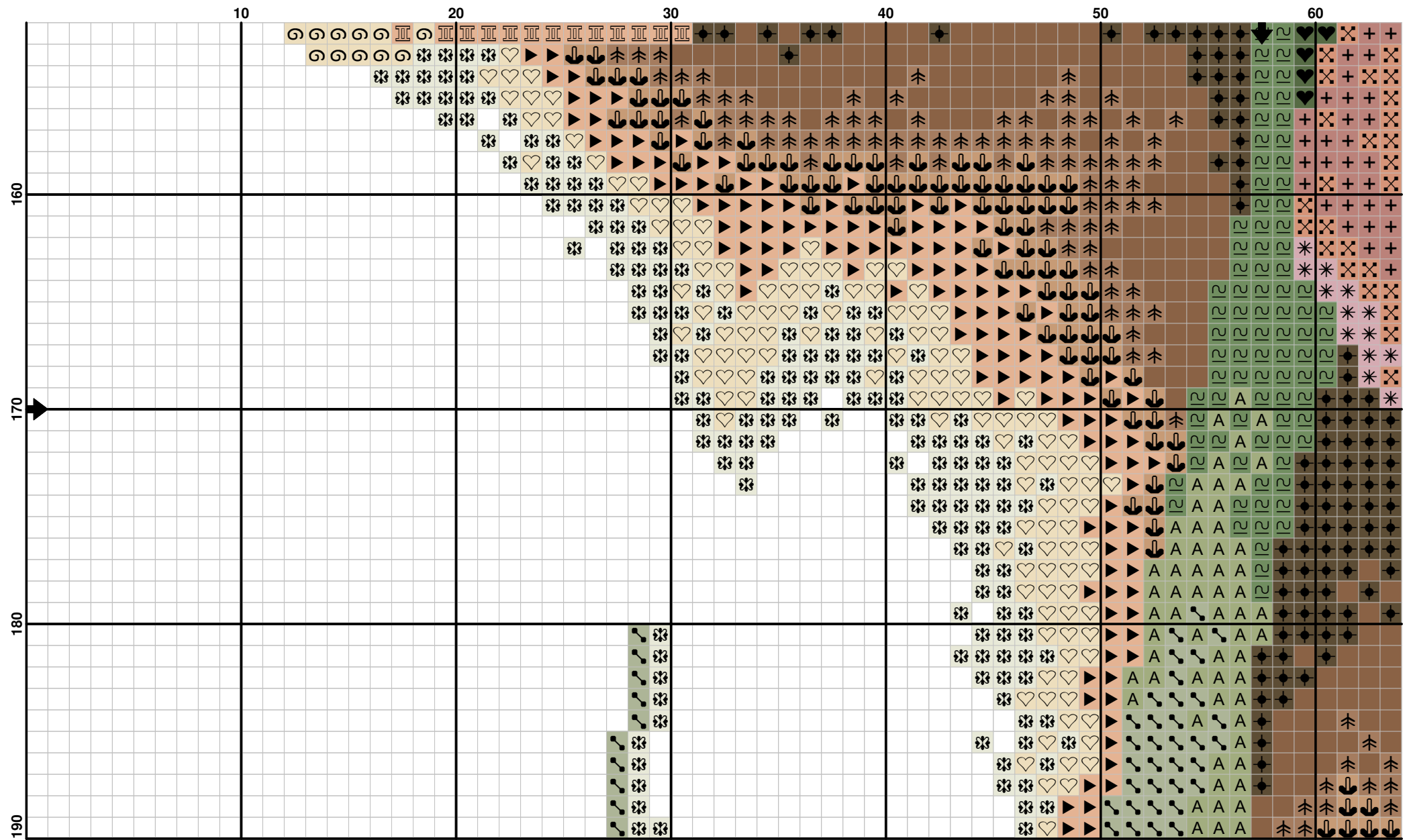


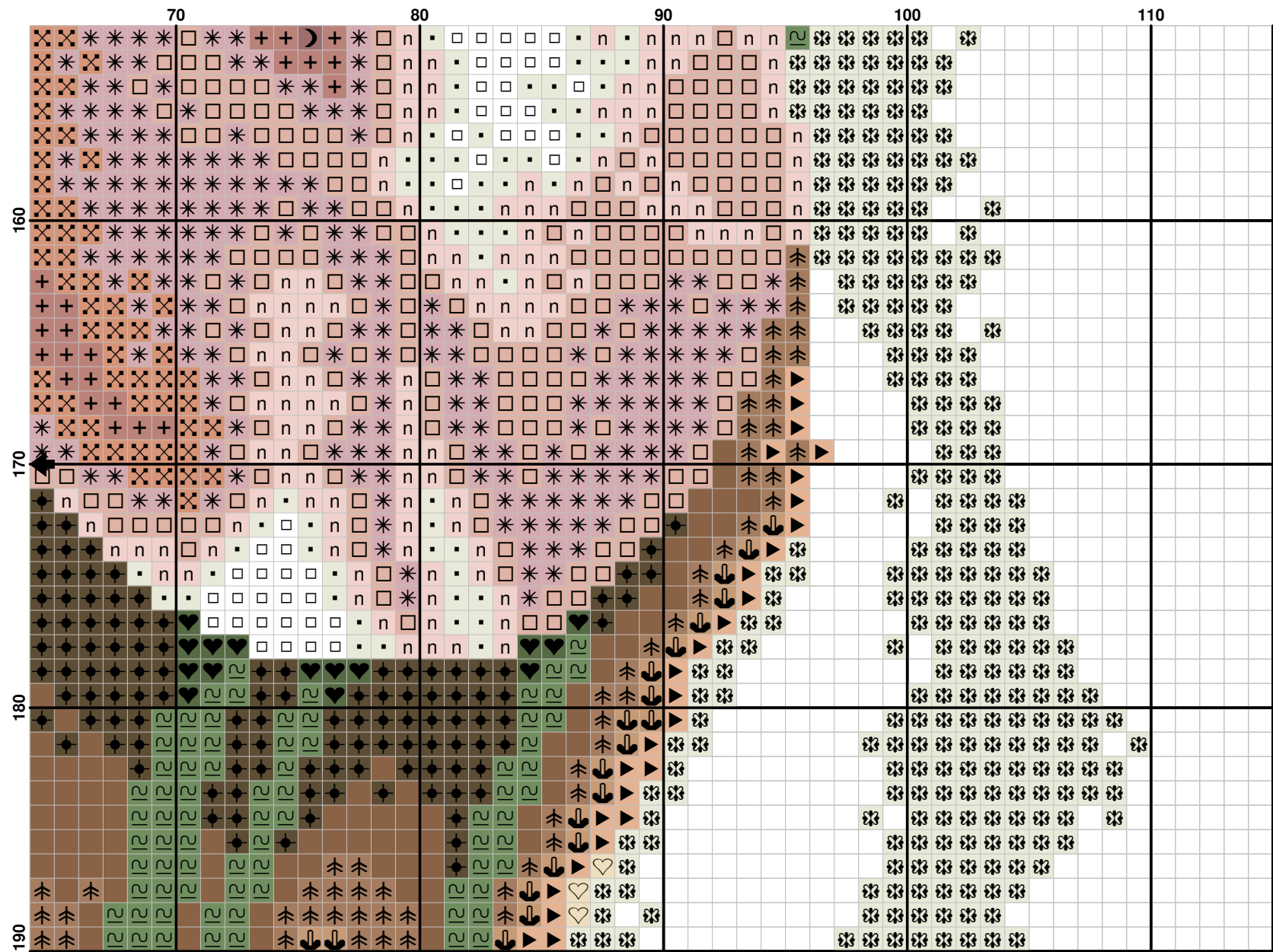


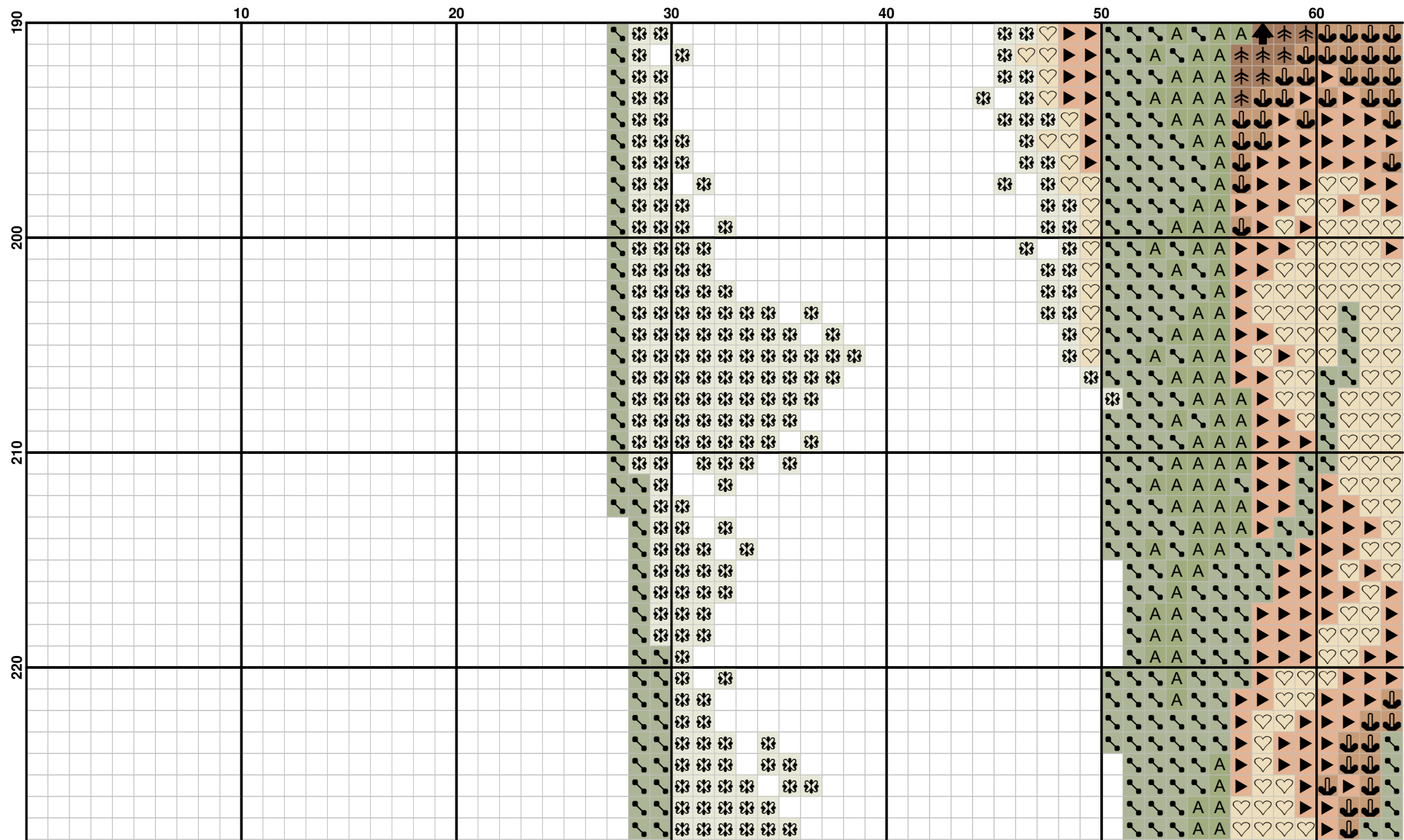
(10)

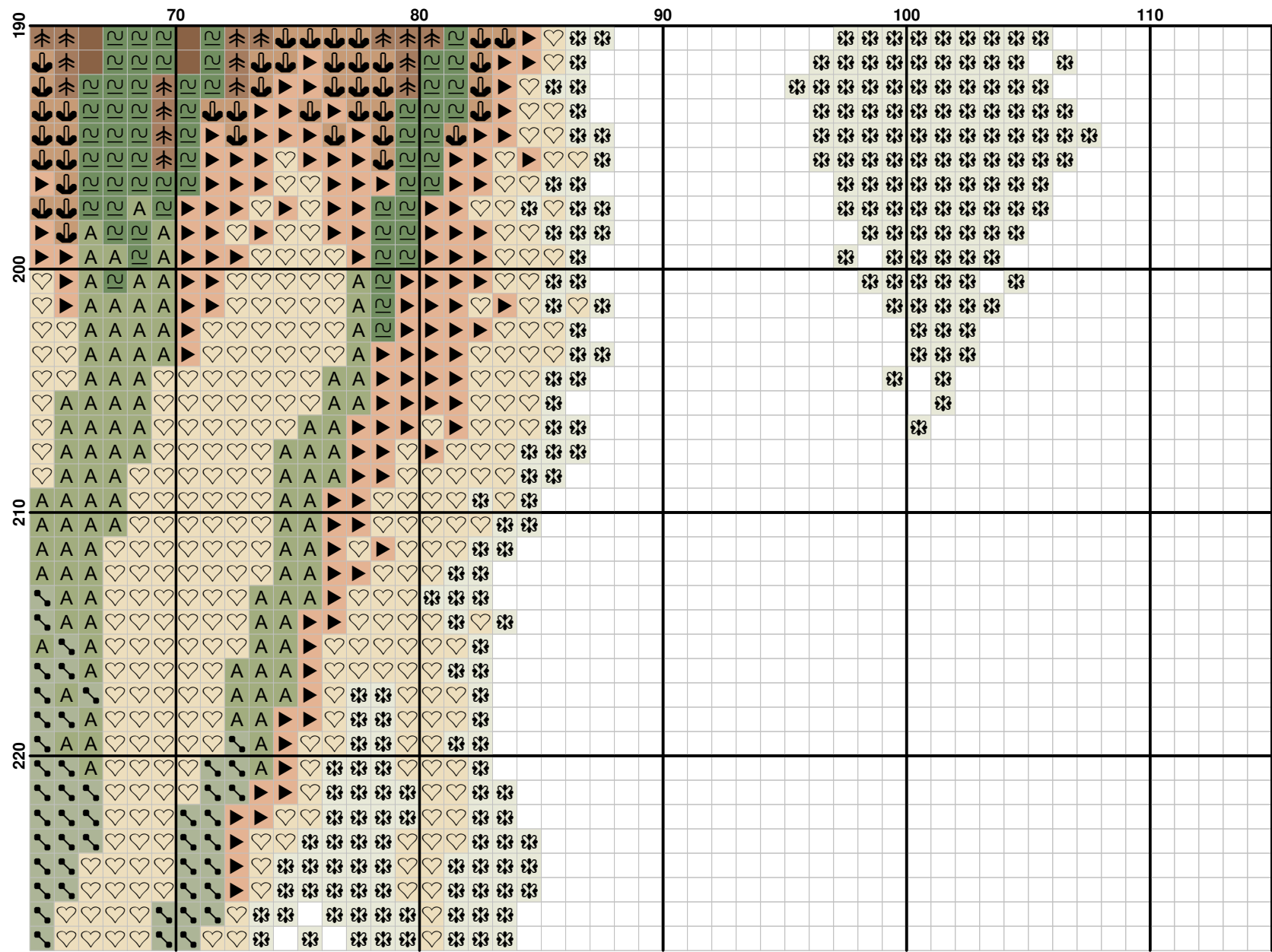


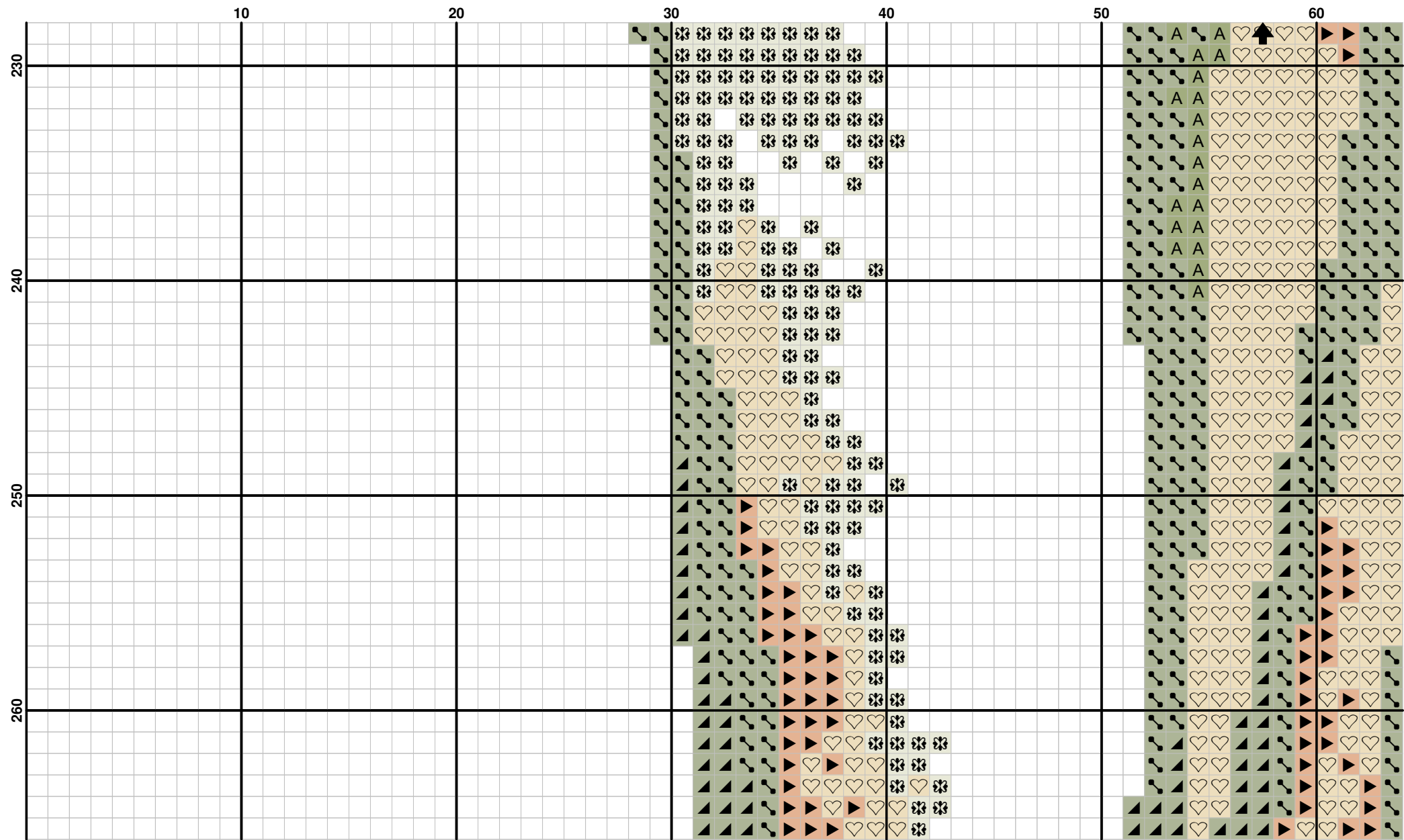


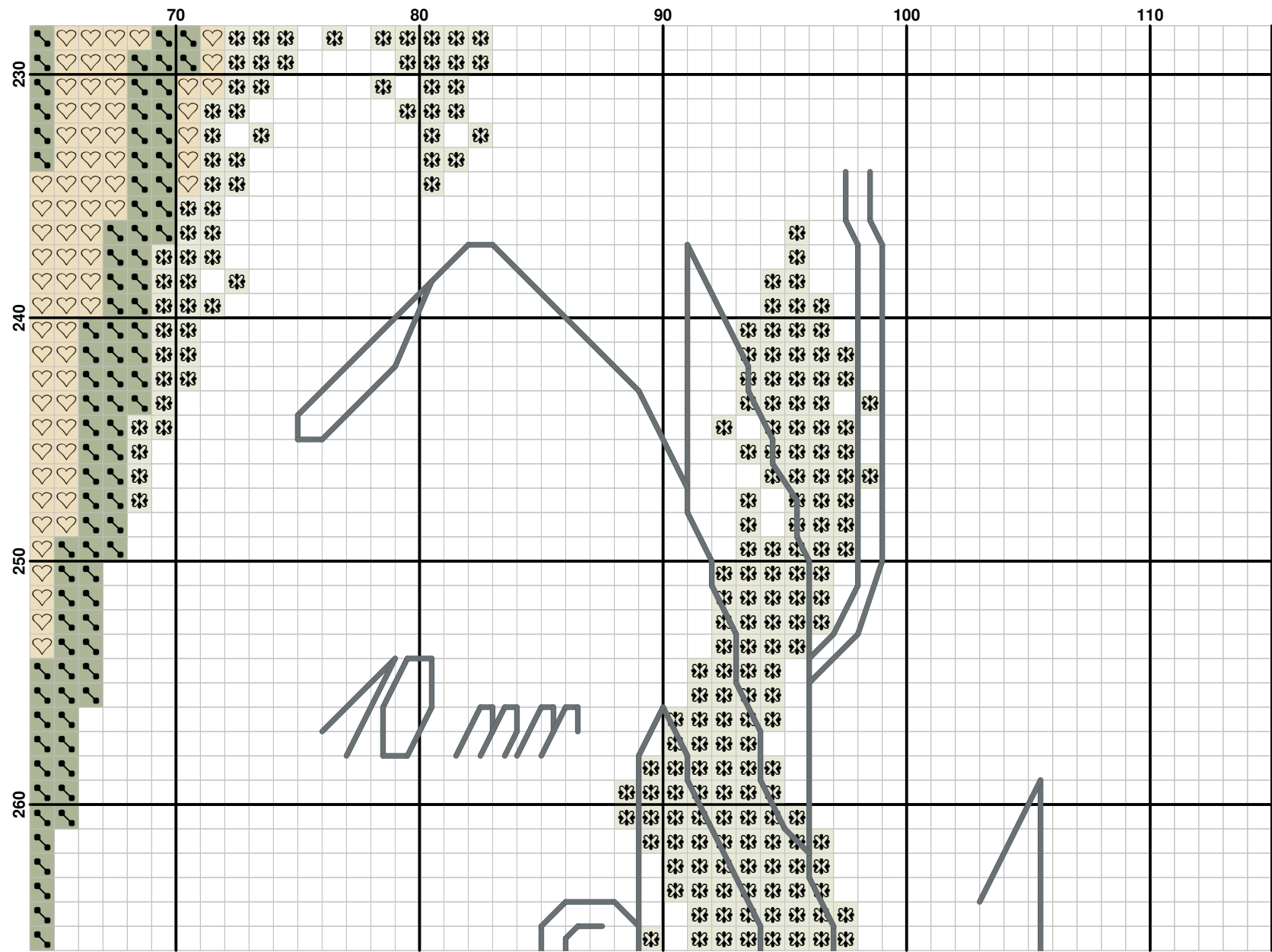


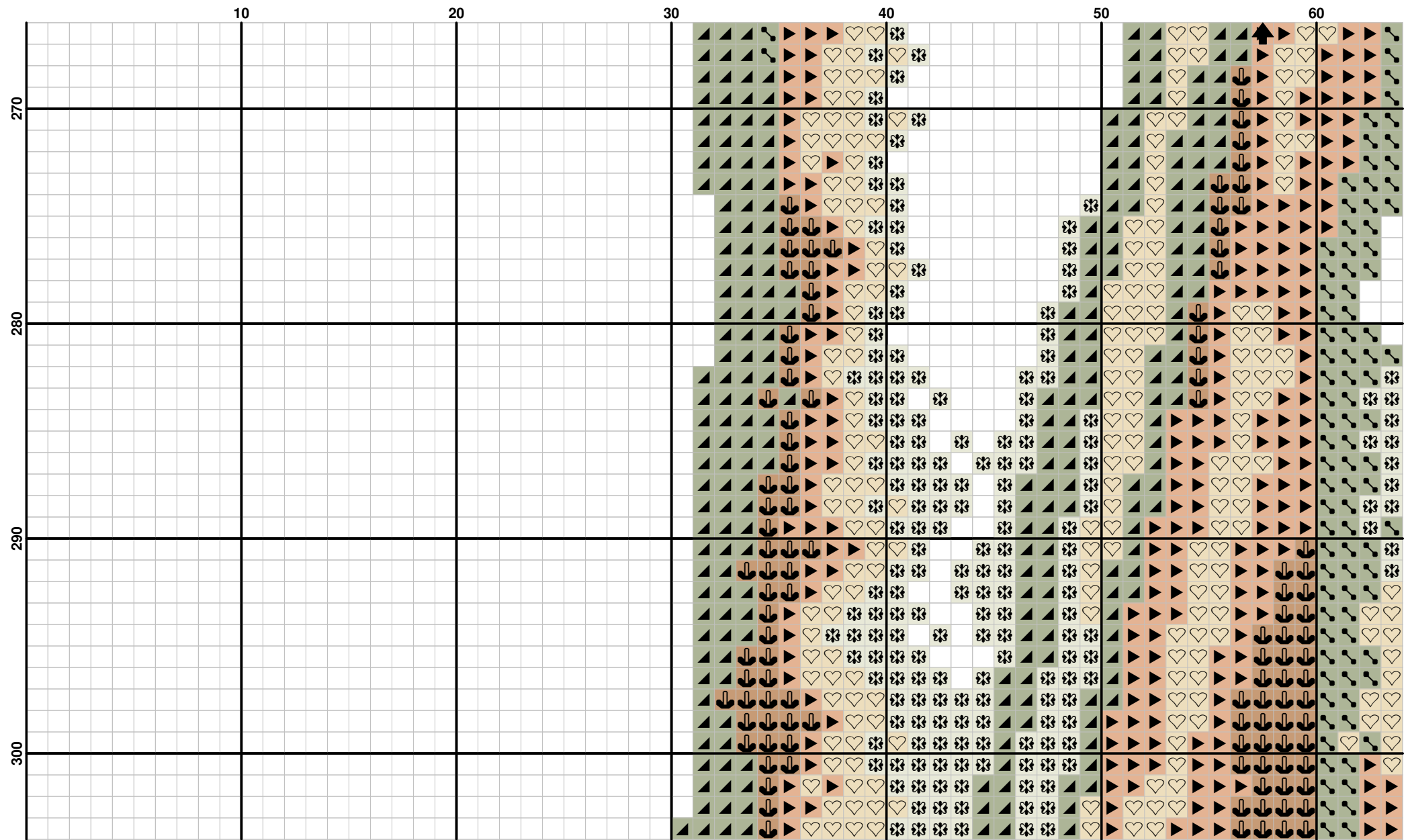


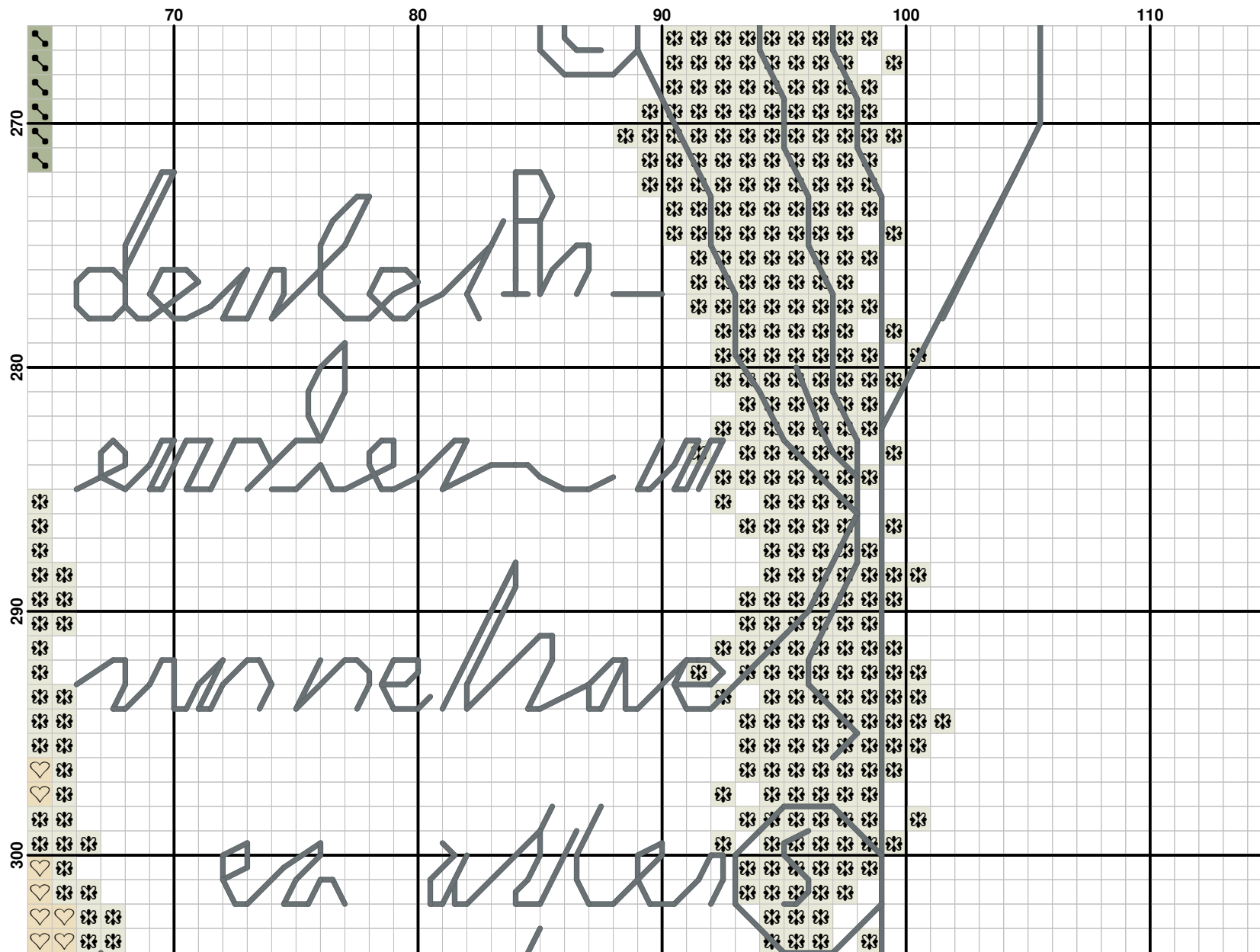




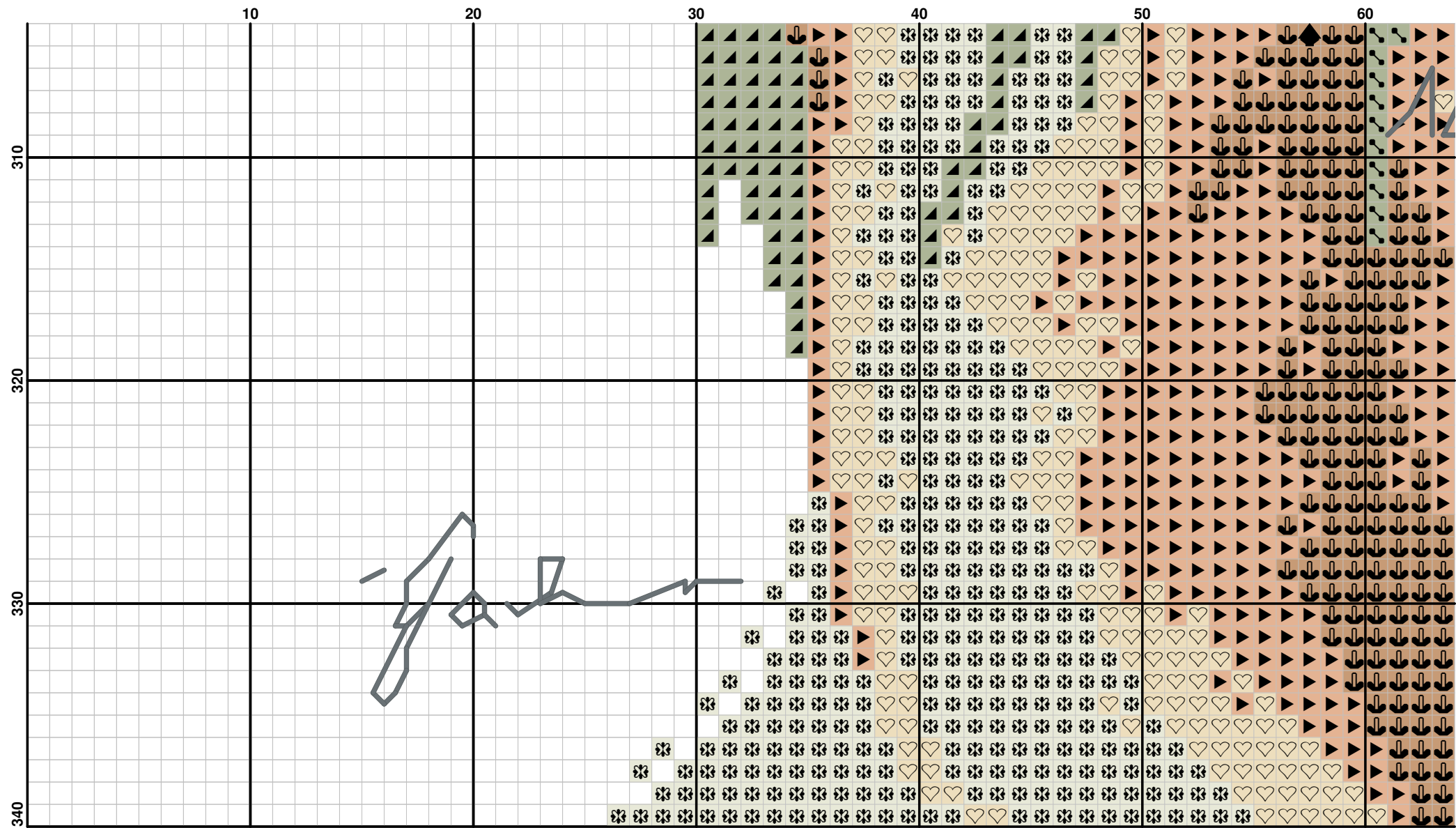


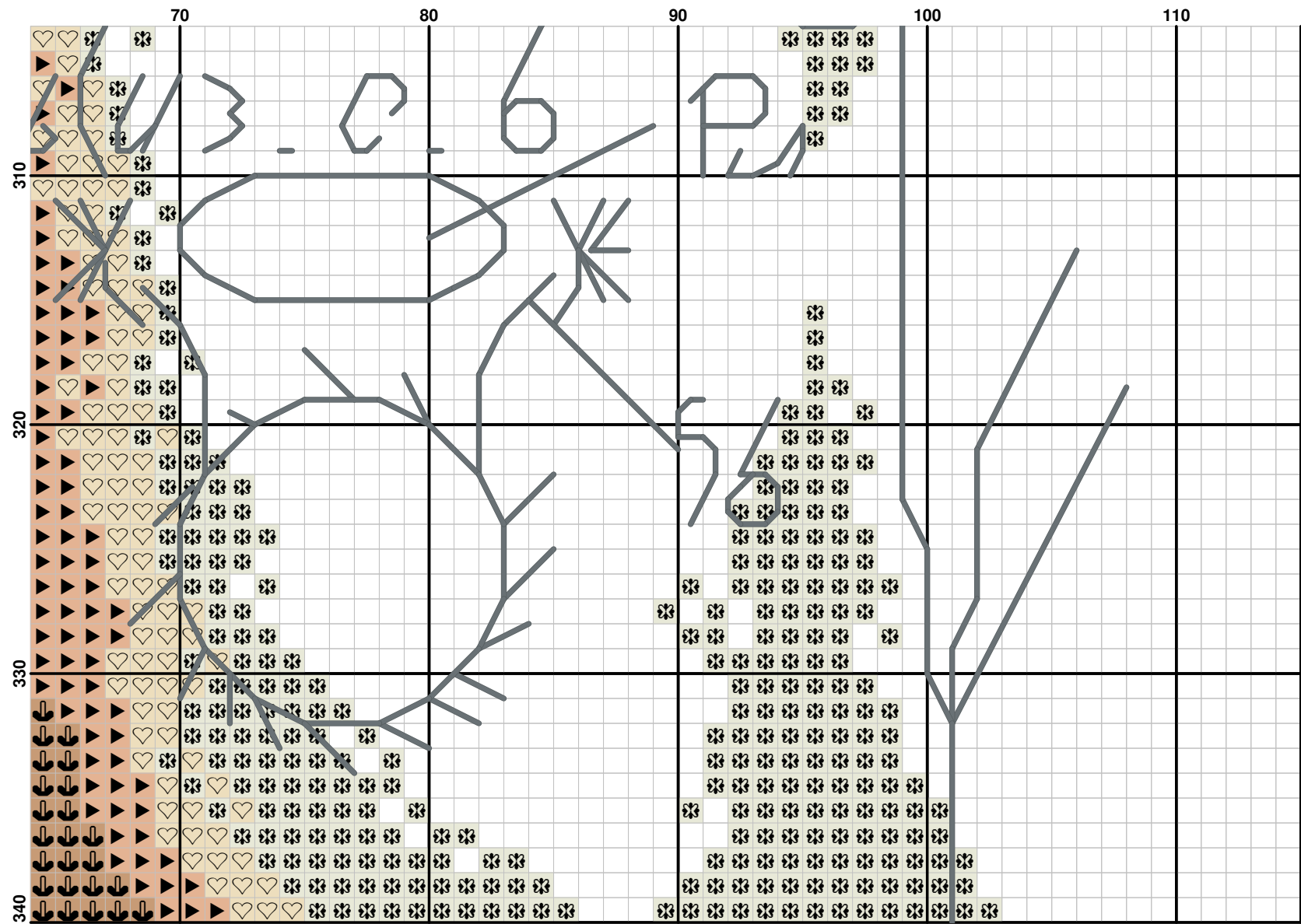


















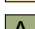





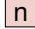









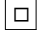








**Pattern Name:** № 34925**Designed By:** Lanarte**Company:** OLARI**Fabric:** Aida 14, Cream  
105w X 332h Stitches**Size:** 14 Count, 19.05w X 60.23h cm**Floss Used for Full Stitches:**

Symbol	Strands	Type	Number	Color
	2	DMC	223	Shell Pink-LT
	2	DMC	224	Shell Pink-VY LT
	1	DMC	317	Pewter Gray
	1	DMC	524	Fern Green-VY LT
	2	DMC	524	Fern Green-VY LT
	1	DMC	632	Desert Sand-UL VY DK
	1	DMC	712	Cream
	2	DMC	712	Cream
	1	DMC	758	Terra Cotta-VY LT
	2	DMC	758	Terra Cotta-VY LT
	1	DMC	838	Beige Brown-VY DK
	1	DMC	951	Tawny-LT
	2	DMC	951	Tawny-LT
	2	DMC	3053	Green Gray
	1	DMC	3064	Desert Sand
	2	DMC	3362	Pine Green-DK
	2	DMC	3363	Pine Green-MD
	2	DMC	3688	Mauve-MD
	2	DMC	3713	Salmon-VY LT
	2	DMC	3726	Antique Mauve-DK
	2	DMC	3727	Antique Mauve-LT

Symbol		Strands	Type	Number	Color
		1	DMC	3772	Desert Sand-VY DK
		2	DMC	3778	Terra Cotta-LT
		2	DMC	3802	Antique Mauve-VY DK
		2	DMC	White	White

Floss Used for Back Stitches:

Symbol		Strands	Type	Number	Color
		1	DMC	317	Pewter Gray

**Расход нитей****Нитей в мотке:** 6**Длина мотка:** 795.0 cm

Type	Number	Full	Half	Quarter	Petite	Back(cm)	Str(cm)	Spec(cm)	French	Bead	Skein Est.
■ DMC	223	501	0	0	0	0.0	0.0	0.0	0	0	0.277
■ DMC	224	877	0	0	0	0.0	0.0	0.0	0	0	0.486
■ DMC	317	194	0	0	0	74.9	0.0	0.0	0	0	0.106
■ DMC	524	402	0	0	0	0.0	0.0	0.0	0	0	0.111
■ DMC	524	757	0	0	0	0.0	0.0	0.0	0	0	0.419
■ DMC	632	420	0	0	0	0.0	0.0	0.0	0	0	0.116
■ DMC	712	3290	0	0	0	0.0	0.0	0.0	0	0	0.911
■ DMC	712	832	0	0	0	0.0	0.0	0.0	0	0	0.461
■ DMC	758	1492	0	0	0	0.0	0.0	0.0	0	0	0.413
■ DMC	758	242	0	0	0	0.0	0.0	0.0	0	0	0.134
■ DMC	838	537	0	0	0	0.0	0.0	0.0	0	0	0.149
■ DMC	951	1870	0	0	0	0.0	0.0	0.0	0	0	0.518
■ DMC	951	272	0	0	0	0.0	0.0	0.0	0	0	0.151
■ DMC	3053	366	0	0	0	0.0	0.0	0.0	0	0	0.203
■ DMC	3064	764	0	0	0	0.0	0.0	0.0	0	0	0.212
■ DMC	3362	81	0	0	0	0.0	0.0	0.0	0	0	0.045
■ DMC	3363	276	0	0	0	0.0	0.0	0.0	0	0	0.153
■ DMC	3688	313	0	0	0	0.0	0.0	0.0	0	0	0.173
■ DMC	3713	882	0	0	0	0.0	0.0	0.0	0	0	0.488
■ DMC	3726	204	0	0	0	0.0	0.0	0.0	0	0	0.113
■ DMC	3727	578	0	0	0	0.0	0.0	0.0	0	0	0.320
■ DMC	3772	316	0	0	0	0.0	0.0	0.0	0	0	0.087
■ DMC	3778	556	0	0	0	0.0	0.0	0.0	0	0	0.308
■ DMC	3802	123	0	0	0	0.0	0.0	0.0	0	0	0.068

Type	Number	Full	Half	Quarter	Petite	Back(cm)	Str(cm)	Spec(cm)	French	Bead	Skein Est.
<input type="checkbox"/> DMC	White	704	0	0	0	0.0	0.0	0.0	0	0	0.390