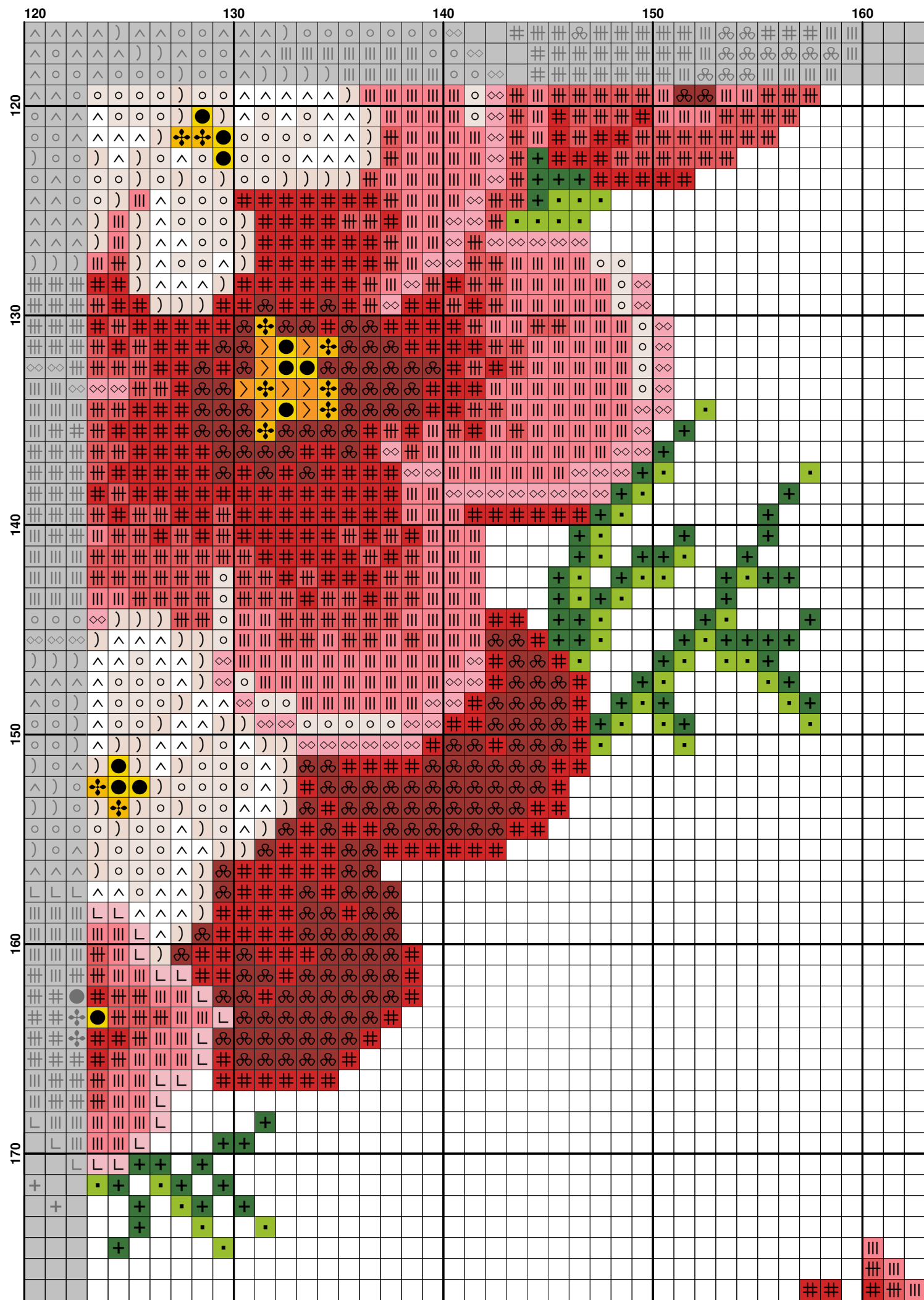
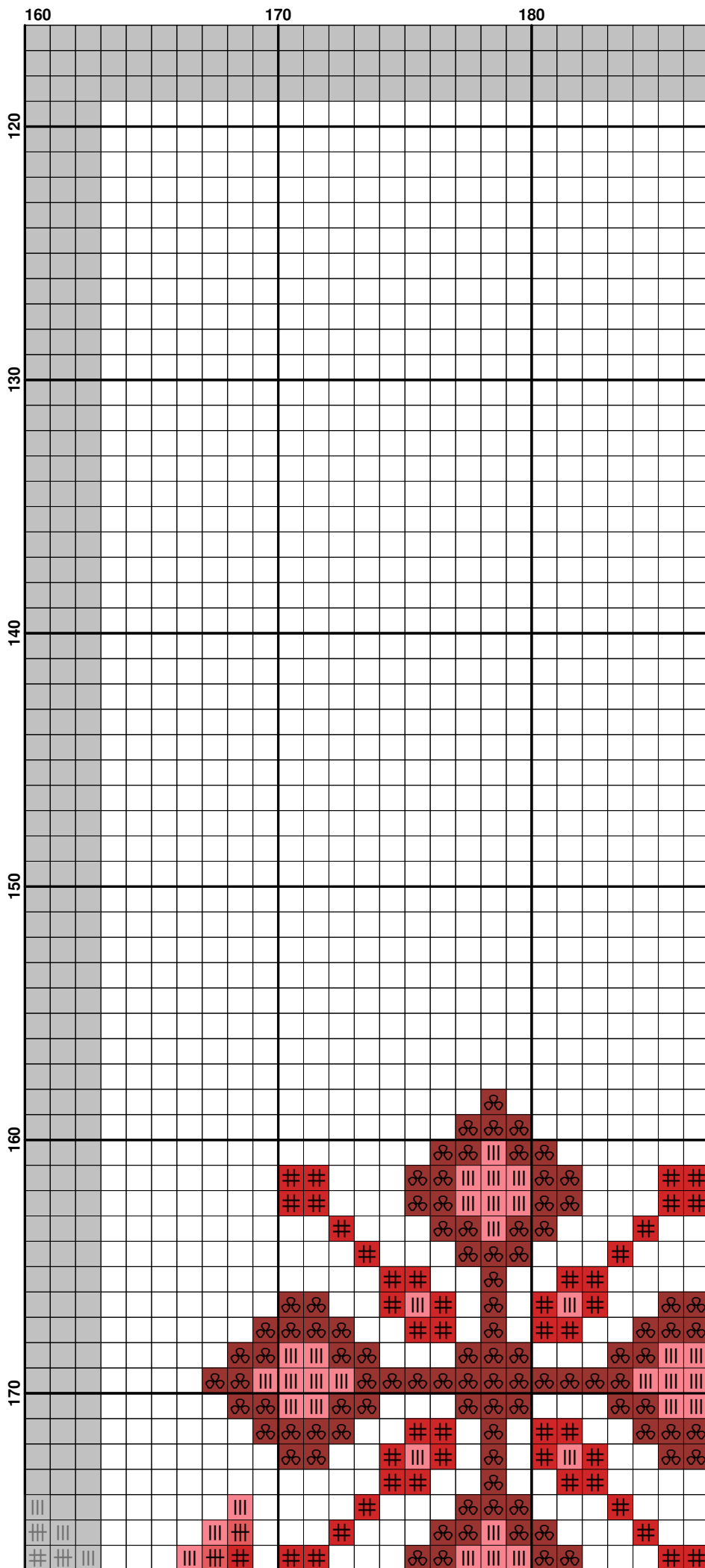
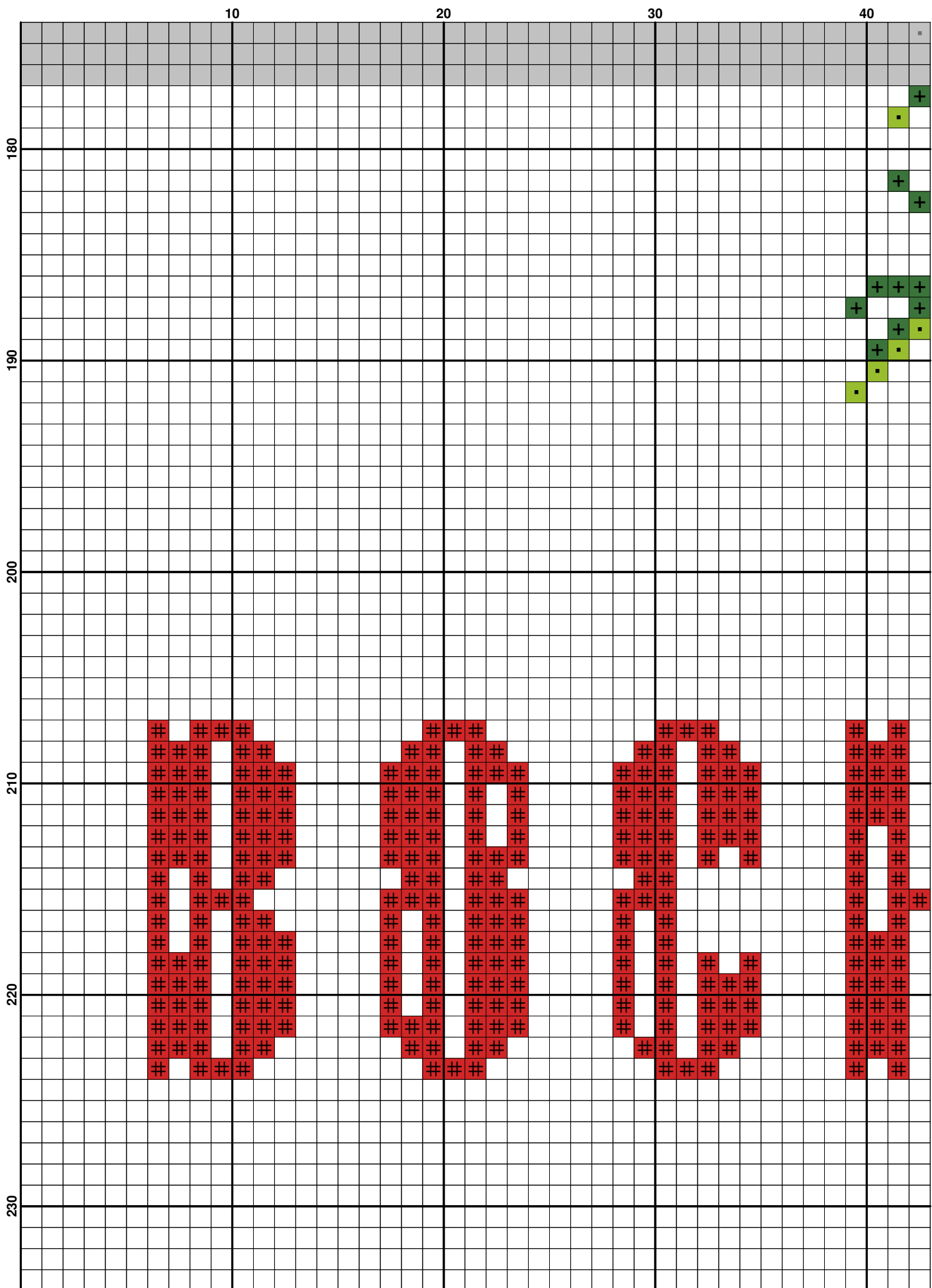
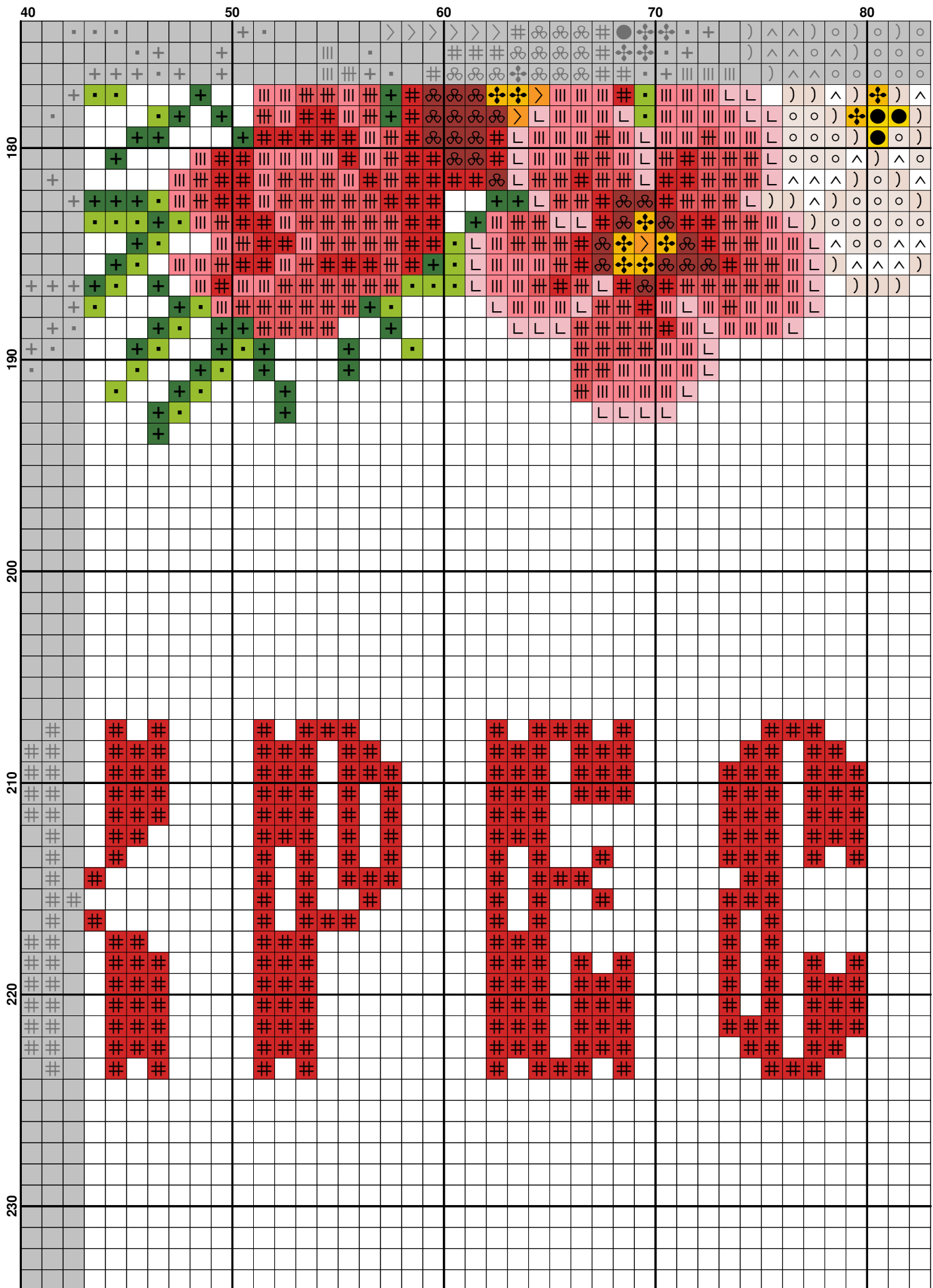


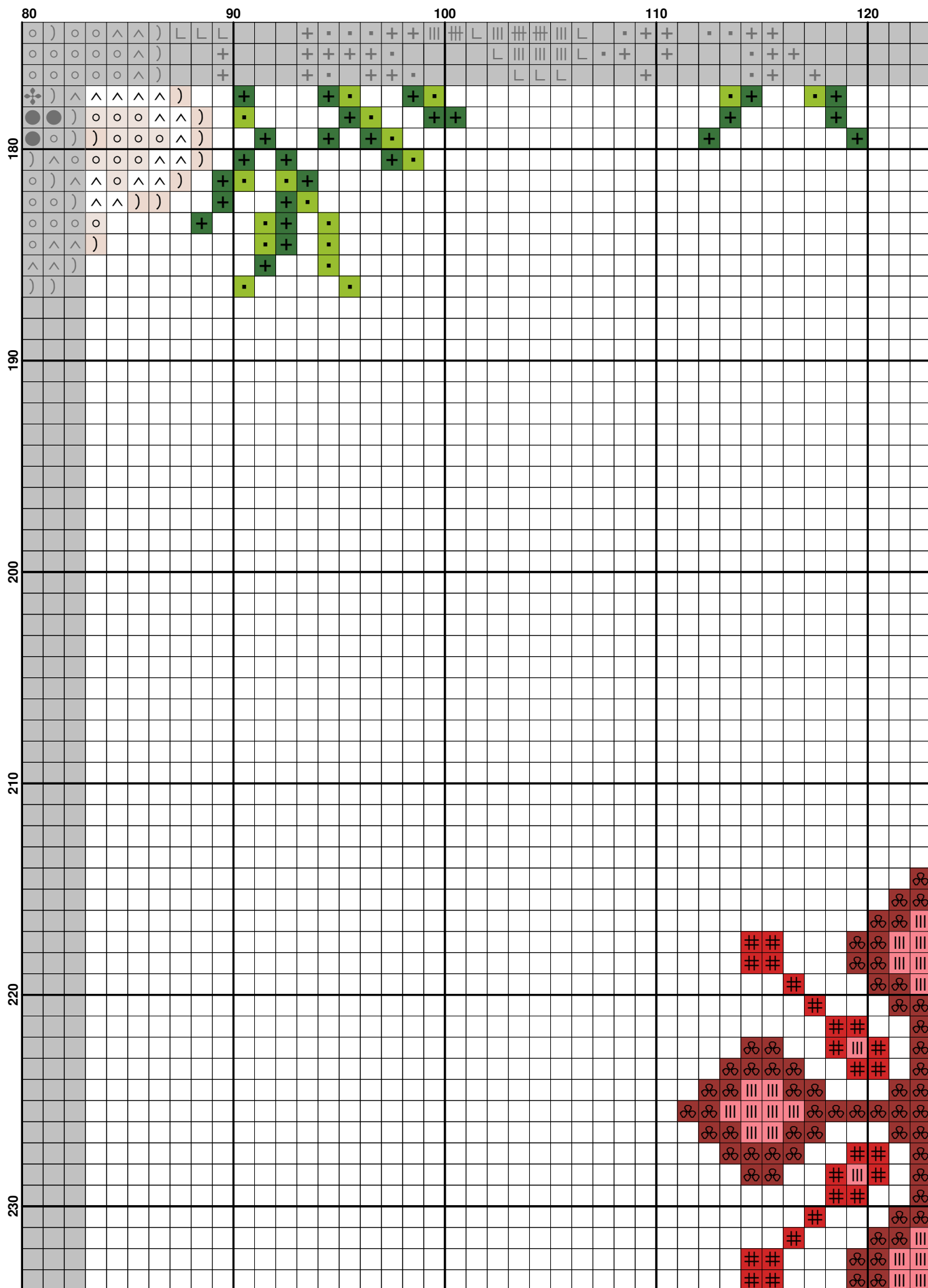
(19)

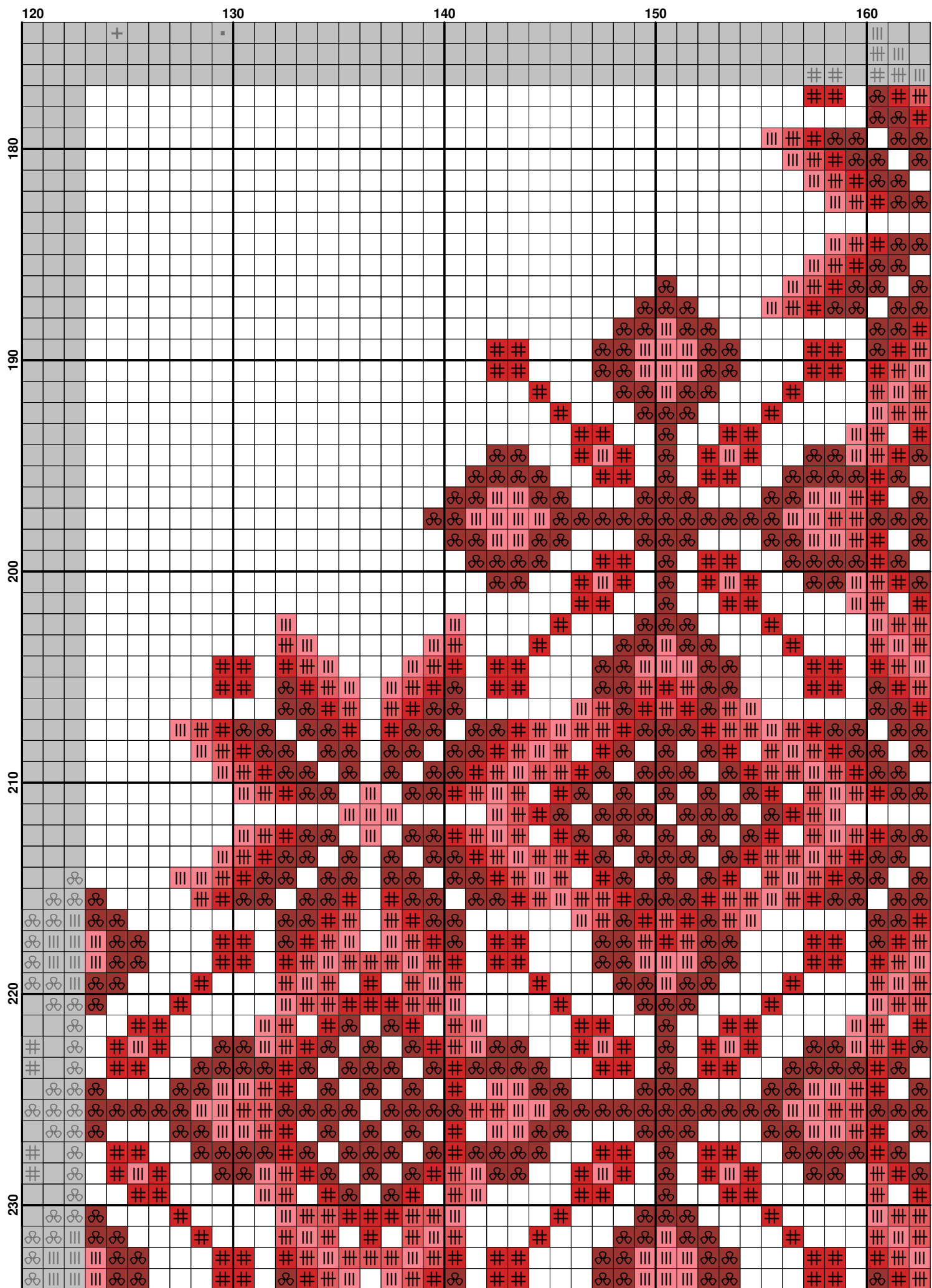












| 160 | 170 | 180 |
|-----|-----|-----|
| 160 | 170 | 180 |
| 180 | 190 | 200 |
| 200 | 210 | 220 |
| 220 | 230 | |

Fabric: Aida 14, White

187w X 234h Stitches

Size: 14 Count, 33.93w X 42.45h cm**Floss Used for Full Stitches:**

| Symbol | Strands | Type | Number | Color |
|--------|---------|------|--------|---------------------|
| | 2 | DMC | 151 | Dusty Rose-VY LT |
| | 2 | DMC | 225 | Shell Pink-UL VY LT |
| | 2 | DMC | 301 | Mahogany-MD |
| | 2 | DMC | 307 | Lemon |
| | 2 | DMC | 444 | Lemon-DK |
| | 2 | DMC | 445 | Lemon-LT |
| | 2 | DMC | 498 | Christmas Red-DK |
| | 2 | DMC | 666 | Christmas Red-BRT |
| | 2 | DMC | 741 | Tangerine-MD |
| | 2 | DMC | 743 | Yellow-MD |
| | 2 | DMC | 762 | Pearl Gray-VY LT |
| | 2 | DMC | 819 | Baby Pink-LT |
| | 2 | DMC | 907 | Parrot Green-LT |
| | 2 | DMC | 972 | Canary-DK |
| | 2 | DMC | 976 | Golden Brown-MD |
| | 2 | DMC | 977 | Golden Brown-LT |
| | 2 | DMC | 986 | Forest Green-VY DK |
| | 2 | DMC | 3023 | Brown Gray-LT |
| | 2 | DMC | 3072 | Beaver Gray-VY LT |
| | 2 | DMC | 3705 | Melon-DK |
| | 2 | DMC | 3706 | Melon-MD |
| | 2 | DMC | 3708 | Melon-LT |
| | 2 | DMC | 3756 | Baby Blue-UL VY LT |
| | 2 | DMC | 3826 | Golden Brown |
| | 2 | DMC | 3865 | Winter White |
| | 2 | DMC | Ecru | Ecru |
| | 2 | DMC | BLANC | White |