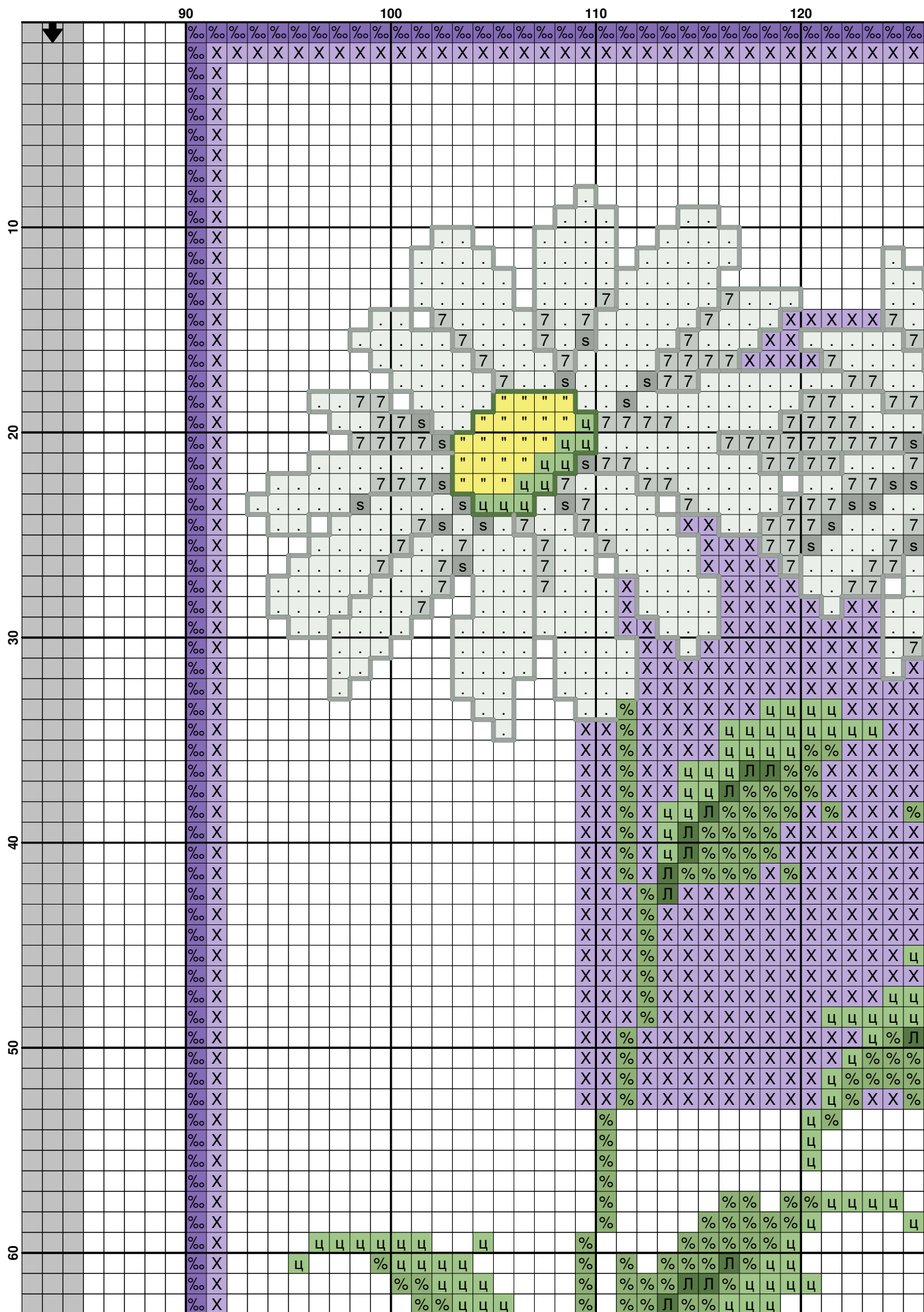
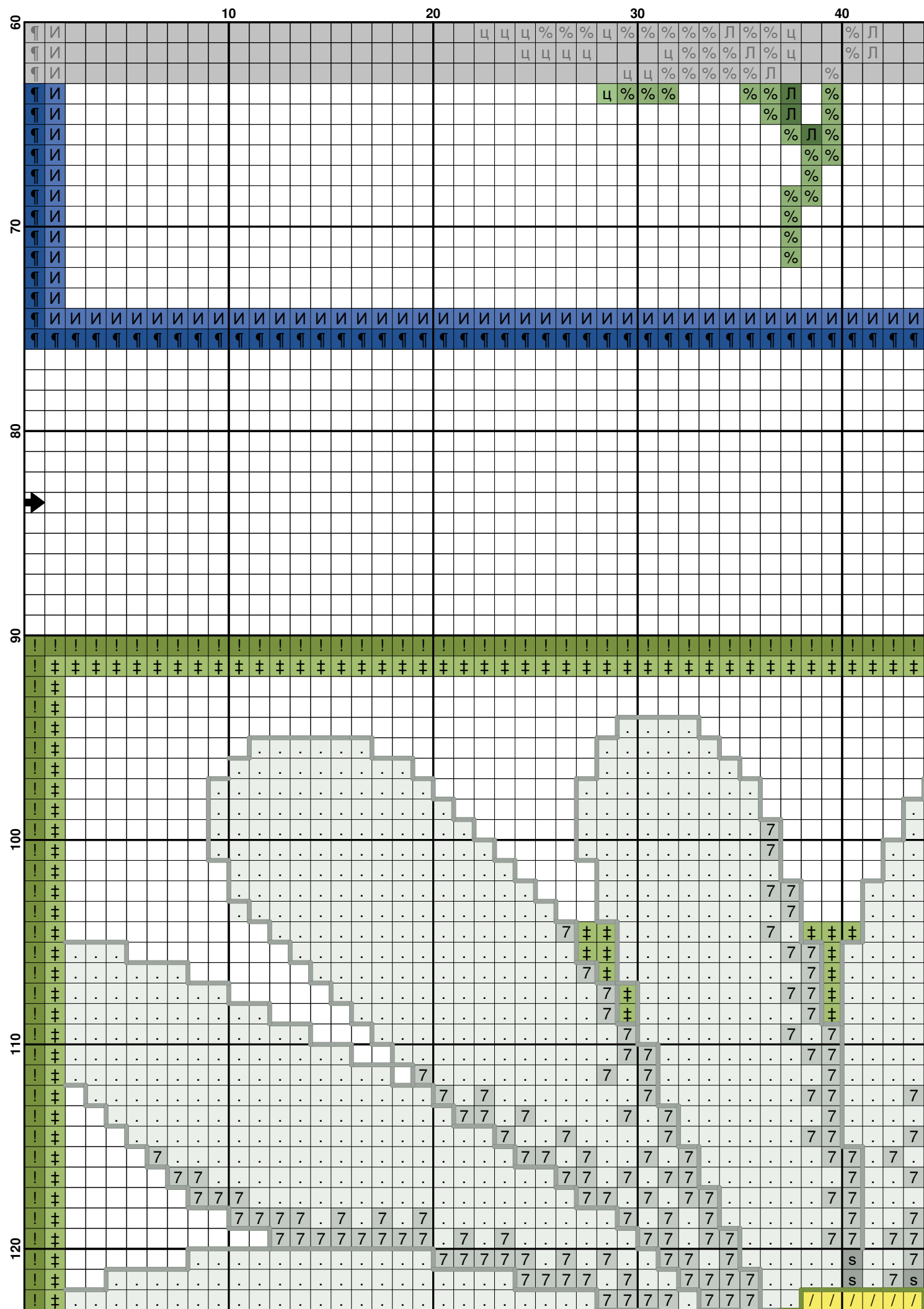


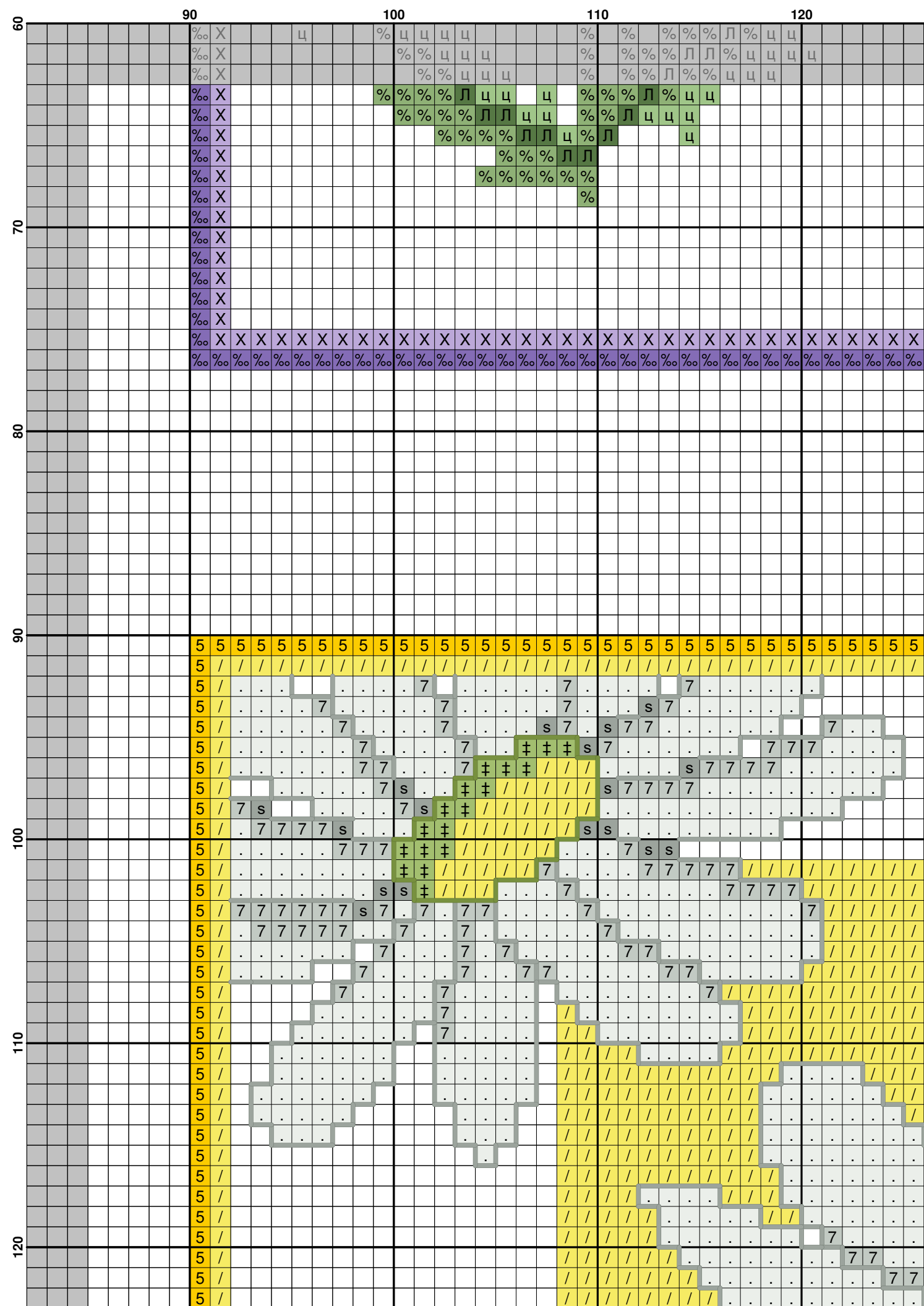
(7)



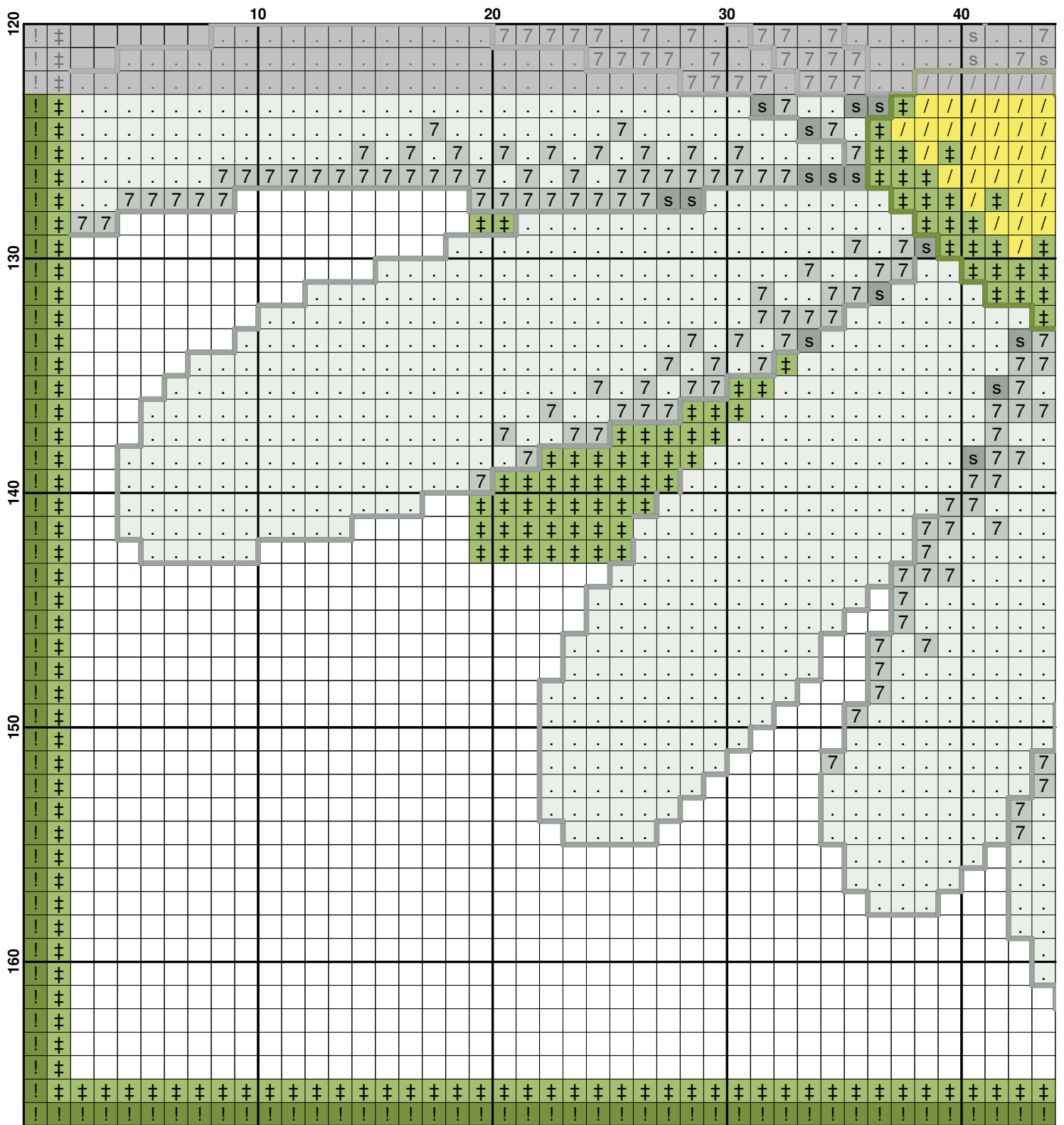
[illegible]



(11)



	130										140										150										160									
60						%															%					%									X	%				
						%															%														X	%				
						%															%														X	%				
						%															%														X	%				
						%															%														X	%				
						%															%														X	%				
						%															%														X	%				
70						%															%														X	%				
						%															%														X	%				
						%															%														X	%				
						%															%														X	%				
						%															%														X	%				
80																																					X	%		
																																					X	%		
																																					X	%		
																																					X	%		
																																					X	%		
																																					X	%		
																																					X	%		
																																					X	%		
																																					X	%		
																																					X	%		
90	X	X	X	X	X	X	X	X	X	X	X	X	X	X	X	X	X	X	X	X	X	X	X	X	X	X	X	X	X	X	X	X	X	X	X	X	%			
	%	%	%	%	%	%	%	%	%	%	%	%	%	%	%	%	%	%	%	%	%	%	%	%	%	%	%	%	%	%	%	%	%	%	%	%	%			
100	5	5	5	5	5	5	5	5	5	5	5	5	5	5	5	5	5	5	5	5	5	5	5	5	5	5	5	5	5	5	5	5	5	5	5	5				
	/	/	/	/	/	/	/	/	/	/	/	/	/	/	/	/	/	/	/	/	/	/	/	/	/	/	/	/	/	/	/	/	/	/	/	5				
																					s		7	7									/	5						
																						s	s	7			7						/	5						
	†	†	†	7								/	5					
	7	7	7	/	5		
	s	s		/	5		
																								













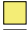




[illegible]

A 16x16 grid-based puzzle. The grid is divided into four 8x8 quadrants by a central 4x4 area. The top-left quadrant (rows 1-8, columns 1-8) contains numbers 1-7 and symbols 's' and '/'. The top-right quadrant (rows 1-8, columns 9-16) contains numbers 1-7 and symbols 's' and '/'. The bottom-left quadrant (rows 9-16, columns 1-8) contains numbers 1-7 and symbols 's' and '/'. The bottom-right quadrant (rows 9-16, columns 9-16) contains numbers 1-7 and symbols 's' and '/'. The central 4x4 area (rows 9-12, columns 9-12) contains numbers 1-7 and symbols 's' and '/'. The grid is surrounded by a border of numbers 1-7 and symbols 's' and '/'. The numbers 1-7 are placed in the grid cells, and the symbols 's' and '/' are placed in the grid cells. The grid is surrounded by a border of numbers 1-7 and symbols 's' and '/'. The numbers 1-7 are placed in the grid cells, and the symbols 's' and '/' are placed in the grid cells. The grid is surrounded by a border of numbers 1-7 and symbols 's' and '/'. The numbers 1-7 are placed in the grid cells, and the symbols 's' and '/' are placed in the grid cells.




Fabric: Aida 14, White

167w X 167h Stitches

Size: 14 Count, 30.30w X 30.30h cm**Floss Used for Full Stitches:**

Symbol	Strands	Type	Number	Color
	2	Anchor	1	Snow White
	2	Anchor	108	Lavender LT
	2	Anchor	110	Lavender Med
	2	Anchor	131	Cobalt Blue Med
	2	Anchor	132	Cobalt Blue Med DK
	2	Anchor	234	Charcoal Grey LT
	2	Anchor	240	Grass Green LT
	2	Anchor	261	Loden Green Med LT
	2	Anchor	262	Loden Green Med
	2	Anchor	265	Avocado LT
	2	Anchor	267	Avocado Med
	2	Anchor	293	Jonquil LT
	2	Anchor	295	Jonquil Med LT
	2	Anchor	298	Jonquil DK
	2	Anchor	399	Grey Med LT

Floss Used for Back Stitches:

Symbol	Strands	Type	Number	Color
	1	Anchor	262	Loden Green Med
	1	Anchor	267	Avocado Med
	1	Anchor	399	Grey Med LT