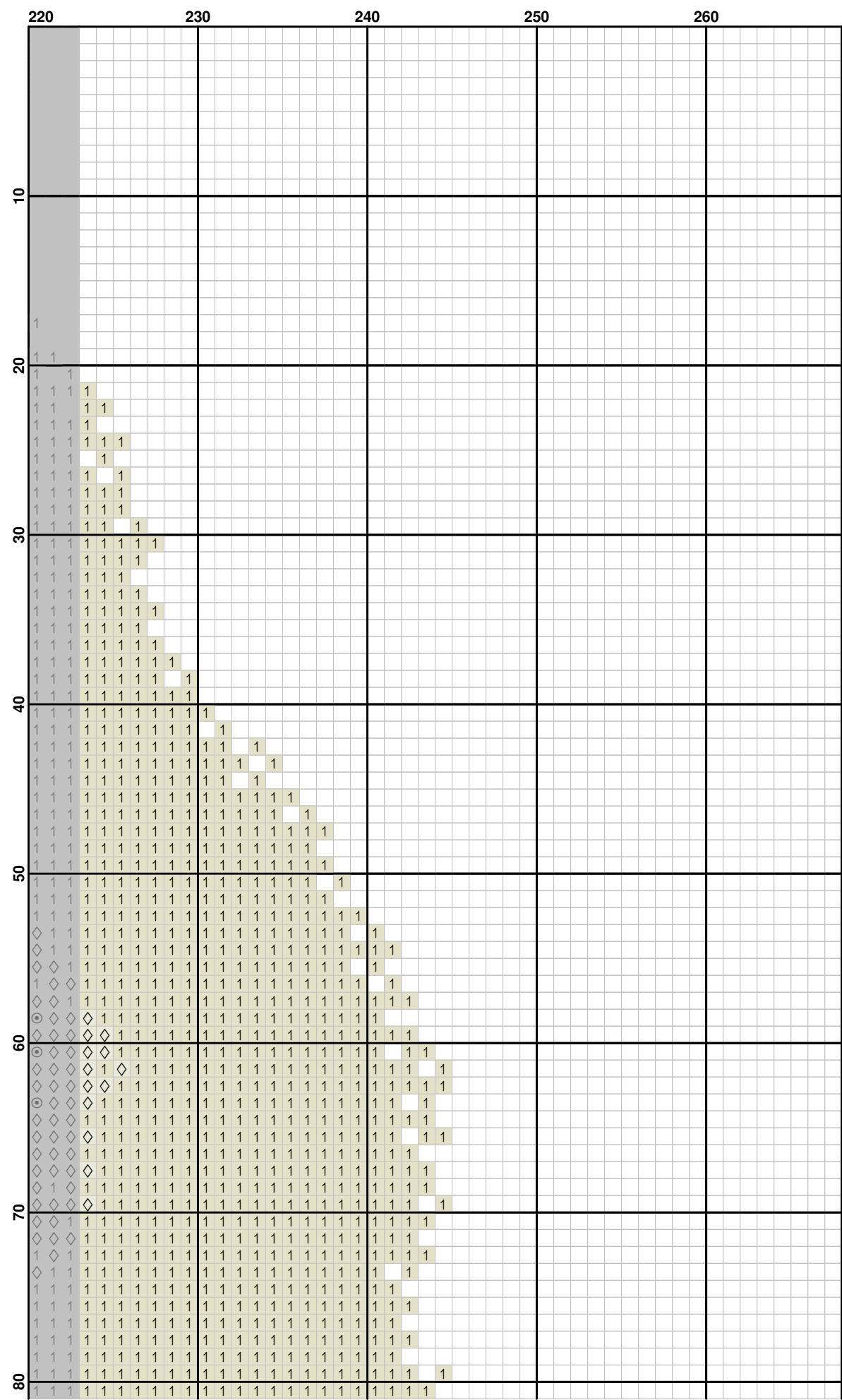
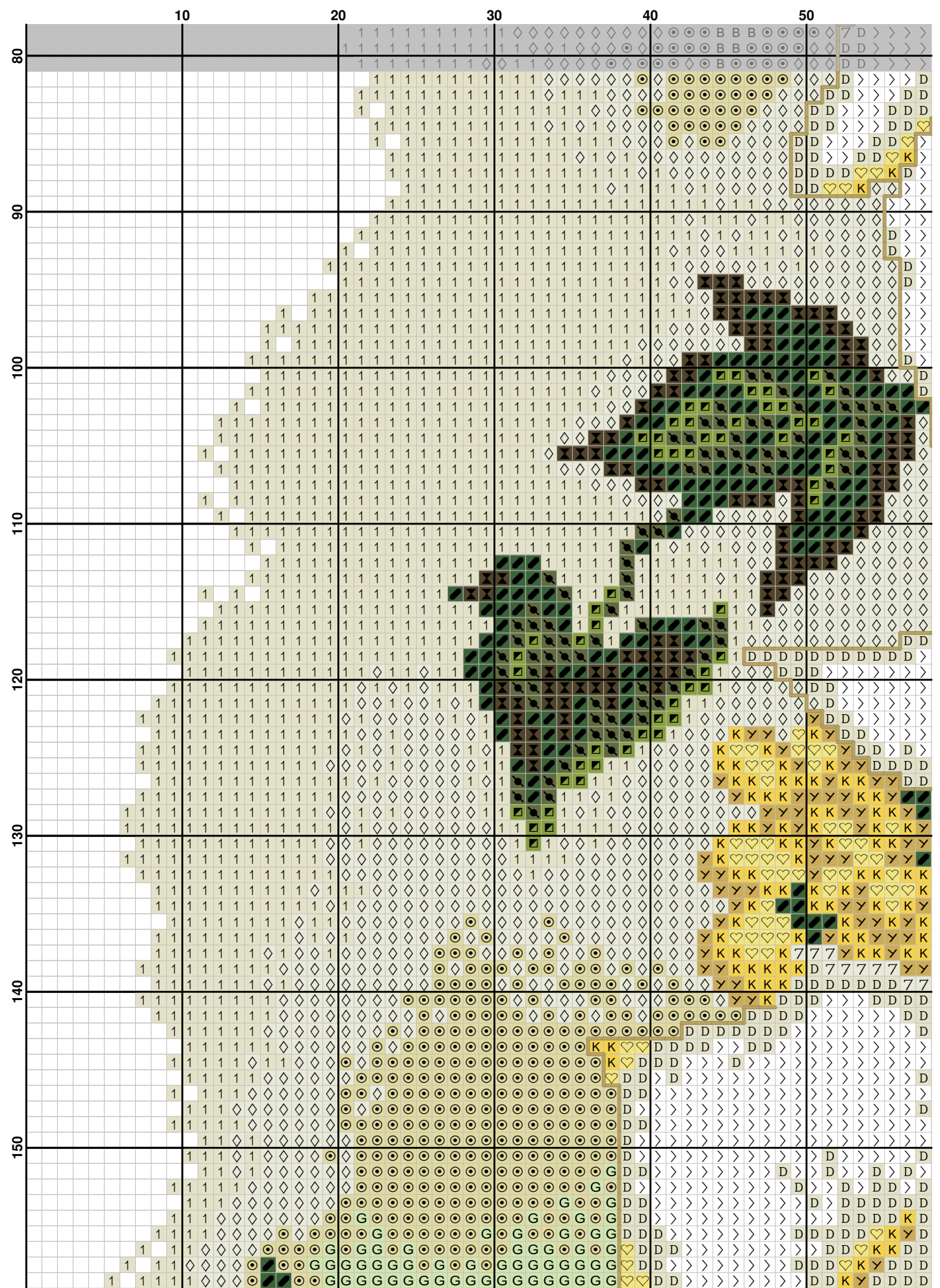
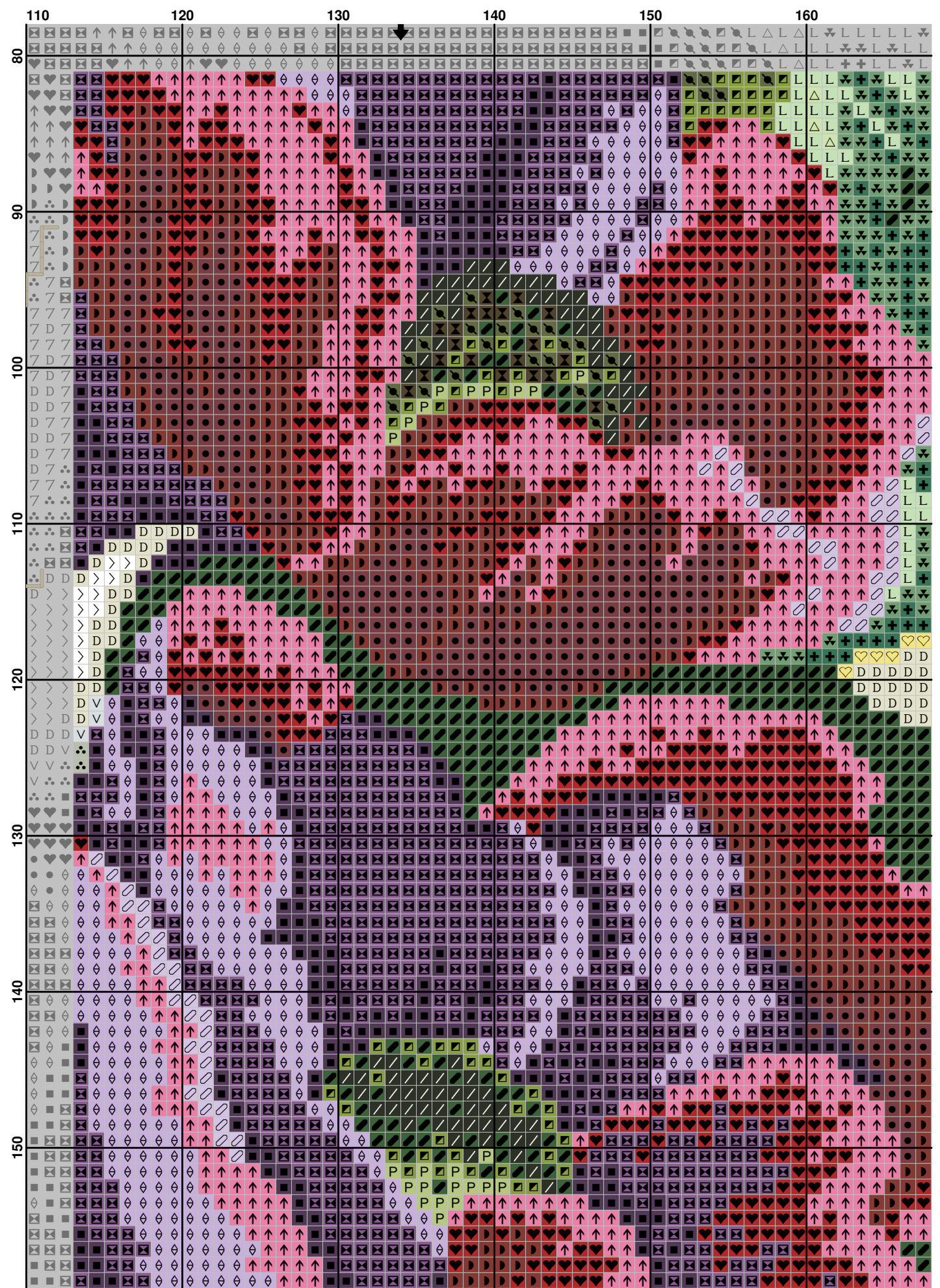


(9)





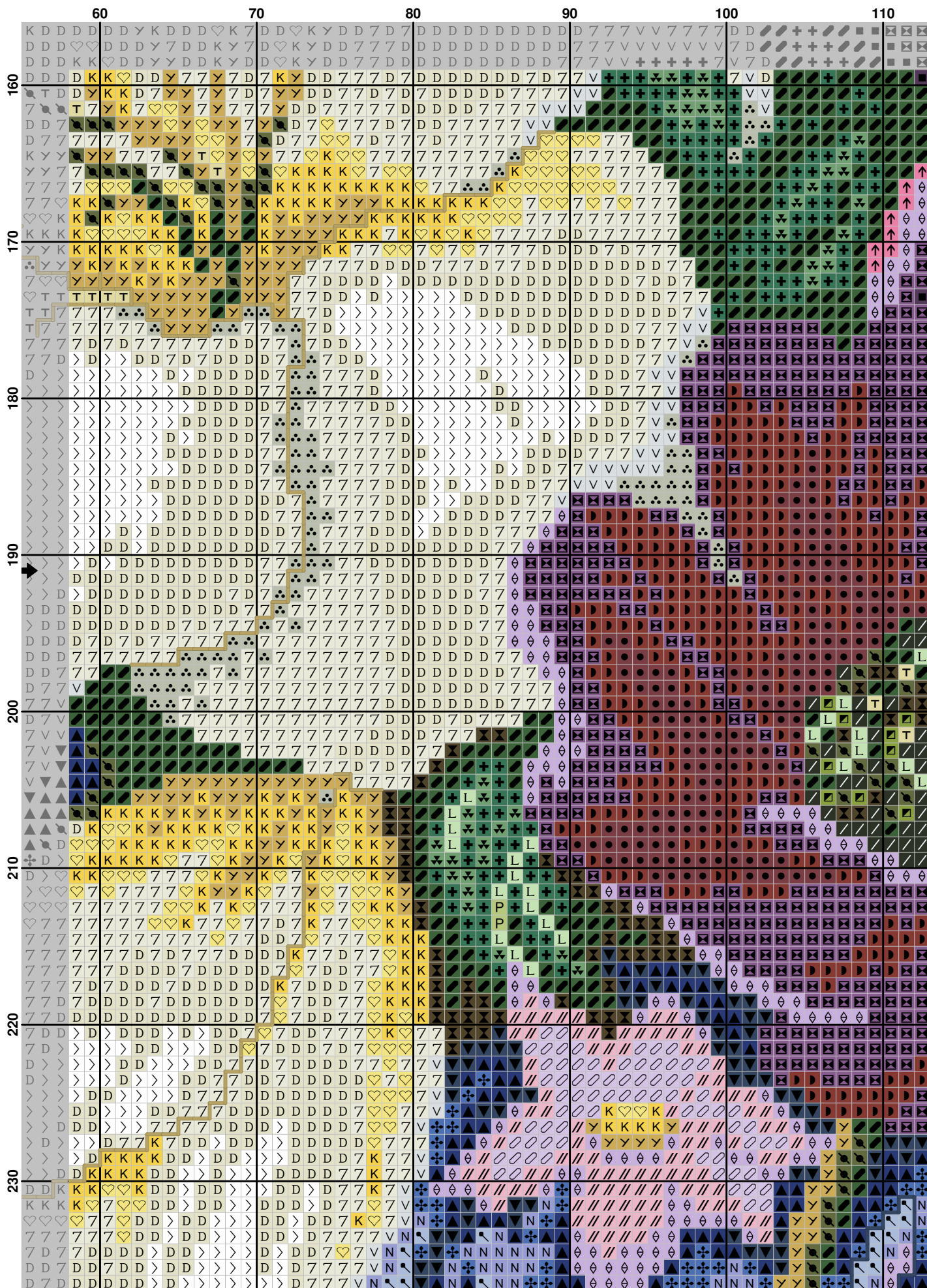
[illegible]

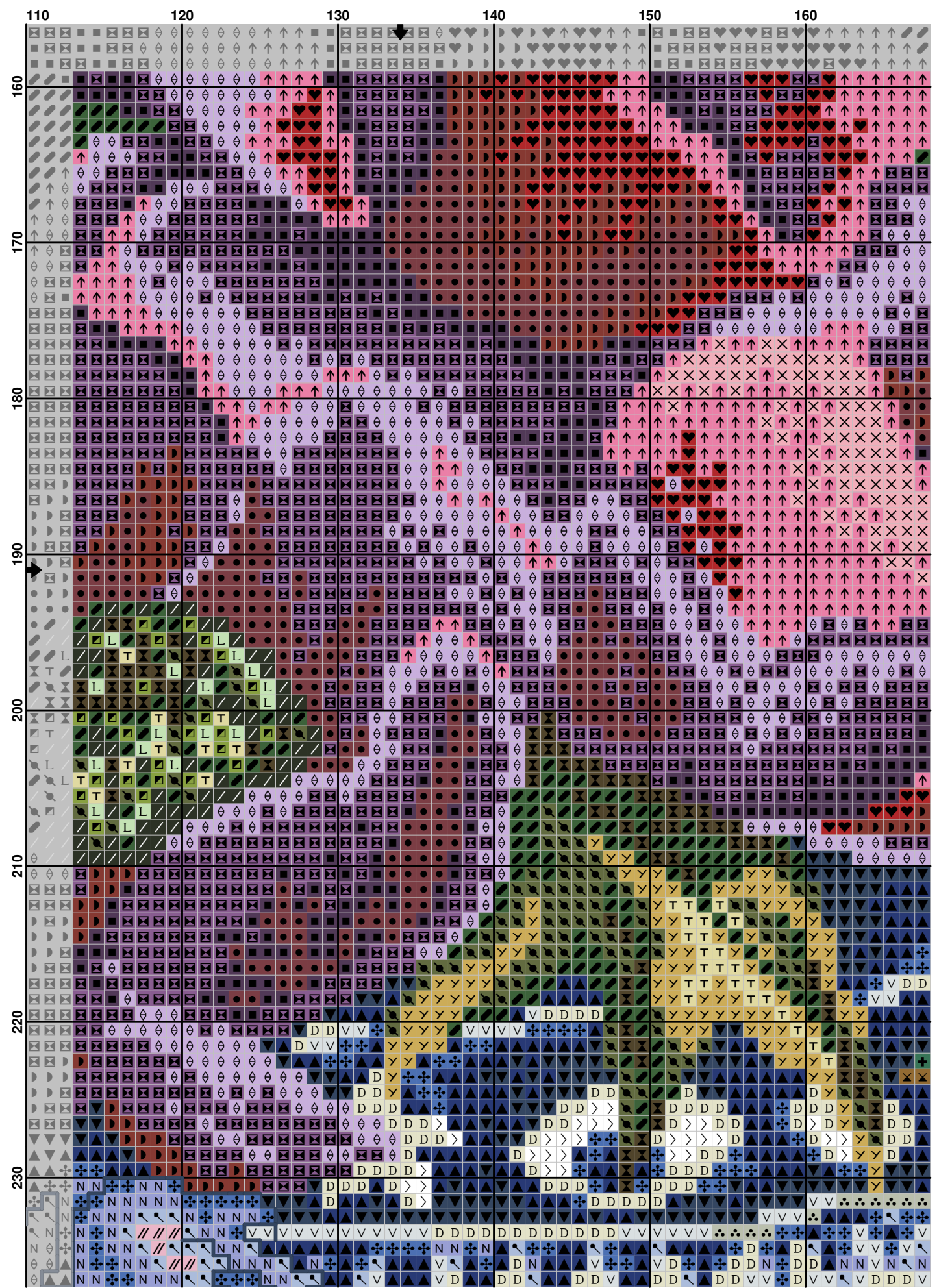


	170	180	190	200	210	220
80	L L + + +	L L + + +	L L + + +	L L + + +	L L + + +	L L + + +
90	L L + + +	L L + + +	L L + + +	L L + + +	L L + + +	L L + + +
100	L L + + +	L L + + +	L L + + +	L L + + +	L L + + +	L L + + +
110	L L + + +	L L + + +	L L + + +	L L + + +	L L + + +	L L + + +
120	L L + + +	L L + + +	L L + + +	L L + + +	L L + + +	L L + + +
130	L L + + +	L L + + +	L L + + +	L L + + +	L L + + +	L L + + +
140	L L + + +	L L + + +	L L + + +	L L + + +	L L + + +	L L + + +
150	L L + + +	L L + + +	L L + + +	L L + + +	L L + + +	L L + + +

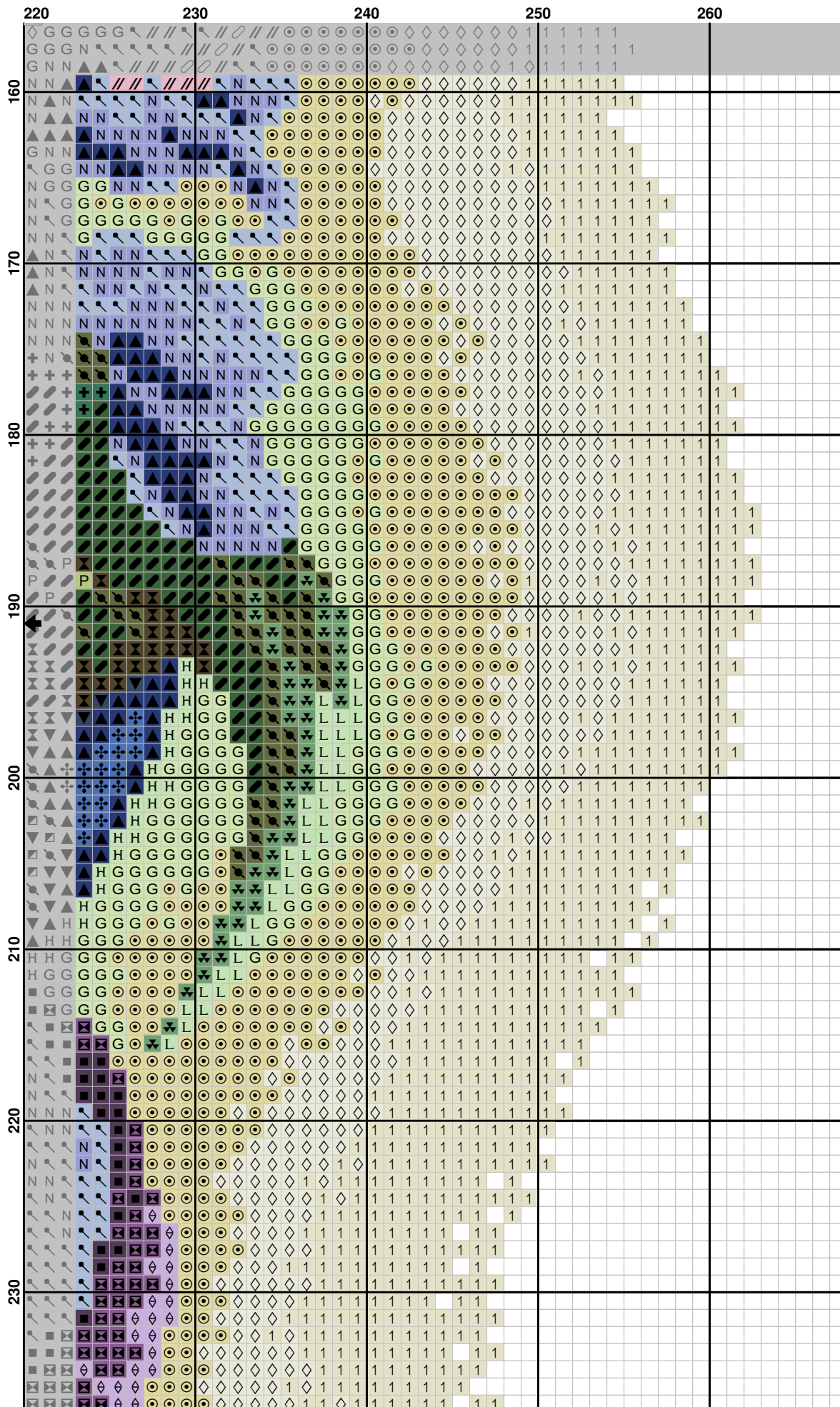
[illegible]

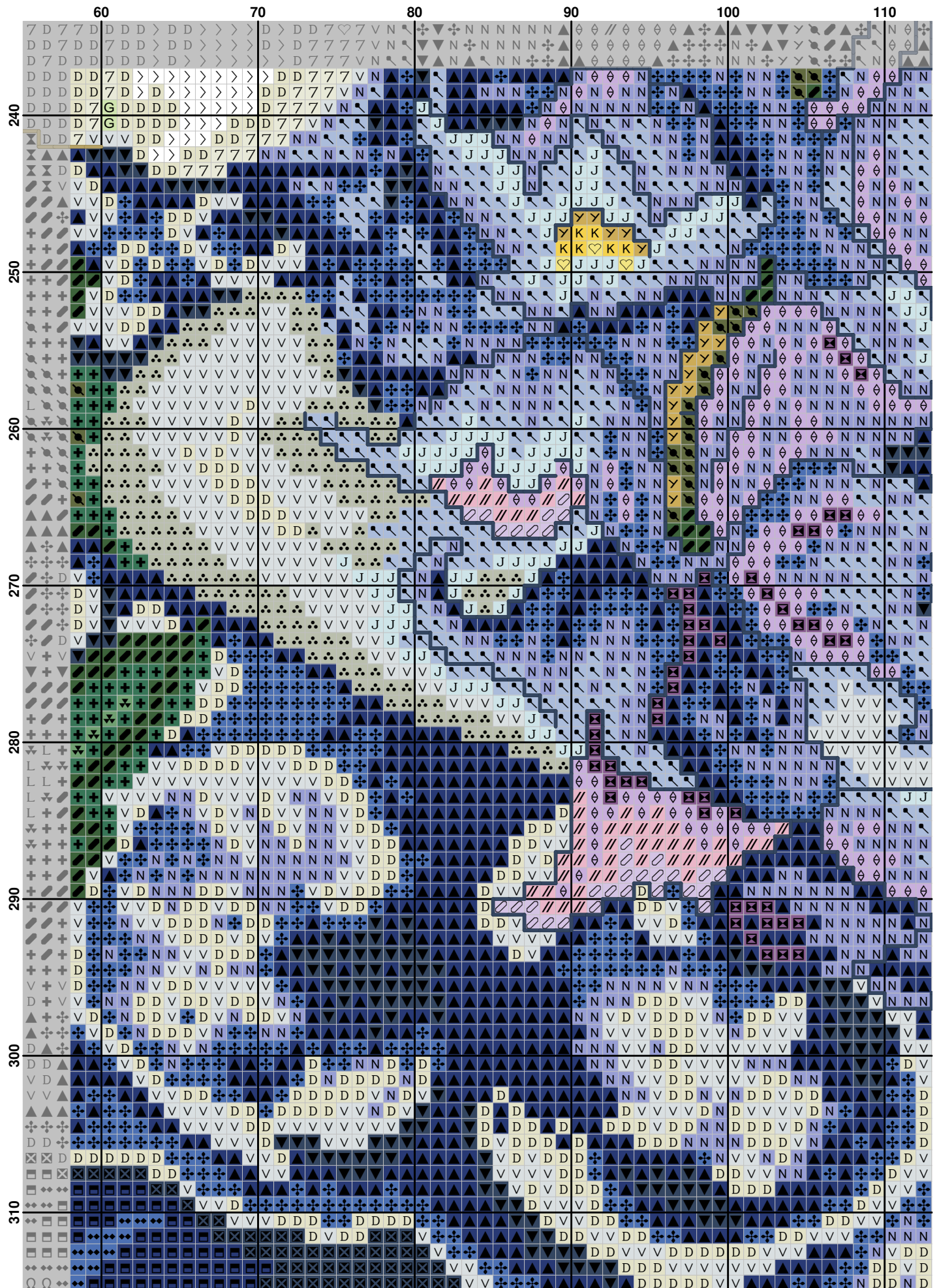
The figure displays a large grid of 100 rows and 50 columns, organized into four 25x25 quadrants. The grid is filled with various symbols and numbers, primarily in black, white, yellow, green, blue, and red. The symbols include diamonds, circles, squares, triangles, and other geometric shapes, often accompanied by numbers like 1, 10, 20, 30, 40, and 50. The pattern is highly complex and appears to be a repeating or near-repeating sequence across the grid. The grid is divided into four quadrants by a central vertical line and a central horizontal line. The top-left quadrant (rows 1-25, columns 1-25) is predominantly white with black symbols. The top-right quadrant (rows 1-25, columns 26-50) is predominantly white with black symbols. The bottom-left quadrant (rows 26-50, columns 1-25) is predominantly white with black symbols. The bottom-right quadrant (rows 26-50, columns 26-50) is predominantly white with black symbols. The grid is labeled with row numbers 160, 170, 180, 190, 200, 210, 220, and 230 on the left side, and column numbers 10, 20, 30, 40, and 50 on the top side.



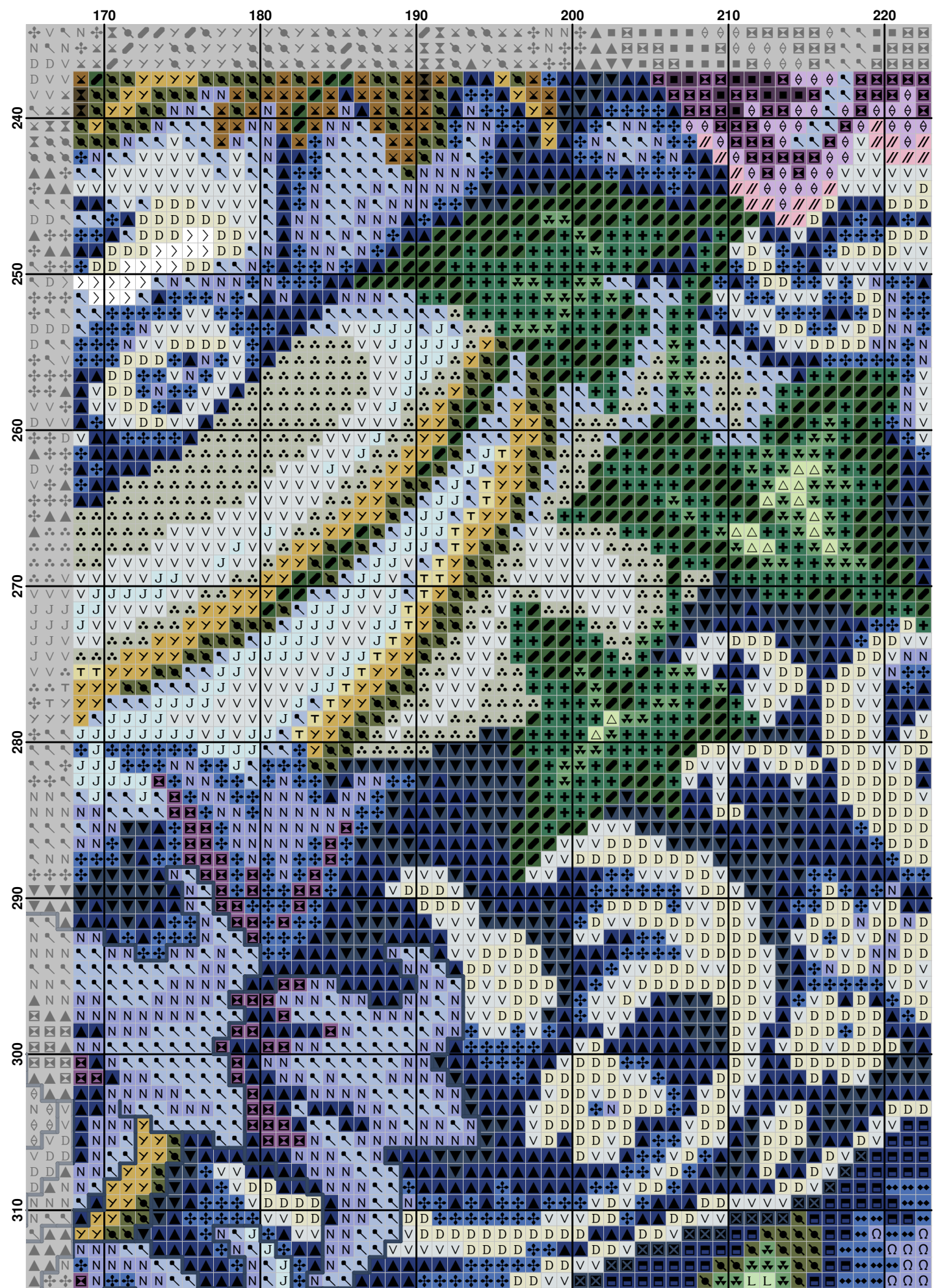




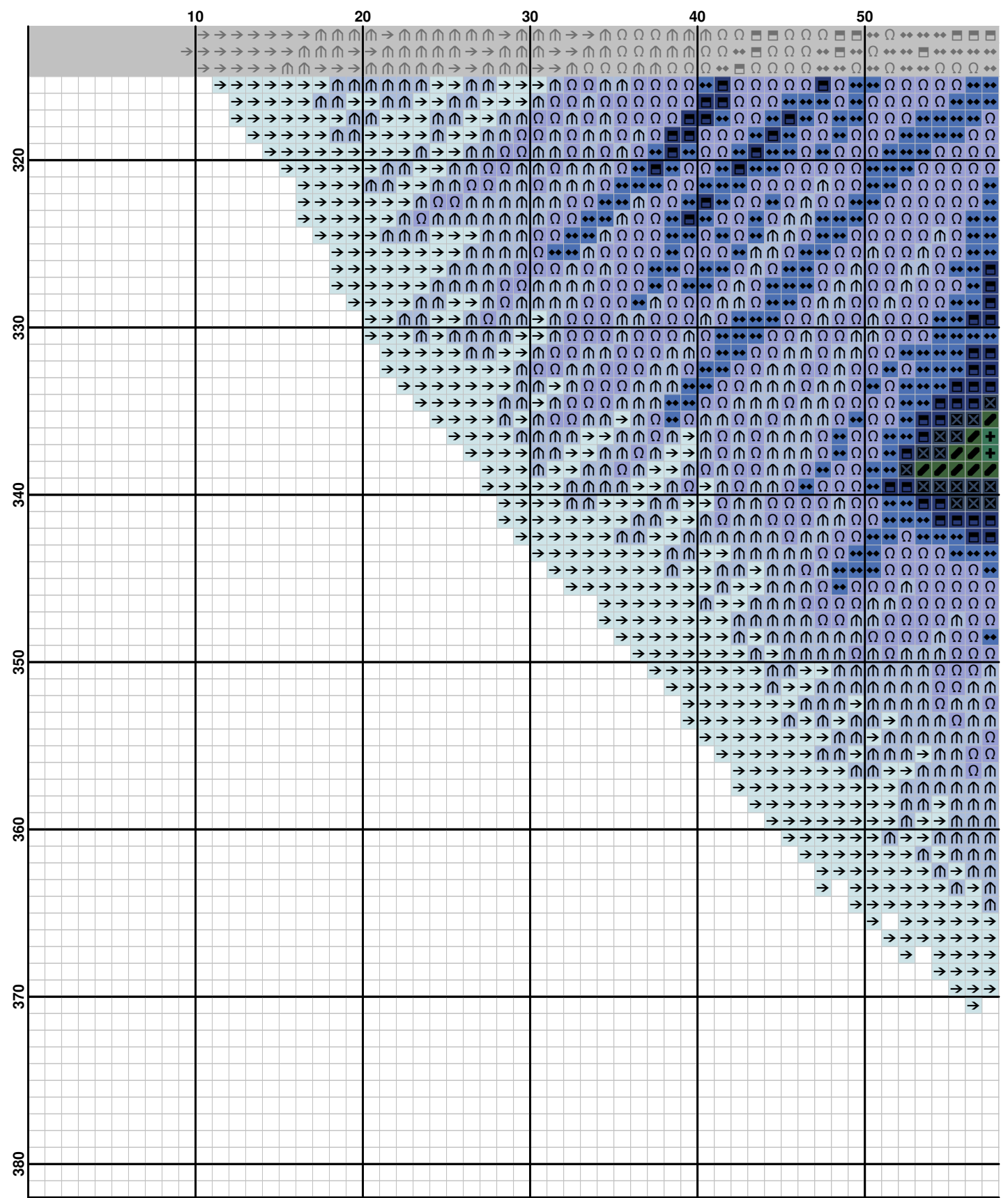


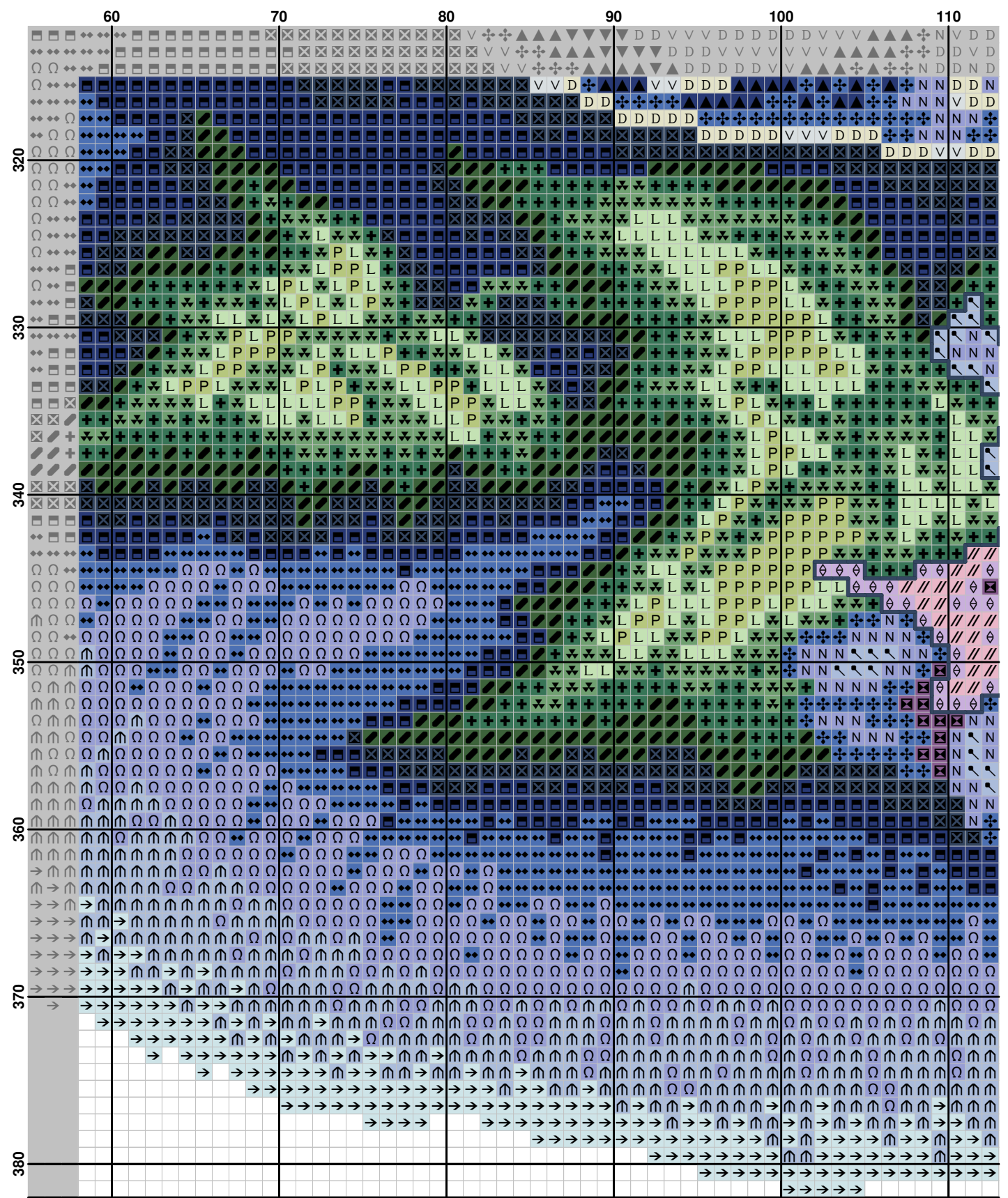


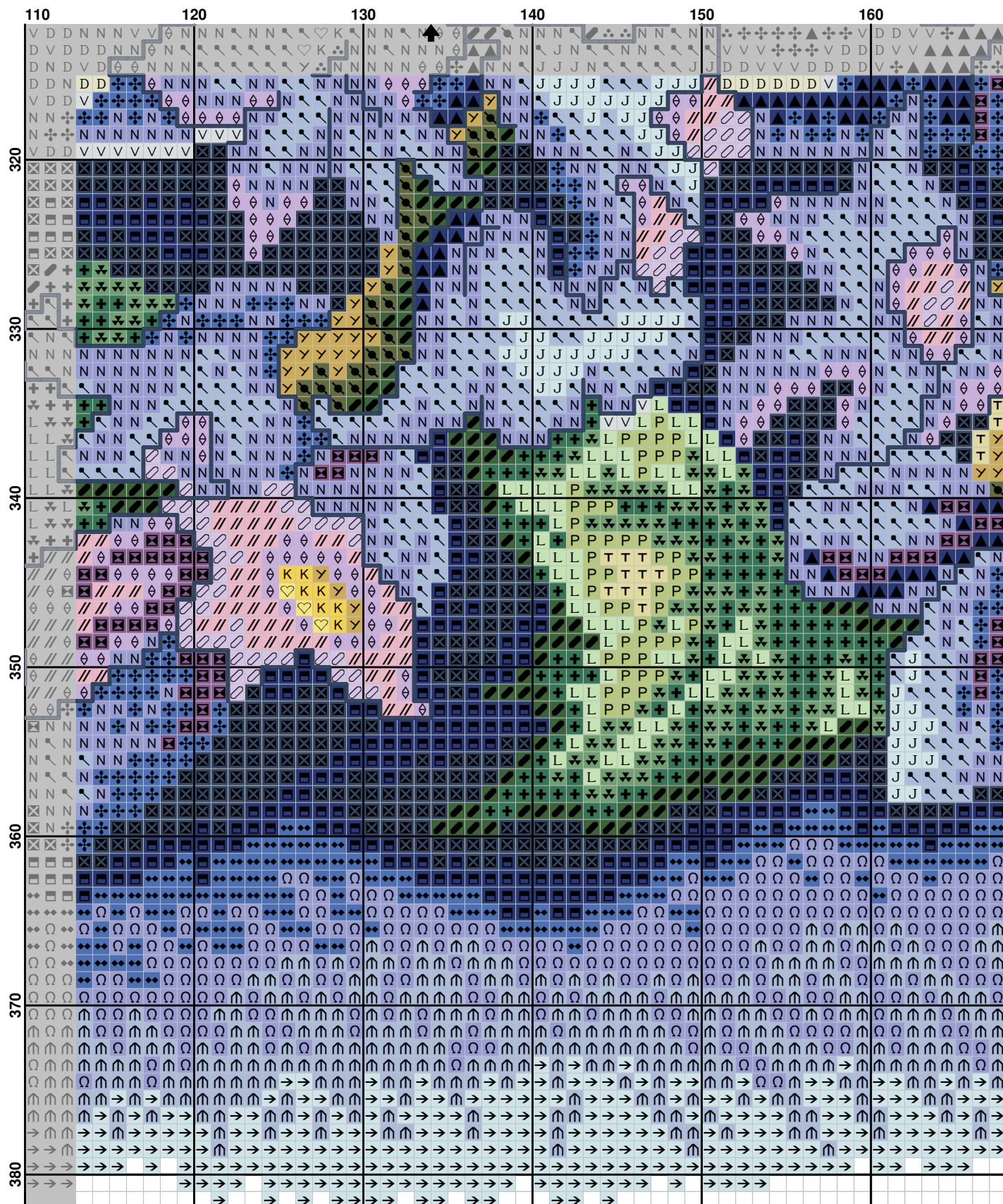


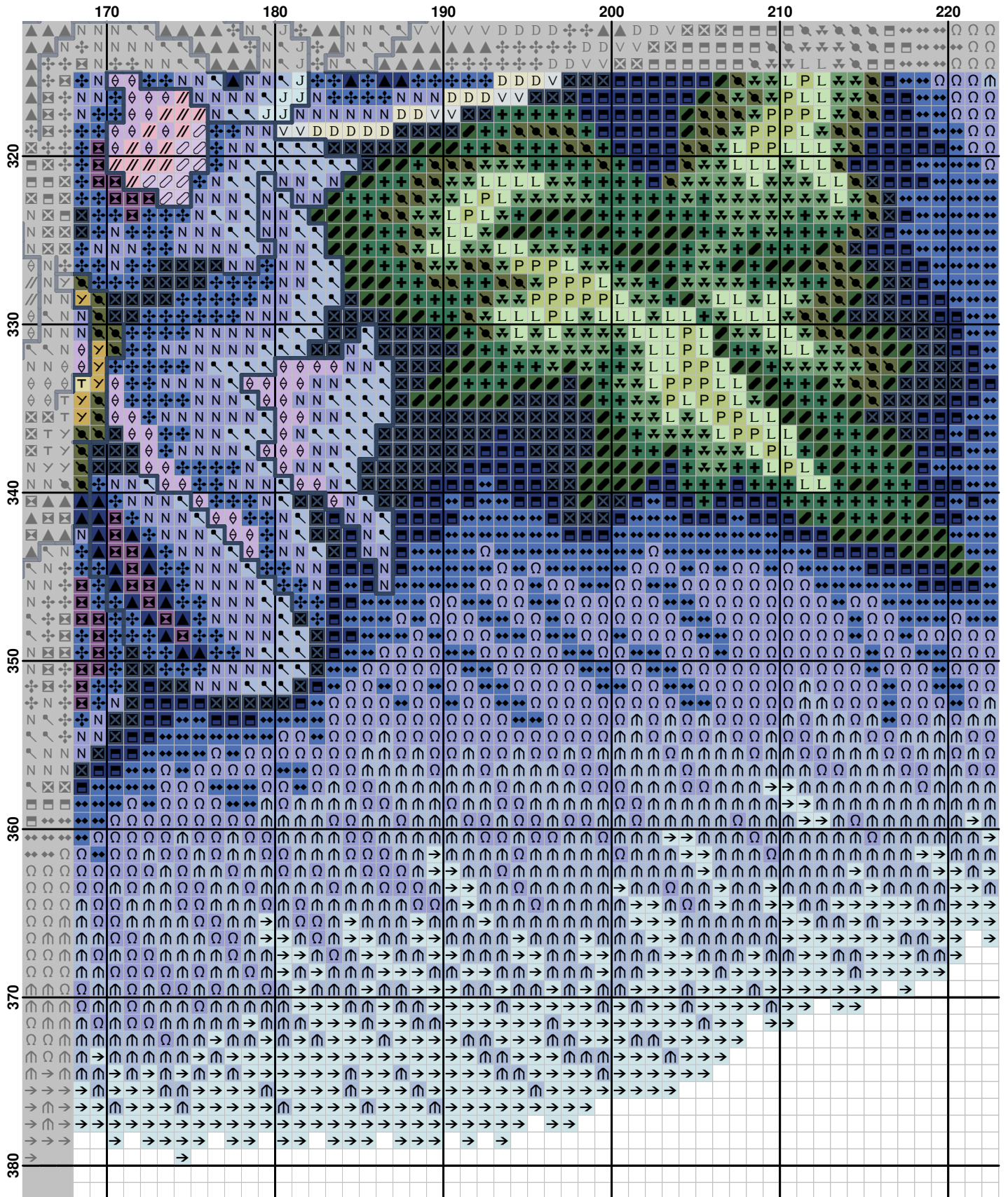


	220	230	240	250	260
240	<div> </div>	<div> </div>	<div> </div>	<div> </div>	<div> </div>
250	<div> </div>	<div> </div>	<div> </div>	<div> </div>	<div> </div>
260	<div> </div>	<div> </div>	<div> </div>	<div> </div>	<div> </div>
270	<div> </div>	<div> </div>	<div> </div>	<div> </div>	<div> </div>
280	<div> </div>	<div> </div>	<div> </div>	<div> </div>	<div> </div>
290	<div> </div>	<div> </div>	<div> </div>	<div> </div>	<div> </div>
300	<div> </div>	<div> </div>	<div> </div>	<div> </div>	<div> </div>
310	<div> </div>	<div> </div>	<div> </div>	<div> </div>	<div> </div>









[illegible]

Fabric: Aida 14, White
268w X 382h Stitches
Size: 14 Count, 48.62w X 69.31h cm

Floss Used for Full Stitches:

Symbol	Strands	Type	Number	Color
	2	DMC	1	White. E6149
	2	DMC	210	Lavender-MD. E6138
	2	DMC	211	Lavender-LT. E6257
	2	DMC	310	Black. E6150
	2	DMC	320	Pistachio Green-MD. E6050
	2	DMC	321	Christmas Red. E6267
	2	DMC	336	Navy Blue. E6012
	2	DMC	340	Blue Violet-MD. E6250
	2	DMC	341	Blue Violet-LT. E6266
	2	DMC	369	Pistachio Green-VY LT. E6052
	2	DMC	434	Brown-LT. E6095
	2	DMC	470	Avocado Green-LT. E6072
	2	DMC	550	Violet-VY DK. E6315
	2	DMC	552	Violet-MD. E6137
	2	DMC	561	Jade-VY DK. E6075
	2	DMC	603	Cranberry. E6281
	2	DMC	648	Beaver Gray-LT. E6238
	2	DMC	677	Old Gold-VY LT. E6248
	2	DMC	712	Cream. E6275
	2	DMC	725	Topaz. E6127
	2	DMC	729	Old Gold-MD. E6228
	2	DMC	744	Yellow-Pale. E6295
	2	DMC	762	Pearl Gray-VY LT. E6082
	2	DMC	772	Yellow Green-VY LT. E6219
	2	DMC	775	Baby Blue-VY LT. E6006
	2	DMC	798	Delft Blue-DK. E6244
	2	DMC	815	Garnet-MD. E6019
	2	DMC	820	Royal Blue-VY DK. E6007
	2	DMC	822	Beige Gray-LT. E6255
	2	DMC	895	Hunter Green-VY DK. E6065
	2	DMC	938	Coffee Brown-UL DK. E6199
	2	DMC	3051	Green Gray-DK. E6181
	2	DMC	3348	Yellow Green-LT. E6074
	2	DMC	3685	Mauve-DK. E6166
	2	DMC	3689	Mauve-LT. E6322
	2	DMC	3716	Dusty Rose-VY LT. E6026

Floss Used for Half Stitches:

Symbol	Strands	Type	Number	Color
	2	DMC	336	Navy Blue. E6012
	2	DMC	340	Blue Violet-MD. E6250
	2	DMC	341	Blue Violet-LT. E6266
	2	DMC	369	Pistachio Green-VY LT. E6052
	2	DMC	677	Old Gold-VY LT. E6248
	2	DMC	712	Cream. E6275
	2	DMC	772	Yellow Green-VY LT. E6219
	2	DMC	775	Baby Blue-VY LT. E6006
	2	DMC	798	Delft Blue-DK. E6244
	2	DMC	820	Royal Blue-VY DK. E6007
	2	DMC	822	Beige Gray-LT. E6255
	2	DMC	3348	Yellow Green-LT. E6074

Floss Used for Back Stitches:

Symbol	Strands	Type	Number	Color
	1	DMC	336	Navy Blue. E6012 Голубые цветы
	1	DMC	3045	Yellow Beige-DK. E6203 Лилии и белые анемоны

Usage Summary**Strands Per Skein:** 6**Skein Length:** 795.0 cm

Type	Number	Full	Half	Quarter	Petite	Back(cm)	Str(cm)	Spec(cm)	French	Bead	Skein Est.
DMC 1	3912	0	0	0	0	0.0	0.0	0.0	0	0	2.000
DMC 210	1934	0	0	0	0	0.0	0.0	0.0	0	0	1.000
DMC 211	330	0	0	0	0	0.0	0.0	0.0	0	0	1.000
DMC 310	201	0	0	0	0	0.0	0.0	0.0	0	0	1.000
DMC 320	1474	0	0	0	0	0.0	0.0	0.0	0	0	1.000
DMC 321	946	0	0	0	0	0.0	0.0	0.0	0	0	1.000
DMC 336	1095	0	0	0	0	142.4	0.0	0.0	0	0	1.000
DMC 336	0	987	0	0	0	0.0	0.0	0.0	0	0	1.000
DMC 340	3091	0	0	0	0	0.0	0.0	0.0	0	0	2.000
DMC 340	0	2650	0	0	0	0.0	0.0	0.0	0	0	1.000
DMC 341	2115	0	0	0	0	0.0	0.0	0.0	0	0	1.000
DMC 341	0	2856	0	0	0	0.0	0.0	0.0	0	0	1.000
DMC 369	1074	0	0	0	0	0.0	0.0	0.0	0	0	1.000
DMC 369	0	443	0	0	0	0.0	0.0	0.0	0	0	1.000
DMC 434	248	0	0	0	0	0.0	0.0	0.0	0	0	1.000
DMC 470	398	0	0	0	0	0.0	0.0	0.0	0	0	1.000
DMC 550	986	0	0	0	0	0.0	0.0	0.0	0	0	1.000
DMC 552	3138	0	0	0	0	0.0	0.0	0.0	0	0	2.000
DMC 561	2160	0	0	0	0	0.0	0.0	0.0	0	0	1.000
DMC 603	1199	0	0	0	0	0.0	0.0	0.0	0	0	1.000
DMC 648	878	0	0	0	0	0.0	0.0	0.0	0	0	1.000
DMC 677	201	0	0	0	0	0.0	0.0	0.0	0	0	1.000
DMC 677	0	3078	0	0	0	0.0	0.0	0.0	0	0	1.000
DMC 712	2444	0	0	0	0	0.0	0.0	0.0	0	0	2.000
DMC 712	0	4036	0	0	0	0.0	0.0	0.0	0	0	1.000
DMC 725	929	0	0	0	0	0.0	0.0	0.0	0	0	1.000
DMC 729	1472	0	0	0	0	0.0	0.0	0.0	0	0	1.000
DMC 744	1006	0	0	0	0	0.0	0.0	0.0	0	0	1.000
DMC 762	2631	0	0	0	0	0.0	0.0	0.0	0	0	2.000
DMC 772	231	0	0	0	0	0.0	0.0	0.0	0	0	1.000
DMC 772	0	1629	0	0	0	0.0	0.0	0.0	0	0	1.000
DMC 775	501	0	0	0	0	0.0	0.0	0.0	0	0	1.000
DMC 775	0	2025	0	0	0	0.0	0.0	0.0	0	0	1.000
DMC 798	2905	0	0	0	0	0.0	0.0	0.0	0	0	2.000
DMC 798	0	1625	0	0	0	0.0	0.0	0.0	0	0	1.000
DMC 815	1108	0	0	0	0	0.0	0.0	0.0	0	0	1.000
DMC 820	3235	0	0	0	0	0.0	0.0	0.0	0	0	2.000
DMC 820	0	1287	0	0	0	0.0	0.0	0.0	0	0	1.000
DMC 822	6375	0	0	0	0	0.0	0.0	0.0	0	0	3.000
DMC 822	0	8726	0	0	0	0.0	0.0	0.0	0	0	2.000
DMC 895	3358	0	0	0	0	0.0	0.0	0.0	0	0	2.000
DMC 938	947	0	0	0	0	0.0	0.0	0.0	0	0	1.000
DMC 3045	0	0	0	0	0	133.7	0.0	0.0	0	0	1.000
DMC 3051	1467	0	0	0	0	0.0	0.0	0.0	0	0	1.000
DMC 3348	285	0	0	0	0	0.0	0.0	0.0	0	0	1.000
DMC 3348	0	417	0	0	0	0.0	0.0	0.0	0	0	1.000
DMC 3685	859	0	0	0	0	0.0	0.0	0.0	0	0	1.000
DMC 3689	450	0	0	0	0	0.0	0.0	0.0	0	0	1.000
DMC 3716	94	0	0	0	0	0.0	0.0	0.0	0	0	1.000