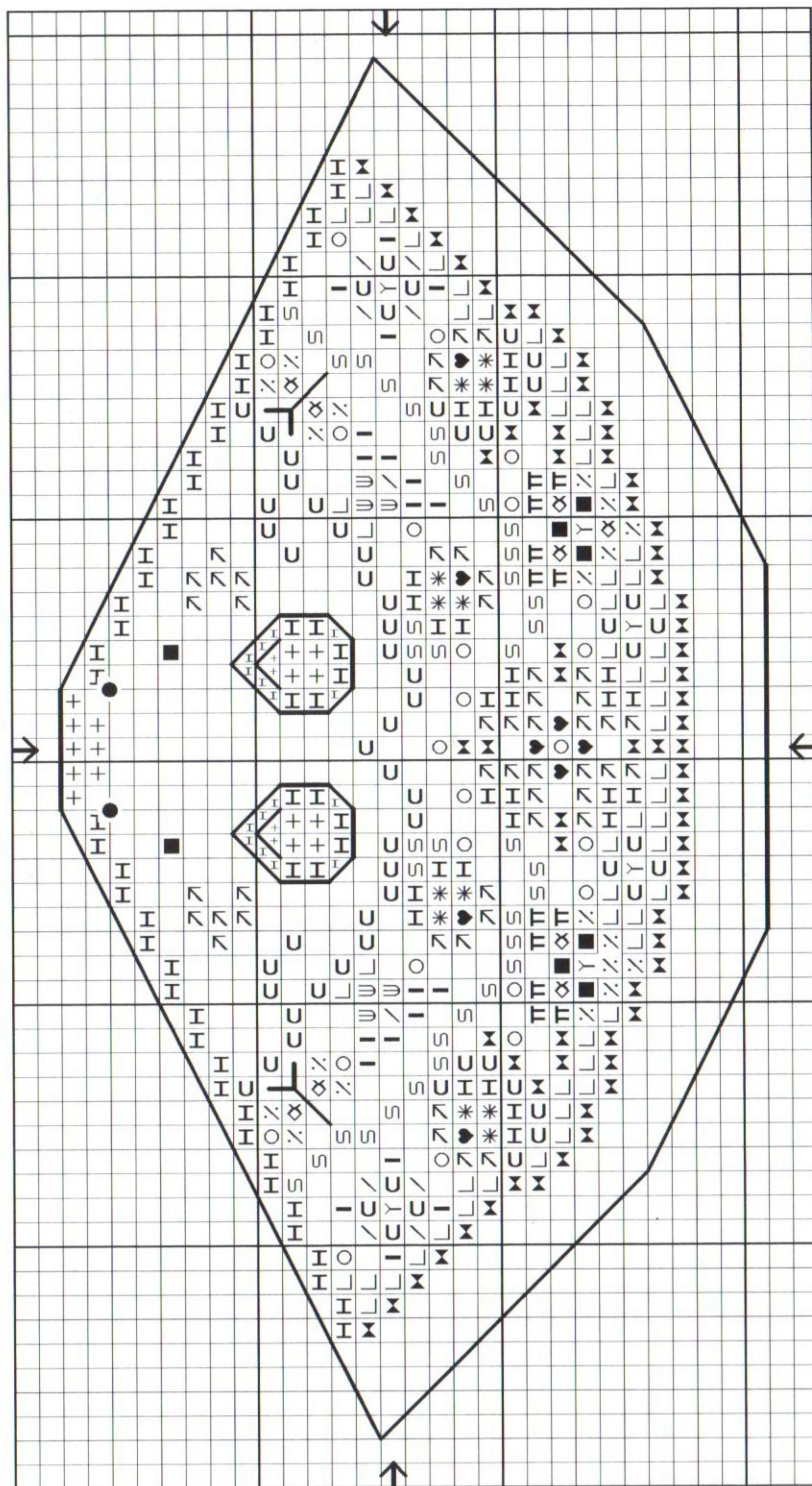


# Just Nan Queen of the Needle Mouse



Limited Edition Ornament



©2019 Just Nan, Inc. By Nan Caldera  
All Rights Reserved

Each square on the graph equals 2 threads of fabric

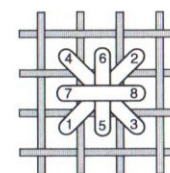
SYMBOL	DMC
C	B5200
+	151
TT	209
α	210
■	310
U	930
I	932
♥	3350 Smyrna Cross
H	3354
⌘	3362
S	3363
L	3364
*	3731
↗	3733
/	3752
∕	3837
Y	3854
SYMBOL	EMBELLISHMENTS
○	White Pearl Bead
FABRIC: 32 CT WEEKS CHARLOTTE'S PINK LINEN	
DESIGN AREA: 29H X 57W • 2" X 3½" on 32 count	

**Instructions:** Center design on the linen. Work all cross stitches over 2 threads of linen using 2 strands of floss. Dots on either side of nose are for whiskers.

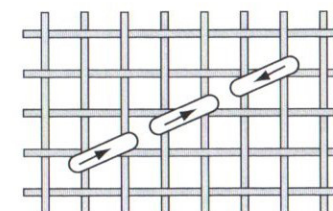
**Backstitching (1 strand):** Top of inner ear with 151; outer ear outline with 3733; lines in the butterflies with 310. Backstitch the border with 2 strands of 3354.

**Smyrna Cross:** Use 2 strands of 310 for the eyes and 2 strands of 3350 for the heart symbol.

**Beads:** Attach with a beading needle and 1 strand of 151. Go through each bead twice.



Smyrna Cross



Straight edge backstitching  
for border



<b>QUEEN OF THE NEEDLE MOUSE MATERIALS LIST</b>	
<b>DMC</b>	
B5200	
151	
209	
210	
310	
930	
932	
3350	
3354	
3362	
3363	
3364	
3731	
3733	
3752	
3837	
3854	
<b>FABRIC: 32 CT WEEKS CHARLOTTE'S PINK LINEN</b>	
<b>DESIGN AREA: 29H X 57W • 2" X 3½" on 32 count</b>	

**Included:**

Gold hanger for the tail  
 Ant. brass button for base  
 White pearl beads & 1 Pink Pearl  
 Gold Crown bead  
 Gold Needle

**Materials needed:**

Polyfil or cotton balls to stuff the mouse  
 Straight pin to attach crown

*Shown with Still Queen of the Needle Octagonal Cube  
 Available separately*



JNLEQNM



**Queen of the Needle Mouse Finishing Instructions**

1. Gently press stitched fabric on the wrong side, cushioning the design with thick towels.
2. Measure out 3/8" on the straight edges of the design and 1/2" along the curved bottom. Lightly mark the lines with pencil; cut along the lines. You will turn these seam margins to the inside as you construct the mouse.
3. Finger-press the straight edge margins to the inside. Wrong sides together, slip stitch the straight edges together using 1 strand of 3354 to join the backstitches. Begin at the bottom and join opposing backstitches. End off into the seam.
4. Turn the bottom margin to the inside along the backstitched line. Use 2 long (24") strands of 3354 to gather this bottom edge. Secure your thread at the seam. Using the backstitches as a guide, take small gathering stitches through the folded-over seam margin all around. Do not end your thread yet, you will use it for all the final steps.
5. Stuff the mouse with polyfil or cotton balls, making sure stuffing reaches into the nose.
6. Pull on the gathering stitches to close the bottom, making sure that the gathers are evenly distributed. There will be a small opening. Secure the thread at the seam. Do not end off.
7. Weave your needle around to the midpoint of the mouse's back (center of large flower). Insert the small curled edge of the tail hanger into the opening at this middle point. Overcast the tail to the gathered edge of the linen.
8. Center the antique brass fairy button over the opening. Use the remaining thread in your needle to overcast the edge of the button to the gathered linen. End off. The button covers the opening and provides a weighted base for the mouse.
9. Your mouse needs whiskers! Thread 2 strands of white heavy-weight sewing thread in your needle. Use the dots on the graph as a guide. Go in on one side, out on the other, leaving 1/2" of thread showing on each side. Snip and repeat. Trim if necessary. Use a toothpick to add the tiniest bit of clear tacky glue on each side to hold the whiskers in place.
10. Add the finishing touches. Attach the crown to the Queen's head with a straight pin. Secure the crown to the linen with a tiny amount of clear tacky glue. Use a bit more of clear tacky glue to add a pink pearl to the top of the straight pin. Thread the gold needle with 2 strands of floss in color of your choice (I used 209.) Knot the thread at the eye of the needle and glue the knot in place. Refer to the photo to insert the needle in and out of the seam at a slight angle. Trim the thread. The Queen is ready to sit on the Still Queen of the Needle octagonal cube (available separately) to command all the stitches in her garden.