

Just Nan

# Summer Mouse in a House



Limited Edition 2017 • Featuring Miss Strawberry Mouse

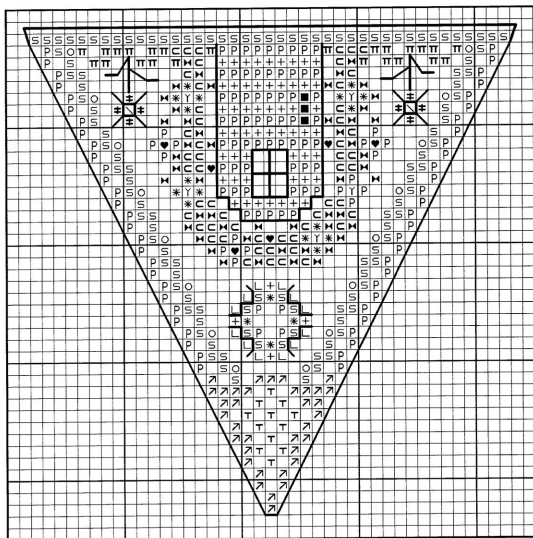
SYMBOL	DMC
C	B5200
Z	208
±	209
►	210
⌈	211
■	310
♣	326
>>	335
T	645
7	647
None	648
TT	704
≠	931
H	932
α	3326
⌘	3345
S	3346
L	3347
♥	3685
*	3687
P	3688
+	3689
∕	3752
\	3854
Y	3855
II	3862
SYMBOL	EMBELLISHMENTS
○	Blueberry Bead
2	Swarovski Crystal Dewdrop Bead
<b>FABRIC (HOUSE): 32 CT Weeks Dye Works Platinum Linen</b> <b>TOTAL AREA HOUSE: 222H X 164W • CUT SIZE: 14"H X 10¼"W</b> <b>FABRIC (MOUSE): 32 CT Weeks Dye Works Blush Linen</b> <b>DESIGN AREA MOUSE: 27H X 51W • CUT SIZE: 7" X 7"</b>	

**Placement of Mouse House Pieces:** Stitch all the house pieces on Platinum Linen from Weeks Dye Works. Refer to the placement diagram on page 7 of the stitch guide. Leave 2" margins around the perimeter. Leave 32 threads between each panel, side to side and top to bottom.

**General Instructions:** Work all cross stitches over 2 threads of linen using 2 strands of floss. Individual instructions are given for each piece in the Stitch Guide.

**Border Backstitching • All Pieces:** Use 2 strands of 3687. These backstitches are used in finishing, so secure them carefully.

**Beads:** Attach all beads with a beading needle and 1 strand of 648. Go through each bead twice, once on the diagonal and once on the horizontal.



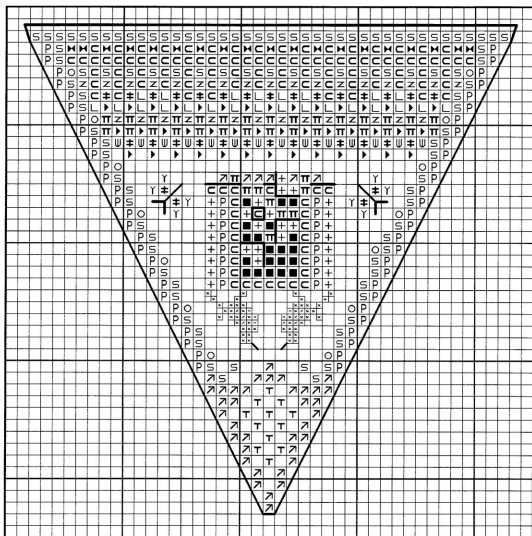
Each square on the graph  
equals 2 threads of fabric

© 2017 Just Nan, Inc.  
All Rights Reserved

## Front Door under a trellis of roses

**Backstitching (1 strand):** Lines in wreath and flower stems with 3045; lavender flowers with 208; door with 3687.

**For all house pieces:** Backstitch border lines with 2 strands of 3687 and attach beads with a beading needle and 1 strand of 648.



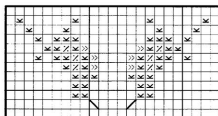
Each square on the graph  
equals 2 threads of fabric

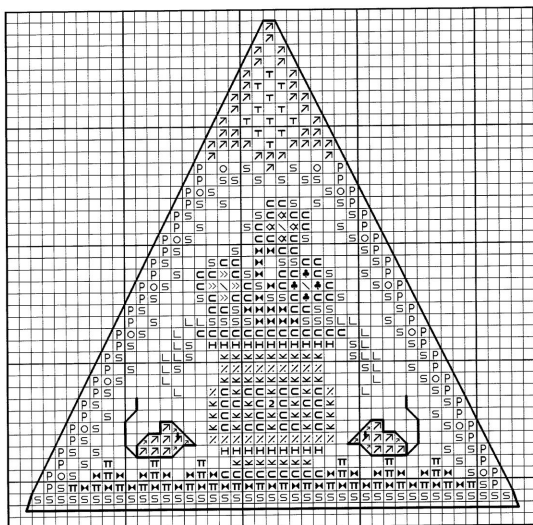
© 2017 Just Nan, Inc.  
All Rights Reserved

## Lavender Garden with bluebirds and butterflies

**Backstitching (1 strand):** Butterflies with 310; flowers in window box with 3687; line in window box with 645.

**Bluebirds over 1:** Refer to the enlarged graph and stitch over 1 thread of linen with 1 strand of floss. Backstitch beaks with 931.



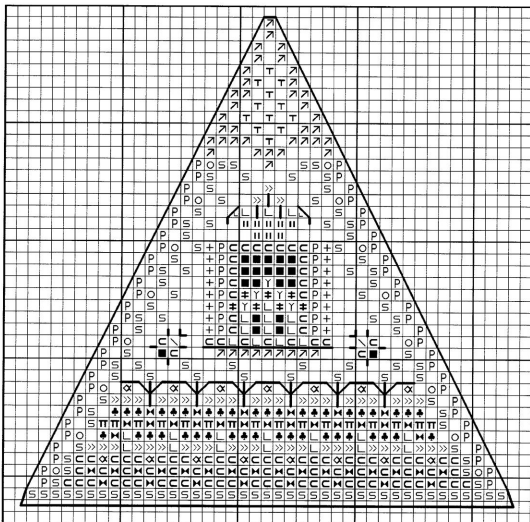


Each square on the graph  
equals 2 threads of fabric

© 2017 Just Nan, Inc.  
All Rights Reserved

## Backyard with very large urn and visitors

Backstitching (1 strand): Mice with 645; eyes with 310.



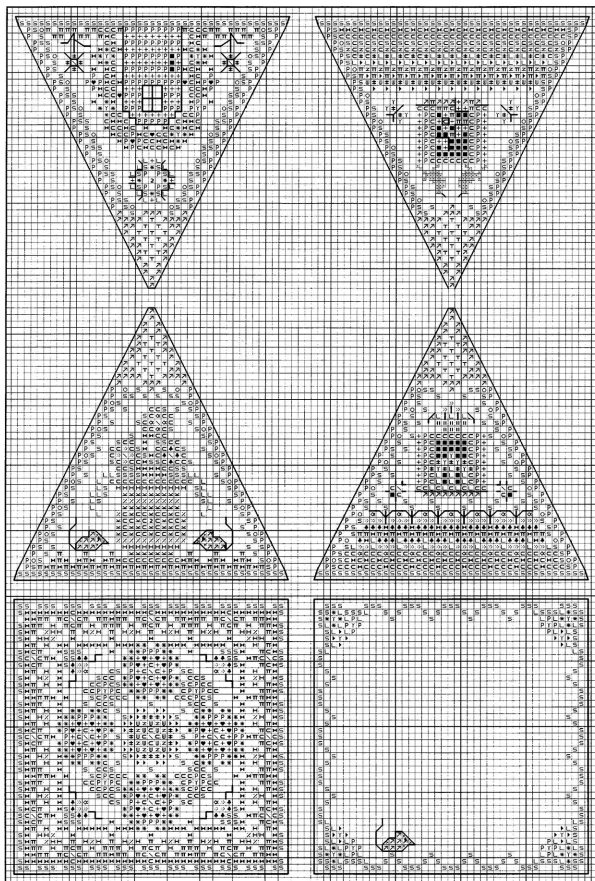
Each square on the graph  
equals 2 threads of fabric

© 2017 Just Nan, Inc.  
All Rights Reserved

## Strawberry Patch with busy bees

**Backstitching (1 strand):** Bees with 310; vines and stems with 3345; potted plant leaves with 3347; line in window box with 645.





### Placement of motifs on 32 CT Platinum Linen

Leave 2" margins at top and bottom and 2" margins on each side.

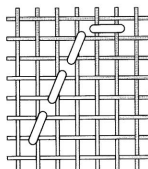
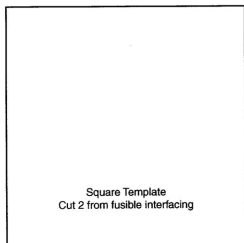
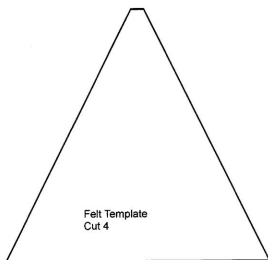
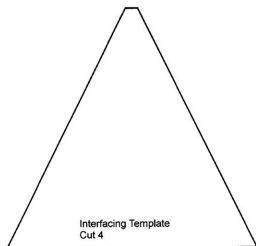
Leave 16 squares (32 threads) between each motif, horizontally and vertically.



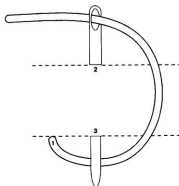
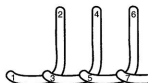
## Summer Mouse in a House Finishing

- Place your completed house pieces face down on thick towels and press.
- For the rug and base, use the Square Template to cut 2 pieces of craft weight fusible interfacing (I used Pellon Craft-Fuse). For the house sections, use the Interfacing Template to cut 4 pieces of the same interfacing.
- Iron 1 piece of interfacing on to the back of each piece. Interfacing should fit **inside** the backstitched border lines. Shave the sides until it does. Interfacing will stabilize your stitches and give body.
- Measure out 3/8" on all sides of the backstitched borders. Use pencil lines to mark this seam allowance.
- Carefully cut along the pencil lines. To reduce bulk, clip the corners of the 2 square pieces on the diagonal, making sure not to cut into any stitches! Do the same for the bottom corners of the triangles. Finger press the seam allowances to the inside so that the backstitches pop along the edges. Baste in place with a **contrasting** thread. Do this for all pieces. When turning the edges of the triangular pieces, turn the tip of the roof in first, then overlap the side margins.
- Cut the pink felt into 4 pieces, each measuring 3" X 3". Use the Felt Template to cut 4 pieces of felt.
- Cut the ribbon into 4 equal pieces. With sewing thread, sew 1 end of each ribbon tie to the point of each triangular house section. Overlap ribbon about 3/8" inside the roof, sewing the ribbon to the linen margins only.
- Lay the felt in place on each piece of the house and baste or pin in place. The straight side of the triangular felt should fall just above the backstitched line. Attach the felt along the 2 diagonal sides of each piece. Refer to the Blanket Stitch diagram and use 1 strand of 3689 floss. You will catch the linen under the backstitches and then under 1/8" of the felt. Space the blanket stitches about 1/8" apart (every other backstitch). You will see the stitches on the felt. The felt will cover the linen margins and the attached ribbon. When the sides are done, blanket stitch the felt at the bottom to the linen margin **just above** the backstitches. (You will use the backstitches to attach the house to the rug/base.) Carefully remove any basting stitches.
- Line up the Rug and Base pieces, wrong sides together and pin. Join the backstitches of 3 sides with 1 strand of 3687. Slip the chipboard square between the 2 pieces, then join the final side. Carefully remove basting stitches.
- Build the house! Turn the square base so that the mouse on the bottom is facing you. Flip to the Rug side, keeping mouse at the bottom. Line up the base of each house section with the rug. Felt side should face the rug. Use 2 strands of 3687 to join the backstitches, making sure you secure each end. The needle should pass through pink thread only. Order of attachment, counter clockwise: Front Door at 6 o'clock, Lavender Garden at 3 o'clock, Backyard at 12 o'clock, Strawberry Patch at 9 o'clock.
- Follow the Finishing Instructions for Miss Strawberry Mouse and get her ready to move into her house.
- Decorate the pink felt walls however you wish – pins, needles, small buttons, charms, etc. There is a little adhesive gingham heart in your kit. Trim the edges, remove the backing and press it on the felt. Strawberry Mouse needed more storage, so we added a Little Lady Mouse mini slide for extras. The mouse and the slide fit in the house together. (The slide is available separately.) Place Strawberry Mouse on her pretty rug and tie opposite sections together with bows. Your Summer Mouse in a House is ready to admire and enjoy!

# House Templates



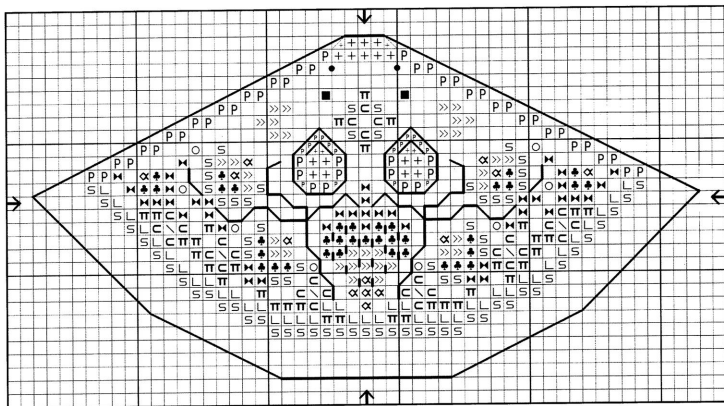
**Diagonal Backstitch for the house border lines**



## BLANKET STITCH

Begin by knotting a long piece of thread and inserting this knot between the fabric layers. Pull the needle through the edge to the starting point (1). For each stitch, insert the needle just under the backstitched lines on the linen (2) and just to the inside edge of the felt (3). Keep the sewing thread under the needle as you pull the needle toward you. Advance the stitches so that they are spaced about 1/8" apart. After the last stitch is made, push the needle back through the edge of the linen just past the final stitch. Pull the thread up under a section of felt and clip the thread.

# Miss Strawberry Mouse



Each square on the graph  
equals 2 threads of fabric

© 2017 Just Nan, Inc.  
All Rights Reserved

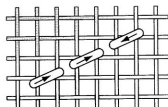
**Instructions:** Center design on the Blush linen. Work all cross stitches over 2 threads of linen using 2 strands of floss. Dots on either side of nose are for whiskers.

**Backstitching (1 strand):** Top of inner ear with 3689; outer ear outline with 3687; vines with 3345; seed lines in strawberry with 3854. Backstitch the border with 2 strands of 3688.

**Smyrna Cross:** Work the eyes as Smyrna crosses with 2 strands of 310.

**Beads:** Attach with a beading needle and 1 strand of 3689. Go through each bead twice.

Follow the finishing instructions to get Miss Strawberry Mouse ready to live in her house.



Straight edge backstitching  
for mouse border



Smyrna Cross  
Mouse eyes

## Miss Strawberry Mouse Finishing Instructions

1. Gently press stitched fabric on the wrong side, cushioning the design with thick towels.
2. Measure out 3/8" on the straight edges of the design and 1/2" along the curved bottom. Lightly mark the lines with pencil; cut along the lines. You will turn these seam margins to the inside as you construct the mouse.
3. Finger-press the straight edge margins to the inside. Wrong sides together, slip stitch the straight edges together using 1 strand of 3688. Begin at the bottom and join opposing backstitches. End off back into the seam.
4. Turn the bottom margin to the inside along the backstitched line. Use 2 long (24") strands of 3688 to gather this bottom edge. Secure your thread at the seam. Using the backstitches as a guide, take small gathering stitches through the folded-over seam margin all around. Do not end your thread yet, you will use it for all the final steps.
5. Stuff the mouse with polyfil or cotton balls, making sure the stuffing reaches into the nose.
6. Pull on the gathering stitches to close the bottom, making sure that the gathers are evenly distributed. There will be a small opening. Secure the thread at the seam. Do not end off.
7. Weave your needle around to the midpoint of the mouse's back (center of strawberry). Curl one end of the pink wire tail and insert it about 1/4" into the opening at this middle point. Overcast the covered wire to the gathered edge of the linen.
8. Center the antique brass fairy button over the opening. Use the remaining thread in your needle to overcast the edge of the button to the gathered linen. End off. The button covers the opening and provides a weighted base for the mouse.
9. Your mouse needs whiskers! Thread 2 strands of white heavy-weight sewing thread in your needle. Use the dots on the graph as a guide. Go in on one side, out on the other, leaving 1/2" of thread showing on each side. Snip and repeat. Trim if necessary. Use a toothpick to add the tiniest bit of white glue on each side to hold the whiskers in place.
10. Miss Strawberry Mouse wears a strawberry flower hat and holds a gold strawberry. For the hat, use a needle to enlarge the opening in the center of the white flower between the ears. Trim the stem of the strawberry flower to about 1/4", apply a tiny amount of glue to the green leaves above the stem and insert the stem into the hole so that the flower hat is flush to her head. Let the glue dry. Position the strawberry bead at the front seam and hold in place with a straight pin. Bend the tail into a pleasing shape. Trim if necessary and add a dab of white glue to the end to prevent fraying. Strawberry Mouse is ready to place in her house.

<b>SUMMER MOUSE IN A HOUSE MATERIALS LIST</b>	
<b>DMC</b>	
B5200	
208	
209	
210	
211	
310	
326	
335	
645	
647	
648	
704	
931	
932	
3326	
3345	
3346	
3347	
3685	
3687	
3688	
3689	
3752	
3854	
3855	
3862	
<b>FABRIC (HOUSE): 32 CT Weeks Dye Works Platinum Linen</b> <b>TOTAL AREA HOUSE: 222H X 164W • CUT SIZE: 14"H X 10½"W</b> <b>FABRIC (MOUSE): 32 CT Weeks Dye Works Blush Linen</b> <b>DESIGN AREA MOUSE: 27H X 51W • CUT SIZE: 7" X 7"</b>	

**Total area for the house includes 2" margins and space between motifs.**

**Materials and templates are designed for the specified 32 count linens.**

**Included:**  
 Ribbon  
 Felt  
 Chipboard for base  
 Blueberry Beads  
 2 Tiny Swarovski Crystal Beads in a separate bag.  
 Be careful, we can't replace them!  
 Adhesive Gingham Heart  
 Wired String Tail  
 Ant. Brass Button  
 Gold Strawberry Bead  
 White Strawberry Flower



JN296LE

Finished house measures approx. 2¾" X 2¾"

© 2017 Just Nan, Inc.  
 All Rights Reserved



7 12214 01707 0