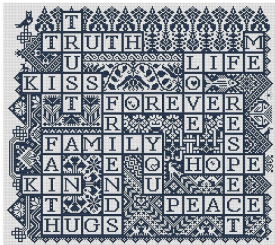


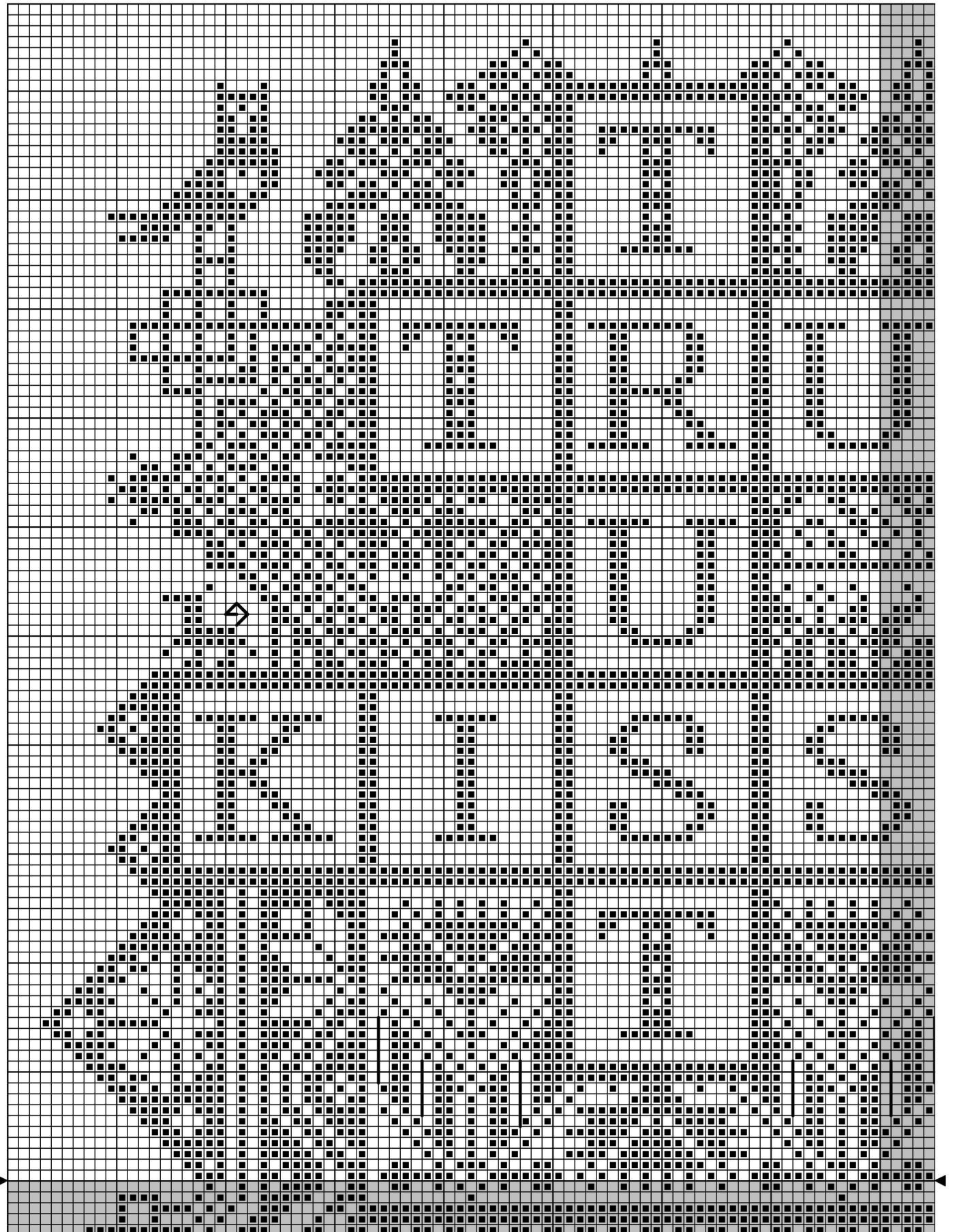
# LONG DOG SAMPLERS

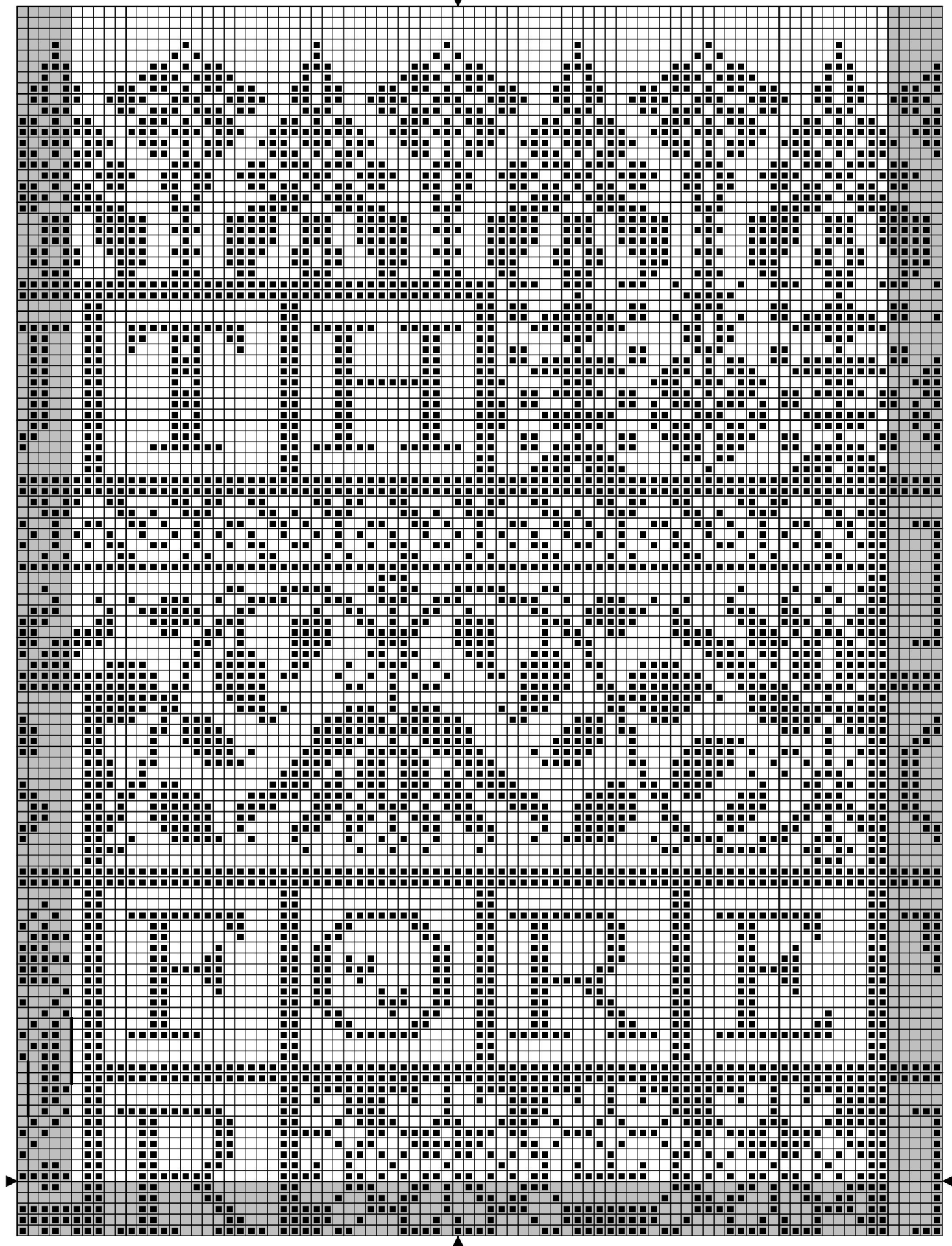


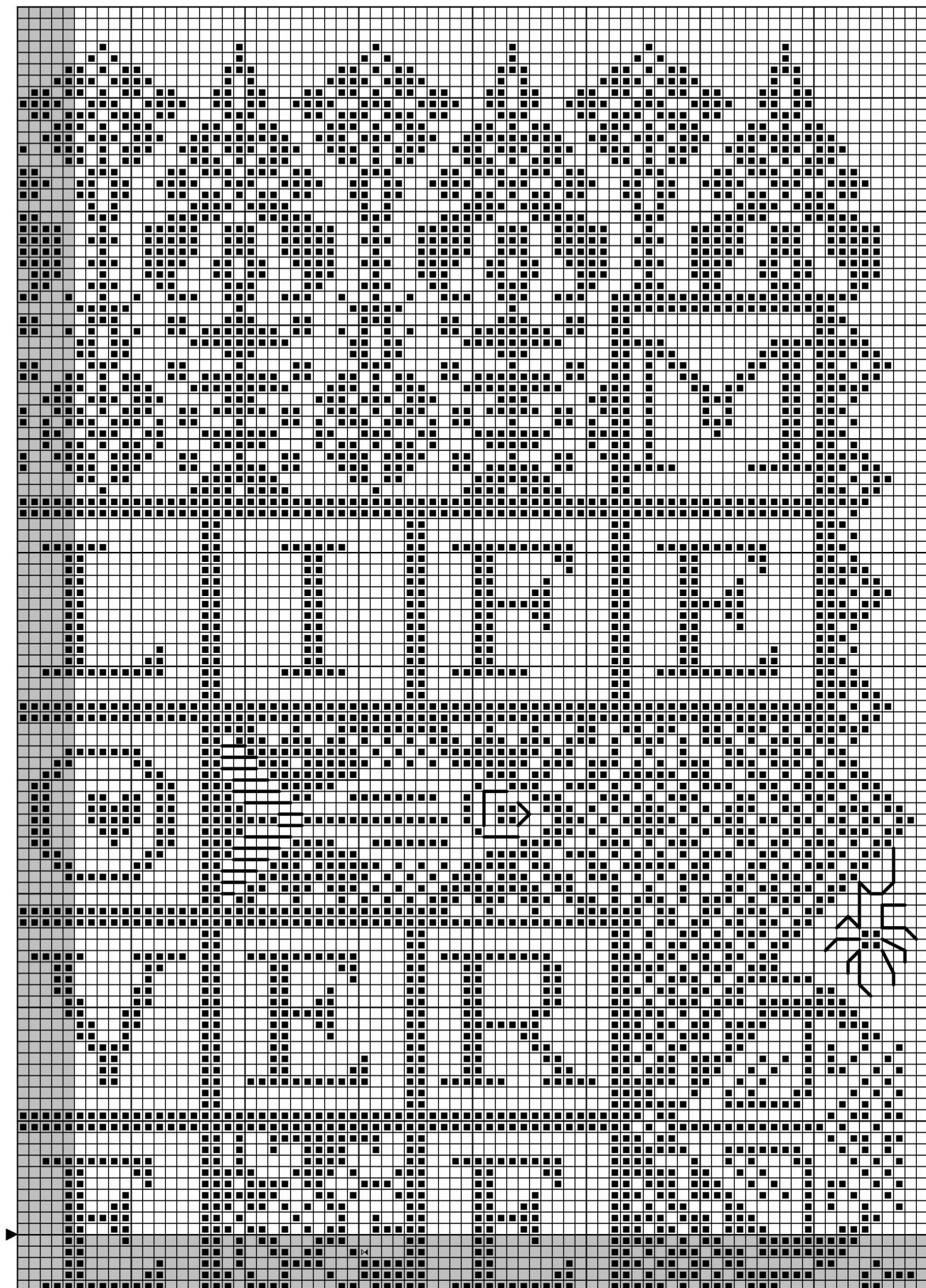
KROZUGRO

Size: 237 x 210 stitches

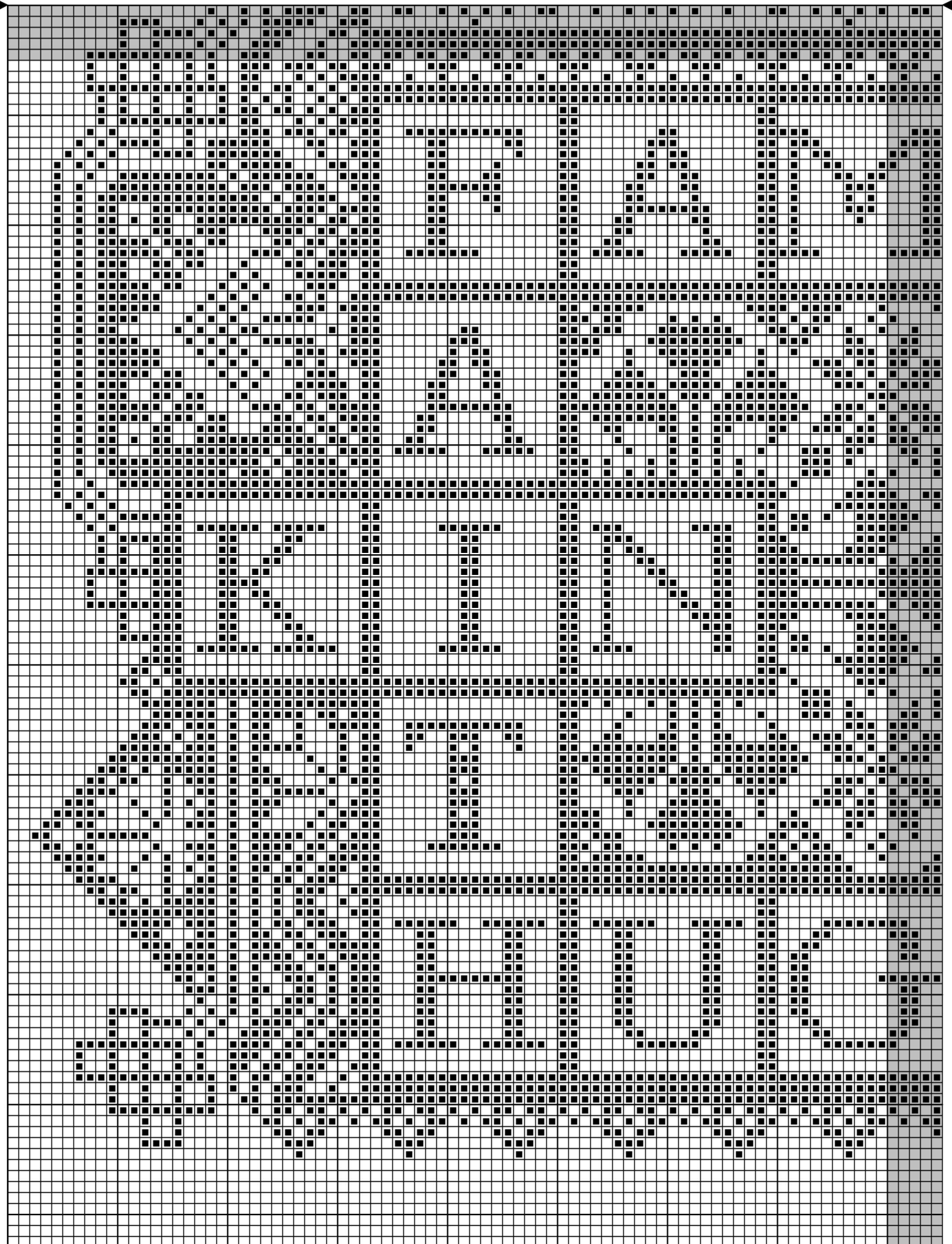


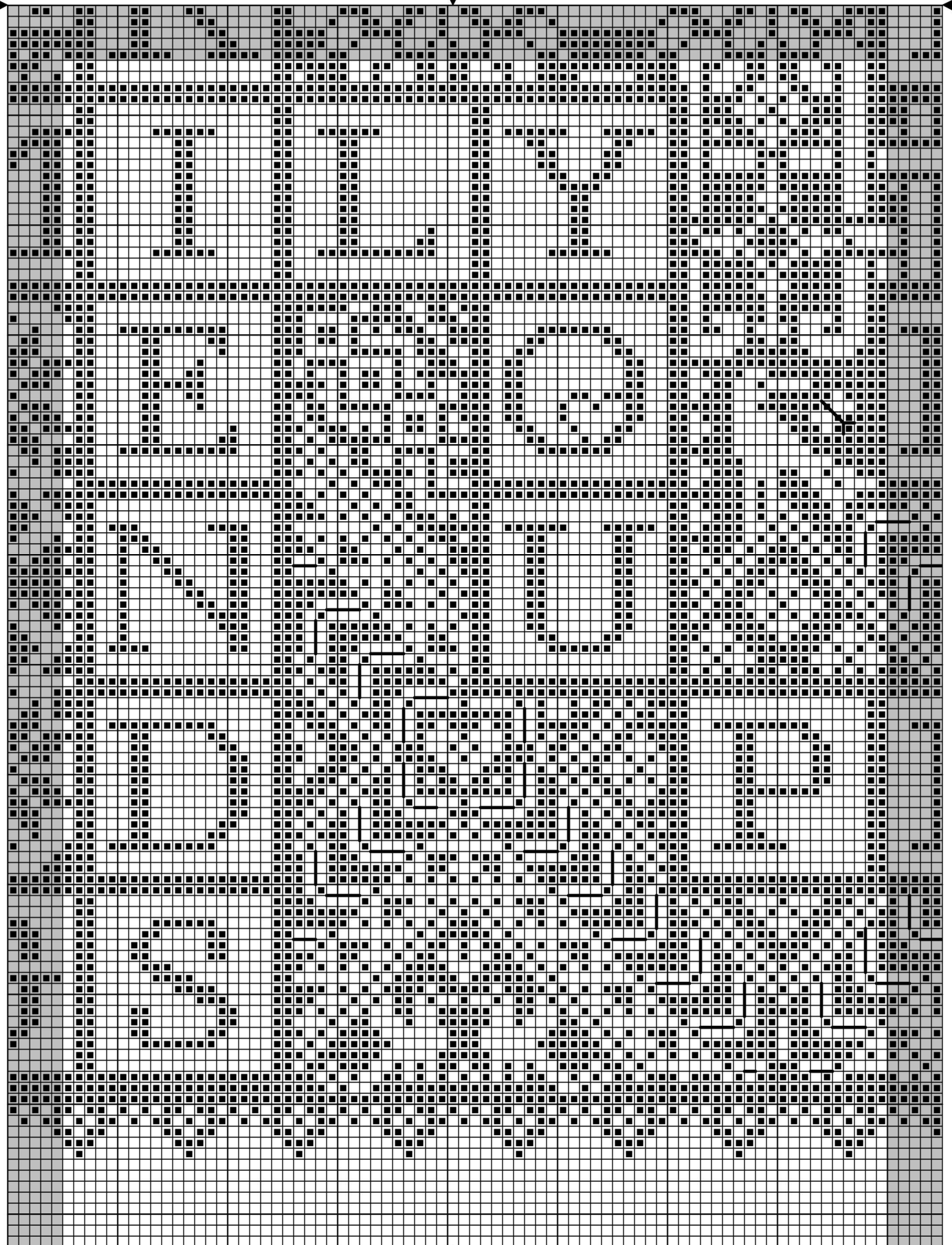


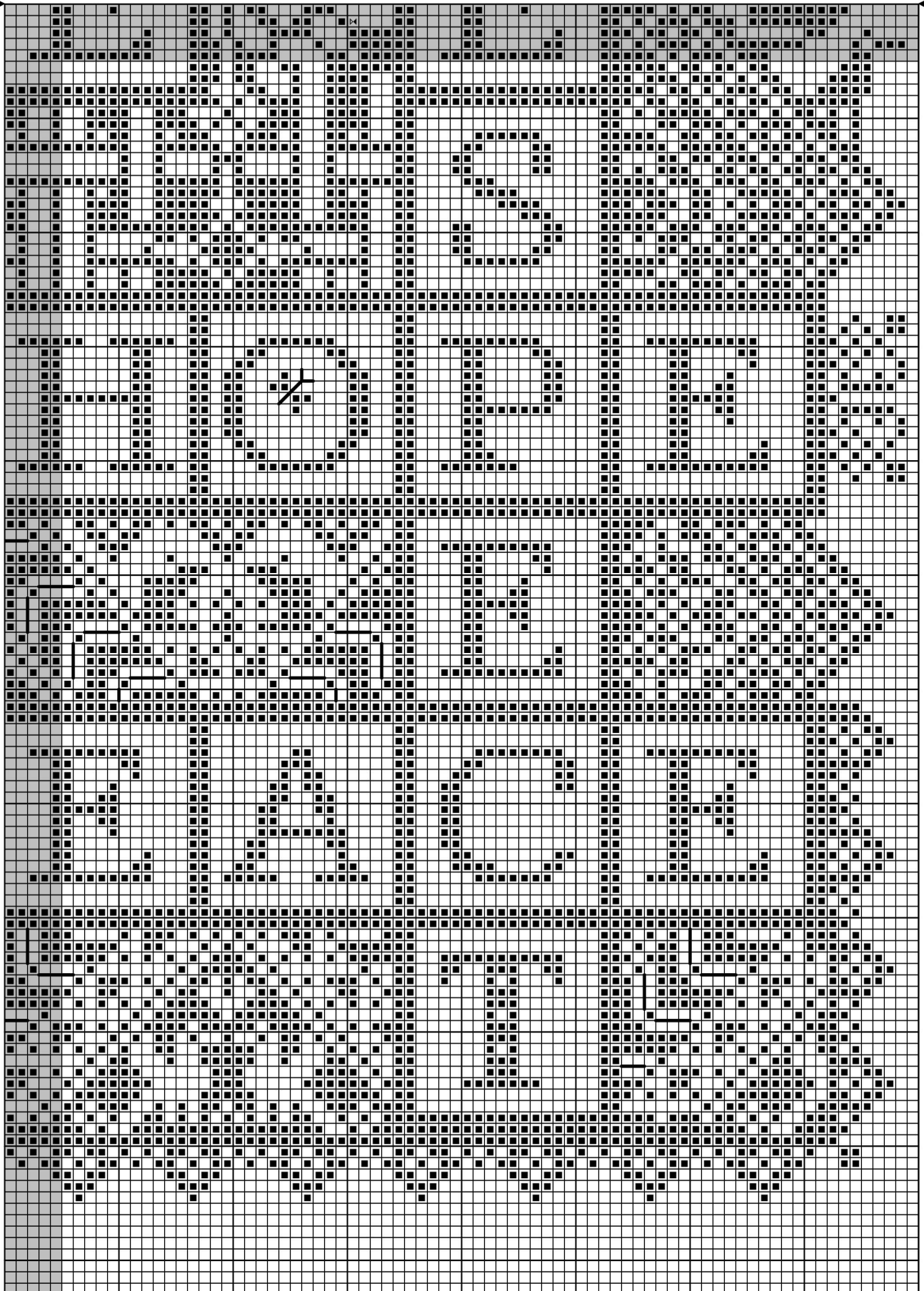












KROZWYRD  
Long Dog Samplers ©

There are 23500 cross stitches and 271 back stitches in this sampler.

MATERIAL REQUIRED

If working on 16# Aida/32# linen the design itself will measure 14.81" x 13.13".

If working on 18# Aida/36# linen the design itself will measure 13.17" x 11.67".

You will then need to add your preferred size margins all round to these measurements to determine how much material will be required to stitch this design.

THREAD LENGTHS

If using 16# Aida/32# linen two strands for cross stitches and one strand for back stitches you will require 104.3 meters of standard 6-ply thread for this project plus a short length of white.

If using 18# Aida/36# linen one strand for all stitches you will require 46.6 meters of standard 6-ply thread for this project plus a short length of white.

Enjoy your stitching and please feel free to post updates of your work on the Long Dog Samplers Facebook page at any time as I'm sure all the other Long Dog addicts would love to see them.

Jools