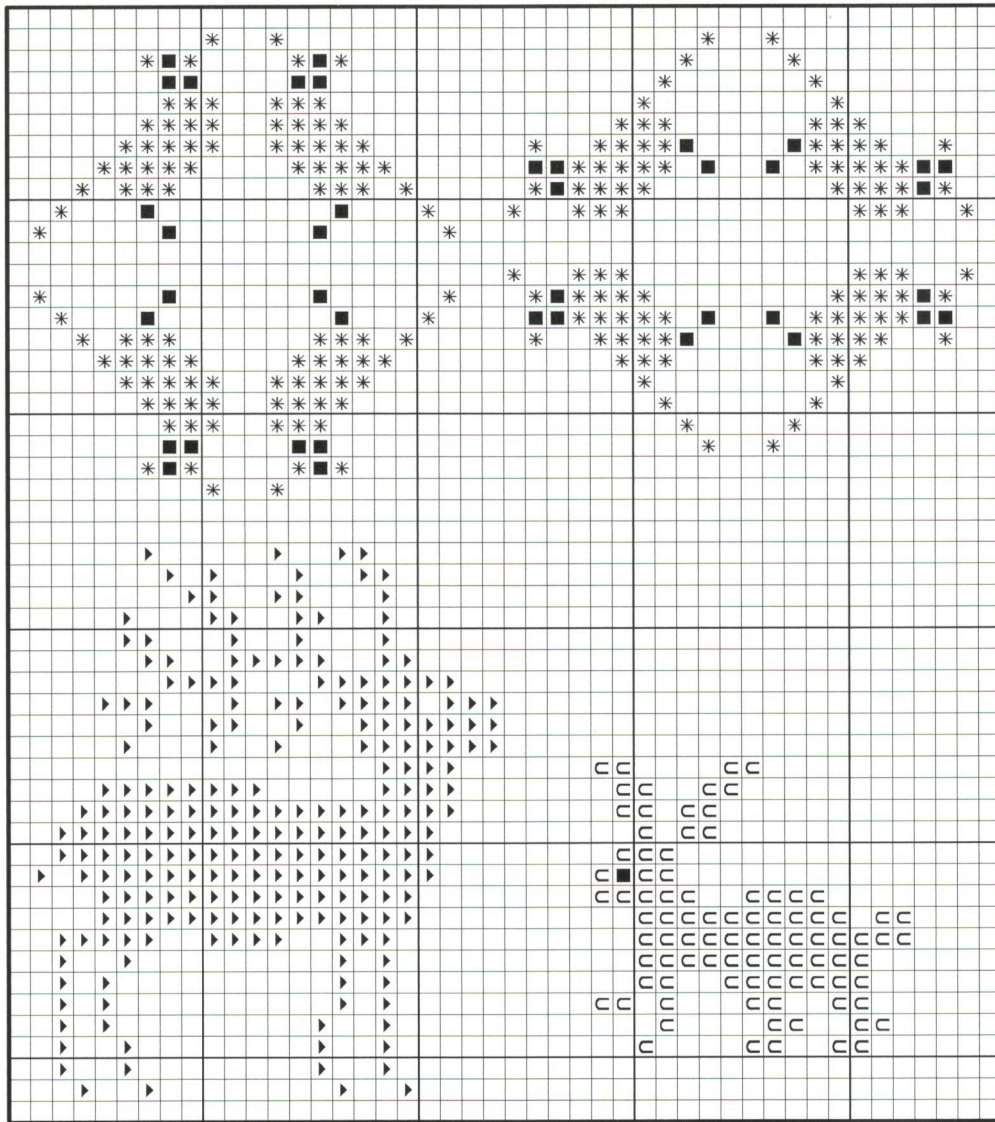


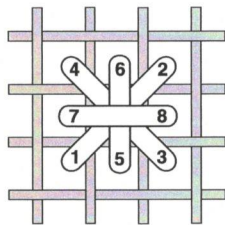
Just Nails
Winter in the Forest



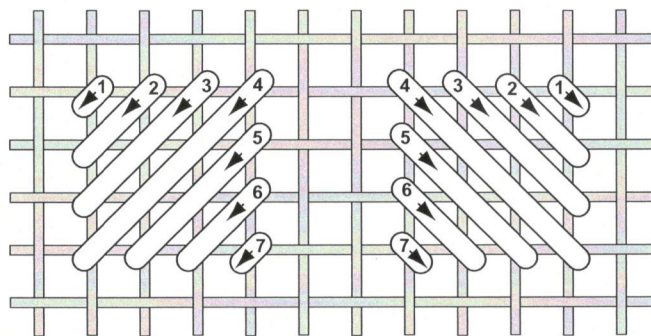
Lettered Border Series IV



Forest Animals over 1
Each square equals 1 thread



Smyrna Cross



Satin Cushion

Winter in the Forest

Lettered Border Series: *Winter in the Forest* is the fourth in a series of four samplers published in 2013. The other three: *Spring in the Tulips*, *Summer by the Sea*, *Autumn in the Country*.

Instructions: Center design on linen. With the exception of the cardinals, deer and white rabbit, work all cross stitches over 2 threads of linen using 2 strands of floss. For the symbol “x” use just 1 strand of B5200 for cross stitches.

Backstitching (1 strand): Steps to the house with 310; lines in small snowflakes and snow lines on roof with B5200.

Backstitching (2 strands): Lines in the holly with 987.

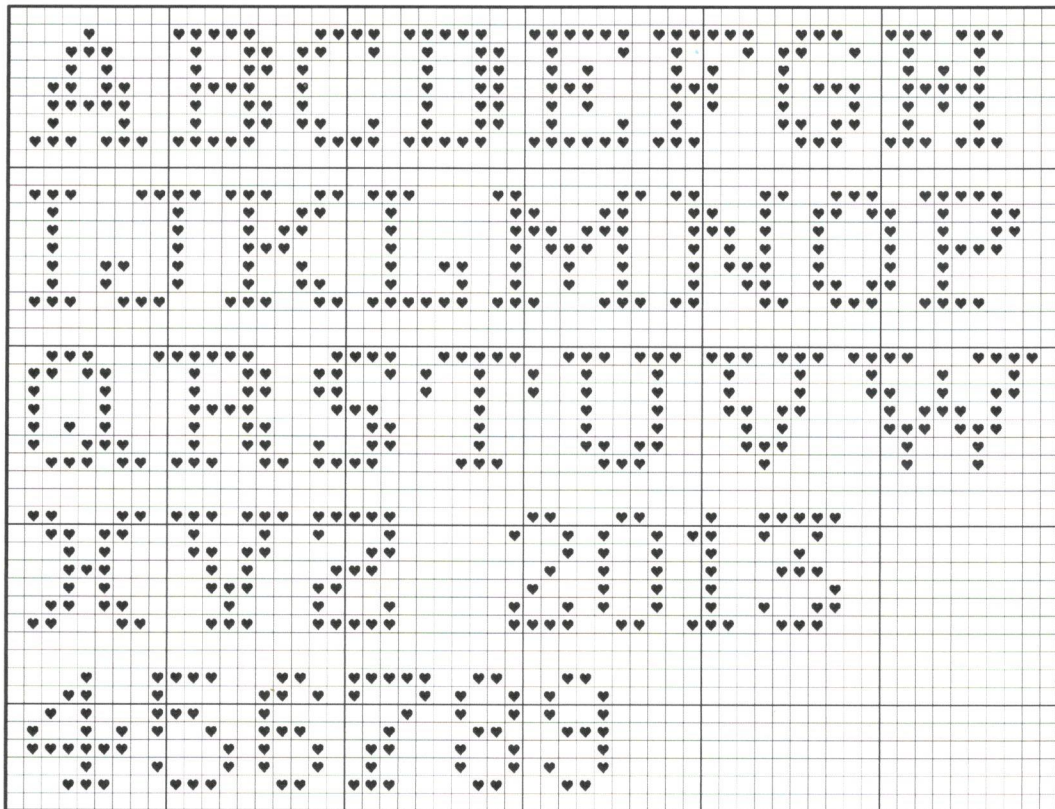
Alphabet letters over 1: An enlarged alphabet and number graph is provided. There are extra numbers for changing the date. Refer to the stitch graph for placement. Work over 1 thread of linen using 1 strand of floss in the indicated color.

Forest Animals over 1: Refer to the enlarged views and work over 1 thread of linen using 1 strand of indicated color. All 8 cardinal positions are shown. Match them to the stitch graph.

Smyrna Cross: Indicated by symbols on the graph and in the symbol table. Use 2 strands of GAST Holly Berry.

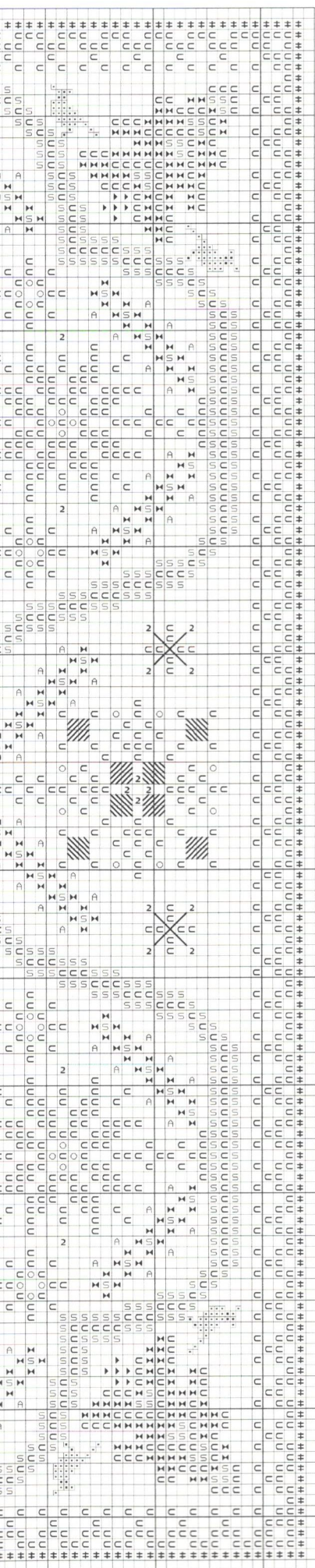
Satin Cushion: Used in the large snowflakes in the border at the north, south, east and west positions. Two versions are shown. Match the direction of the lines in the diagram to the lines on the stitch graph. Use 2 strands of B5200.

Embellishments: Attach all beads with a beading needle and 1 strand of 648. Go through each bead twice.



Each square equals 1 thread





© 2013 Just Nan, Inc. • by Nan Caldera
All Rights Reserved

Each square on the graph equals 2 threads of fabric

SYMBOL	DMC
x	B5200 (1 strand)
C	B5200 (2 strands)
♥	304
■	310
*	321
±	500
I	642
>>	645
TT	648
►	801
Z	816
◄	890
S	895
L	987
Y	3854
II	3862
SYMBOL	GENTLE ART SAMPLER THREAD
À	0311 Holly Berry (Smyrna Cross)
SYMBOL	EMBELLISHMENTS
O	Silver Crystal Bead
2	Silver Cream Bead
FABRIC: 32CT ZWIGART STONE GREY BELFAST LINEN	
DESIGN AREA: 143H X 143W • 9" X 9" on 32 count	



