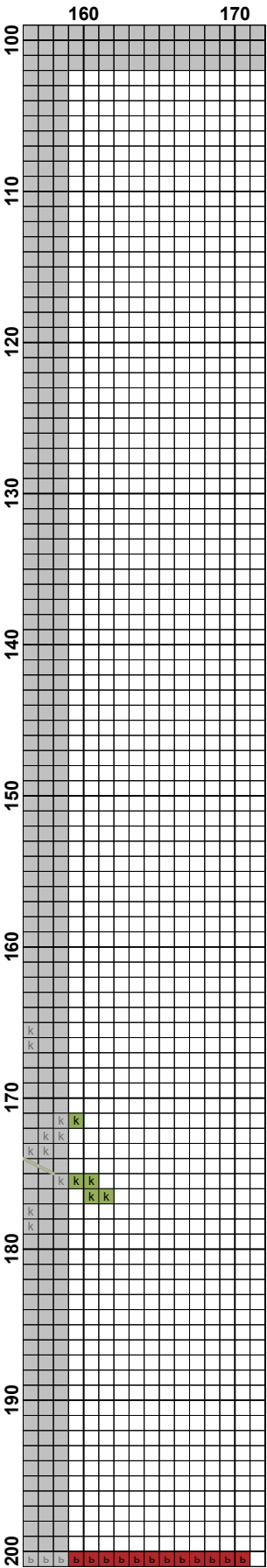
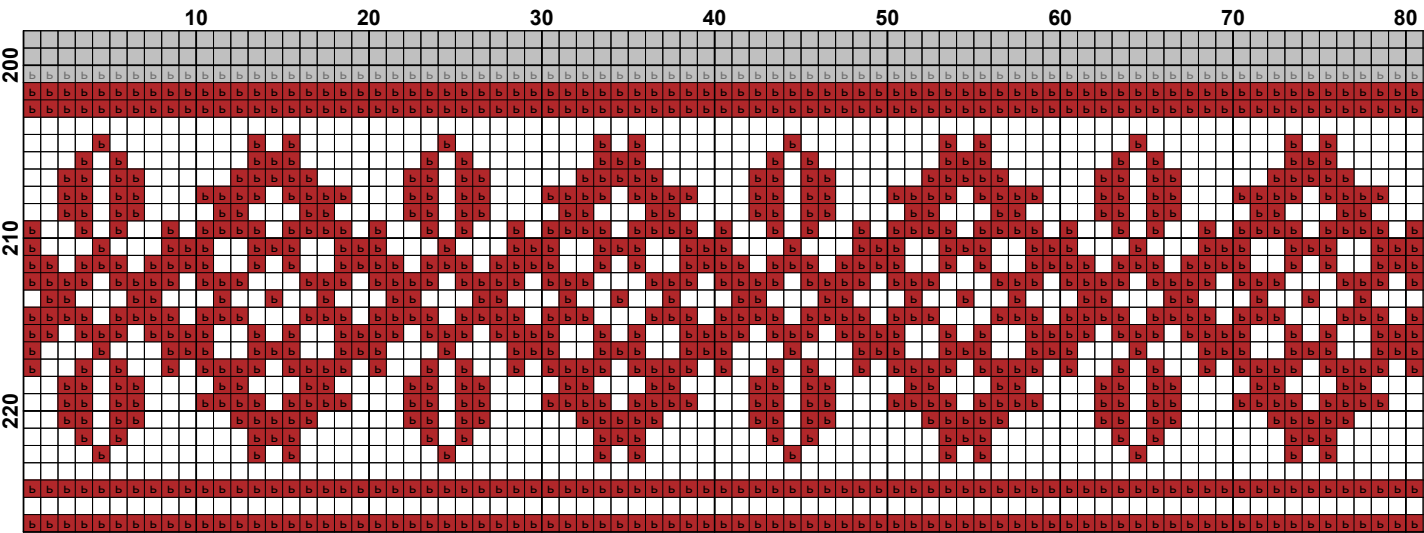
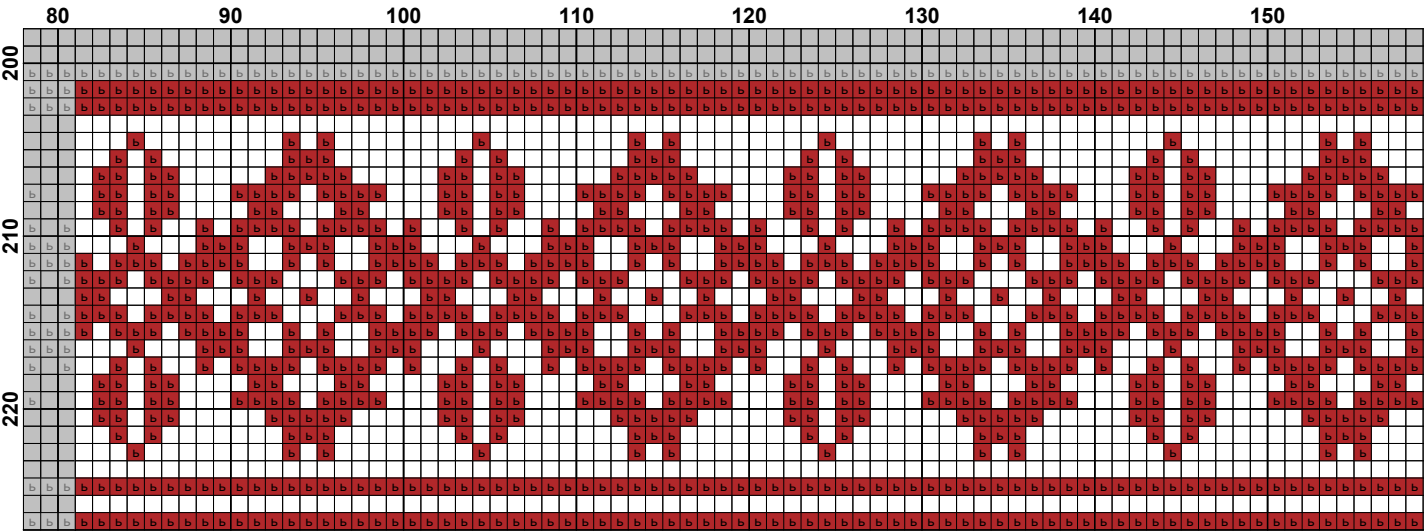




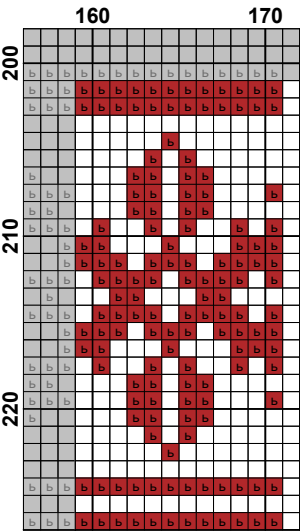
|     | 80 | 90 | 100 | 110 | 120 | 130 | 140 | 150 |  |
|-----|----|----|-----|-----|-----|-----|-----|-----|--|
| 100 |    |    |     |     |     |     |     |     |  |
| 110 |    |    |     |     |     |     |     |     |  |
| 120 |    |    |     |     |     |     |     |     |  |
| 130 |    |    |     |     |     |     |     |     |  |
| 140 |    |    |     |     |     |     |     |     |  |
| 150 |    |    |     |     |     |     |     |     |  |
| 160 |    |    |     |     |     |     |     |     |  |
| 170 |    |    |     |     |     |     |     |     |  |
| 180 |    |    |     |     |     |     |     |     |  |
| 190 |    |    |     |     |     |     |     |     |  |
| 200 |    |    |     |     |     |     |     |     |  |











**Designed By:** Ярослава Бабяк  
**Fabric:** Aida 14, White  
 171w X 227h Stitches  
**Size:** 14 Count, 31.02w X 41.18h cm

**Floss Used for Full Stitches:**

| Symbol | Strands | Type | Number | Color                |
|--------|---------|------|--------|----------------------|
|        | 2       | DMC  | 300    | Mahogany-VY DK       |
|        | 2       | DMC  | 310    | Black                |
|        | 2       | DMC  | 311    | Navy Blue-MD         |
|        | 2       | DMC  | 321    | Christmas Red        |
|        | 2       | DMC  | 349    | Coral-DK             |
|        | 2       | DMC  | 350    | Coral-MD             |
|        | 2       | DMC  | 351    | Coral                |
|        | 2       | DMC  | 352    | Coral-LT             |
|        | 2       | DMC  | 353    | Peach                |
|        | 2       | DMC  | 469    | Avocado Green        |
|        | 2       | DMC  | 470    | Avocado Green-LT     |
|        | 2       | DMC  | 471    | Avocado Green-VY LT  |
|        | 2       | DMC  | 472    | Avocado Green-UL LT  |
|        | 2       | DMC  | 580    | Moss Green-DK        |
|        | 2       | DMC  | 581    | Moss Green           |
|        | 2       | DMC  | 725    | Topaz                |
|        | 2       | DMC  | 726    | Topaz-LT             |
|        | 2       | DMC  | 727    | Topaz-VY LT          |
|        | 2       | DMC  | 730    | Olive Green-VY DK    |
|        | 2       | DMC  | 732    | Olive Green          |
|        | 2       | DMC  | 740    | Tangerine            |
|        | 2       | DMC  | 742    | Tangerine-LT         |
|        | 2       | DMC  | 746    | Off White            |
|        | 2       | DMC  | 783    | Topaz-MD             |
|        | 2       | DMC  | 814    | Garnet-DK            |
|        | 2       | DMC  | 815    | Garnet-MD            |
|        | 2       | DMC  | 816    | Garnet               |
|        | 2       | DMC  | 833    | Golden Olive-LT      |
|        | 2       | DMC  | 840    | Beige Brown-MD       |
|        | 2       | DMC  | 869    | Hazelnut Brown-VY DK |
|        | 2       | DMC  | 936    | Avocado Green-VY DK  |
|        | 2       | DMC  | 937    | Avocado Green-MD     |
|        | 2       | DMC  | 939    | Navy Blue-VY DK      |
|        | 2       | DMC  | 946    | Burnt Orange-MD      |
|        | 1       | DMC  | 950    | Desert Sand-LT       |
|        | 2       | DMC  | 3721   | Shell Pink-DK        |
|        | 1       | DMC  | 3727   | Antique Mauve-LT     |
|        | 2       | DMC  | 3770   | Tawny-VY LT          |
|        | 2       | DMC  | 3773   | Desert Sand-MD       |
|        | 2       | DMC  | 3821   | Straw                |
|        | 2       | DMC  | 3822   | Straw-LT             |

**Floss Used for Back Stitches:**

| Symbol | Strands | Type | Number | Color               |
|--------|---------|------|--------|---------------------|
|        | 1       | DMC  | 471    | Avocado Green-VY LT |
|        | 1       | DMC  | 3721   | Shell Pink-DK       |