

"Portland Breakwater Light"

(Maine)

Designed and stitched by Marc J. Saastad

Middle is marked with arrows on the sides and a black dot in the middle

Stitch count is 177 x 258 and measures 11.1" x 16.1" when completed.

Add at least 4" to the measurements on each side to allow for framing.

Stitched with 2 strands of floss on 32 count Twilight Blue Belfast Linen by Zweigart

Stitched with 2 strands of floss on 32 count Pearl Grey Belfast Linen by Zweigart

gives the piece a little more "foggy" feeling unless you want the blue background

Stitched with one strand of floss over 1 (with the exception of tweeded colors where one strand of each color is used),

on 28 count Twilight Blue Belfast Linen by Zweigart it measures 6.3" x 9.2".

When stitching with Kreinik Blending Filament use 2 strands of DMC floss and one strand of the Kreinik Blending Filament.

All back-stitching is done using one strand of floss.

Backstitch rocks, fence and top part of lighthouse with DMC : 3371 or ANCHOR : 328.

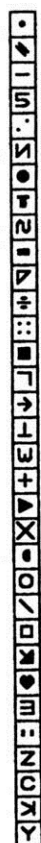
Backstitch small lines on bottom in the water with DMC : Blanc or ANCHOR : 2.

Backstitch the main part of the lighthouse with DMC : 317 or ANCHOR : 400

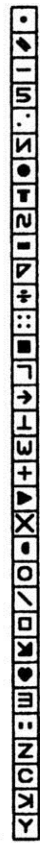
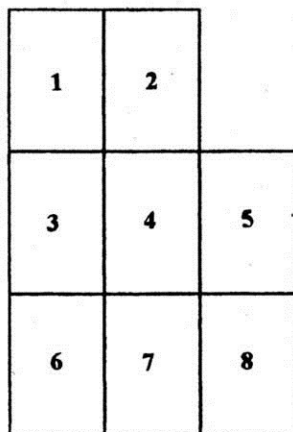
DMC

Page layout

ANCHOR



- DMC: Blanc
- DMC: 928
- DMC: 3325
- DMC: 762
- DMC: 3022
- DMC: 775
- DMC: 936
- DMC: 937
- DMC: 535
- DMC: 451
- DMC: 452
- DMC: 453
- DMC: 318
- DMC: 3371
- DMC: 3752
- DMC: 3753
- DMC: 645
- DMC: 312
- DMC: 644
- DMC: 647
- DMC: 648
- DMC: 3023
- DMC: 524
- DMC: 415
- DMC: 317
- DMC: 3051
- DMC: 3799
- DMC: 322
- DMC: 334
- DMC: 927
- DMC: 3755
- DMC: 3012
- DMC: 775 + Kreinik 032 Pearl



- Anchor: 2
- Anchor: 274
- Anchor: 129
- Anchor: 234
- Anchor: 681 + 8581
- Anchor: 128
- Anchor: 269
- Anchor: 268
- Anchor: 401
- Anchor: 233
- Anchor: 232
- Anchor: 231
- Anchor: 399
- Anchor: 382
- Anchor: 1032
- Anchor: 1031
- Anchor: 273
- Anchor: 979
- Anchor: 830
- Anchor: 8581
- Anchor: 900
- Anchor: 1040
- Anchor: 858
- Anchor: 398
- Anchor: 400
- Anchor: 681
- Anchor: 236
- Anchor: 978
- Anchor: 977
- Anchor: 848
- Anchor: 140
- Anchor: 844
- Anchor: 128 + Kreinik 032 (pearl)

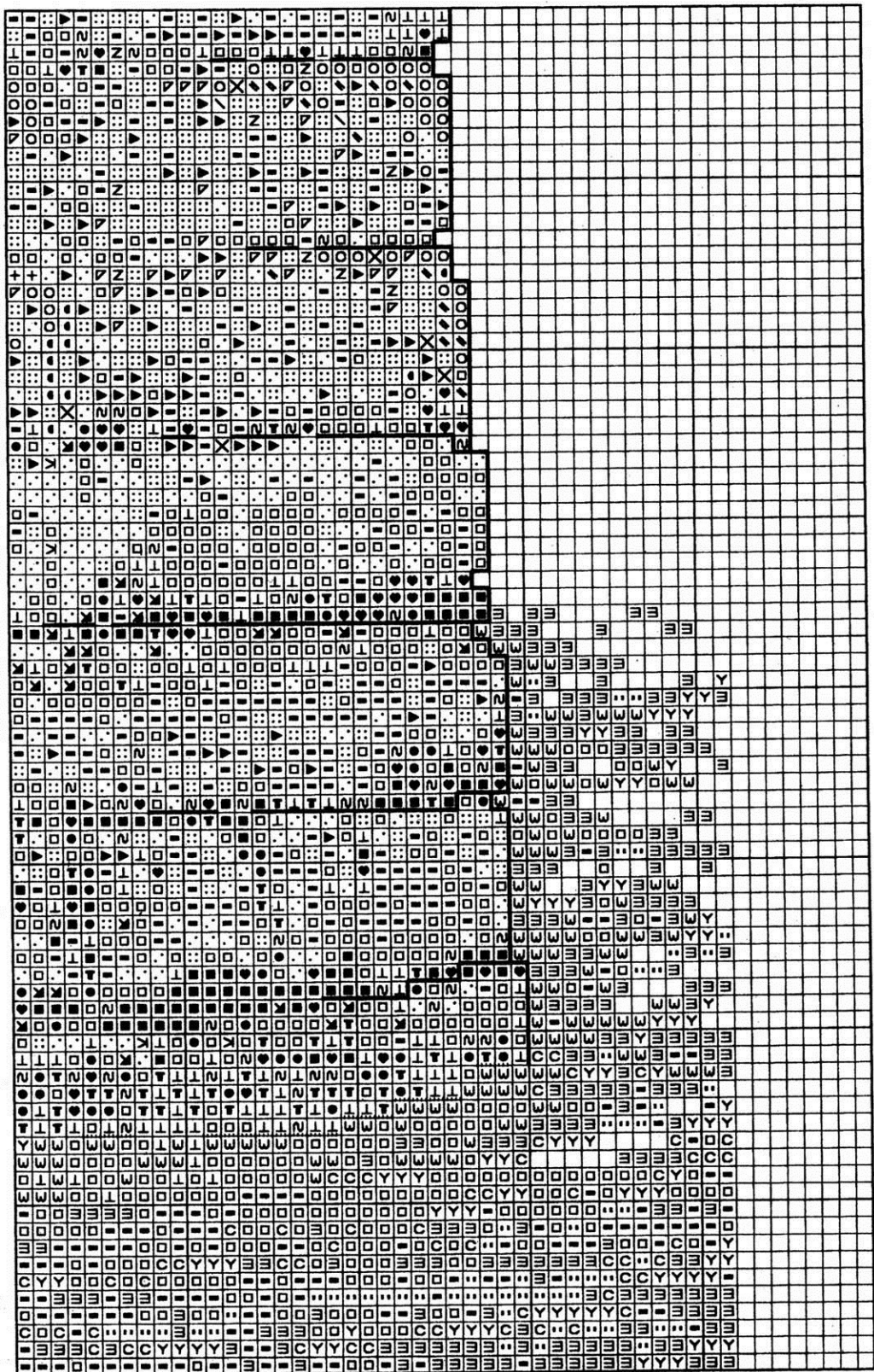
The Silver Lining™

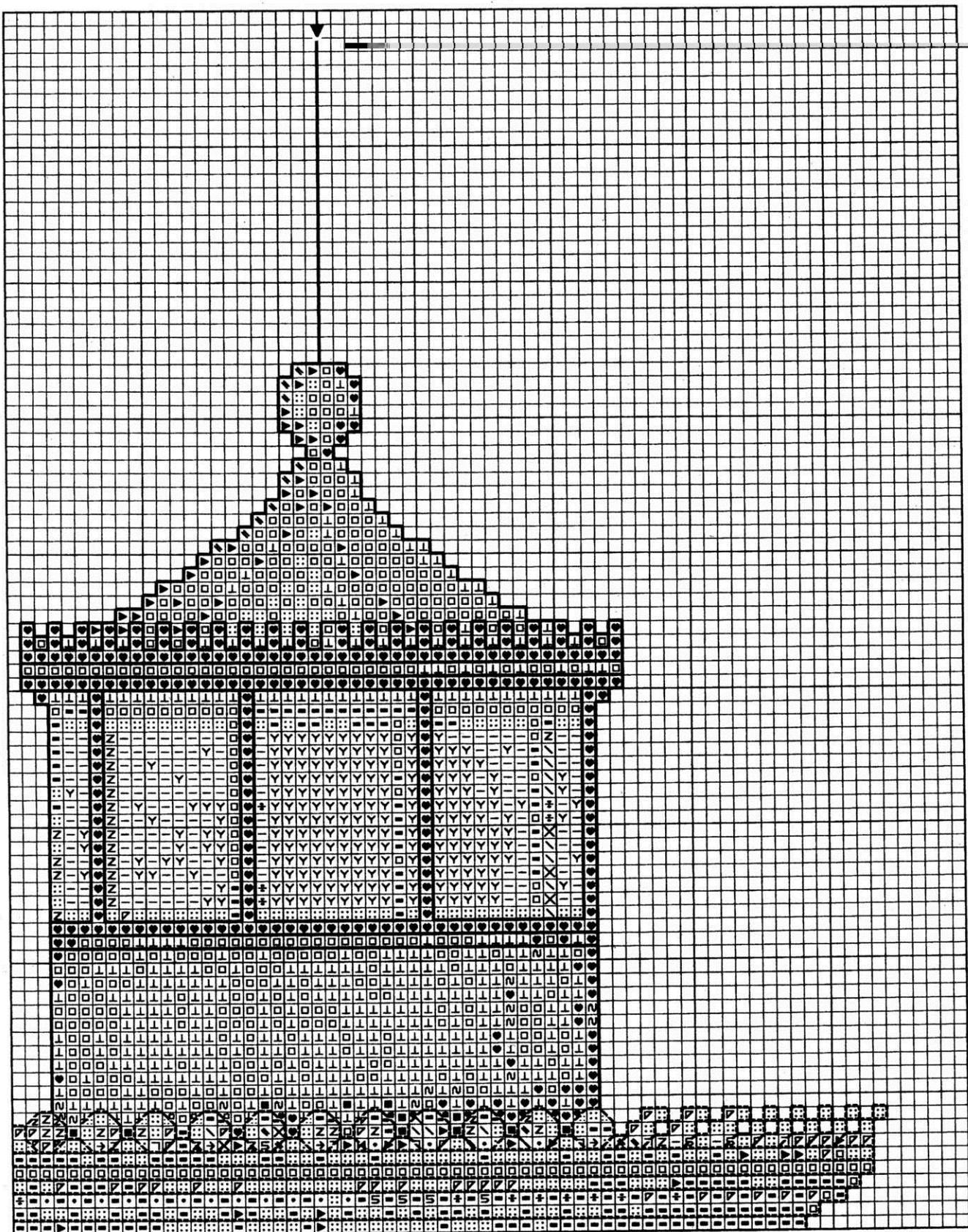
copyright © 2000. The Silver Lining. All rights reserved.

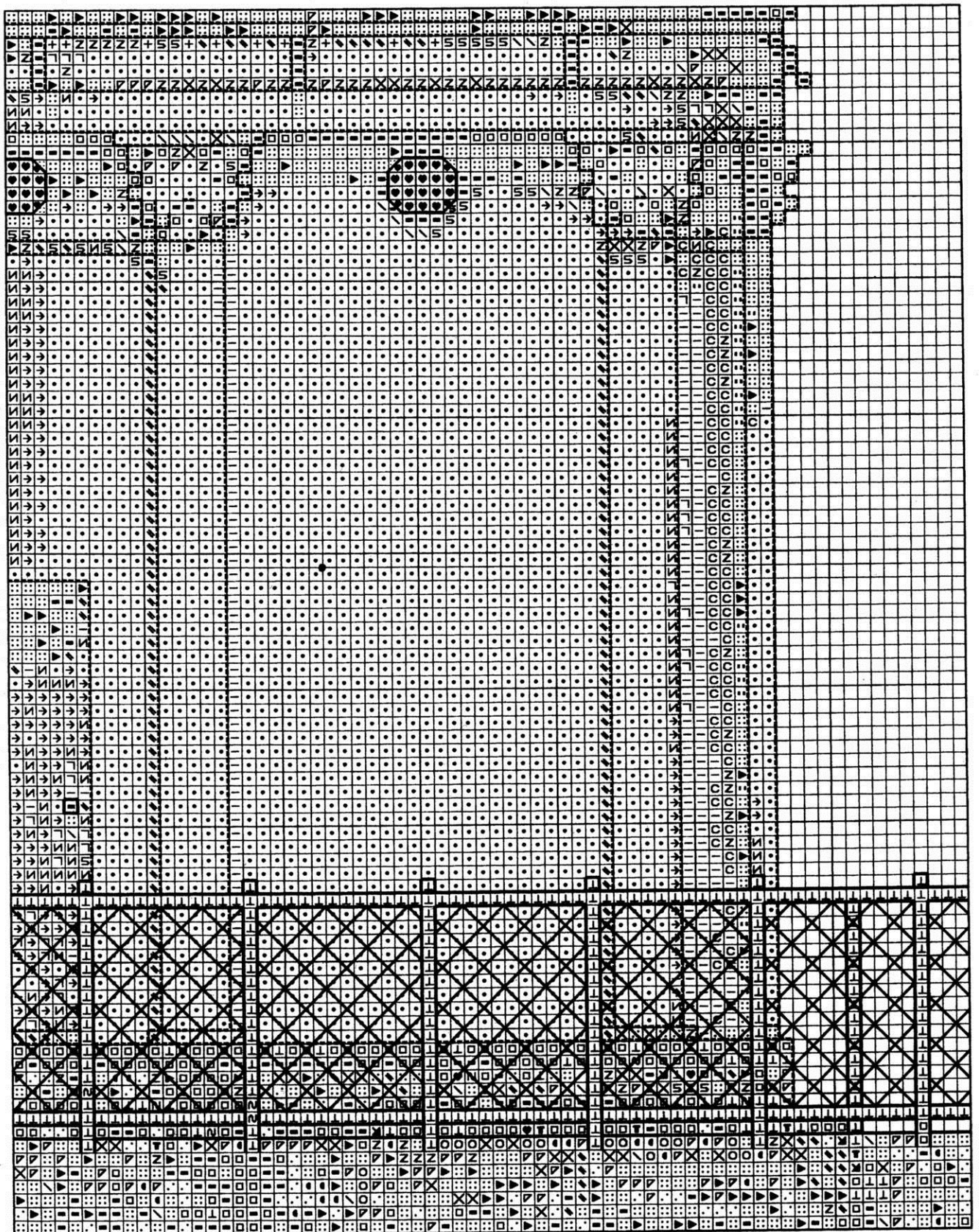
Counted Cross Stitch Patterns and Designs

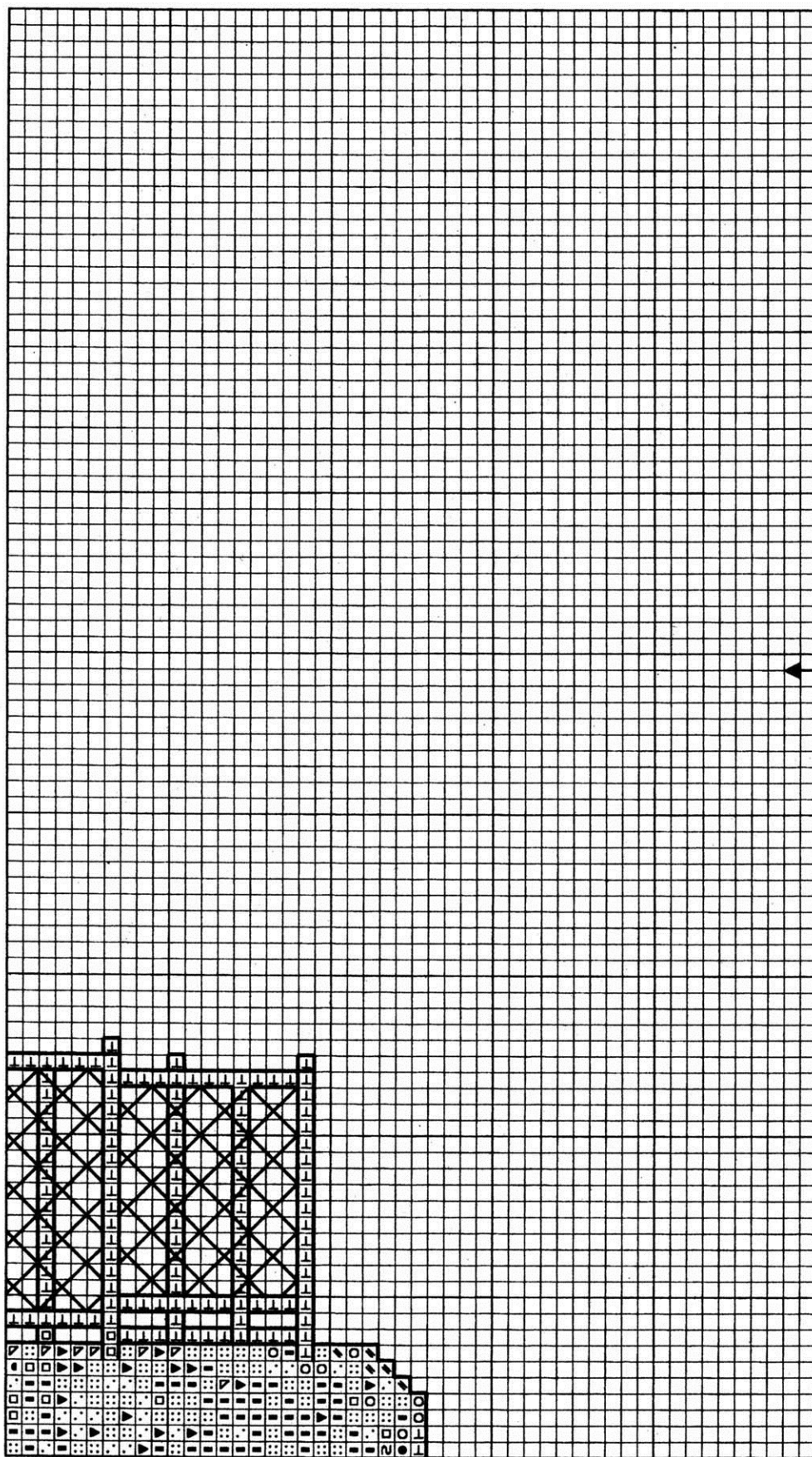
P.O. Box 1051, Orangevale, CA 95662 (916) 780-0272

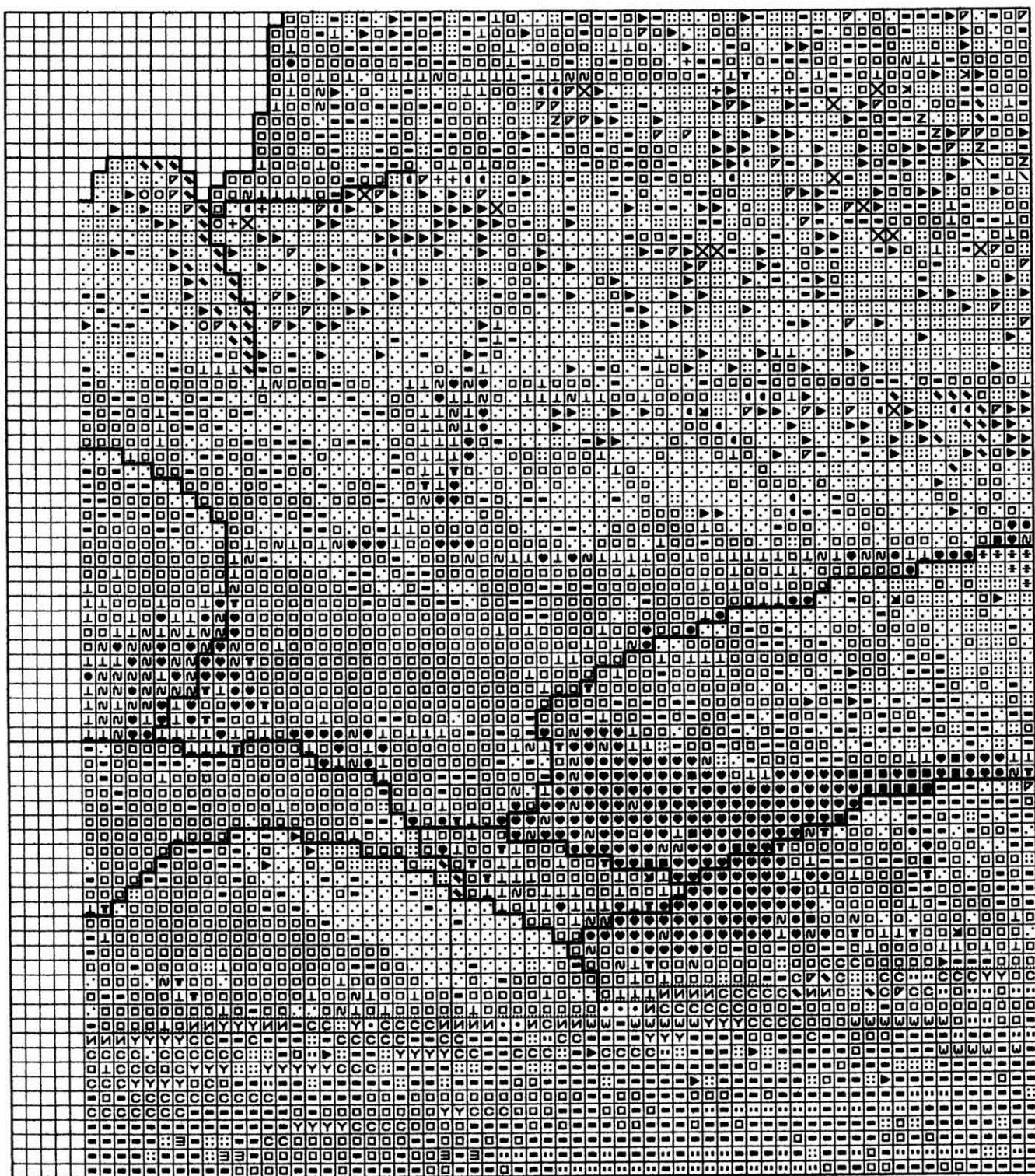
SL 73

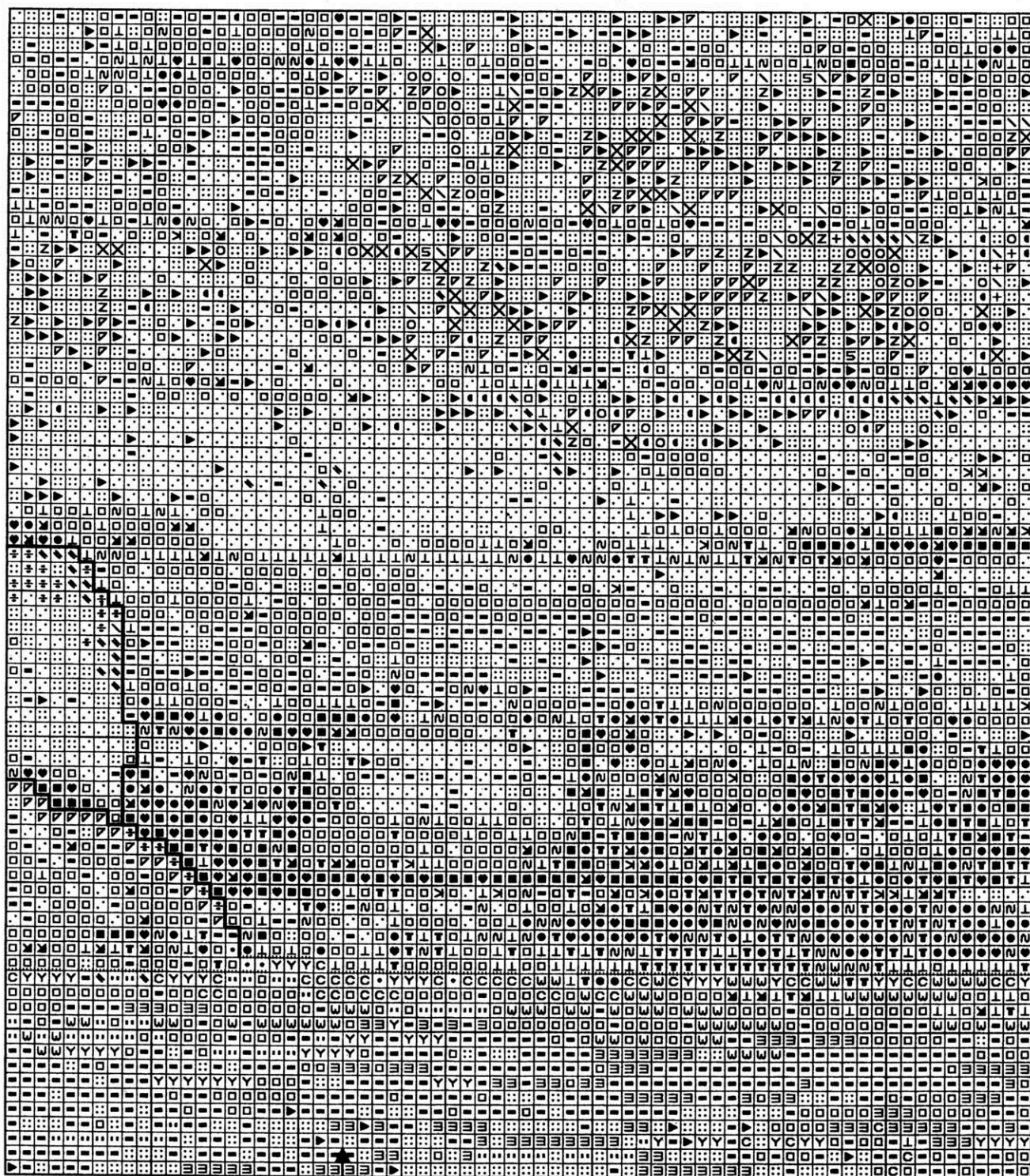






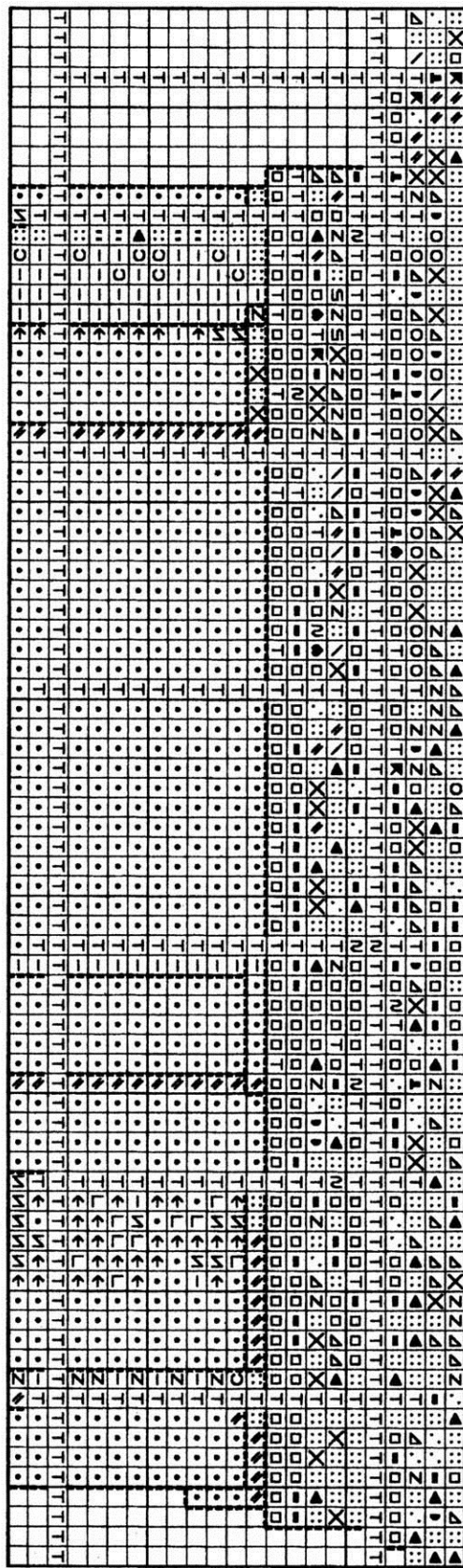






Portland Breakwater Light was built in 1855.

Nicknamed "Bug Light" it was rebuilt in 1875.
It was extinguished in 1942 and restored in 1989

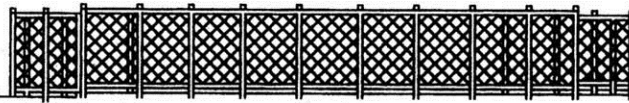
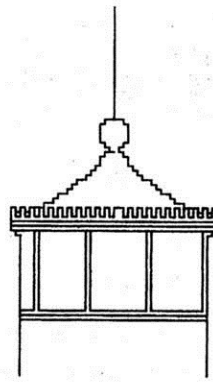


The above section is included to help see the symbols without the dark backstitching covering them up.

This is the bottom part of the lighthouse behind the railing.

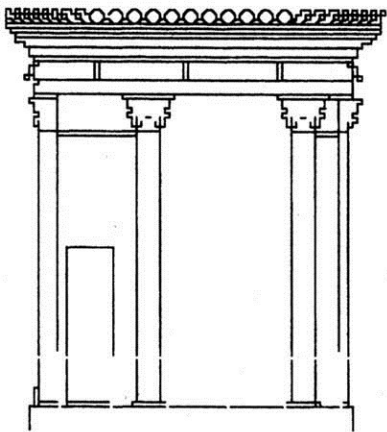
Finish all this before doing the railing and fence backstitching.

"Portland Breakwater Light" is the first one in a series of
East Coast Lighthouses from my trip to New England fall of 1999



**Backstitch this area with DMC : 3371
or ANCHOR : 328**

**Backstitch this area with DMC : 317
or ANCHOR : 400**



**Backstitch this area with DMC : Blanc
or ANCHOR : 2**

