



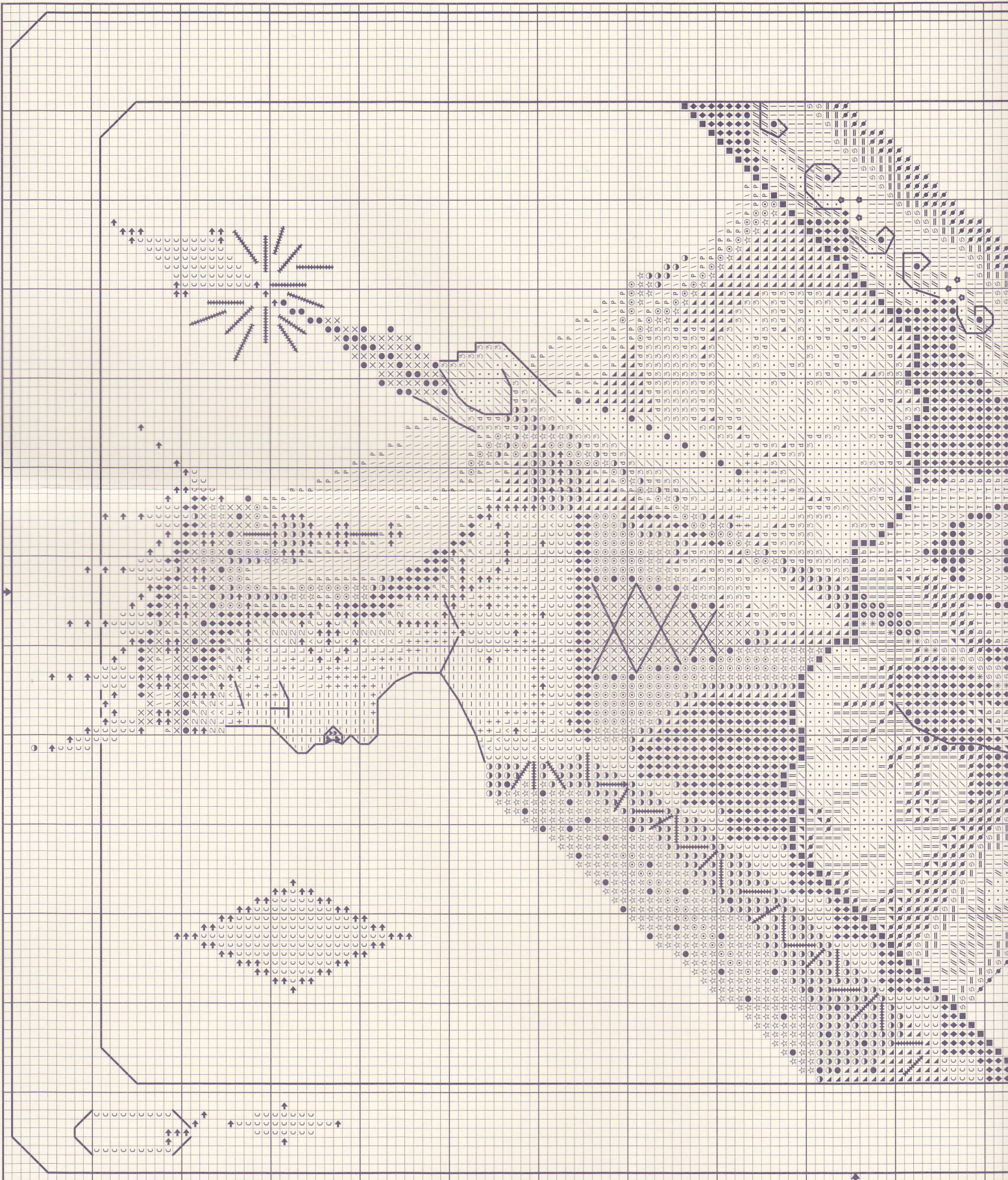
MIRABILIA

cross-stitch

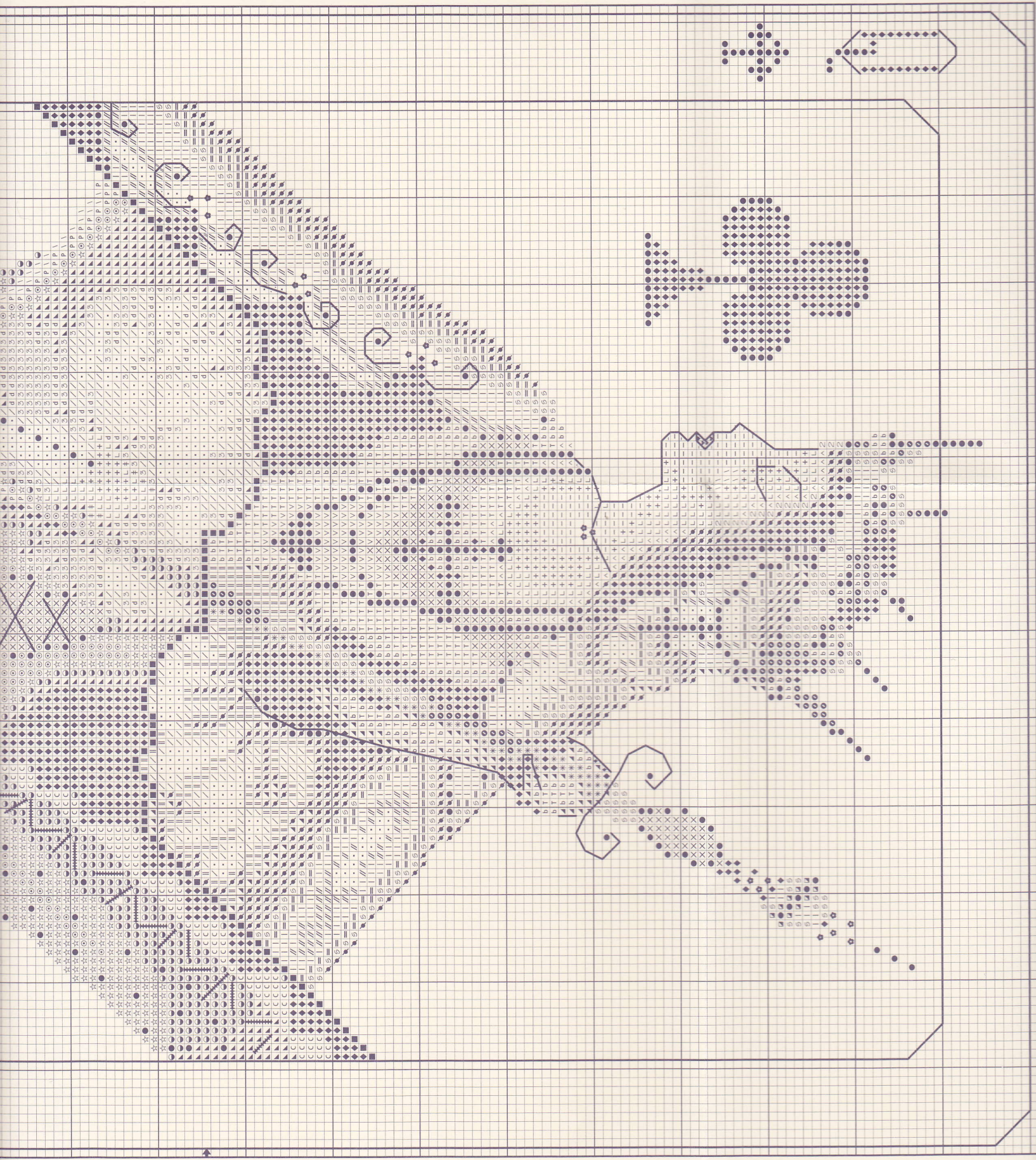


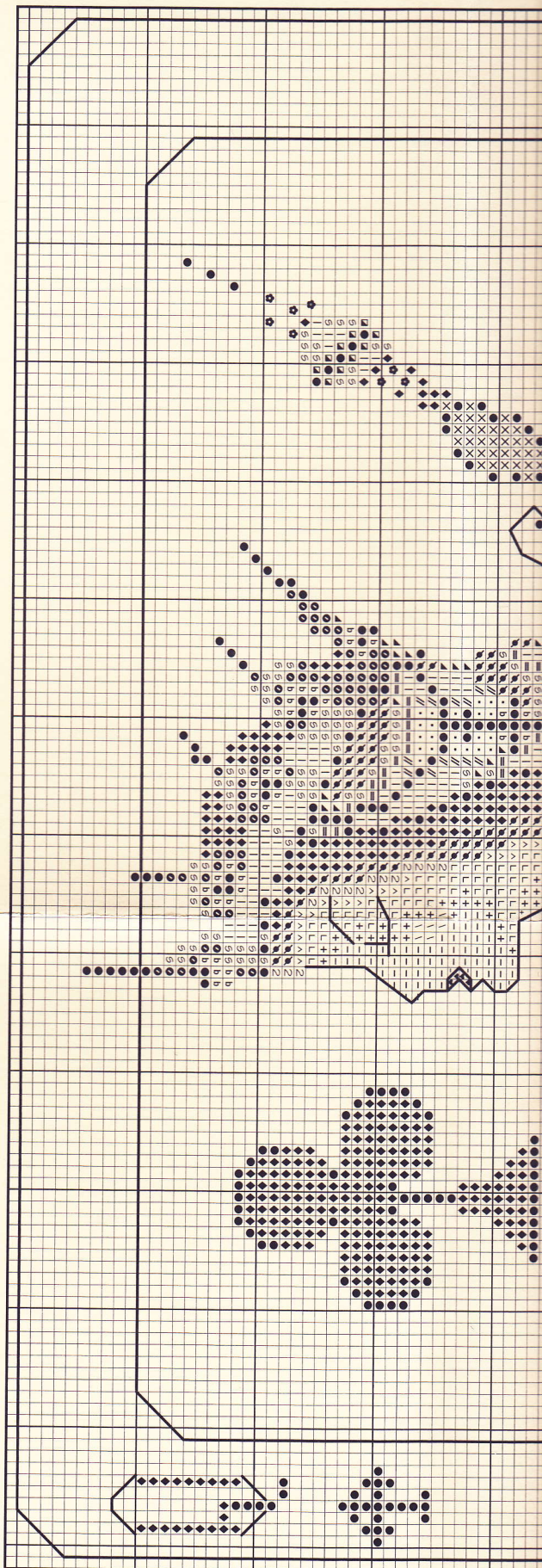
red border. Flip the fabric and re-stitch the same half.

(♠ ♣ ♣ ♠ ♣ ♠ ♠) jny pdded fun!



To create a card with the same suit (♦ or ♣), stitch the design
Stitch the shared border. Flip the fabric and re-stitch the





Royal Games II by Nora Corbett

Read more about *Royal Games II* on the inside!

Model stitched on 32 count Optical White Linen (65-20) by Wichelt Imports.

Alternate fabric 16 count White (355-1) by Wichelt Imports.

Stitched area is 8.125" w x 11.81" h with a stitch count of 130 x 189. Stitched 2 over 2.

DMC FLOSS		
154	632*	2 975
T 156	♥ 718	5 992
b 161	L 754	‡ 3064
169	^ 758	d 3740
◆ 310+	● 814	/ 3743
317	/// 828	V 3747
☆ 326	♂ 898	* 3750
3 451	- 948	▲ 3799
1 605	964	◎ 3805

DMC BLENDS		KREINIK #4 BRAID
317/992	=	C 421
+ 754/948		X 3228

MILL HILL BEADS	
● 02014(2)	□ 02074
	➔ 03049(2)
	⊗ 16014
	++++72052

* Alternative: Kreinik #4 braid 100HL for club and letter "Q".
* Used in backstitch only.

() Estimated multiple skeins or packs needed.

■ Indicates shared border between designs.
Stitch DMC 310.



* 8 4 2 1 1 2 1 1 5 8 8 9 *

Royal Games II by Nora Corbett
Copyright ©2017 Mirabilia Designs
All rights reserved.



Stoddard, WI 54658

www.mirabilia.com - www.wichelt.com

Royal Games II

"Off with their heads!" "Let them eat cake!"

Bow Down! "Kiss the Rings!"

With great pleasure, we present to you

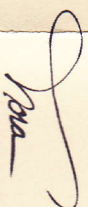
the *Queen of Diamonds* and the *Queen of Clubs*.

They join their sisters from the previous

Mirabilia pattern "Royal Games I" (MD150).

They too can be stitched as
two single cards or as pictured.

They are now a full court of lovely
powerful and wise rulers.



MIRABILIA



DESIGNS™

Backstitching Instructions

one strand DMC 310 necklaces
one strand DMC 632 skin and eyelid
one strand DMC 898 eyebrow
one strand DMC 3834 lips
two strands DMC 310 eyelashes
two strands DMC 3799 borders of card

Queen of Diamonds

one strand DMC 3740 glove
one strand Kreinik#4 - 421 .. letter "Q"
two strands DMC 310 laces on bodice

Queen of Clubs

one strand DMC 310 swirls on cape, letter "Q"
one strand DMC 3747 gloves

Other Instructions

Cross stitch DMC with two strands.
Kreinik #4 braid is stitched with 1 strand.
Blends are stitched with 1 strand of each indicated color.

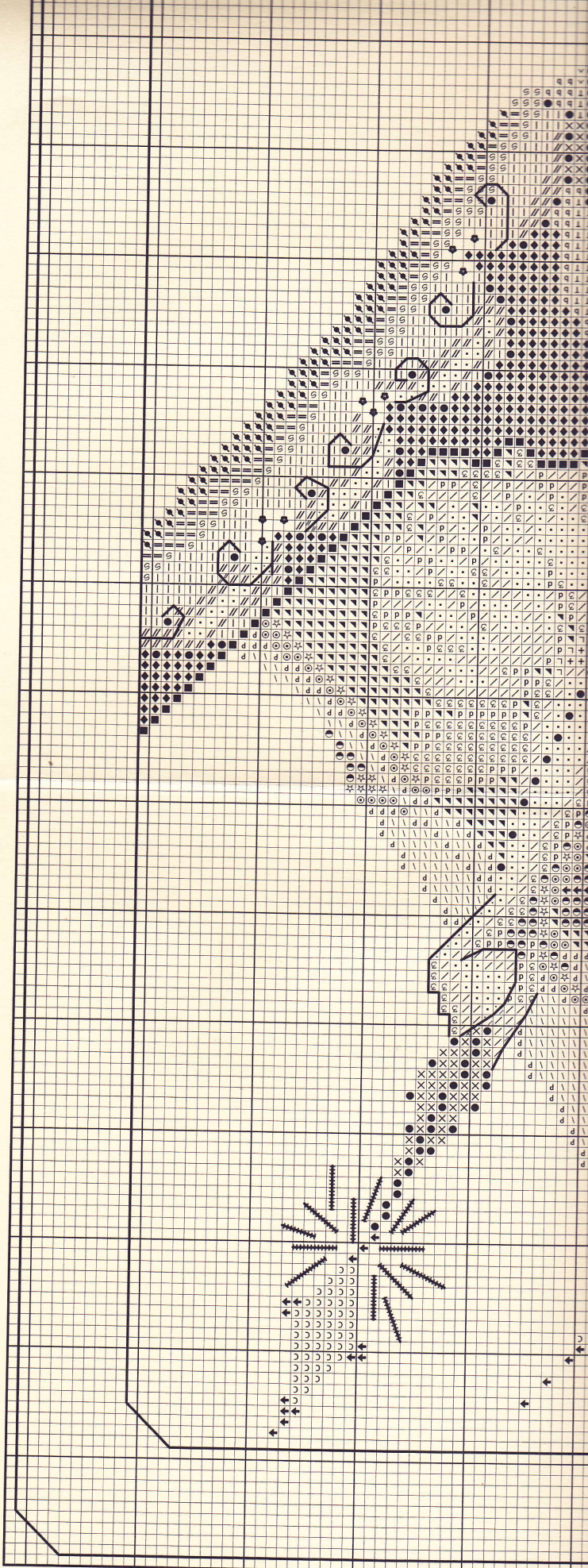
Large symbols indicate full cross stitches.
Small symbols indicate quarter stitches.
Attach beads with two strands matching floss or
one strand YLI Invisible Thread using a half cross stitch.
For best results use a #10 beading needle.

Supply Source(s)

Fabric, Fibers, and Mill Hill Beads
www.wichelt.com

Due to the printing process and dye lot changes,
slight color variation may occur.

To view current Mirabilia Designs and any chart updates,
visit www.mirabilia.com



To create a card with the same suit (♦ or ♣), stitch the desired half to the shared border (■).
Stitch the shared border. Flip the fabric and re-stitch the same half.

Mix up the suits for added fun! (♥♦, ♠♣, ♥♠, ♣♦)