

Baby Face - Blue



* Original image copyright of Jamey Ekins. Cross Stitch Design by Tereena Clarke.

Completed Size = 200w X 157h Stitches

14 Count, 14.5w X 11.5h inches

16 Count, 12.5w X 10h inches

18 Count, 11.5w X 9h inches

Uses 29 DMC cotton colours. Only full cross stitches are used in this pattern.

Pattern Instructions

* This pattern can be worked on any fabric type, colour or count you prefer. To work out the size of the finished article, take the number of stitches wide and high and divide it by the count of your fabric (e.14,16,18 count aida etc) to get the size in inches. Times it by 2.54 to get centimetres. We have the sizes in inches shown on the previous page. Also leave at least a few inches of fabric around each side of the design to assist in framing. The higher the fabric count the smaller the completed project will be.

* To put the pattern together look in the top and bottom corners. The page numbers in brackets show which page number it joins up to. Page 1 always starts at the top left hand side of the pattern. Our pages also have a shaded grey section. This indicates a 3 row overlap from adjoining pages to assist with reading the pattern. PLEASE DO NOT RESTITCH THIS AREA.

* You should begin at the centre of the pattern. To find the centre of the pattern it is just a matter of laying the pattern out and locating the arrows at the top and left hand side of the patterns, they are determined by dividing the stitch numbers wide and high in half. Where the two points meet in the middle, that is the centre.

* If you need more assistance to find the middle of your pattern or the page layout, please see the notes section on the colour symbol chart. The easiest way to stitch this pattern, as it has multiple pages, is to stitch one page at a time.

* We suggest using two strands of floss for each stitch and one strand for backstitching if the pattern calls for it.

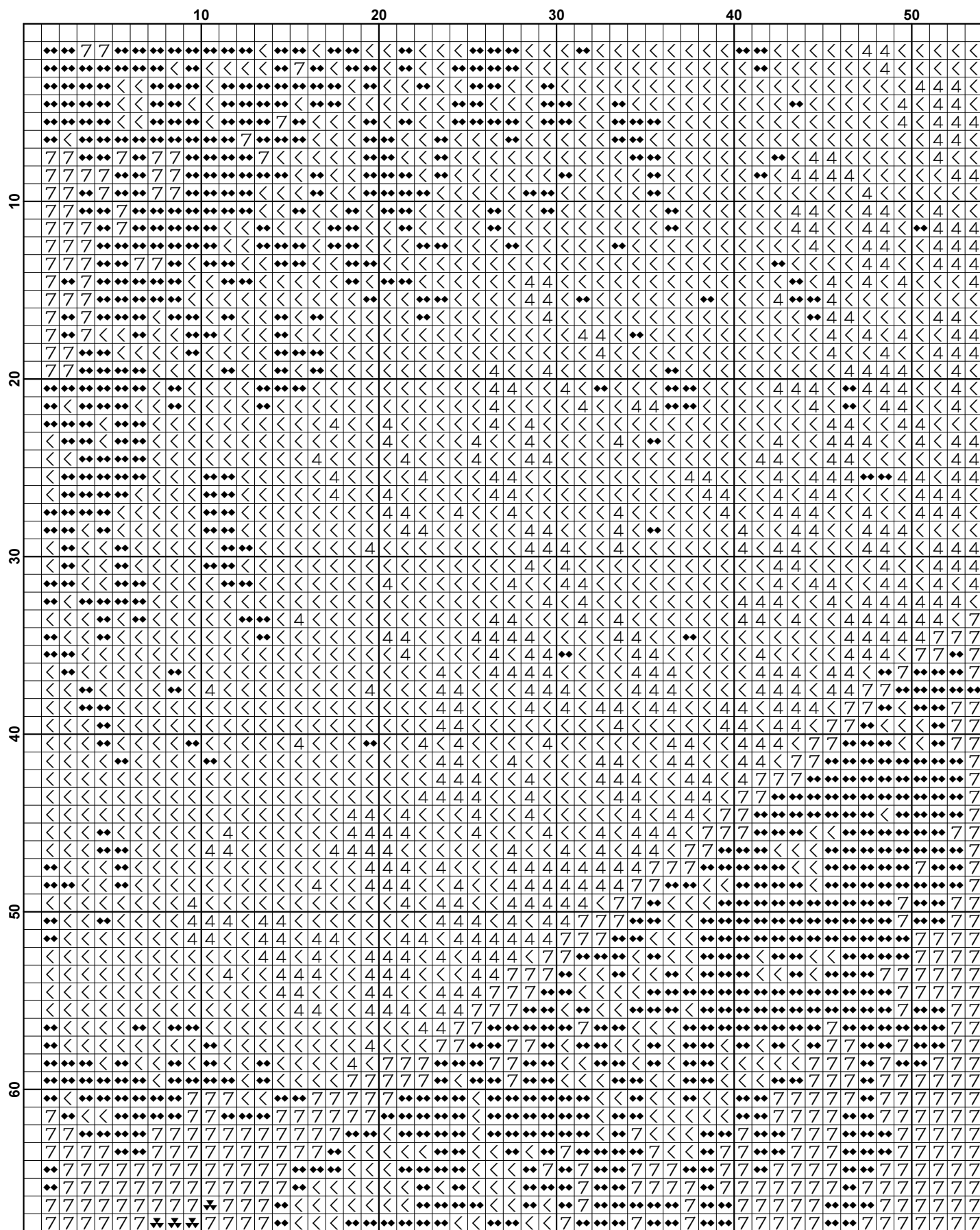
We hope you enjoy stitching our pattern.

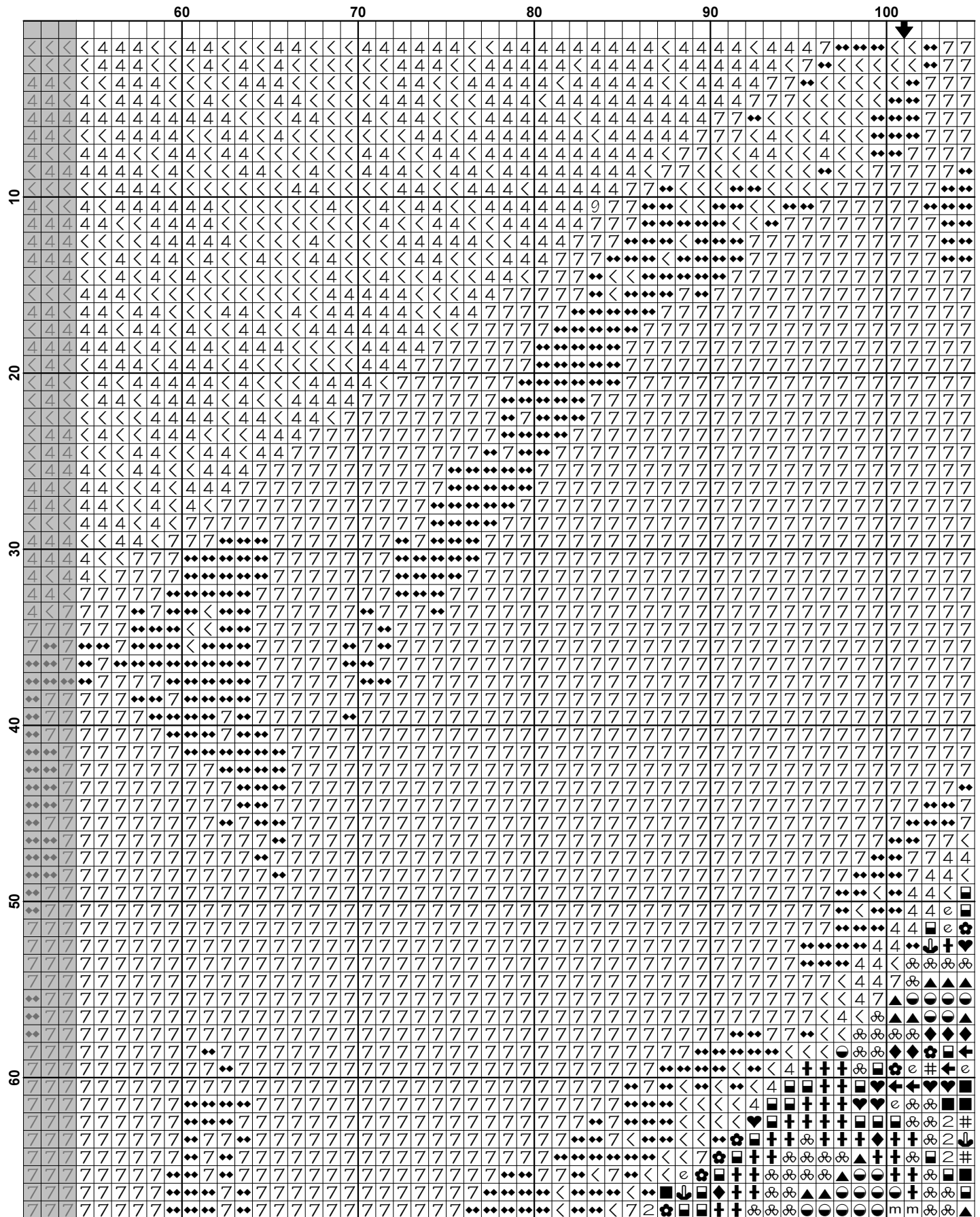
Thanks and Best Wishes
Tereena Clarke

Artecy Cross Stitch
Po Box 3474
Tuggerah, NSW 2259
Australia

Website: www.artecy.com
Email: artecy@artecy.com or sls@comcen.com.au

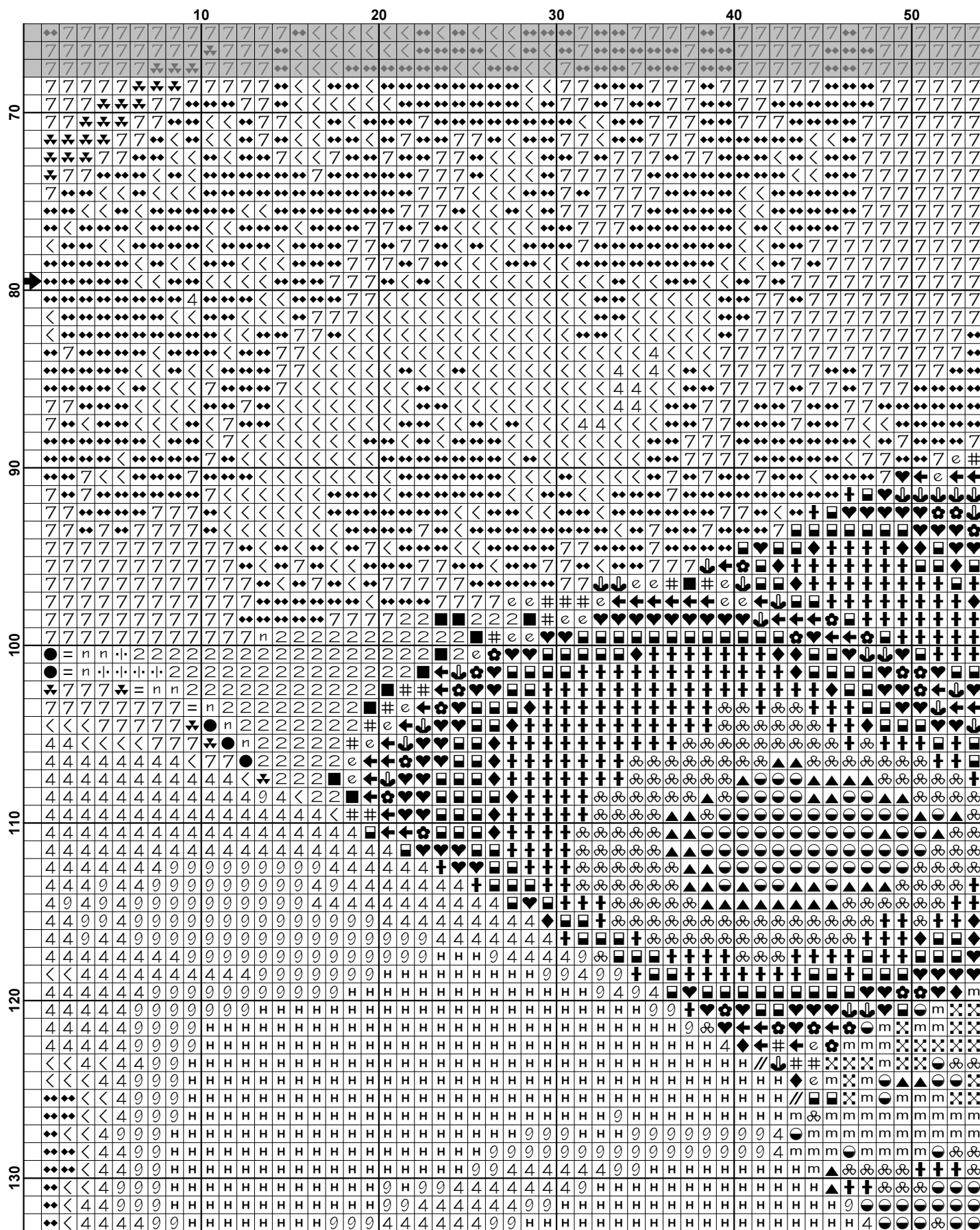
*Patterns are strictly for personal use only. It is against our copyright to make kits for sale from our designs or to sell, copy or redistribute this pattern in any form. You may not upload our patterns to any internet forums or groups or any other website. You may make 1 copy of this pattern for a working copy for your own personal use if needed.

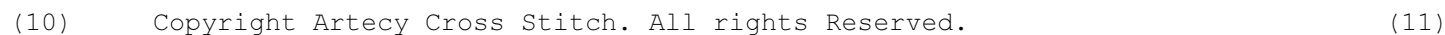


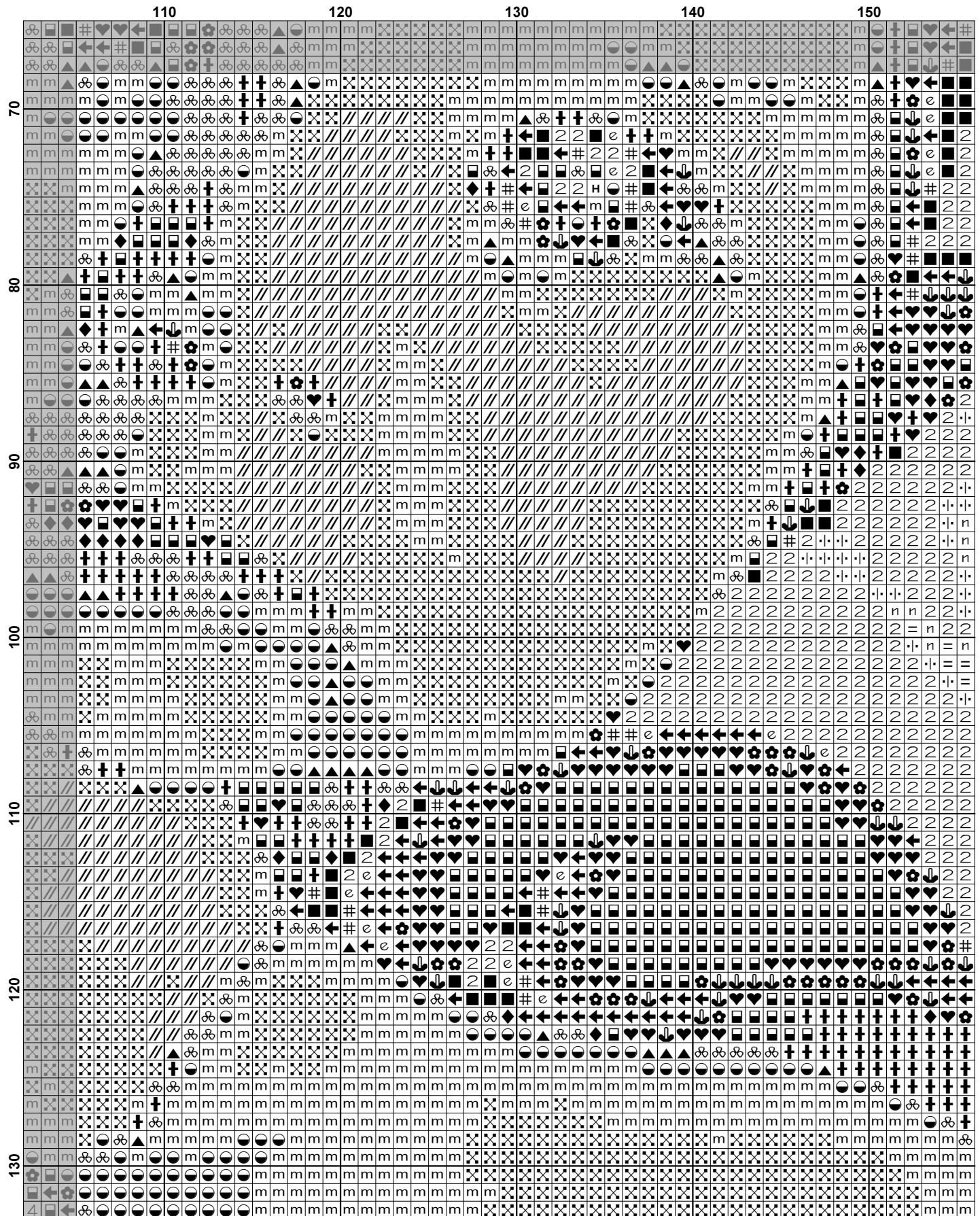


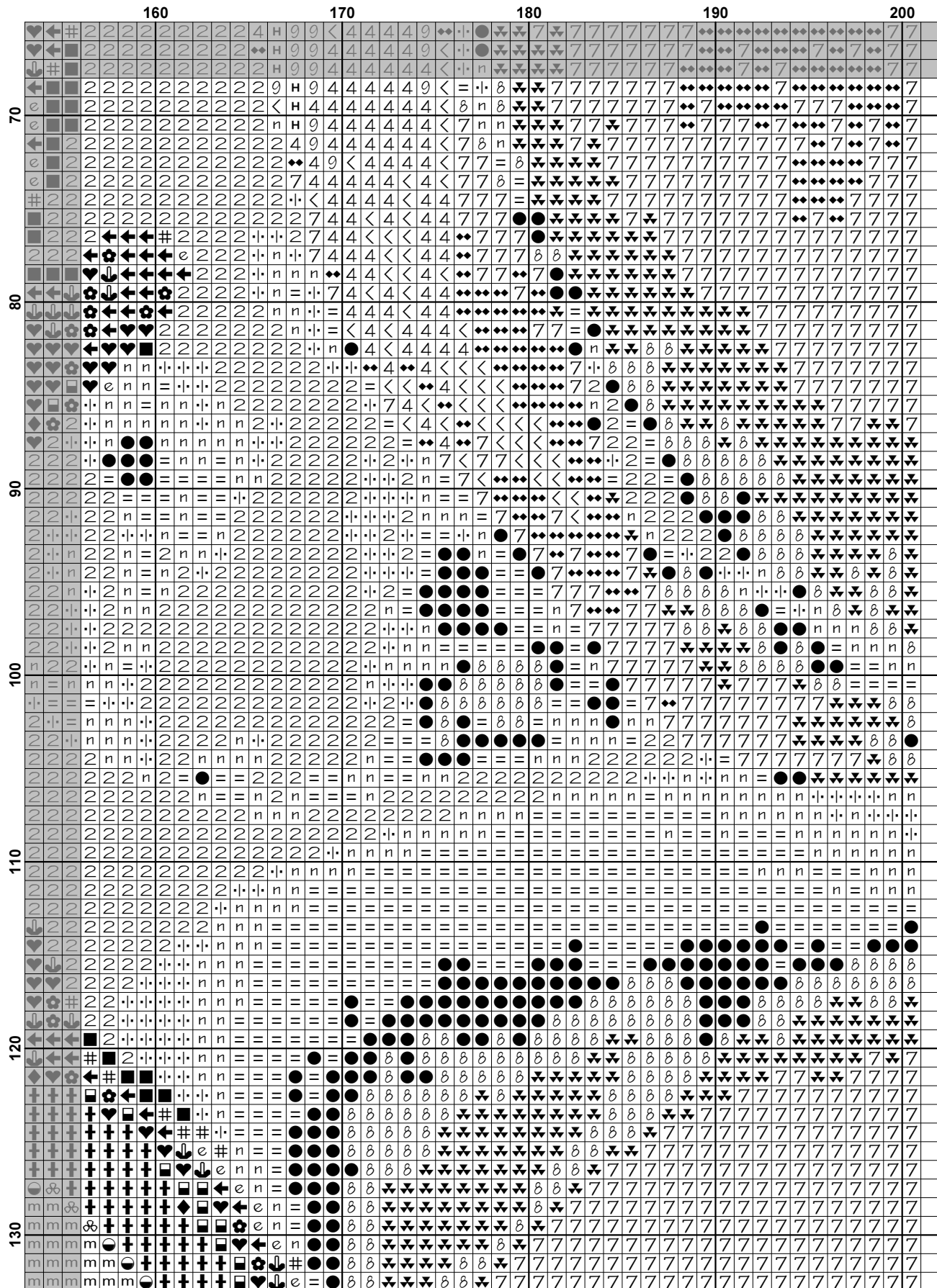
[illegible]

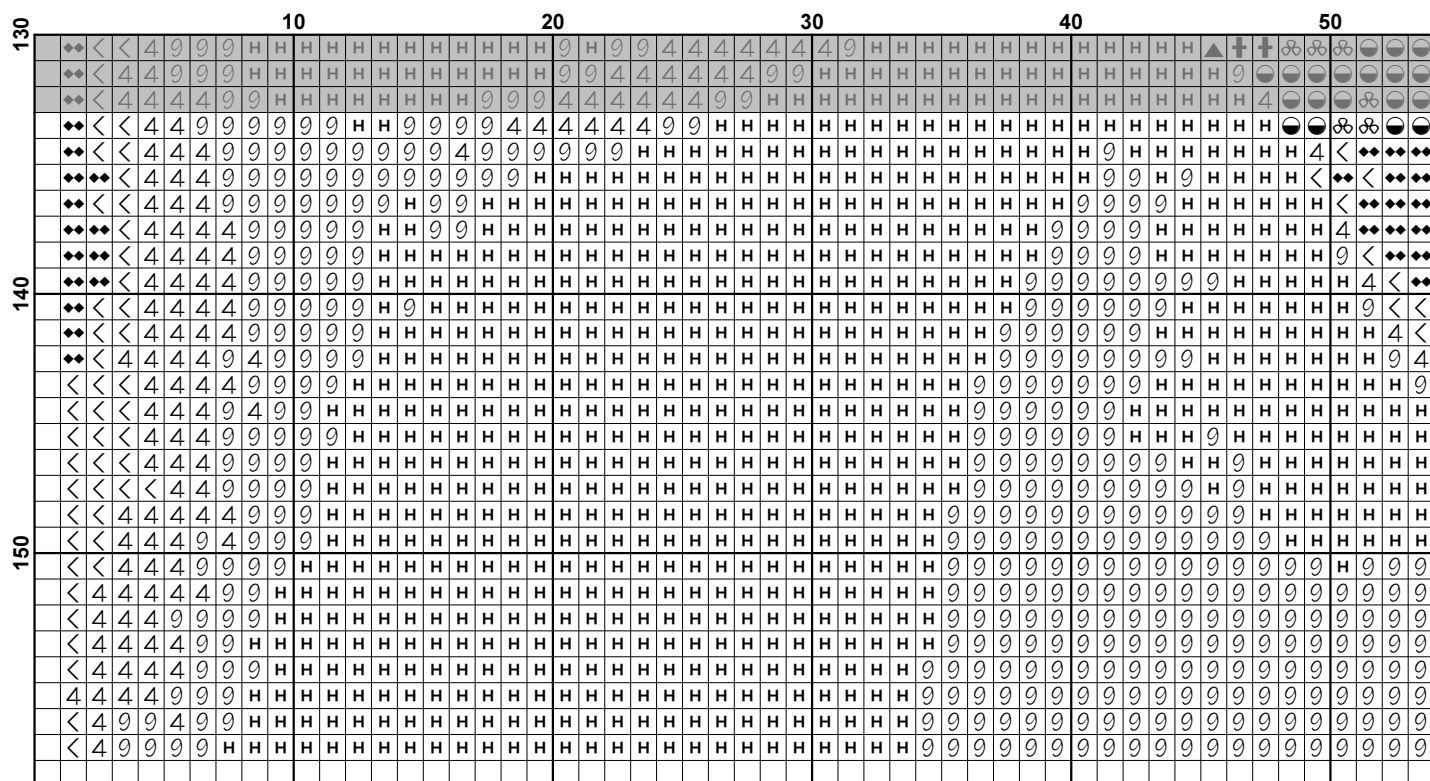
[illegible]

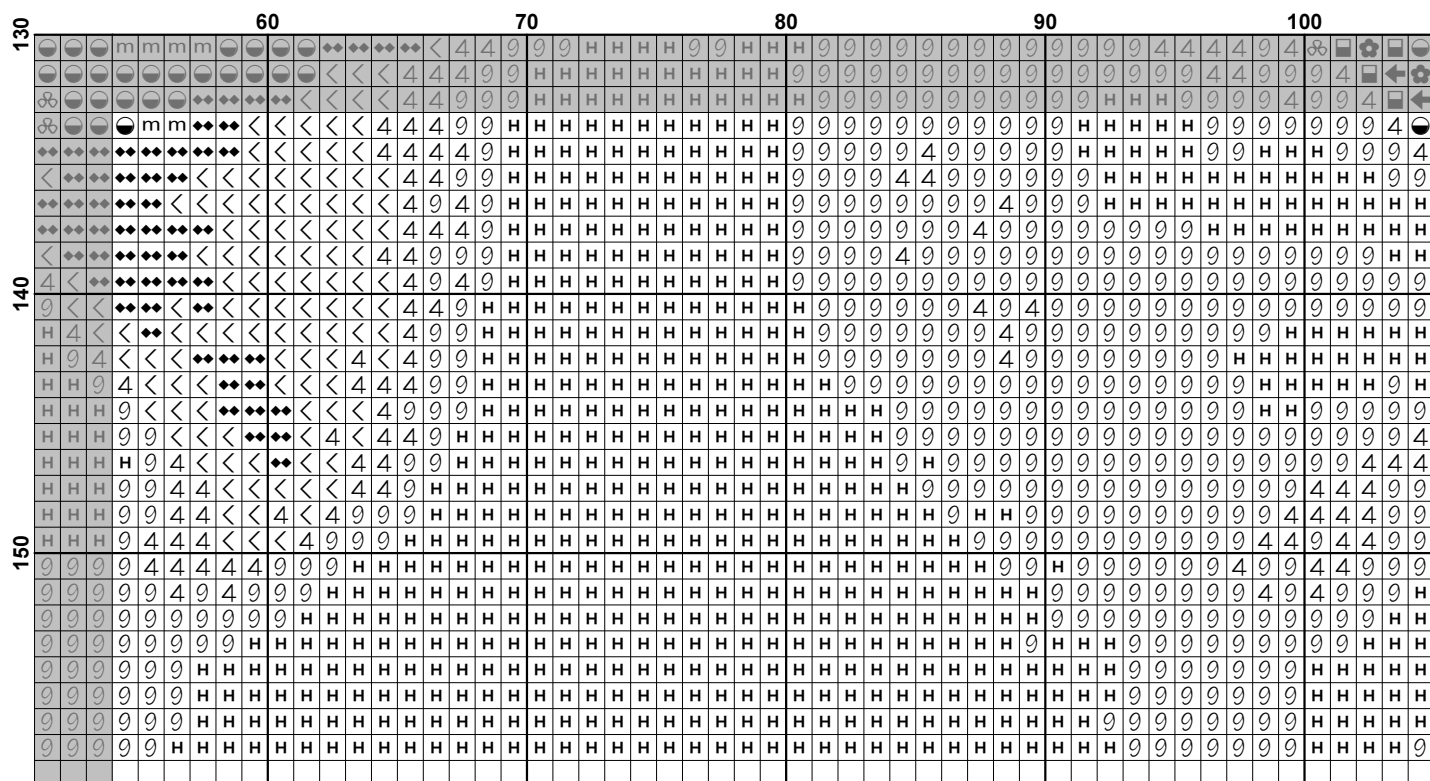


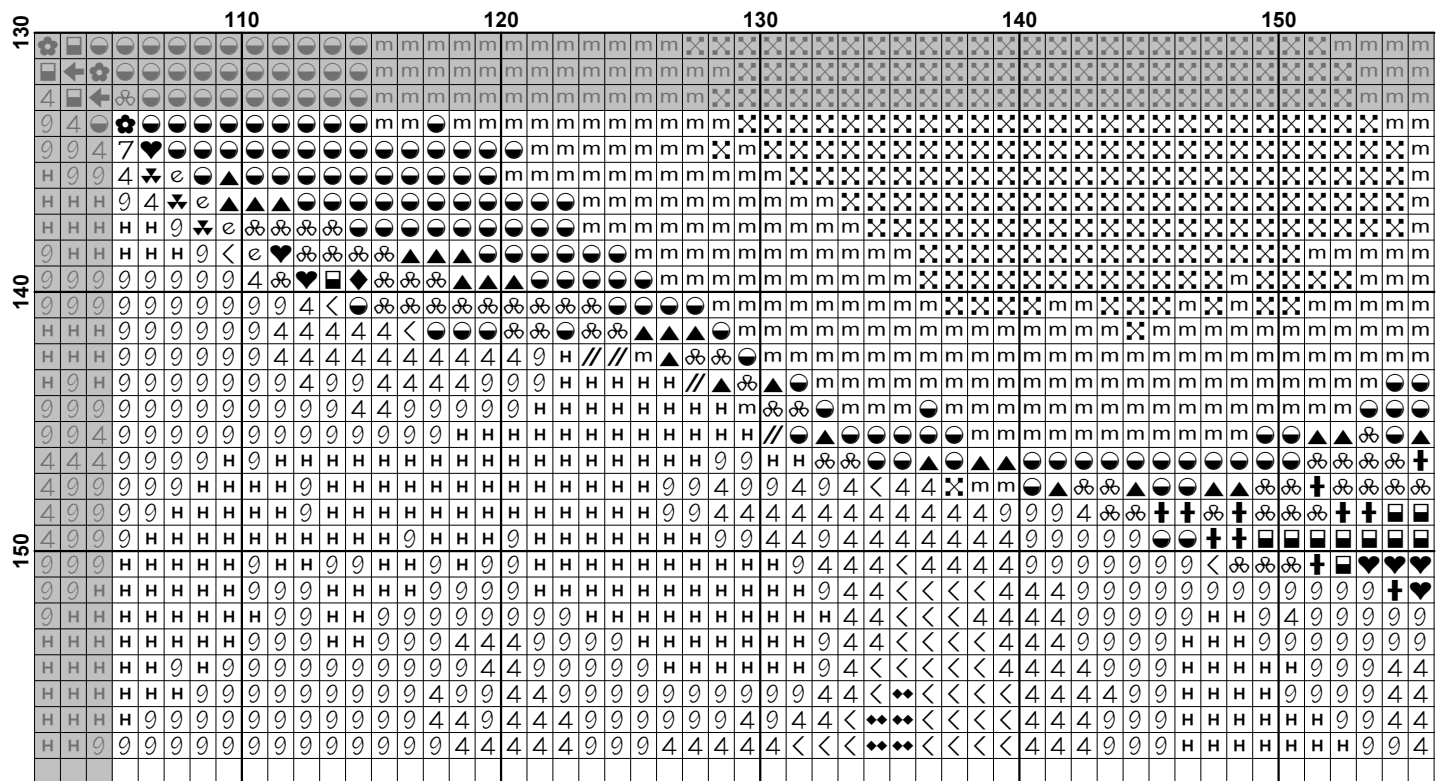


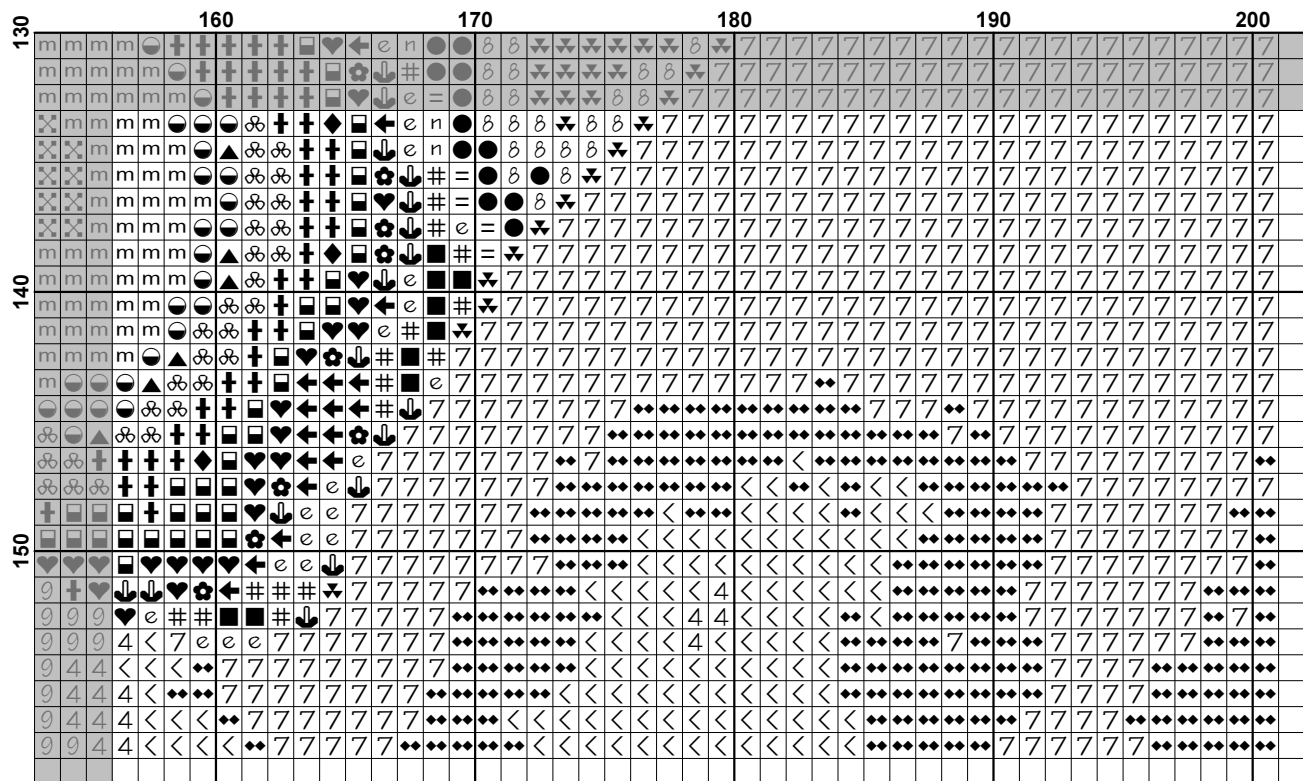



















Pattern Name: Baby Face - Blue
Designed By: Photo by Jamey Ekins - Fotolia
Company: Artecy Cross Stitch
Copyright: Copyright Artecy Cross Stitch. All rights Reserved.
Fabric: Aida 14, White
 200w X 157h Stitches
Size(s): 14 Count, 14-1/4w X 11-1/8h in
 16 Count, 12-1/2w X 9-3/4h in
 18 Count, 11w X 8-5/8h in

Floss Used for Full Stitches:

Symbol	Strands	Type	Number	Color
	2	DMC	310	Black
	=	DMC	311	Navy Blue-MD
	2	DMC	312	Baby Blue-VY DK
	2	DMC	322	Baby Blue-DK
	2	DMC	334	Baby Blue-MD
	2	DMC	336	Navy Blue
	2	DMC	543	Beige Brown-UL VY LT
	2	DMC	610	Drab Brown-DK
	2	DMC	640	Beige Gray-VY DK
	2	DMC	775	Baby Blue-VY LT
	2	DMC	823	Navy Blue-DK
	2	DMC	838	Beige Brown-VY DK
	2	DMC	839	Beige Brown-DK
	2	DMC	840	Beige Brown-MD
	2	DMC	841	Beige Brown-LT
	2	DMC	842	Beige Brown-VY LT
	2	DMC	938	Coffee Brown-UL DK
	2	DMC	3031	Mocha Brown-VY DK
	2	DMC	3325	Baby Blue-LT
	2	DMC	3371	Black Brown
	2	DMC	3755	Baby Blue
	2	DMC	3756	Baby Blue-UL VY LT
	2	DMC	3770	Tawny-VY LT
	2	DMC	3781	Mocha Brown-DK
	2	DMC	3782	Mocha Brown-LT
	2	DMC	3790	Beige Gray-UL DK
	2	DMC	3841	Baby Blue-Pale
	2	DMC	3864	Mocha Beige-LT
	2	DMC	3865	Winter White

Notes:

The middle of this pattern can be found on page 6 and is 101 stitches across and 80 stitches down.

Pattern layout using page numbers in top left.

1 2 3 4
 5 6 7 8
 9 10 11 12

Usage Summary

Strands Per Skein: 6

Skein Length: 313.0 in

Type	Number	Full	Half	Quarter	Petite	Back(in)	Str(in)	Spec(in)	French	Bead	Skein Est.
■ DMC	310	1583	0	0	0	0.0	0.0	0.0	0	0	1.000
■ DMC	311	397	0	0	0	0.0	0.0	0.0	0	0	1.000
■ DMC	312	228	0	0	0	0.0	0.0	0.0	0	0	1.000
■ DMC	322	280	0	0	0	0.0	0.0	0.0	0	0	1.000
■ DMC	334	448	0	0	0	0.0	0.0	0.0	0	0	1.000
■ DMC	336	276	0	0	0	0.0	0.0	0.0	0	0	1.000
■ DMC	543	1377	0	0	0	0.0	0.0	0.0	0	0	1.000
■ DMC	610	466	0	0	0	0.0	0.0	0.0	0	0	1.000
■ DMC	640	744	0	0	0	0.0	0.0	0.0	0	0	1.000
■ DMC	775	2353	0	0	0	0.0	0.0	0.0	0	0	2.000
■ DMC	823	178	0	0	0	0.0	0.0	0.0	0	0	1.000
■ DMC	838	524	0	0	0	0.0	0.0	0.0	0	0	1.000
■ DMC	839	202	0	0	0	0.0	0.0	0.0	0	0	1.000
■ DMC	840	100	0	0	0	0.0	0.0	0.0	0	0	1.000
■ DMC	841	733	0	0	0	0.0	0.0	0.0	0	0	1.000
■ DMC	842	1425	0	0	0	0.0	0.0	0.0	0	0	1.000
■ DMC	938	276	0	0	0	0.0	0.0	0.0	0	0	1.000
■ DMC	3031	257	0	0	0	0.0	0.0	0.0	0	0	1.000
■ DMC	3325	3273	0	0	0	0.0	0.0	0.0	0	0	2.000
■ DMC	3371	283	0	0	0	0.0	0.0	0.0	0	0	1.000
■ DMC	3755	5203	0	0	0	0.0	0.0	0.0	0	0	3.000
■ DMC	3756	2438	0	0	0	0.0	0.0	0.0	0	0	2.000
■ DMC	3770	492	0	0	0	0.0	0.0	0.0	0	0	1.000
■ DMC	3781	211	0	0	0	0.0	0.0	0.0	0	0	1.000
■ DMC	3782	730	0	0	0	0.0	0.0	0.0	0	0	1.000
■ DMC	3790	845	0	0	0	0.0	0.0	0.0	0	0	1.000
■ DMC	3841	3719	0	0	0	0.0	0.0	0.0	0	0	2.000
■ DMC	3864	228	0	0	0	0.0	0.0	0.0	0	0	1.000
■ DMC	3865	2131	0	0	0	0.0	0.0	0.0	0	0	1.000