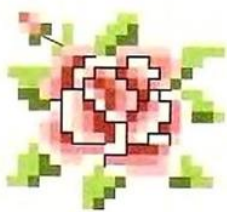




Roses

Wedding Ensemble



Commemorate the happiest day in a couple's lives by stitching a personalized set just for them. The wedding album and photo frame will protect and showcase photos of the event for years to come.

Fabric

One 14" x 18" (35.6cm x 45.7cm) piece of Blue Hearts 14ct. Impressions Aida cloth by DMC® for photo album

One 14" x 18" (35.6cm x 45.7cm) piece of Blue Stripes 14ct. Impressions Aida cloth by DMC for photo frame

Photo Album Design Size

14ct. = 5 3/4" x 7 3/4" (14.6cm x 19.7cm)

Photo Frame Design Size

14ct. = 7 1/4" x 9 1/4" (18.4cm x 23.5cm)

Mill Hill® Embellishments

for Photo Album

52 Cream #00123 glass seed beads

One Winged Cherub #12113 glass treasure

One Matte Crystal AB Medium Rose

#12018 glass treasure

Mill Hill Embellishments

for Photo Frame

42 Cream #00123 glass seed beads

One Matte Crystal Medium Floral

Embellished Heart #12183 glass treasure

Finishing Materials for Photo Album

7" x 10" photo album

Two 6" x 9" pieces of self-adhesive white felt

Clear quick-dry glue

Spray adhesive

Finishing Materials for Photo Frame

7" x 10" acid-free photo mat with

4 1/2" x 6 1/2" opening (to hold a

5" x 7" photo)

General Instructions

Center the photo album design and begin stitching. Work cross-stitches with two strands of cotton embroidery floss. Work backstitches and French knots with one strand of cotton embroidery floss. Refer to the alphabet and number chart to personalize the names and date. Attach beads and glass treasures using one strand of matching floss.

For photo frame, fold the fabric to find the exact center. Measure 4" up and 3" to the left of the center point and begin stitching the center of the upper left rose corner motif from the photo album chart at this point. Measure 4" down and 3" to the left of the center point and stitch the lower right rose corner motif from the photo album chart at this point. Attach the Floral Embellished Heart glass treasure approximately 1" to the left of the upper right rose corner motif. Place the fabric pieces facedown on a terry cloth towel (to protect beads and treasures) and use a pressing cloth to carefully iron the needlework from the back.

Finishing Instructions for Photo Album

Center stitched design on the front of the album cover. Use spray adhesive to affix in place. Wrap fabric around sides and edges, trimming as necessary so only about 1" of fabric folds to the inside of the album.

Use clear quick-dry glue to affix the fabric edges in place on the inside. *Note:* The fabric dimensions do not allow for the entire album to be covered at once, so you may choose to cover the album's back

cover with another piece of needlework fabric or coordinating cotton fabric. Cover raw edges on the album's inside front and back with white felt.

Finishing Photo Frame

It is recommended that the stitched piece and photo mat be taken to a professional framer specializing in needlework for finishing.

CROSS-STITCH

DMC	COLOR
309	■ Dark Rose
319	■ Very Dark Pistachio Green
320	■ Medium Pistachio Green
814	■ Dark Garnet
961	■ Dark Dusty Rose
963	■ Ultra Very Light Dusty Rose
3716	■ Very Light Dusty Rose

FRENCH KNOT

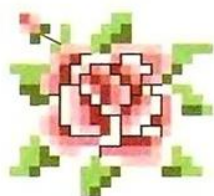
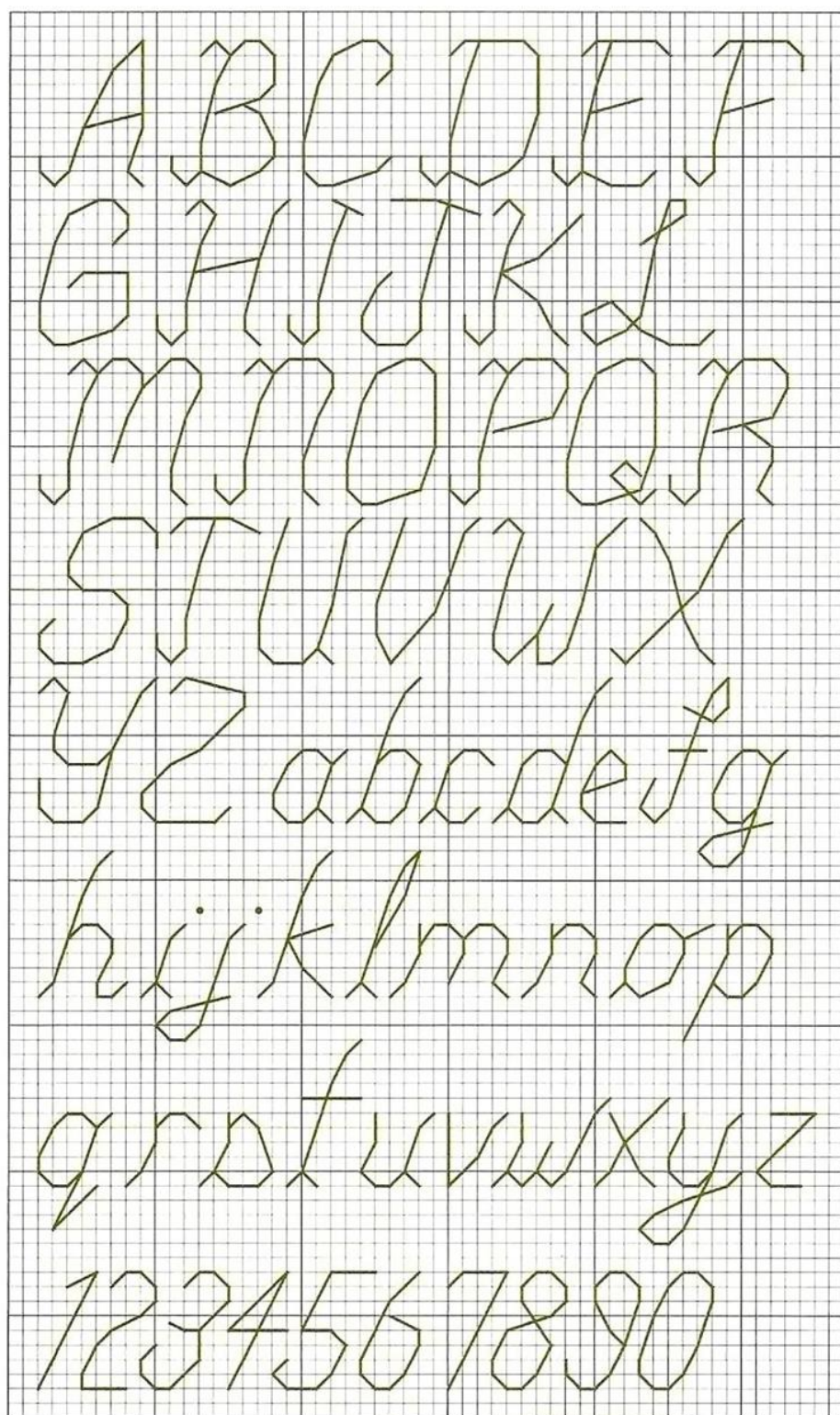
DMC	COLOR
319	• Very Dark Pistachio Green

BACKSTITCH

DMC	COLOR
319	— Very Dark Pistachio Green
814	— Dark Garnet

BEAD/TREASURE

MILL HILL GLASS SEED	COLOR
00123	● Cream
MILL HILL GLASS TREASURE	COLOR
12018	● Matte Crystal AB Medium Rose
12113	● Winged Cherub



ProjectTip

Stitching with Seed Beads

Seed beads require very fine needles that will slide through the holes. Two readily available options are a #8 quilting needle, which is short with a tiny eye, and a long beading needle, which has a longer eye.



ALTERNATE FINISHING

Rose Box

Create a lovely little gift box using the rose motif from the wedding ensemble. It's a pretty way to wrap a bridesmaid gift or to store cherished wedding jewelry.

Stitch Count

20w x 18h

Fabric

One 5" x 5" (12.7cm x 12.7cm) piece of Blue Stripes 14ct. Impressions Aida cloth by DMC®

Design Size

14ct. = 1 3/8" x 1 1/4" (3.5cm x 3.2cm)

Finishing Materials

One 2 1/2" x 2 1/2" x 1 1/2" papier-mâché box with lid

Silver decorative paper

1/4"-wide pink ribbon

Double-sided tape

Instructions

Follow the "Roses Wedding Ensemble" instructions for stitching the rose design. Trim needlework to 2" square. Cover box and lid separately using silver paper. (You may decoupage the box if desired; be sure to allow time for it to dry completely.) Center and apply the stitched design to the top of the lid using double-sided tape. Use ribbon to cover the raw edges of the fabric and create a bow.