

Gingerbread *delight*

.....
Perfect for a stitcher with a
sweet tooth, **Meg Evershed's**
beautiful festive gingerbread
house is a feast for the eyes
and for the needle!
.....





Create intricate icing on the roof, eaves and walls by stitching pretty patterns in white thread – and you'll even get to stitch a rhinestone or two with this design!

The world goes completely mad for gingerbread at Christmas. Perhaps the association started back in medieval times, when only professional bakers in guilds were allowed to make it – except at Christmas. Traditionally, this became the time when everyone was permitted to bake beautiful gingerbread creations with their families. We're certainly not immune to the Christmas gingerbread craze, so we're thrilled with Meg Evershed's beautiful 3D house design. Despite its diminutive stature – it's only 3½in tall! – Meg's design makes us feel like kids in a sweet shop, as there is so much stitching to be done. You'll stitch a series of brightly-coloured motifs like wreaths and lollipop pinwheel trees, and work with all different kinds of embellishments too. Hang pearlescent beads from the eaves like ice, add sparkling rhinestones and golden seed beads, as well as glittering metallic thread. Check out our guide to embellishing cross stitch projects on page 40 for even more delicious ideas!

Stitching your 3D house

You will need...

16HPI aida white, 15x15in (38x38cm)

Stranded cotton as listed in the key

Beads as listed in the key

Brown felt 3x2¾in (8x7cm)

7 mesh plastic canvas 10x6in (25x15cm)

Pearl bead trim 20in (50cm)

Sewing kit including matching thread

Turn to page 58 for hints and tips!

Cutting your fabric

START off by cutting your aida into the following sizes and stitch each design on the relevant piece of aida:

Walls and gables: 8x13in (20x33cm)

Roof: 7x10in (18x25cm)

Porch: 5x6in (13x15cm)

Stitching the designs

BEGIN stitching from the centre of each design.

Some of the cross stitch is worked in two strands of stranded cotton and some in one strand to add different dimensions to the design. When all the cross stitch is complete, you can add the backstitch details using one strand of stranded cotton. Refer to the chart and key to see the exact positioning of the different coloured outlines and details.

Finally, attach the seed beads, pearl bead trim and Chaton Montee rhinestones to create the sweets on the gingerbread house. Use thread to match the beads then stitch them on using a half cross stitch in the position indicated on the chart. ➤

More from The Nutmeg Company



Christmas Robin
£8.45

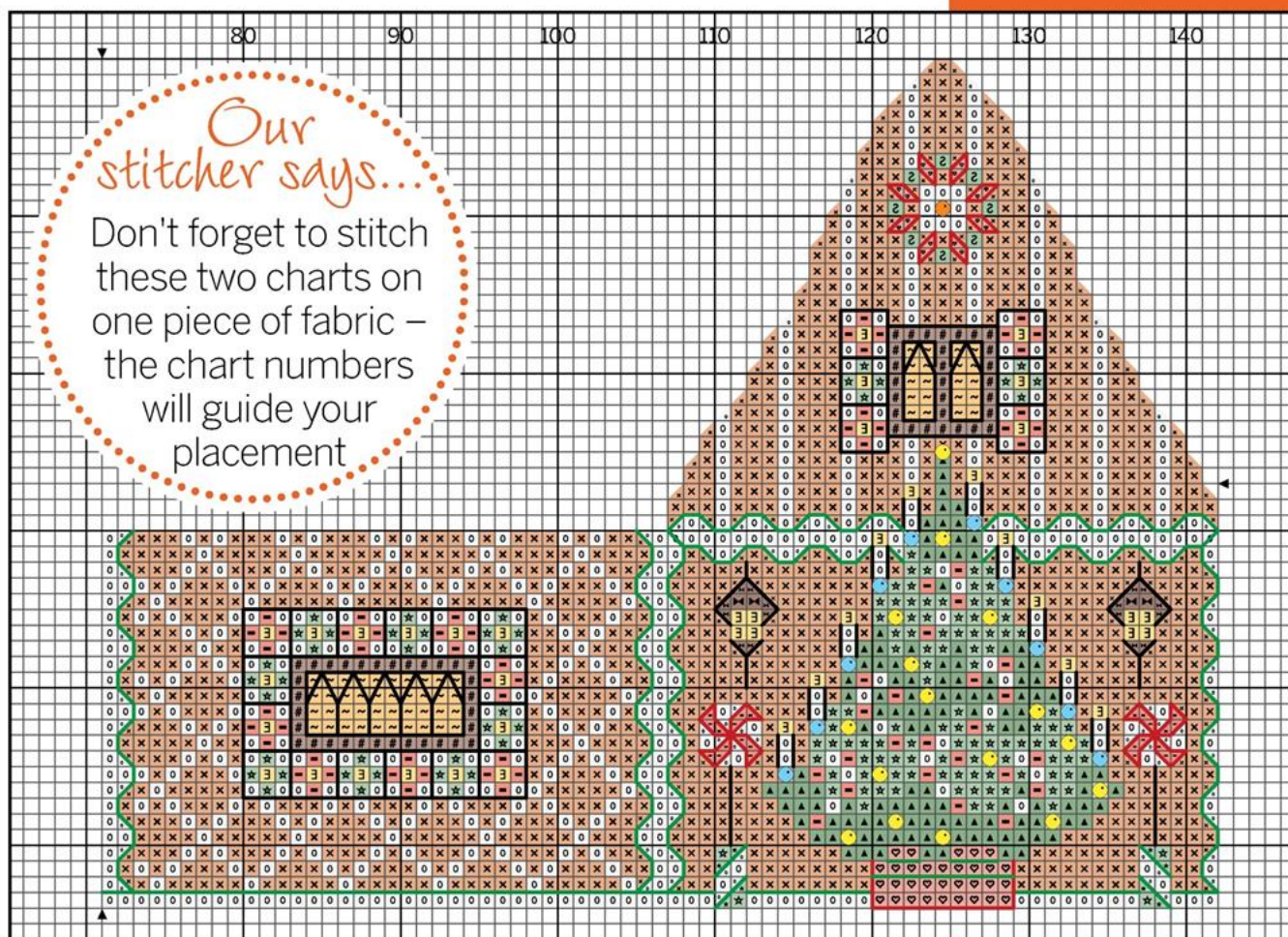
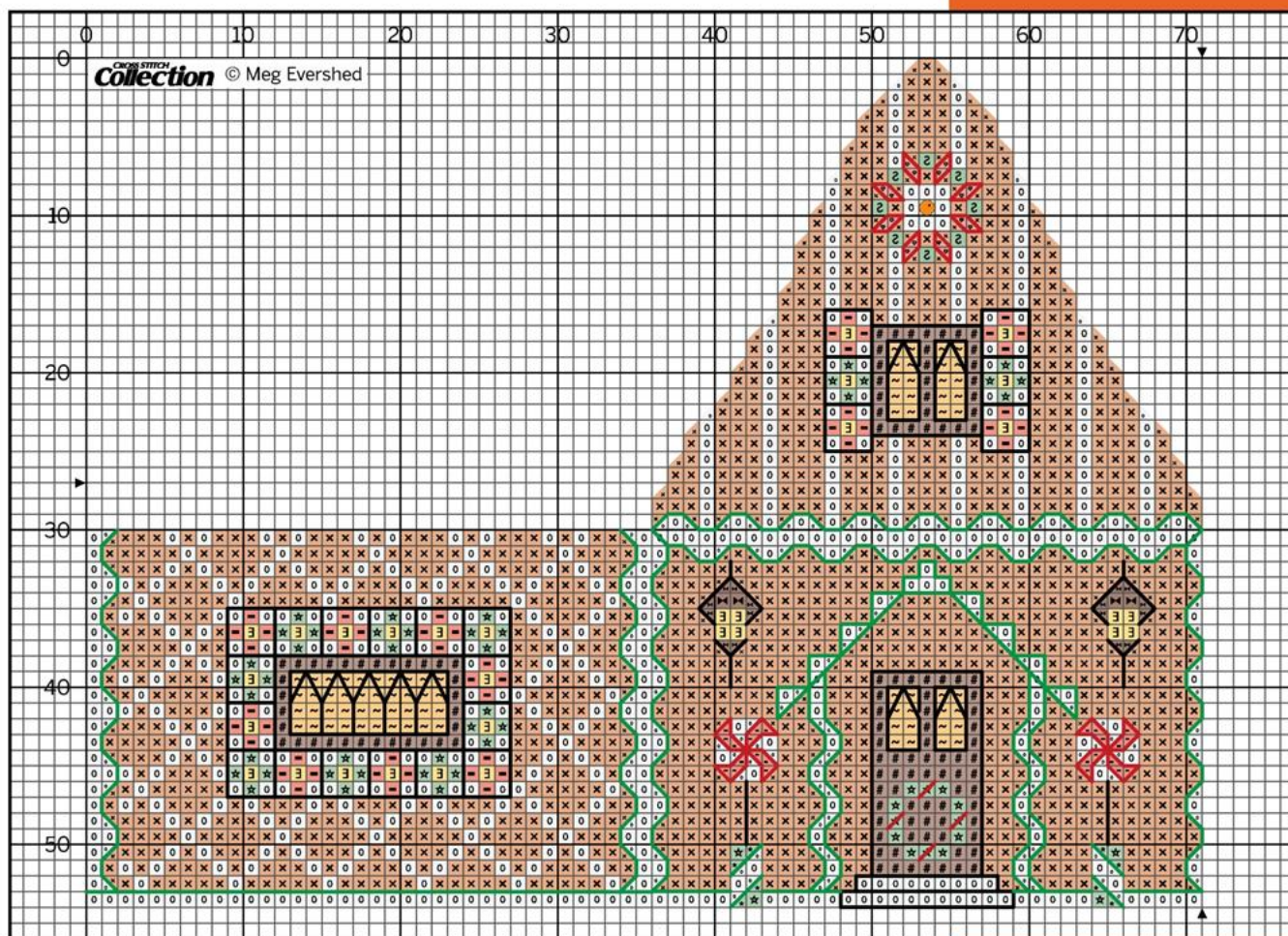


Sweet Gingerbread Houses
£12.45



Dower House
£17.95

For stockists, visit www.3dcrossstitch.co.uk



Gingerbread delight

DMC Anchor Madeira Colour

Cross stitch in two strands

White	002	2402	White
321	047	0510	Red
500	683	1705	Dark green
938	381	2005	Brown
3818	923	2704	Light green
DMC Light Effects E3852			

Cross stitch in one strand

301	1049	2306	Ginger
*321	047	0510	Red
742	303	0114	Orange
*938	381	2005	Brown
*3818	923	2704	Light green

Backstitch in one strand

	*321	047	0510	Red
wreaths, Christmas tree pot, lollipops, candles				
	*938	381	2005	Brown
door, windows, shutters, lamps, steps, lollipops, candles				
	*DMC Light Effects E3852			
all other outlines and details				

Attach beads with matching cotton

Mill Hill seed beads 00557	Gold
roof, porch, Christmas tree	
Mill Hill seed beads 42010	Ice
candle holders	
Chaton Montees	Topaz
centre of wreath at front and back	

Stitched using DMC threads on 16HPI aida

House stitch count 54x142

Design area 3½x8¾in (9x22cm)

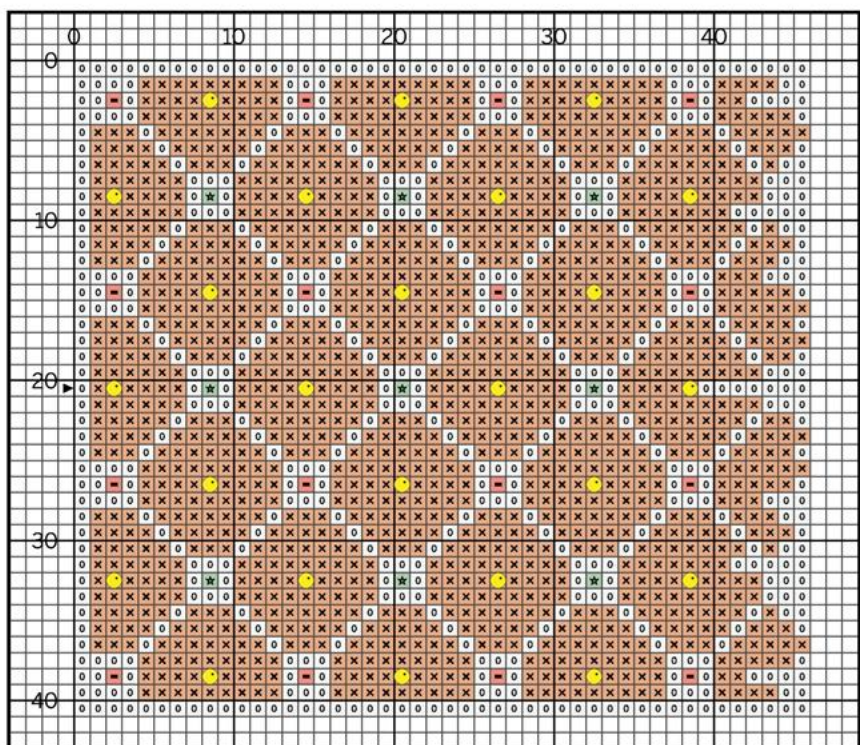
Roof stitch count 41x93

Design area 2½x5¾in (6.5x15cm)

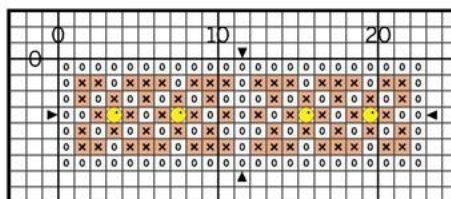
Porch stitch count 7x23

Design area ½x1½in (1.5x4cm)

*indicates colour is listed earlier in the key



Collection © Meg Evershed



Make stitches stand up on the fabric like real piped icing on gingerbread by working the white patterns in two strands of stranded cotton

Cutting the plastic canvas

TRACE round the templates on page 55 and cut them out, then use these to cut out the shapes from the plastic canvas. You will need:

- Base x 1
- Side Walls x 2
- Gable walls x 2
- Porch pieces x 2
- Roof pieces x 2

Making the walls

FINISH all the stitching before cutting the wall shapes from the aida. Cut them ¾in (2cm) outside the stitching all the way round.

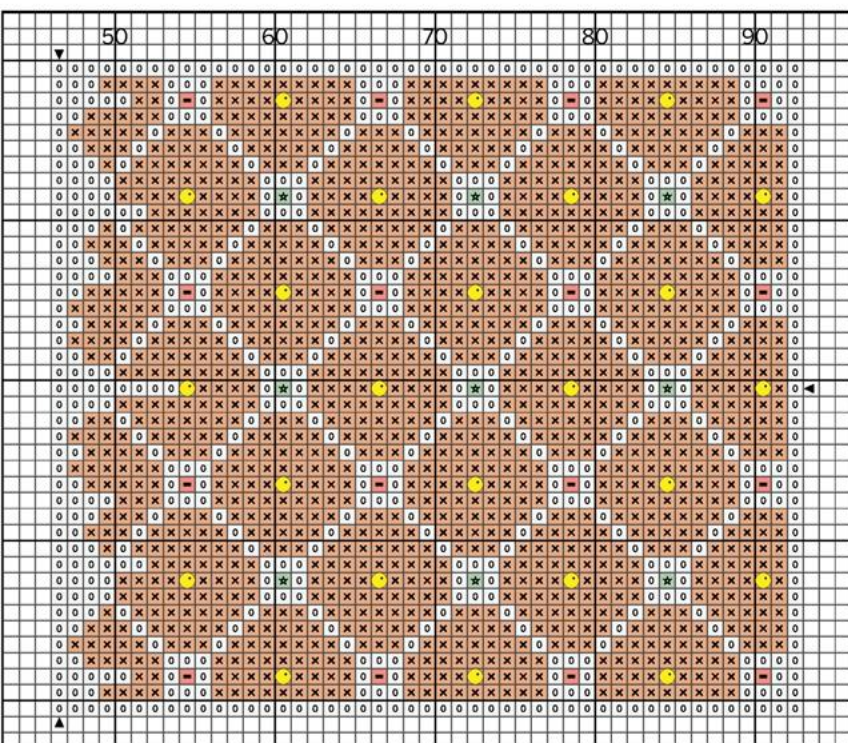
1 **MAKE** the walls and gable walls by placing the stitched aida right sides down with the relevant plastic canvas pieces on top, matching them to the stitched shapes.

2 **HOLD** the plastic canvas walls together with a strip of sticky tape to make them easier to handle. The lacing will hold them firmly in place later.

3 **FOLD** the edges of the aida over on top of the plastic canvas then lace them across the plastic ➤

Beautiful beads

Meg has used several beads to decorate the gingerbread house with yummy sweets. Gold seed beads are attached to the roof, porch and Christmas tree, with ice beads on the candle holders. You'll also attach a beaded pearl trim to create an icing-style edging – these ivory micropearls are available from www.ribbonbox.co.uk, or you can call 023 80737164. Finally, decorate the gable wreaths with a topaz coloured Chaton Montee – mounted rhinestones with four holes in the back. You can find them at www.thesouthamptonbeadshop.co.uk, or call 023 80678466.



Roof Cut 2

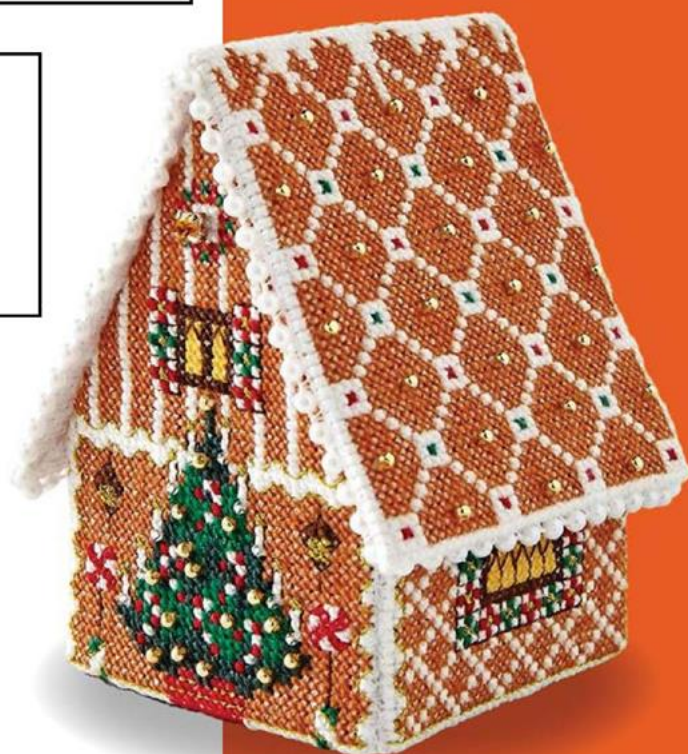
Gable wall Cut 2

Side wall Cut 2

Base Cut 1

Porch Cut 2

Cleverly constructed, you'll stitch Meg's designs on fabric before lacing them around plastic canvas to create your 3D house shape





Pop a pair of tweezers in your sewing kit — they'll be invaluable for creating your house!

Did you know that in the Norwegian city of Bergen, local children help build a replica of their city entirely out of ginger bread every year? This could be the start of your own sweet city!

➤ canvas. You will need to snip the aida in the angles between the sloping sides of the gables and the side walls, but do not snip in too far.

4 USING a sewing needle and white sewing thread, you can begin lacing. Attach the thread to the edge of the aida and pass the needle backwards and forwards across the plastic, taking small stitches in the fabric margins. You will need to push the needle into the fabric, rather than into the holes in the aida, as this may cause it to fray. It helps to work two or three rows of lacing, each one making the fabric a little tauter, and you may find it useful to work some lacing stitches horizontally, slipping the needle through the holes in the canvas.

Make the roof, porch and base

MOUNT the cross stitched roof pieces on the plastic canvas pieces in the same way, using white sewing thread. Trim each corner, fold the fabric into a neat mitre and secure it with small stitches. Stitch the pearl trim all around the edge of the roof.

1 MAKE the porch by folding the fabric in half with the cross stitch on the outside. Slip the pieces of plastic inside the fabric, fold in the ends and stitch around them and along the open edge, enclosing the plastic in the fabric. Stitch pearl trim along one long edge and both the short edges.

2 MOUNT the brown felt on the plastic canvas base in the same way as the walls.

Assembling the pieces

1 BEND the walls at right angles to each other to form the shape of a house and ladder stitch the edges together using white sewing thread. Try to match the stitching as closely as possible. The white sewing thread will be hidden inside the seam.

2 PLACE the roof on top of the walls with the ridge in the centre. Make sure the overhang is equal on both sides. Ladder stitch the roof to the walls using the rows of holes in the aida fabric to guide the placement of your stitches. Use tweezers to help pull the needle through the canvas and fabric when negotiating tight corners, and leave stitches loose when working a difficult area. You can pull gently on the thread to bring the edges together afterwards. Attaching a roof to the walls is always the most challenging part of constructing a house. Be patient with yourself and remember that most of your sewing stitches will be hidden when the piece is finished.

3 JOIN in the porch before the base is sewn into place. Attach a length of white sewing thread to the long edge of the porch that is not trimmed with pearls. Push the needle through the wall at the position shown on the chart. Bring the needle back through the wall, take a small stitch in the edge of the porch and continue in this way until the porch is securely attached.

4 FIT the base into the bottom of the house and ladder stitch it in place to complete your house.