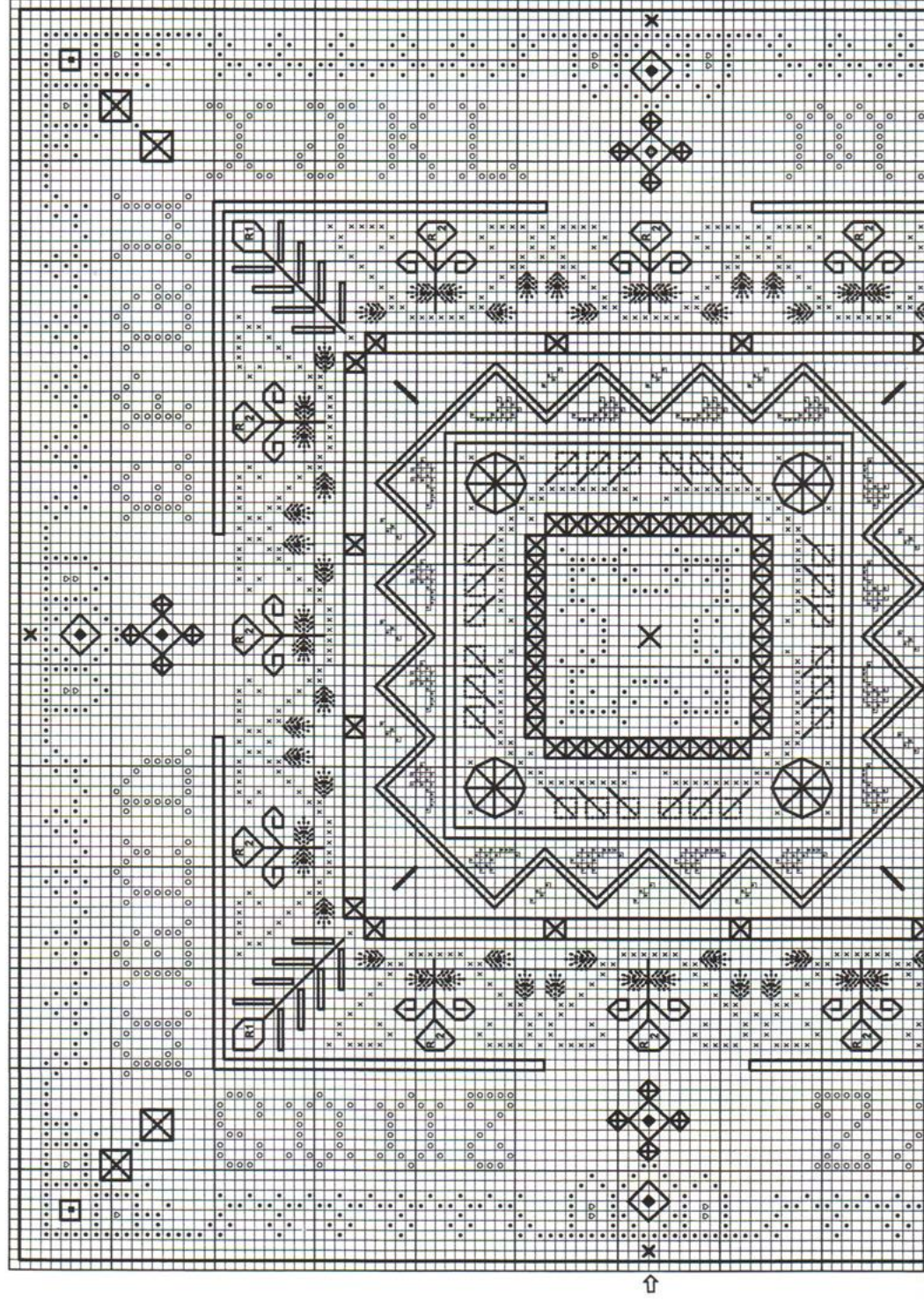






*Beads, Buttons and Bows*

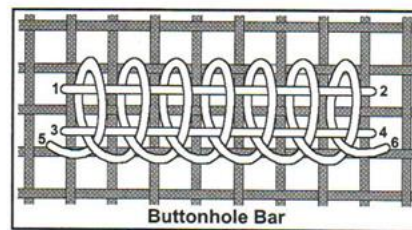
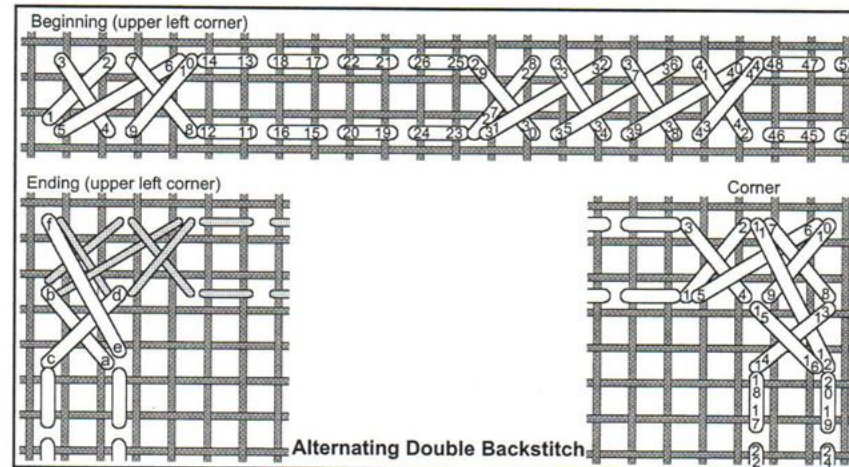
Chart 1





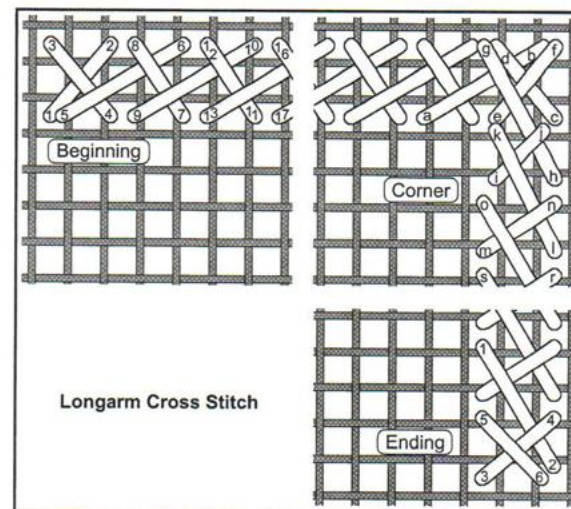
# Beads, Buttons and Bows

## Stitch Diagrams



### Embellishments (after assembly)

**Tassel making:** Use one strand a full yard long of each color and pearl cotton to make each of the four tassels. Wind them around the small (1 3/4" X 1 3/4") card stock square. Cut through at one end. Gather and tie a knot in center with a piece of pearl cotton. Fold in half at the knot. Approximately 1/4 inch from the knot, wrap tassel 6 to 8 times with a piece of pearl cotton and finish off thread.



A tassel and a bead are attached at each of the four upper points (mid points of each of the top sides) two threads inside the (over 4) backstitch line; see the four small Xs on Chart 1. Using one strand pearl cotton, run thread through the fabric, then a bead, then through the loop of a tassel. Then go back through the bead and the fabric. Finish off thread.

Simultaneously attach beads at the centers of both bottom and top at the large Xs in the centers of Charts 1 and 2. Beginning on the bottom, with one strand pearl cotton, go through the bottom bead, fabric, fiber fill, top fabric, and the top bead, tightening slightly. Then go back down through the top fabric, fiber fill, and the bottom fabric. Pull tightly and tie a knot in the pearl cotton to secure.

Attach the mid point of a ribbon at the each of the four bold diagonal lines (Chart 1) using two strands 1046. Thread each ribbon through a button and tie in a bow. Trim ribbon to desired length.

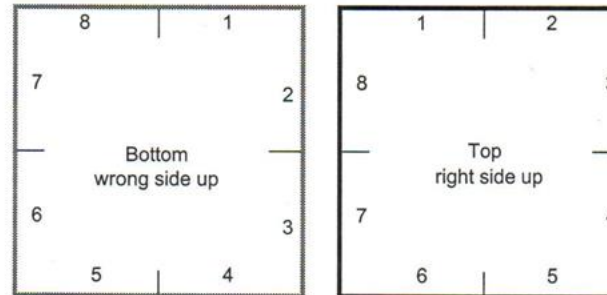
## *Beads, Buttons and Bows*

### Assembly

Trim both pieces of linen eight threads from the backstitch lines. Fold each piece inward along the backstitch lines and press in place. The (over four) backstitches should lie right along the edges.

Both pieces are divided into eight segments numbered 1--8. Each segment contains 31 backstitches. To assemble, the two pieces are whip stitched together, segment 1 to segment 1, segment 2 to segment 2, etc.

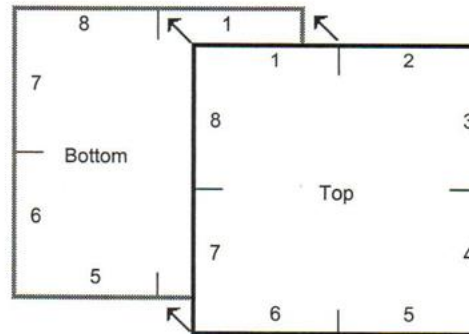
Place the Bottom piece wrong side up.



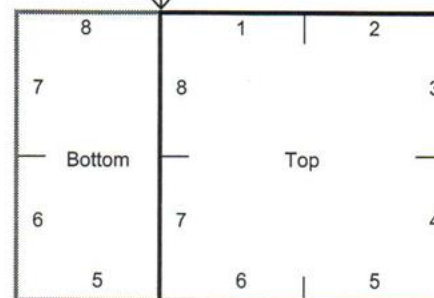
Place the top piece (right side up) on top of the bottom piece so that segment 1 of the top lines up with segment 1 of the bottom along the (over 4) backstitch lines. There will be 31 pairs of backstitches.

The two pieces of linen are attached together with one strand pearl cotton.

Begin attaching the two pieces of fabric together by whip stitching through the pairs of backstitches along segment 1 of both pieces, one whip stitch through each pair of backstitches. Pull each segment of the whip stitching tightly, but be careful not to "gather" the linen.



Begin whipstitching here.



After whip stitching segment 1 to segment 1, bend the fabric around so that the 31 backstitches of segment 2 of the top line up with the 31 backstitches of segment 2 of the bottom. Continue whip stitching until both segment 2s are whip stitched together. Manipulate the fabric as necessary to line up the backstitches of both segment 3s and whip stitch together. Continue whip stitching the numbered segments together. Just before closing along segment 8, stuff the pillow with fiber fill and continue whip stitching to close.



## *Beads, Buttons, and Bows*

<b>Caron</b> <b><u>Waterlilies</u></b> ● Evergreen × Olive ♥ Plum	<b>Soie d'</b> <b><u>Alger</u></b> ○ 1046 I 2212 2222 2236	<b><u>Mill Hill Bead</u></b> 05202
<b><u>Zweigart</u></b> White Belfast Two pieces ( 12" X 12" ).	<b><u>Anchor #12</u></b> <b><u>Pearl Cotton</u></b> #1	<b><u>Blumenthal</u></b> <b><u>Lansing</u></b> Buttons: HK-11
Stitch Count: 124 H by 124 W. Finished size: Approximately 7 3/4" H by 7 3/4" W.		

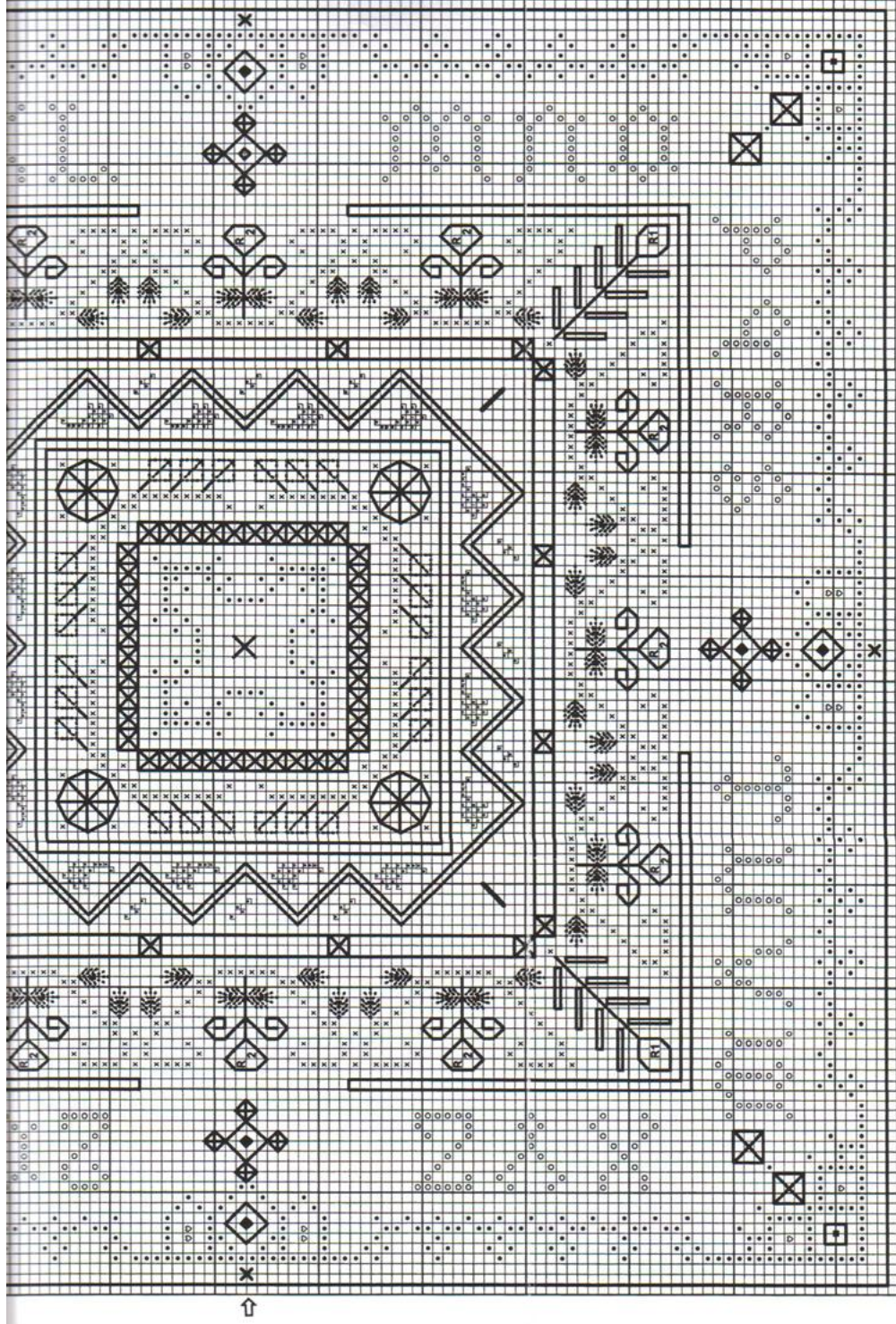
Model stitched on 32 count White Belfast by **Zweigart**. using threads, buttons and beads listed above.

### **Materials required:**

Fabric: 32 count linen: (2 pieces 12" by 12")  
Fiber fill or poly pellets for stuffing  
Four 5/8" to 1 1/16" white buttons  
One yard of 1/4" burgundy ribbon cut into 4 equal lengths

**Beads, Buttons, and Bows (top of pillow prior to assembly)**



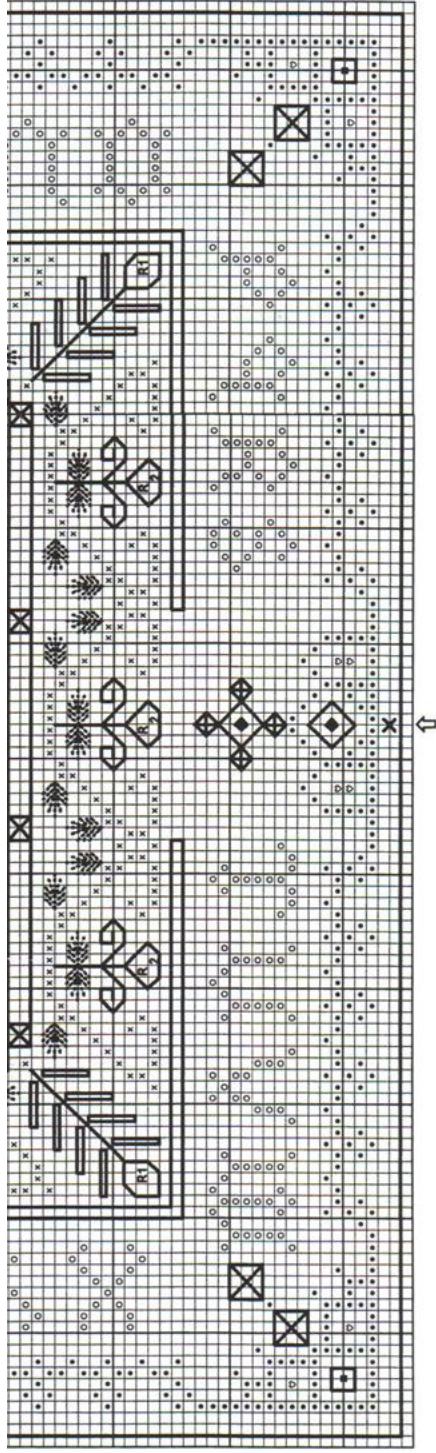


**Chart 2**  
(Center section, upper left quarter)

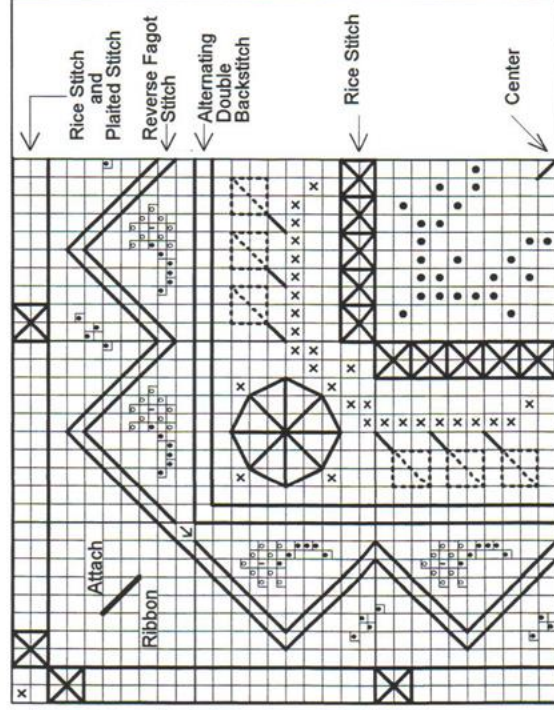


Note: For enlargement of upper left quarter of Chart 1, see Chart 4 on page 6.





**Chart 2**  
(Center section, upper left quarter)



Note: For enlargement of upper left quarter of Chart 1, see Chart 4 on page 6.

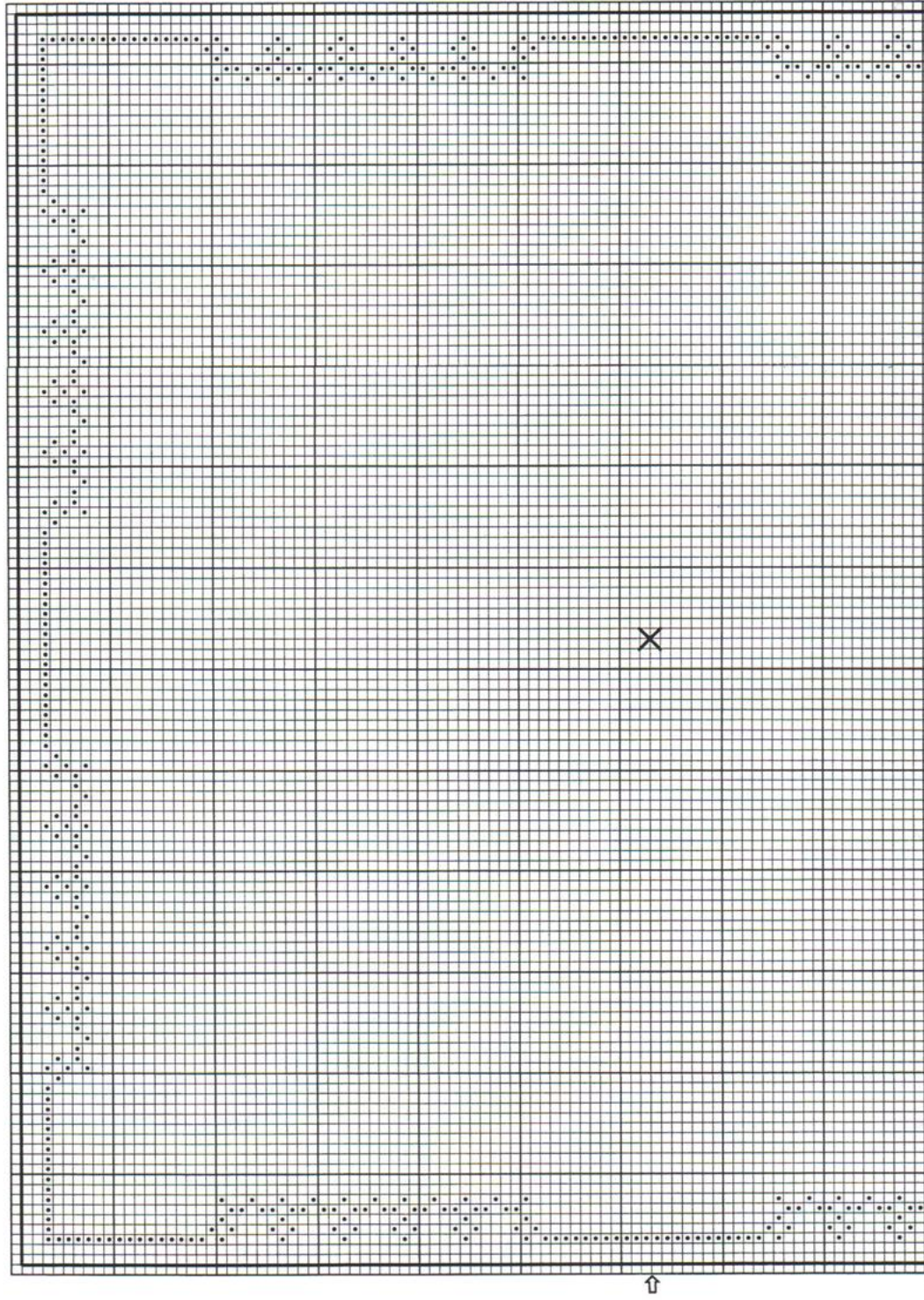
<b>Caron Waterlilies</b> ● Evergreen x Olive ◇ Plum	<b>Sole d'Alger</b> ○ 1046 ■ 2212 ■ 2222 ■ 2236	<b>Mill Hill Bead</b> 05202
<b>Zweigart</b> White Belfast Two pieces (12" X 12").		<b>Blumenthal Lansing</b> Buttons: HK-11
Stitch Count: 124 H by 124 W. Finished size: Approximately 7 3/4" H by 7 3/4" W.		<b>Anchor #12 Pearl Cotton</b> #1

"Beads, Buttons and Bows" by Catherine Strickler  
 Copyright © 2003/2008 Indigo Rose.  
 All rights reserved.

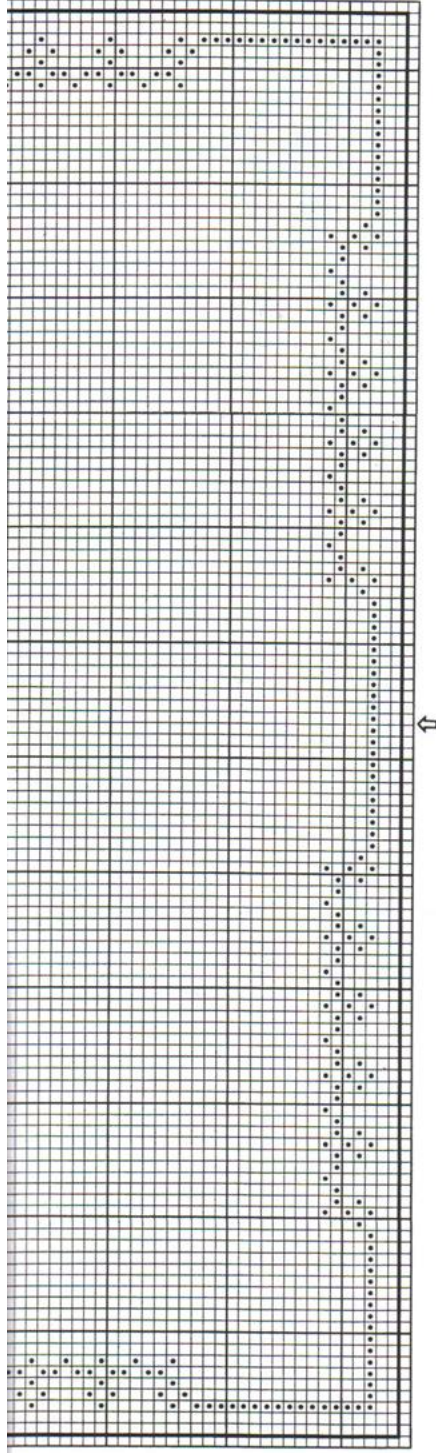


*Beads, Buttons and Bows*

Chart 3







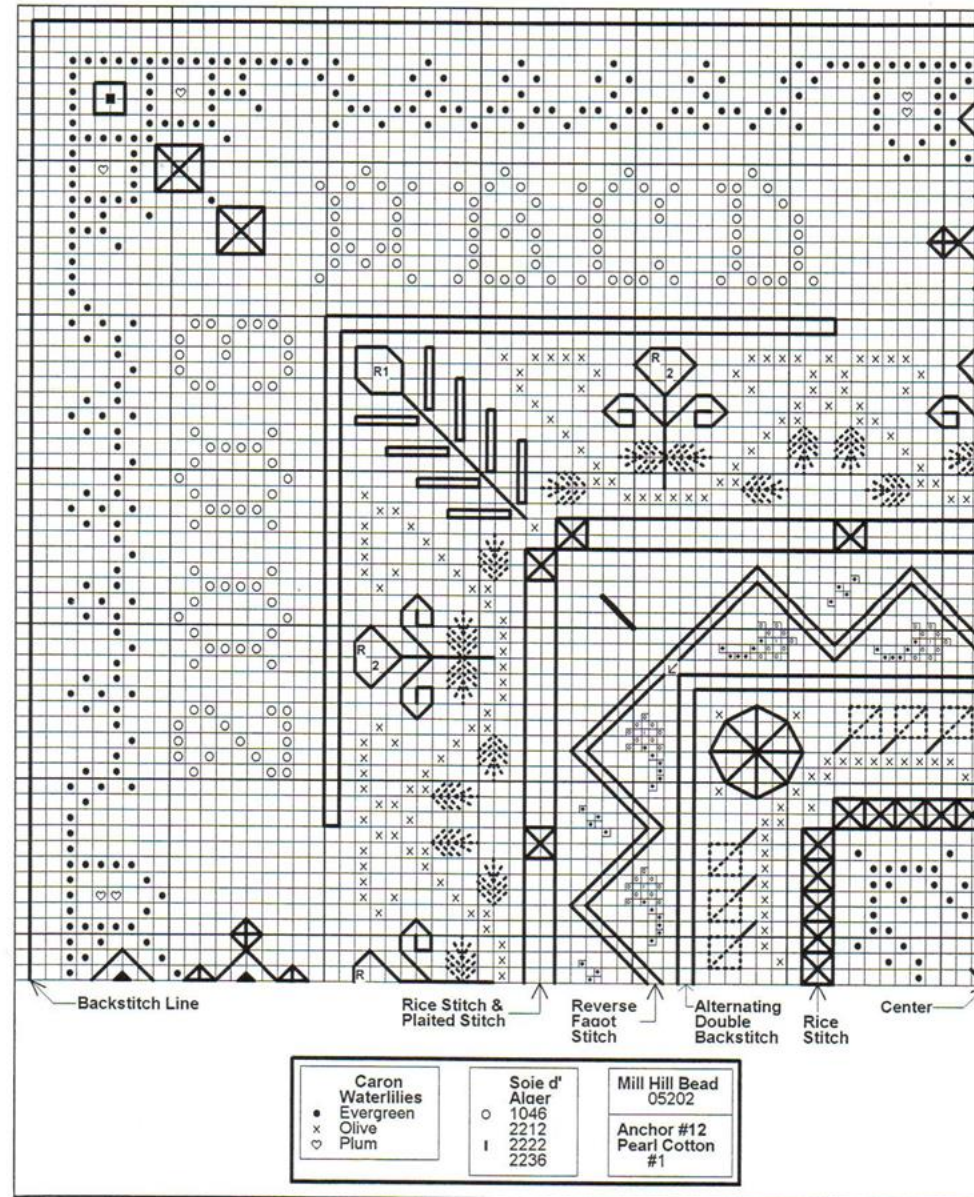
<b>Caron</b> <b>Waterlilies</b> ● Evergreen x Olive ♡ Plum	<b>Soie d'</b> <b>Alger</b> ○ 1046 I 2212 I 2222 I 2236	<b>Mill Hill Bead</b> 05202
<b>Zweigart</b> White Belfast Two pieces ( 12" X 12" ).	<b>Blumenthal</b> <b>Lansing</b> Buttons: HK-11	<b>Anchor #12</b> <b>Pearl Cotton</b> #1
Stitch Count: 124 H by 124 W. Finished size: Approximately 7 3/4" H by 7 3/4" W.		

"Beads, Buttons and Bows" by Catherine Strickler  
 Copyright © 2003/2008 Indigo Rose.  
 All rights reserved.



*Beads, Buttons & Bows*

Chart 4 (Upper left quarter)





# *Beads, Buttons & Bows*

## Instructions

### Top

Finger press fabric to find center. Baste a small cross there to keep center marked. (This is also the place where a bead will be attached during finishing.)

#### Beginning in the center, and working outward:

Cross stitch with two strands.

Work each (  ) with a Rice Stitch using two strands Plum.


Cross stitch with two strands. Work each (  ) with a Spider Web using two strands 2222. Work each leaf (  ) with a Foliage Stitch using one strand Olive. Connect each leaf to the cross stitching with a backstitch using one strand Olive.



Work the square in Alternating Double Backstitch using one strand 2212.



Cross stitch (over one thread) using one strand. See Chart 2 and example.

Work chevron pattern in Reverse Fagot Stitch using one strand 2236.

Cross Stitch (over one thread) using one strand.





Work each (  ) with Rice Stitch using two strands Evergreen. Work areas between Rice Stitches in Plaited Stitch using one strand Plum.

Cross stitch with two strands. Work each (  ) with a Rhodes Stitch #1, and each (  ) with a Rhodes Stitch #2, both using two strands 2222.

Fly stitch leaves (  ), and work Buttonhole bars (  ), both with one strand 2236. The remainder of the area is worked in Double Running Stitch using one strand 2236.

Work the four corner sections (just inside the alphabet) in Longarm cross stitch with one strand 2212.

Cross stitch alphabet and numbers with two strands.

Work each (  ) with a Triple Rice Stitch, each (  ) with a Square Eyelet, each (  ) with a Diamond Eyelet, and each (  ) with a Smyrna Cross, all using two strands Plum.

Cross stitch border with two strands.

Backstitch (over 4 threads) the solid line around the entire perimeter using one strand #12 Pearl Cotton (62 backstitches per side.)

### Bottom

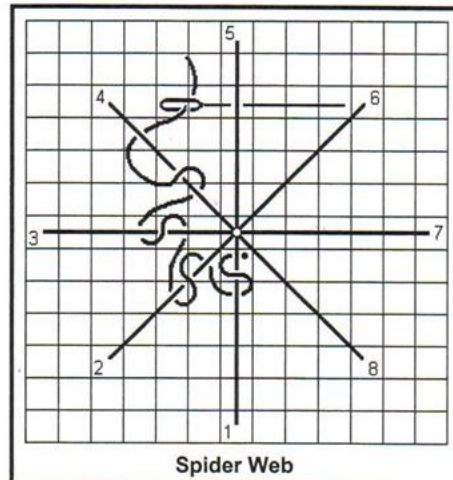
Finger press fabric to find center. Baste a small cross there to keep center marked. (This is also the place where a bead will be attached during finishing.)

1. Cross stitch with two strands.

2. Backstitch (over 4 threads) the solid line around the entire perimeter using one strand #12 Pearl Cotton (62 backstitches per side.)

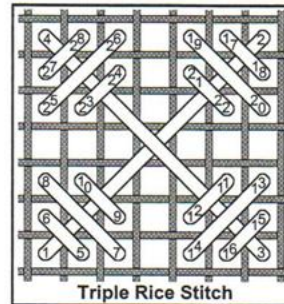


**Stitch Diagrams**

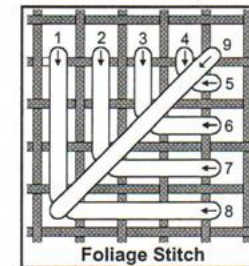


**Spider Web**

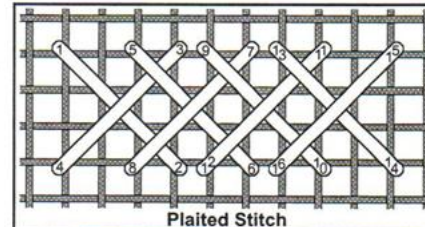
I work Spider Webs over an Algerian Eye foundation; it makes the stitch easier and neater. Using an away waste knot, stitch Algerian Eye (stitches 1 through 8), working each stitch toward the center. Then bring the needle up just below and to the right of the center hole (next to stitch 1). Working on the surface only, take needle under stitch 1, back over the top of stitch 1, then under stitch 1 and stitch 2. (Stitch 1 now has one wrap.) Now, bring the needle back over the top of stitch 2, then under stitch 2 and stitch 3. (Stitch 2 now has one wrap.) Continue around clockwise, gently pulling wrapping stitches toward the center. Continue this pattern, going around the Algerian Eye as many times as necessary to fill the area. Then, at the end of a wrap, take needle down and secure the thread to the stitching on the back.



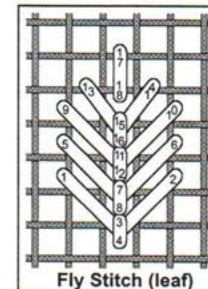
**Triple Rice Stitch**



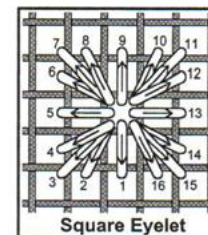
**Foliage Stitch**



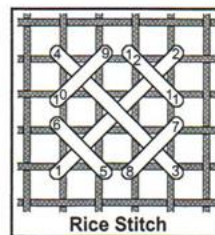
**Plaited Stitch**



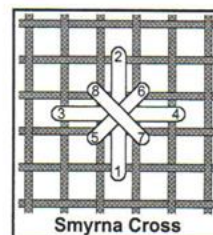
**Fly Stitch (leaf)**



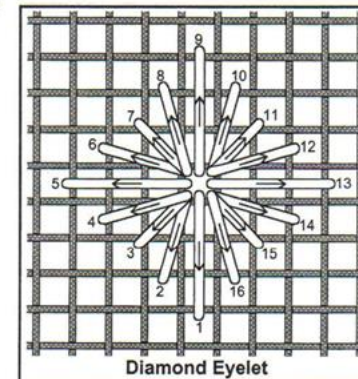
**Square Eyelet**



**Rice Stitch**



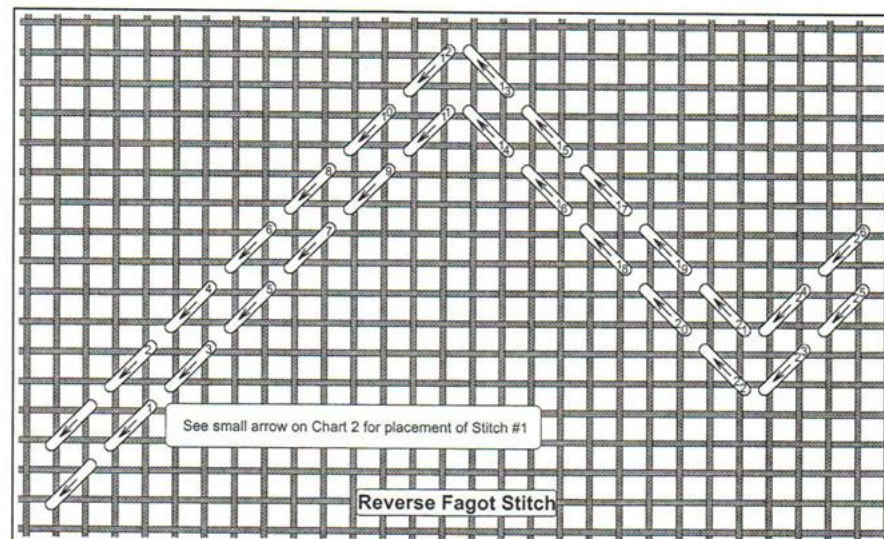
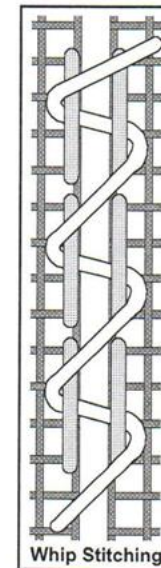
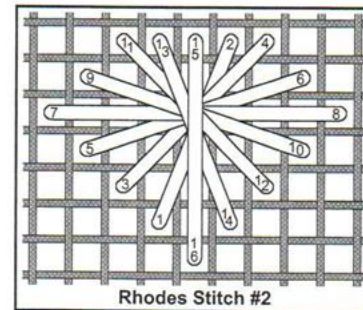
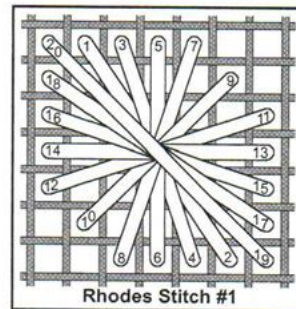
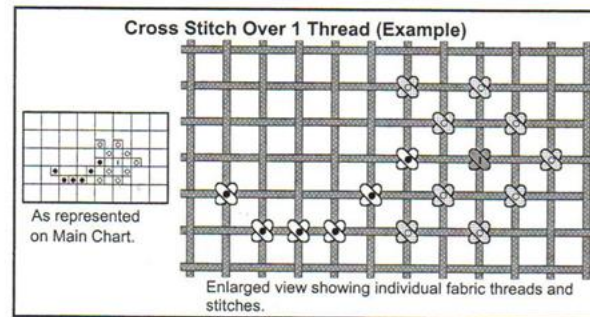
**Smyrna Cross**



**Diamond Eyelet**

# Beads, Buttons and Bows

## Stitch Diagrams









*Indigo*

*Rose*

# *Beads, Buttons, & Bows*

*Biscornue Pillow*



Additional photograph on back.

*Catherine Strickler*

4217 Bounty Road • Virginia Beach, VA 23455