

(9)

[illegible]

(11)

$$(11) \quad \mathcal{L}(\mathcal{A}) = \mathcal{L}(\mathcal{B}) \quad (12)$$



(13)

(14)

[illegible]



(16)



(17)

[illegible]

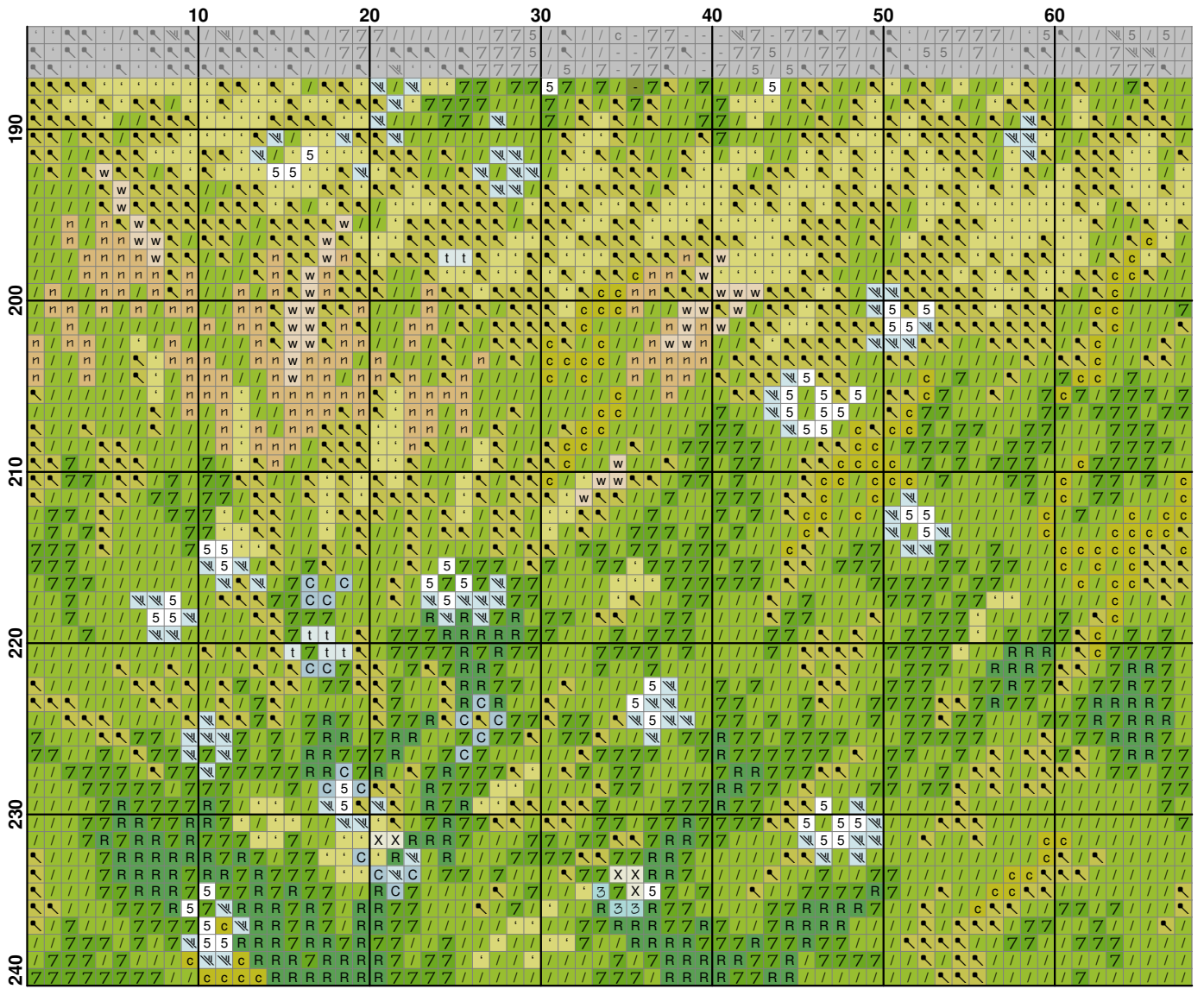
[illegible]

[illegible]



[illegible]

[illegible]



[illegible]



[illegible]

[illegible]

[illegible]

[illegible]



[illegible]

**Fabric:** Aida 18, White

450w X 240h Stitches

**Size:** 18 Count, 63.50w X 33.87h cm**Floss Used for Full Stitches:**

Symbol	Strands	Type	Number	Color
	2	DMC	165	Moss Green-VY LT
	2	DMC	166	Moss Green-MD LT
	2	DMC	301	Mahogany-MD
	2	DMC	310	Black
	2	DMC	317	Pewter Gray
	2	DMC	400	Mahogany-DK
	2	DMC	402	Mahogany-VY LT
	2	DMC	413	Pewter Gray-DK
	2	DMC	420	Hazelnut Brown-DK
	2	DMC	422	Hazelnut Brown-LT
	2	DMC	433	Brown-MD
	2	DMC	437	Tan-LT
	2	DMC	469	Avocado Green
	2	DMC	470	Avocado Green-LT
	2	DMC	505	Jade
	2	DMC	581	Moss Green
	2	DMC	597	Turquoise
	2	DMC	677	Old Gold-VY LT
	2	DMC	702	Kelly Green
	2	DMC	775	Baby Blue-VY LT
	2	DMC	827	Blue-VY LT
	2	DMC	838	Beige Brown-VY DK
	2	DMC	906	Parrot Green-MD
	2	DMC	907	Parrot Green-LT
	2	DMC	926	Gray Green-MD
	2	DMC	927	Gray Green-LT
	2	DMC	928	Gray Green-VY LT
	2	DMC	932	Antique Blue-LT
	2	DMC	935	Avocado Green-DK
	2	DMC	989	Forest Green
	2	DMC	3033	Mocha Brown-VY LT
	2	DMC	3348	Yellow Green-LT
	2	DMC	3752	Antique Blue-VY LT
	2	DMC	3756	Baby Blue-UL VY LT
	2	DMC	3774	Desert Sand-VY LT
	2	DMC	3776	Mahogany-LT
	2	DMC	3799	Pewter Gray-VY DK
	2	DMC	3811	Turquoise-VY LT
	2	DMC	3817	Celadon Green-LT
	2	DMC	3819	Moss Green-LT
	2	DMC	3840	Lavender Blue-LT
	2	DMC	3841	Baby Blue-Pale
	2	DMC	Ecru	Ecru
	2	DMC	B5200	Snow White

**Usage Summary****Strands Per Skein:** 6**Skein Length:** 795.0 cm

Type	Number	Full	Half	Quarter	Petite	Back(cm)	Str(cm)	Spec(cm)	French	Bead	Skein Est.
DMC 165	165	2236	0	0	0	0.0	0.0	0.0	0	0	1.000
DMC 166	166	5039	0	0	0	0.0	0.0	0.0	0	0	2.000
DMC 301	301	511	0	0	0	0.0	0.0	0.0	0	0	1.000
DMC 310	310	1903	0	0	0	0.0	0.0	0.0	0	0	1.000
DMC 317	317	529	0	0	0	0.0	0.0	0.0	0	0	1.000
DMC 400	400	455	0	0	0	0.0	0.0	0.0	0	0	1.000
DMC 402	402	671	0	0	0	0.0	0.0	0.0	0	0	1.000
DMC 413	413	507	0	0	0	0.0	0.0	0.0	0	0	1.000
DMC 420	420	405	0	0	0	0.0	0.0	0.0	0	0	1.000
DMC 422	422	1007	0	0	0	0.0	0.0	0.0	0	0	1.000
DMC 433	433	694	0	0	0	0.0	0.0	0.0	0	0	1.000
DMC 437	437	756	0	0	0	0.0	0.0	0.0	0	0	1.000
DMC 469	469	7983	0	0	0	0.0	0.0	0.0	0	0	3.000
DMC 470	470	5552	0	0	0	0.0	0.0	0.0	0	0	2.000
DMC 505	505	1742	0	0	0	0.0	0.0	0.0	0	0	1.000
DMC 581	581	2677	0	0	0	0.0	0.0	0.0	0	0	1.000
DMC 597	597	613	0	0	0	0.0	0.0	0.0	0	0	1.000
DMC 677	677	1144	0	0	0	0.0	0.0	0.0	0	0	1.000
DMC 702	702	7948	0	0	0	0.0	0.0	0.0	0	0	3.000
DMC 775	775	4794	0	0	0	0.0	0.0	0.0	0	0	2.000
DMC 827	827	1215	0	0	0	0.0	0.0	0.0	0	0	1.000
DMC 838	838	873	0	0	0	0.0	0.0	0.0	0	0	1.000
DMC 906	906	10127	0	0	0	0.0	0.0	0.0	0	0	4.000
DMC 907	907	9934	0	0	0	0.0	0.0	0.0	0	0	4.000
DMC 926	926	1173	0	0	0	0.0	0.0	0.0	0	0	1.000
DMC 927	927	1154	0	0	0	0.0	0.0	0.0	0	0	1.000
DMC 928	928	477	0	0	0	0.0	0.0	0.0	0	0	1.000
DMC 932	932	2198	0	0	0	0.0	0.0	0.0	0	0	1.000
DMC 935	935	4901	0	0	0	0.0	0.0	0.0	0	0	2.000
DMC 989	989	2351	0	0	0	0.0	0.0	0.0	0	0	1.000
DMC 3033	3033	588	0	0	0	0.0	0.0	0.0	0	0	1.000
DMC 3348	3348	2291	0	0	0	0.0	0.0	0.0	0	0	1.000
DMC 3752	3752	2182	0	0	0	0.0	0.0	0.0	0	0	1.000
DMC 3756	3756	4419	0	0	0	0.0	0.0	0.0	0	0	2.000
DMC 3774	3774	134	0	0	0	0.0	0.0	0.0	0	0	1.000
DMC 3776	3776	565	0	0	0	0.0	0.0	0.0	0	0	1.000
DMC 3799	3799	736	0	0	0	0.0	0.0	0.0	0	0	1.000
DMC 3811	3811	3131	0	0	0	0.0	0.0	0.0	0	0	2.000
DMC 3817	3817	400	0	0	0	0.0	0.0	0.0	0	0	1.000
DMC 3819	3819	5393	0	0	0	0.0	0.0	0.0	0	0	2.000
DMC 3840	3840	1504	0	0	0	0.0	0.0	0.0	0	0	1.000
DMC 3841	3841	1607	0	0	0	0.0	0.0	0.0	0	0	1.000
DMC Ecru	Ecru	1754	0	0	0	0.0	0.0	0.0	0	0	1.000
DMC B5200	B5200	1726	0	0	0	0.0	0.0	0.0	0	0	1.000