



(19)

	110	120	130	140	150	160
10						
20						
30						
40						
50						
60						
70						



(22)

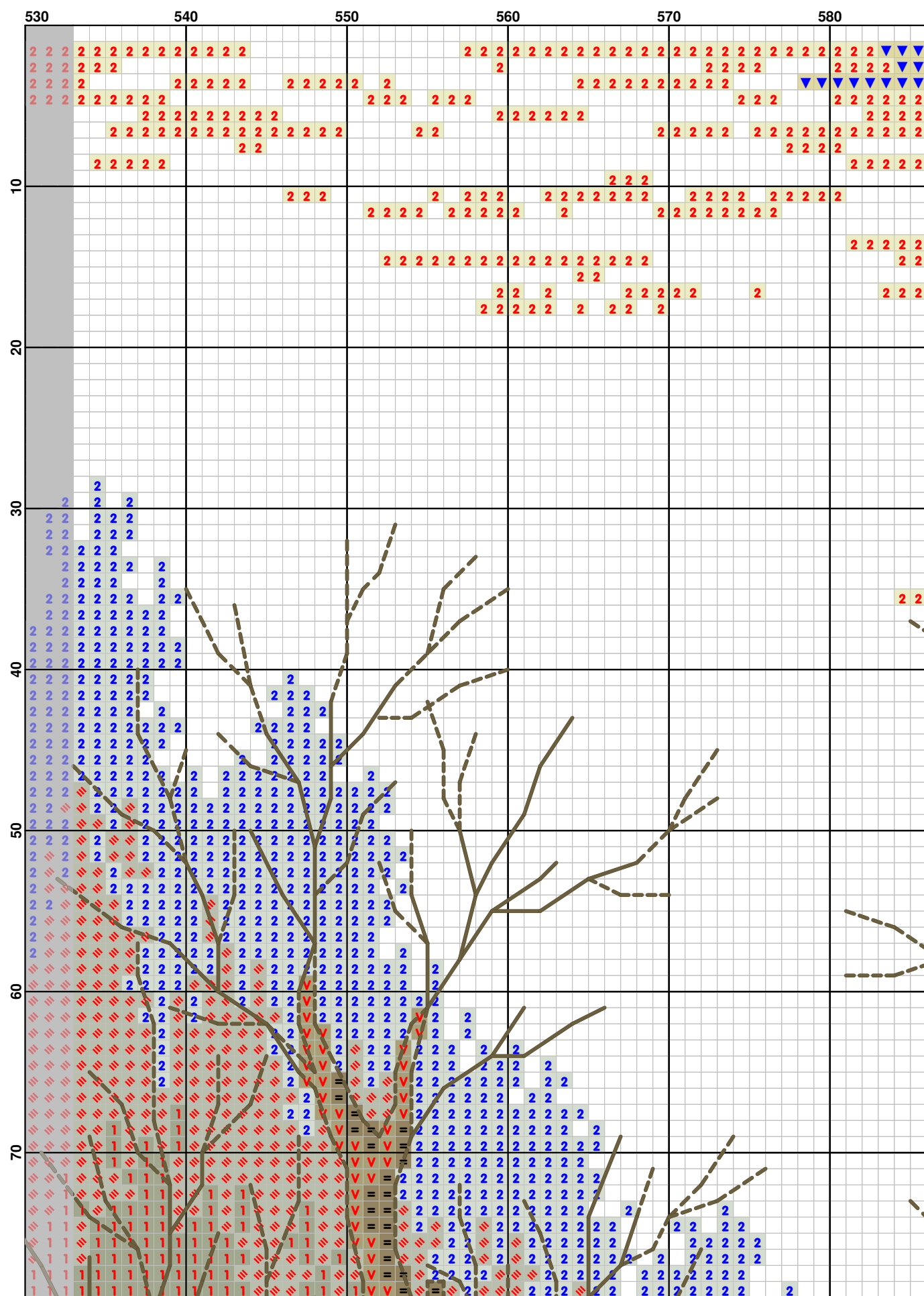
(23)

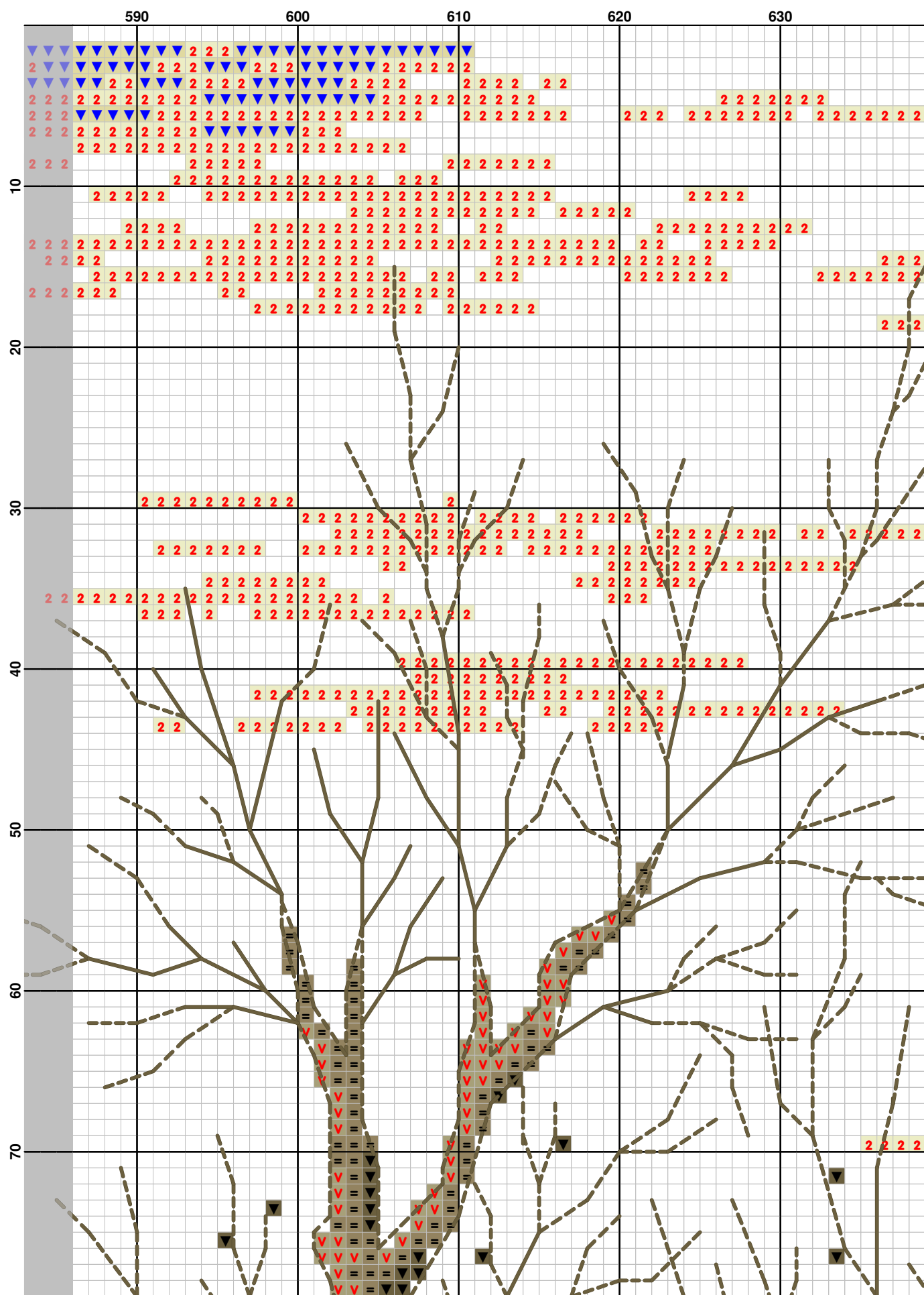
(24)

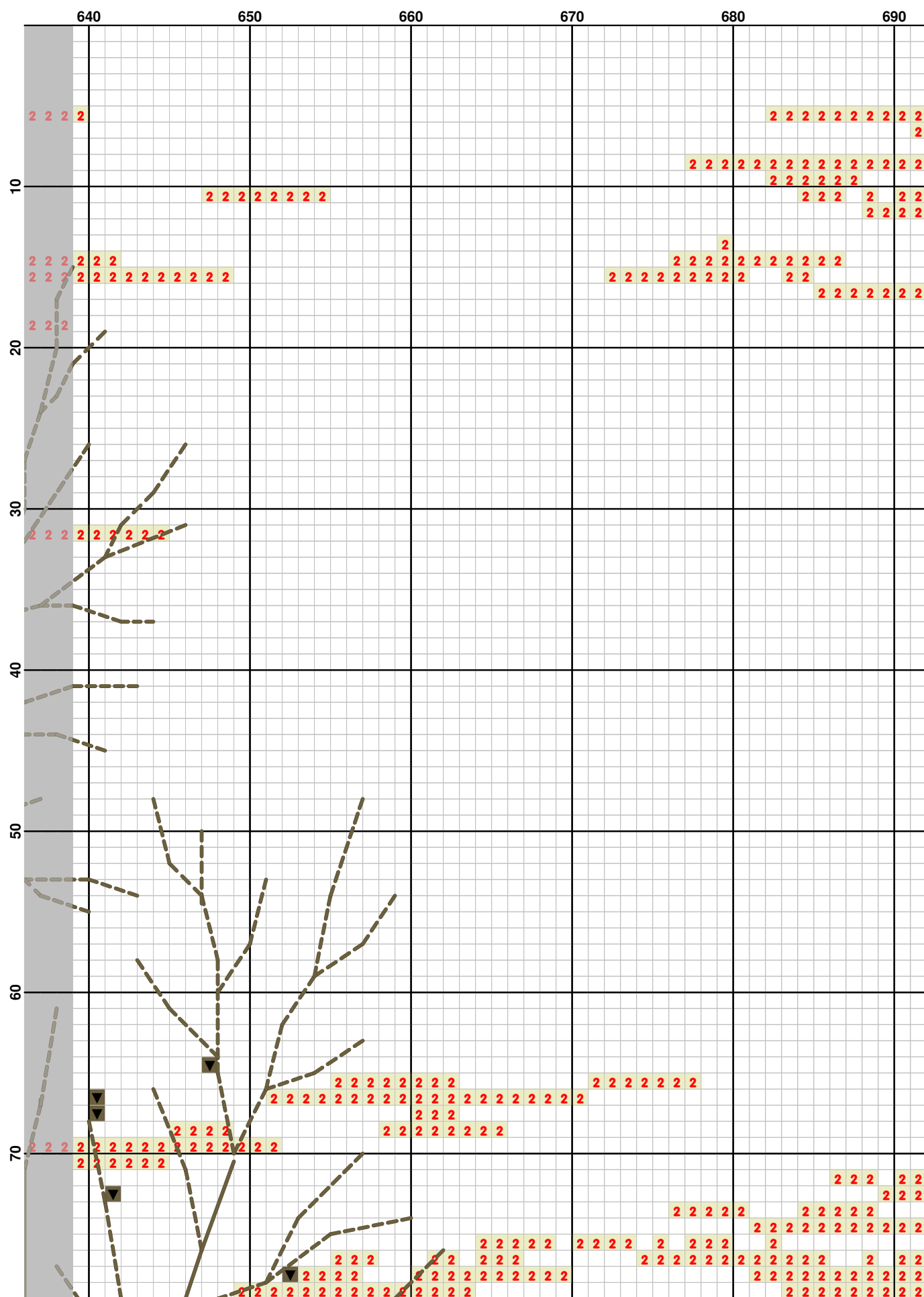
(25)

(26)

(26)



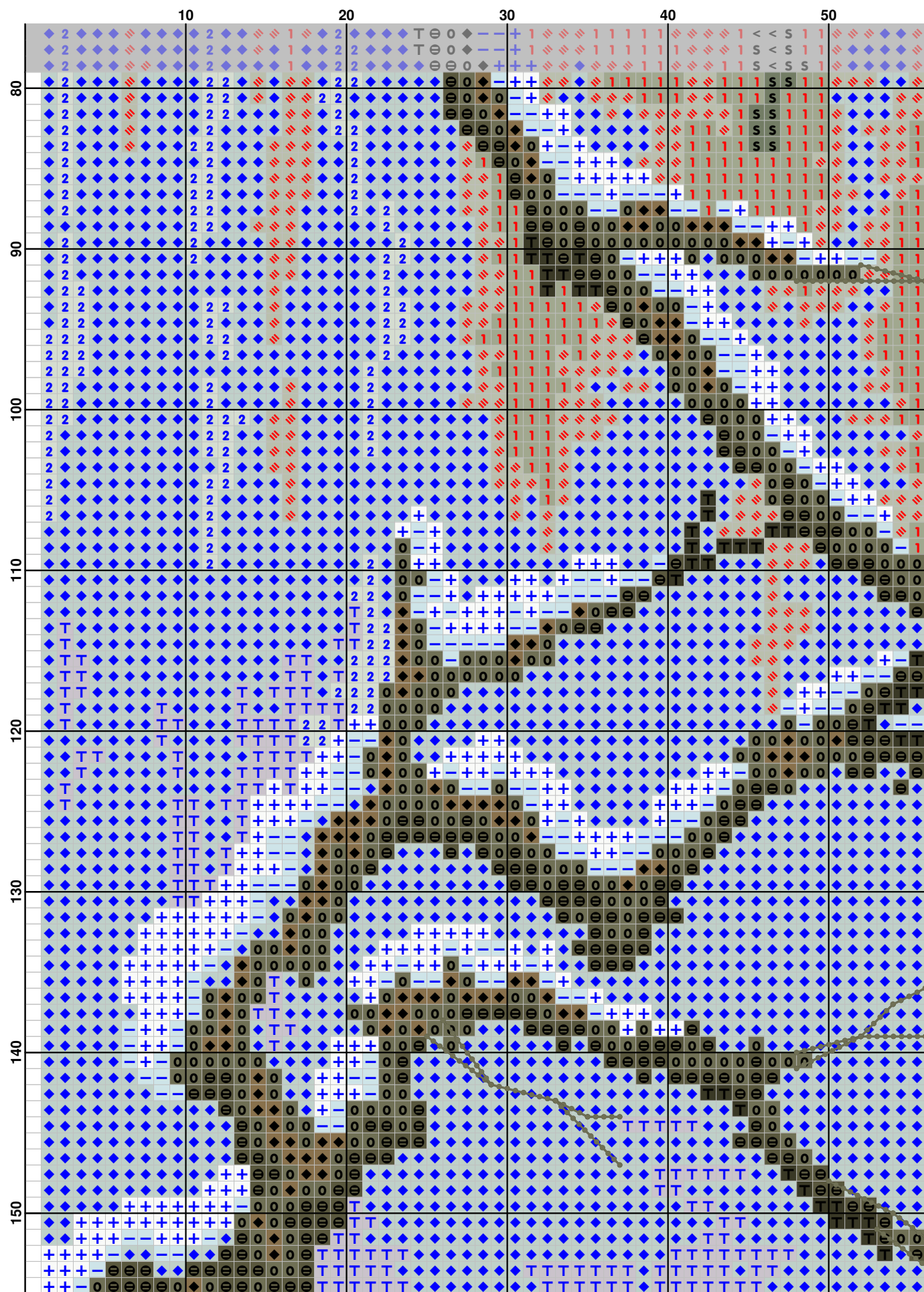


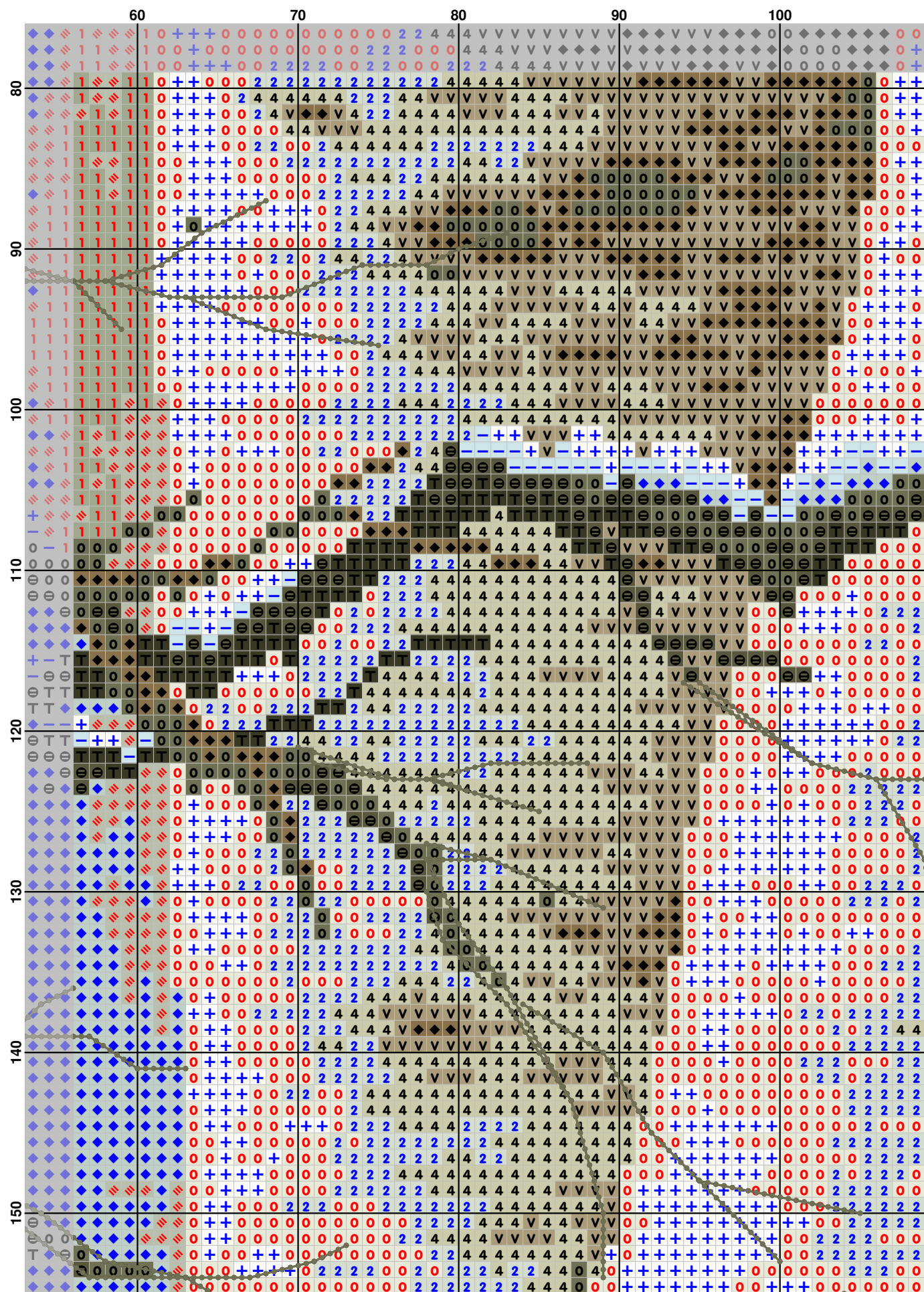


(30)

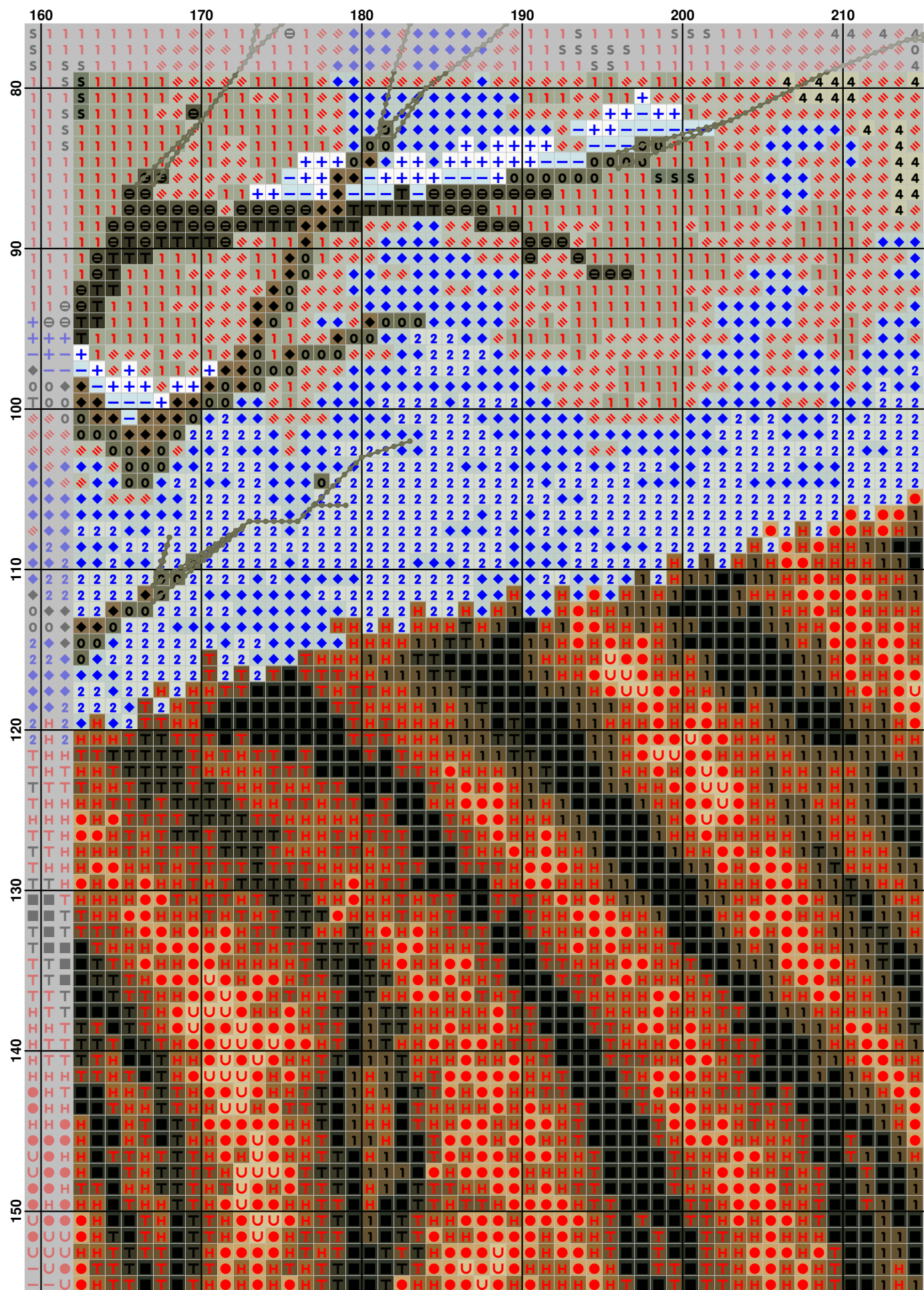








(36)



(38)

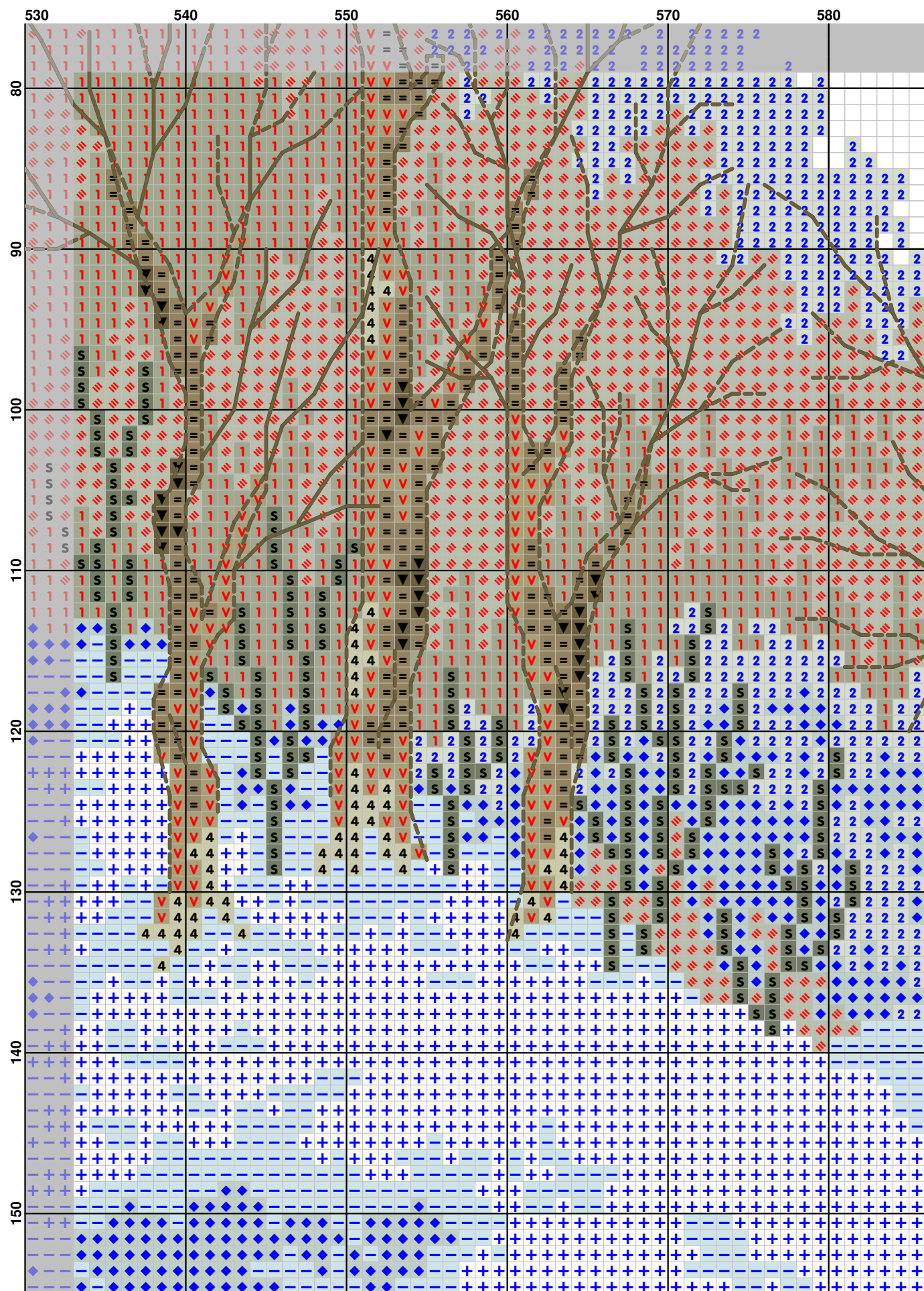
(39)

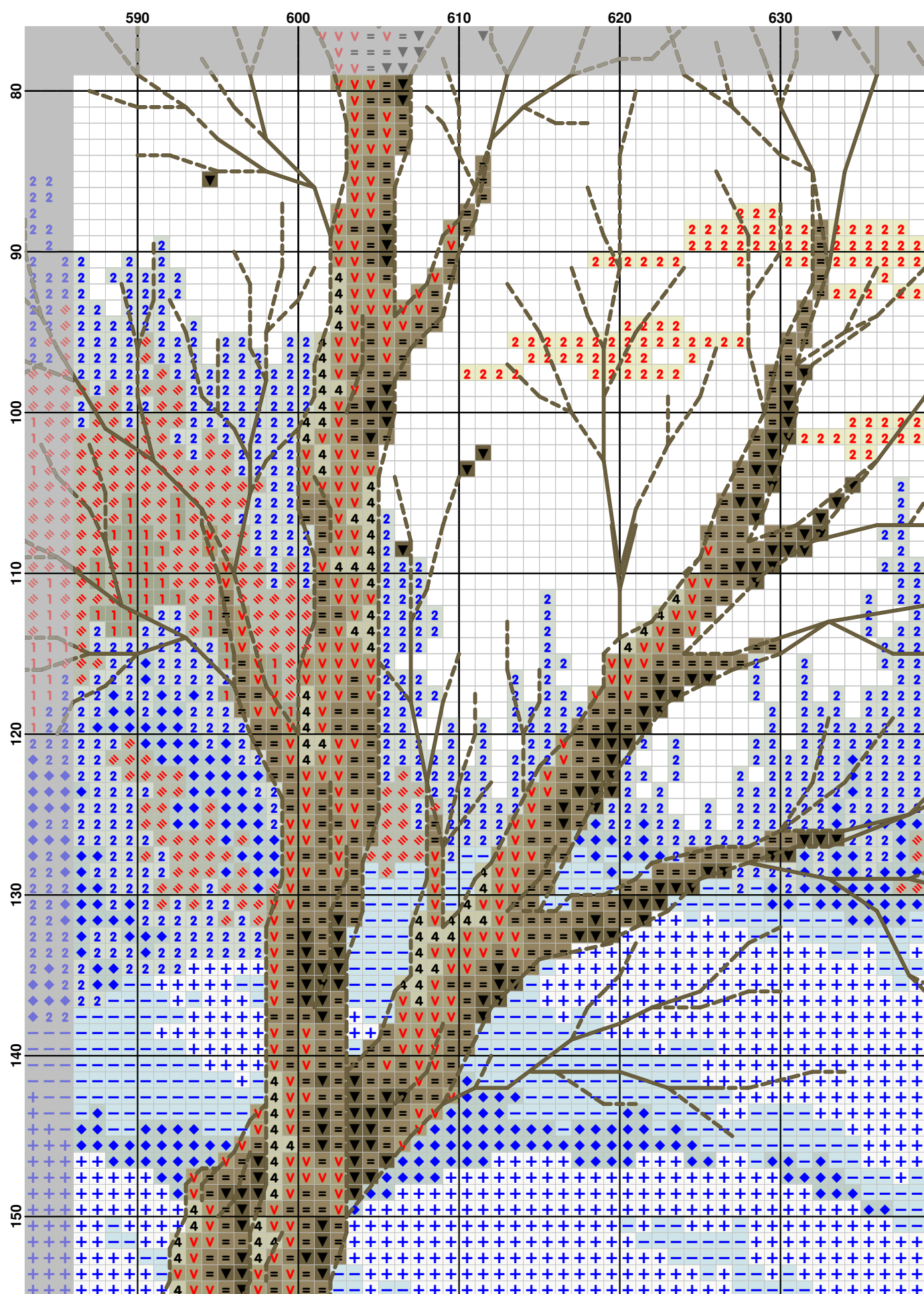
(40)

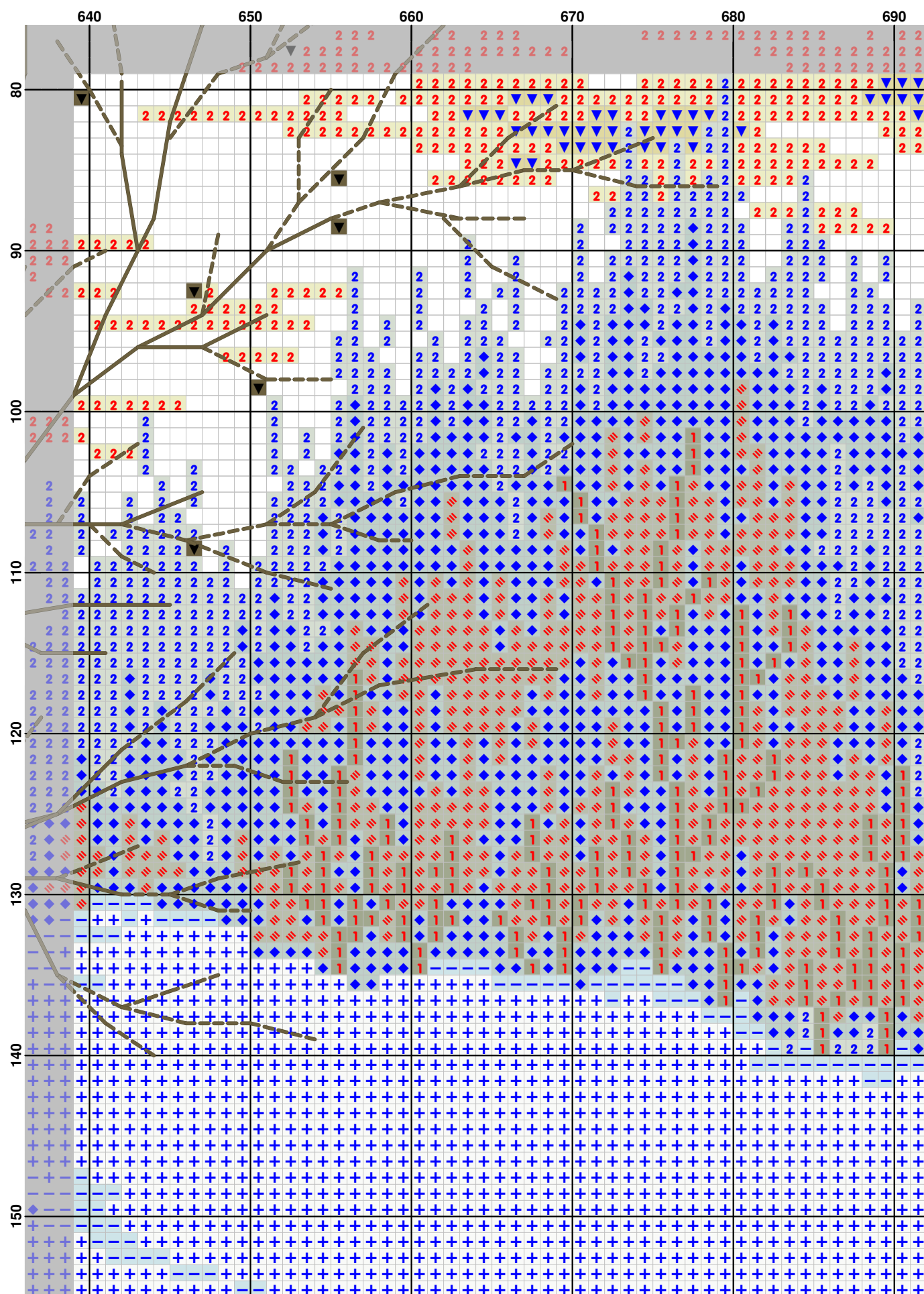
(41)

(42)

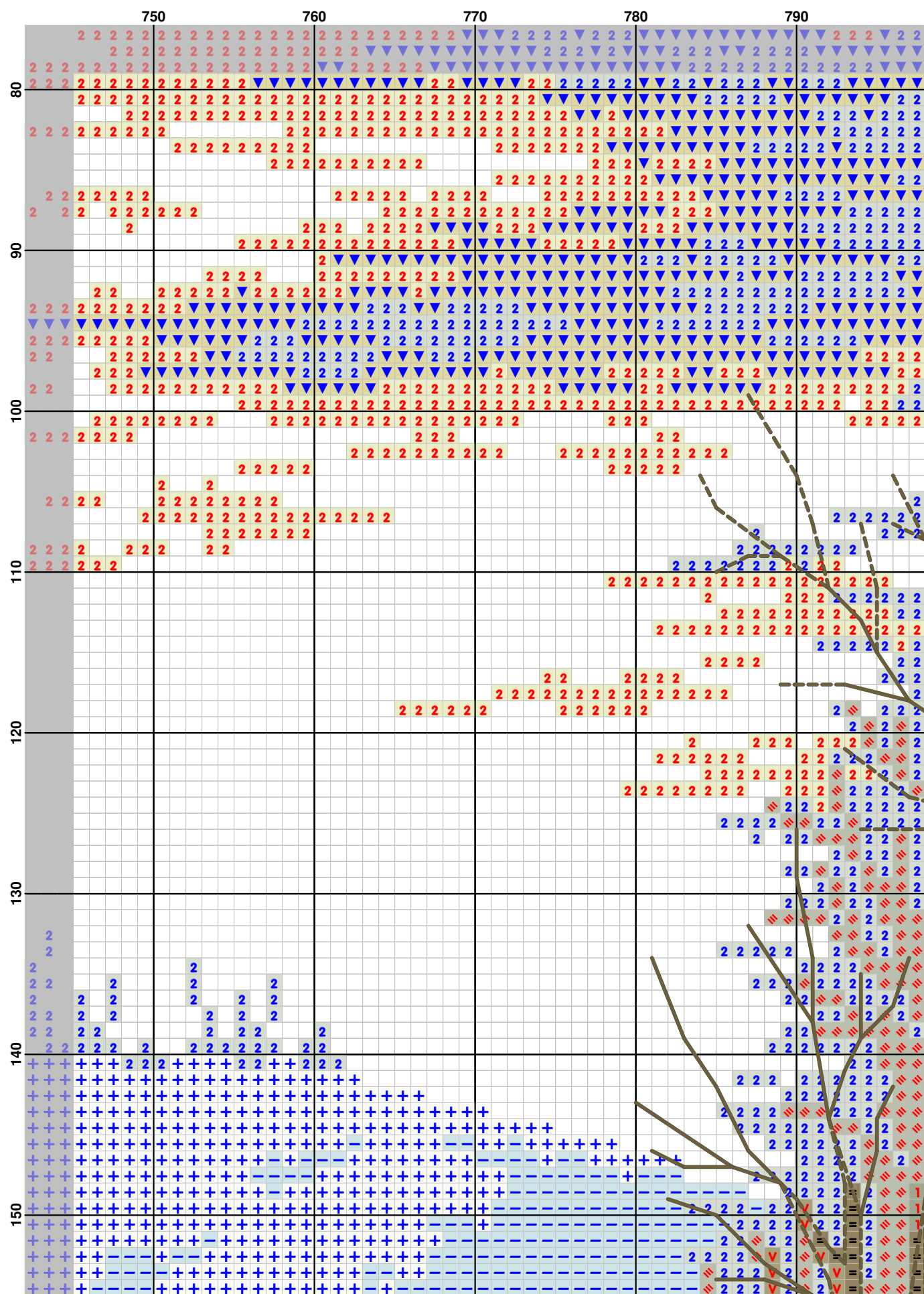
(43)

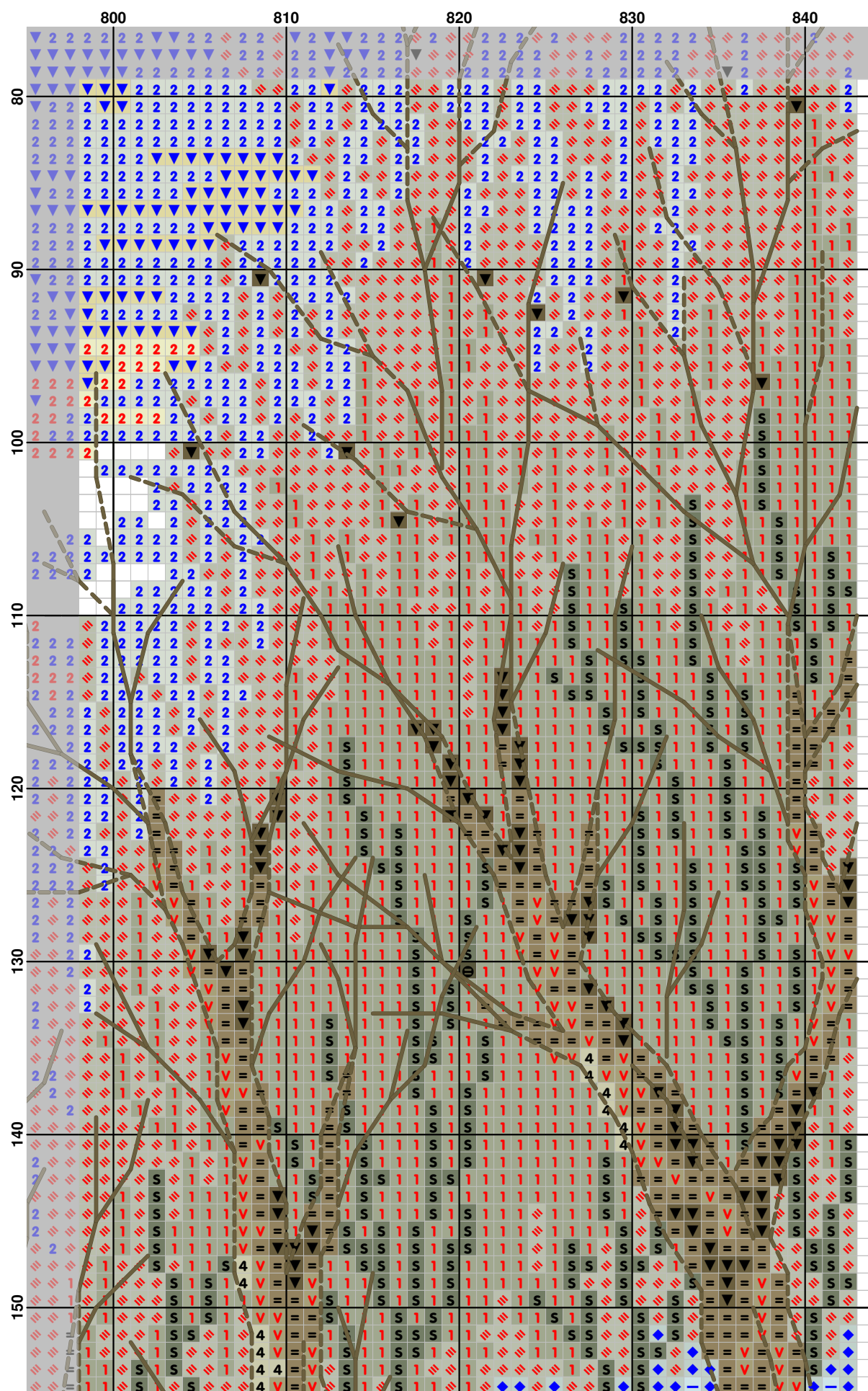




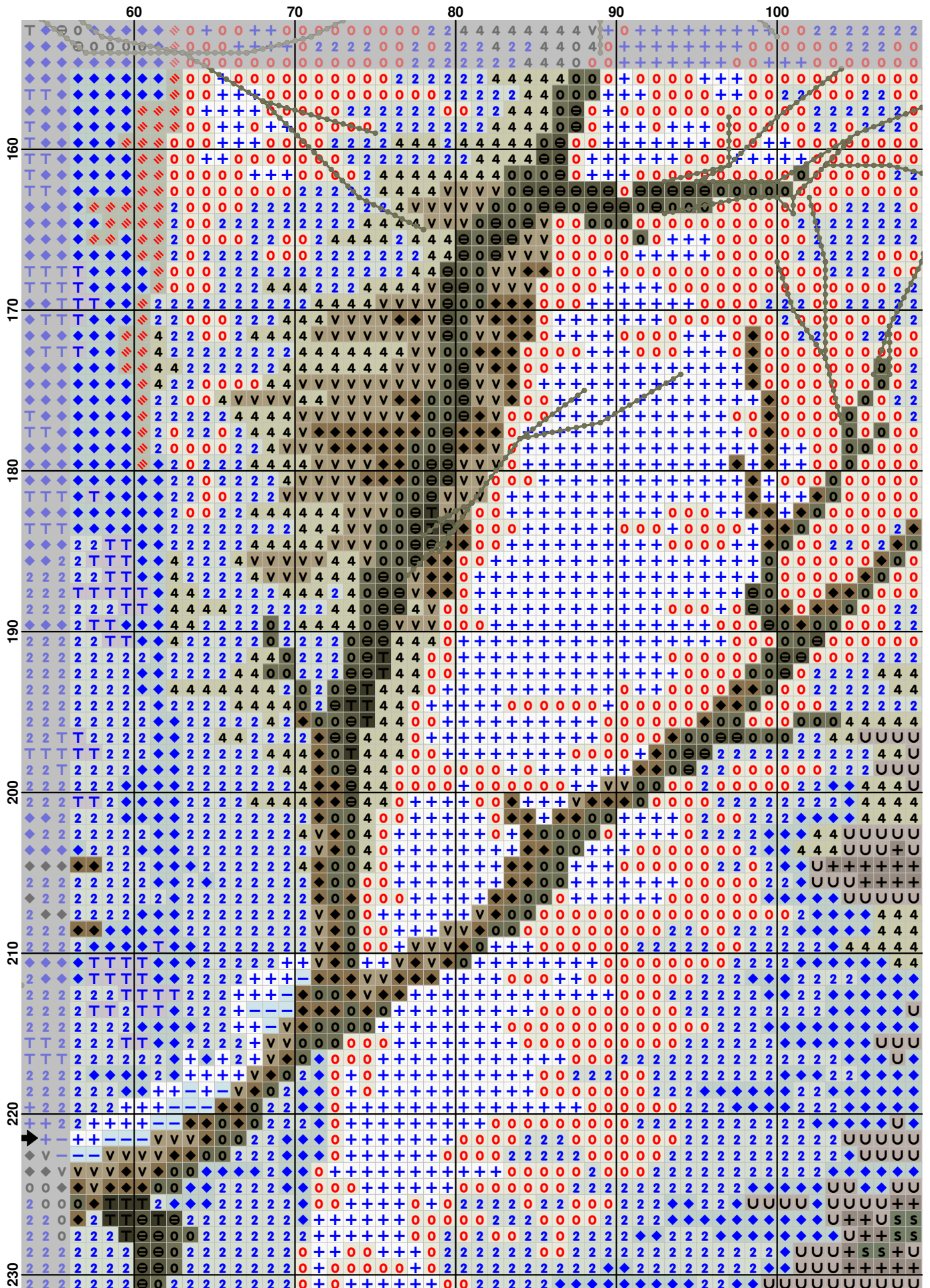


(47)









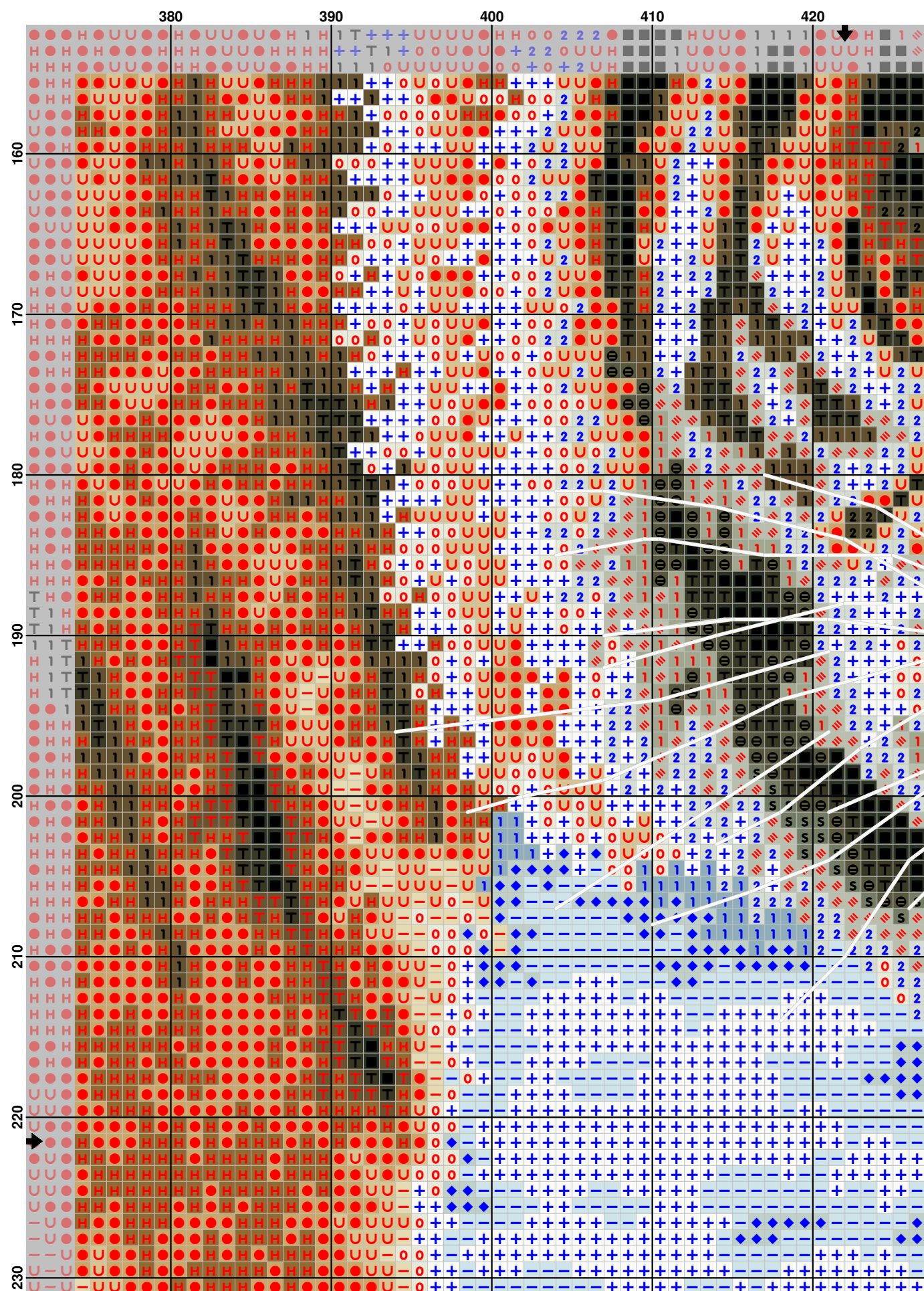
(52)

(53)

(54)

(55)

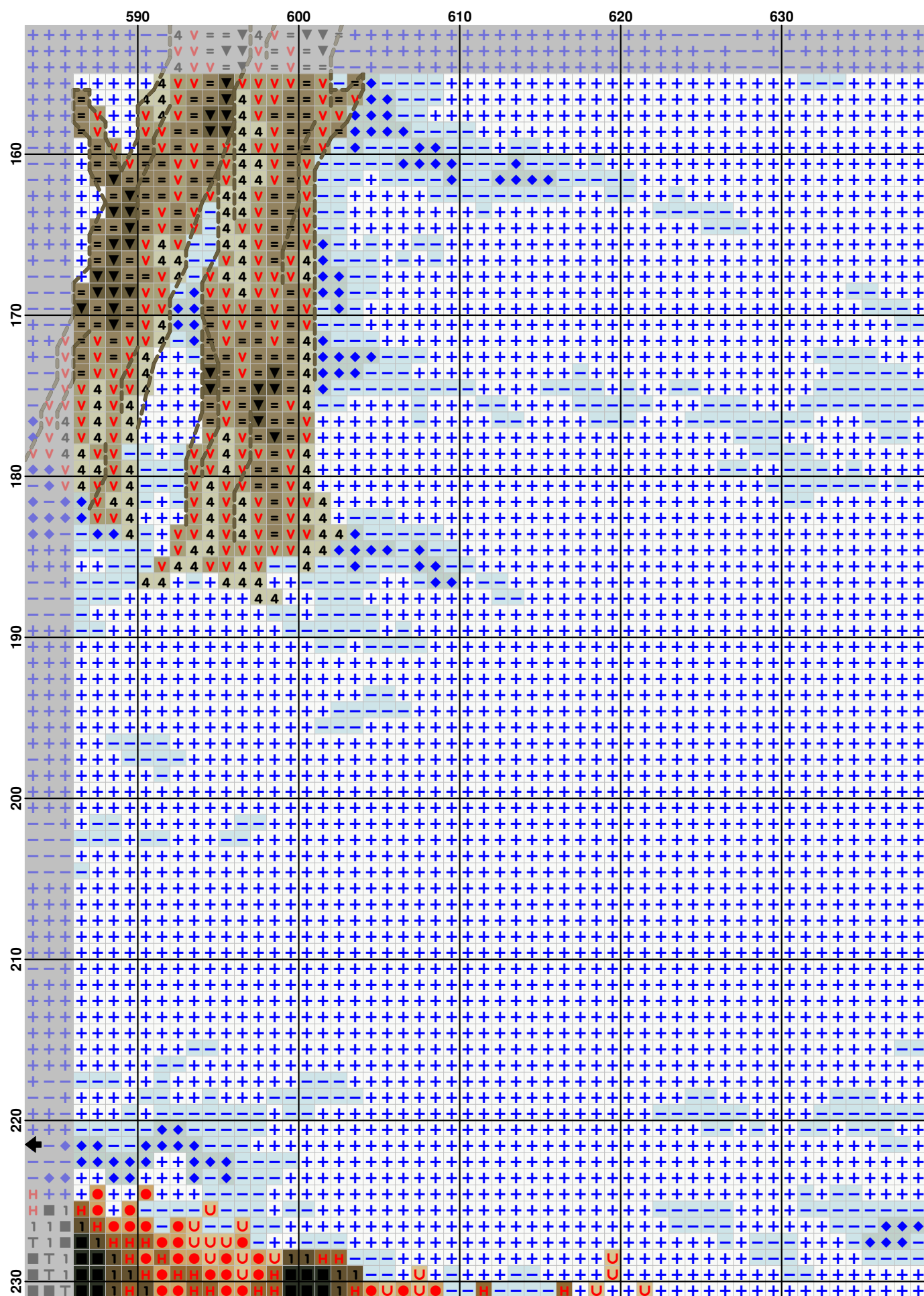
(56)

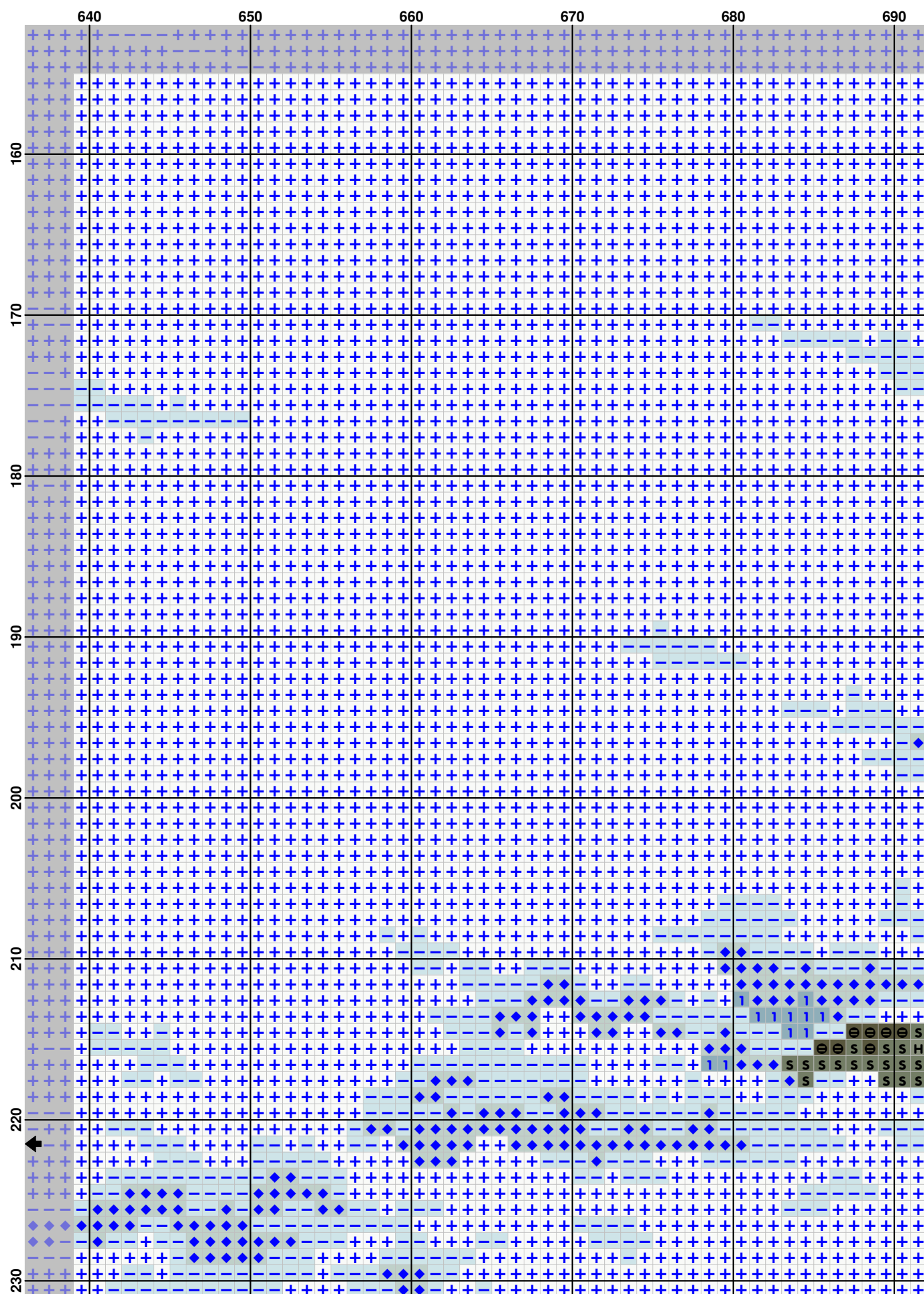


(58)

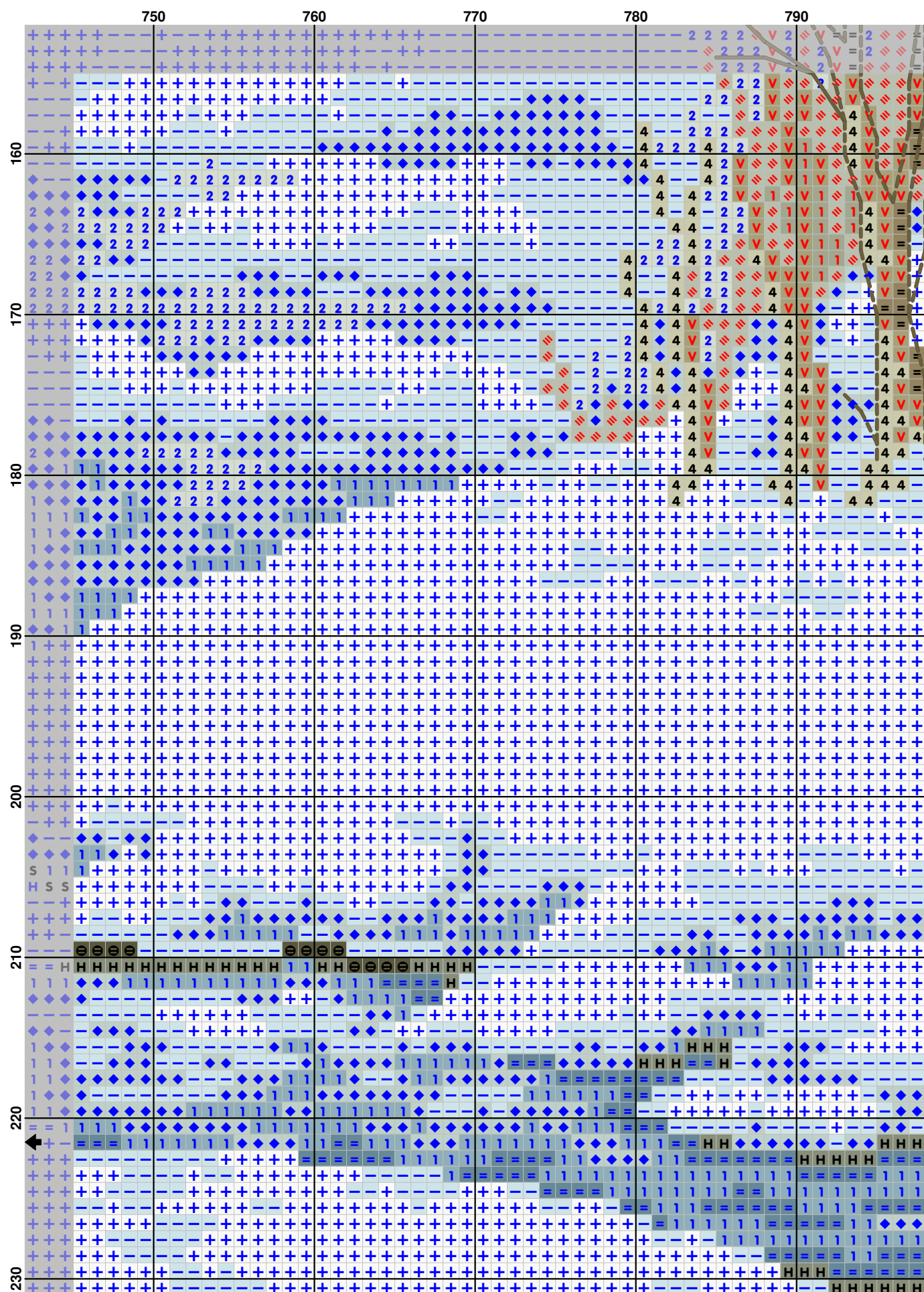
(59)







(63)





(66)

(67)

(68)

(69)

(70)

(71)

(72)

(73)

	430	440	450	460	470	480
230	+	+	+	+	+	+
240	+	+	+	+	+	+
250	+	+	+	+	+	+
260	+	+	+	+	+	+
270	+	+	+	+	+	+
280	+	+	+	+	+	+
290	+	+	+	+	+	+
300	+	+	+	+	+	+
310	+	+	+	+	+	+
320	+	+	+	+	+	+
330	+	+	+	+	+	+
340	+	+	+	+	+	+
350	+	+	+	+	+	+
360	+	+	+	+	+	+
370	+	+	+	+	+	+
380	+	+	+	+	+	+
390	+	+	+	+	+	+
400	+	+	+	+	+	+
410	+	+	+	+	+	+
420	+	+	+	+	+	+
430	+	+	+	+	+	+
440	+	+	+	+	+	+
450	+	+	+	+	+	+
460	+	+	+	+	+	+
470	+	+	+	+	+	+
480	+	+	+	+	+	+
490	+	+	+	+	+	+
500	+	+	+	+	+	+
510	+	+	+	+	+	+
520	+	+	+	+	+	+
530	+	+	+	+	+	+
540	+	+	+	+	+	+
550	+	+	+	+	+	+
560	+	+	+	+	+	+
570	+	+	+	+	+	+
580	+	+	+	+	+	+
590	+	+	+	+	+	+
600	+	+	+	+	+	+
610	+	+	+	+	+	+
620	+	+	+	+	+	+
630	+	+	+	+	+	+
640	+	+	+	+	+	+
650	+	+	+	+	+	+
660	+	+	+	+	+	+
670	+	+	+	+	+	+
680	+	+	+	+	+	+
690	+	+	+	+	+	+
700	+	+	+	+	+	+
710	+	+	+	+	+	+
720	+	+	+	+	+	+
730	+	+	+	+	+	+
740	+	+	+	+	+	+
750	+	+	+	+	+	+
760	+	+	+	+	+	+
770	+	+	+	+	+	+
780	+	+	+	+	+	+
790	+	+	+	+	+	+
800	+	+	+	+	+	+
810	+	+	+	+	+	+
820	+	+	+	+	+	+
830	+	+	+	+	+	+
840	+	+	+	+	+	+
850	+	+	+	+	+	+
860	+	+	+	+	+	+
870	+	+	+	+	+	+
880	+	+	+	+	+	+
890	+	+	+	+	+	+
900	+	+	+	+	+	+
910	+	+	+	+	+	+
920	+	+	+	+	+	+
930	+	+	+	+	+	+
940	+	+	+	+	+	+
950	+	+	+	+	+	+
960	+	+	+	+	+	+
970	+	+	+	+	+	+
980	+	+	+	+	+	+
990	+	+	+	+	+	+
1000	+	+	+	+	+	+

(75)

(76)

(77)

	640	650	660	670	680	690
230	+	+	+	+	+	+
240	+	+	+	+	+	+
250	+	+	+	+	+	+
260	+	+	+	+	+	+
270	+	+	+	+	+	+
280	+	+	+	+	+	+
290	+	+	+	+	+	+
300	+	+	+	+	+	+

	690	700	710	720	730	740
230	+	+	+	+	+	+
240	+	+	+	+	+	+
250	+	+	+	+	+	+
260	+	+	+	+	+	+
270	+	+	+	+	+	+
280	+	+	+	+	+	+
290	+	+	+	+	+	+
300	+	+	+	+	+	+

(80)

(80)

(82)

(83)

(84)

	160	170	180	190	200	210
310	T	T	T	T	T	T
320	T	T	T	T	T	T
330	T	T	T	T	T	T
340	T	T	T	T	T	T
350	T	T	T	T	T	T
360	T	T	T	T	T	T
370	T	T	T	T	T	T
380	T	T	T	T	T	T
390	T	T	T	T	T	T
400	T	T	T	T	T	T
410	T	T	T	T	T	T
420	T	T	T	T	T	T
430	T	T	T	T	T	T
440	T	T	T	T	T	T
450	T	T	T	T	T	T
460	T	T	T	T	T	T
470	T	T	T	T	T	T
480	T	T	T	T	T	T
490	T	T	T	T	T	T
500	T	T	T	T	T	T
510	T	T	T	T	T	T
520	T	T	T	T	T	T
530	T	T	T	T	T	T
540	T	T	T	T	T	T
550	T	T	T	T	T	T
560	T	T	T	T	T	T
570	T	T	T	T	T	T
580	T	T	T	T	T	T
590	T	T	T	T	T	T
600	T	T	T	T	T	T
610	T	T	T	T	T	T
620	T	T	T	T	T	T
630	T	T	T	T	T	T
640	T	T	T	T	T	T
650	T	T	T	T	T	T
660	T	T	T	T	T	T
670	T	T	T	T	T	T
680	T	T	T	T	T	T
690	T	T	T	T	T	T
700	T	T	T	T	T	T
710	T	T	T	T	T	T
720	T	T	T	T	T	T
730	T	T	T	T	T	T
740	T	T	T	T	T	T
750	T	T	T	T	T	T
760	T	T	T	T	T	T
770	T	T	T	T	T	T
780	T	T	T	T	T	T
790	T	T	T	T	T	T
800	T	T	T	T	T	T
810	T	T	T	T	T	T
820	T	T	T	T	T	T
830	T	T	T	T	T	T
840	T	T	T	T	T	T
850	T	T	T	T	T	T
860	T	T	T	T	T	T
870	T	T	T	T	T	T
880	T	T	T	T	T	T
890	T	T	T	T	T	T
900	T	T	T	T	T	T
910	T	T	T	T	T	T
920	T	T	T	T	T	T
930	T	T	T	T	T	T
940	T	T	T	T	T	T
950	T	T	T	T	T	T
960	T	T	T	T	T	T
970	T	T	T	T	T	T
980	T	T	T	T	T	T
990	T	T	T	T	T	T
1000	T	T	T	T	T	T

(86)

	270	280	290	300	310	320
310	+	+	+	+	+	+
320	+	+	+	+	+	+
330	+	+	+	+	+	+
340	+	+	+	+	+	+
350	+	+	+	+	+	+
360	+	+	+	+	+	+
370	+	+	+	+	+	+
380	+	+	+	+	+	+
390	+	+	+	+	+	+
400	+	+	+	+	+	+
410	+	+	+	+	+	+
420	+	+	+	+	+	+
430	+	+	+	+	+	+
440	+	+	+	+	+	+
450	+	+	+	+	+	+
460	+	+	+	+	+	+
470	+	+	+	+	+	+
480	+	+	+	+	+	+
490	+	+	+	+	+	+
500	+	+	+	+	+	+
510	+	+	+	+	+	+
520	+	+	+	+	+	+
530	+	+	+	+	+	+
540	+	+	+	+	+	+
550	+	+	+	+	+	+
560	+	+	+	+	+	+
570	+	+	+	+	+	+
580	+	+	+	+	+	+
590	+	+	+	+	+	+
600	+	+	+	+	+	+
610	+	+	+	+	+	+
620	+	+	+	+	+	+
630	+	+	+	+	+	+
640	+	+	+	+	+	+
650	+	+	+	+	+	+
660	+	+	+	+	+	+
670	+	+	+	+	+	+
680	+	+	+	+	+	+
690	+	+	+	+	+	+
700	+	+	+	+	+	+
710	+	+	+	+	+	+
720	+	+	+	+	+	+
730	+	+	+	+	+	+
740	+	+	+	+	+	+
750	+	+	+	+	+	+
760	+	+	+	+	+	+
770	+	+	+	+	+	+
780	+	+	+	+	+	+
790	+	+	+	+	+	+
800	+	+	+	+	+	+
810	+	+	+	+	+	+
820	+	+	+	+	+	+
830	+	+	+	+	+	+
840	+	+	+	+	+	+
850	+	+	+	+	+	+
860	+	+	+	+	+	+
870	+	+	+	+	+	+
880	+	+	+	+	+	+
890	+	+	+	+	+	+
900	+	+	+	+	+	+
910	+	+	+	+	+	+
920	+	+	+	+	+	+
930	+	+	+	+	+	+
940	+	+	+	+	+	+
950	+	+	+	+	+	+
960	+	+	+	+	+	+
970	+	+	+	+	+	+
980	+	+	+	+	+	+
990	+	+	+	+	+	+
1000	+	+	+	+	+	+

(88)

(89)

(90)

(91)

(92)

(93)

(94)

(95)

(96)

(96)

	60	70	80	90	100
380	+	+	+	+	+
390	+	+	+	+	+
400	+	+	+	+	+
410	+	+	+	+	+
420	+	+	+	+	+
430	+	+	+	+	+
440	+	+	+	+	+

[illegible]

The image displays a large grid of 100 rows and 10 columns. The rows are labeled on the left side from 380 to 440 in increments of 10. The columns are labeled on the top side from 170 to 210 in increments of 10. The grid is filled with various symbols, including blue diamonds, red 'H's, black 'T's, and numbers '1' and '+'. The symbols are arranged in a complex, repeating pattern across the grid, with some cells containing multiple symbols or being empty. The pattern appears to be a combination of random and structured elements, possibly representing a data set or a visual encoding.

[illegible]

[illegible]

[illegible]

[illegible]

[illegible]

[illegible]

[illegible]

[illegible]

[illegible]

[illegible]

[illegible]

[illegible]

Pattern Name: тигры бенгальские
Designed By: перенабор Олми
Company: DOME 70702
Fabric: Aida 14, Rue
 842w X 441h Stitches
Size: 14 Count, 152.76w X 80.01h cm



Floss Used for Full Stitches:

Symbol	Strands	Type	Number	Color
	2	DMC	223	Shell Pink-LT
	2	DMC	224	Shell Pink-VY LT
	2	DMC	310	Black
	2	DMC	315	Antique Mauve-VY DK
	2	DMC	434	Brown-LT
	2	DMC	436	Tan
	2	DMC	451	Shell Gray-DK
	2	DMC	452	Shell Gray-MD
	2	DMC	640	Beige Gray-DK
	2	DMC	642	Beige Gray-DK MD
	2	DMC	644	Beige Gray-MD
	2	DMC	645	Beaver Gray-VY DK
	2	DMC	646	Beaver Gray-DK
	2	DMC	647	Beaver Gray-MD
	2	DMC	648	Beaver Gray-LT
	2	DMC	677	Old Gold-VY LT
	2	DMC	712	Cream
	2	DMC	738	Tan-VY LT
	2	DMC	739	Tan-UL VY LT
	2	DMC	775	Baby Blue-VY LT
	2	DMC	801	Coffee Brown-DK
	2	DMC	840	Beige Brown-MD
	2	DMC	841	Beige Brown-LT
	2	DMC	844	Beaver Brown-UL DK
	2	DMC	898	Coffee Brown-VY DK
	2	DMC	902	Antique Mauve-VY DK
	2	DMC	924	Gray Green--VY DK
	2	DMC	928	Gray Green-VY LT
	2	DMC	930	Antique Blue-DK
	2	DMC	931	Antique Blue-MD
	2	DMC	932	Antique Blue-LT
	2	DMC	3021	Beige Gray-VY VY DK
	2	DMC	3031	Mocha Brown-VY DK
	2	DMC	3032	Mocha Brown-MD
	2	DMC	3072	Beaver Gray-VY LT
	2	DMC	3371	Black Brown
	2	DMC	3722	Shell Pink-MD
	2	DMC	3743	Antique Violet-VY LT
	2	DMC	3781	Mocha Brown-DK
	2	DMC	3787	Beige Gray-VY DK
	2	DMC	3823	Yellow-UL Pale
	2	DMC	3862	Mocha Beige-DK
	2	DMC	3865	Winter White

Floss Used for Back Stitches:

Symbol	Strands	Type	Number	Color
	2	DMC	310	Black
	1	DMC	738	Tan-VY LT
	2	DMC	739	Tan-UL VY LT
	2	DMC	841	Beige Brown-LT
	2	DMC	3781	Mocha Brown-DK
	2	DMC	3787	Beige Gray-VY DK
	2	DMC	3865	Winter White

Floss Used for Straight Stitches:

Symbol	Strands	Type	Number	Color
	1	DMC	3781	Mocha Brown-DK
	1	DMC	3865	Winter White

Расход нитей

Нитей в мотке: 6

Длина мотка: 795.0 cm

Type	Number	Full	Half	Quarter	Petite	Back(cm)	Str(cm)	Spec(cm)	French	Bead	Skein Est
DMC	223	19	0	0	0	0.0	0.0	0.0	0	0	1.000
DMC	224	9	0	0	0	0.0	0.0	0.0	0	0	1.000
DMC	310	10733	0	0	0	2.9	0.0	0.0	0	0	5.000
DMC	315	38	0	0	0	0.0	0.0	0.0	0	0	1.000
DMC	434	17931	0	0	0	0.0	0.0	0.0	0	0	8.000
DMC	436	16619	0	0	0	0.0	0.0	0.0	0	0	8.000
DMC	451	166	0	0	0	0.0	0.0	0.0	0	0	1.000
DMC	452	529	0	0	0	0.0	0.0	0.0	0	0	1.000
DMC	640	1057	0	0	0	0.0	0.0	0.0	0	0	1.000
DMC	642	1462	0	0	0	0.0	0.0	0.0	0	0	1.000
DMC	644	9757	0	0	0	0.0	0.0	0.0	0	0	5.000
DMC	645	6843	0	0	0	0.0	0.0	0.0	0	0	3.000
DMC	646	222	0	0	0	0.0	0.0	0.0	0	0	1.000
DMC	647	12980	0	0	0	0.0	0.0	0.0	0	0	6.000
DMC	648	15154	0	0	0	0.0	0.0	0.0	0	0	7.000
DMC	677	1382	0	0	0	0.0	0.0	0.0	0	0	1.000
DMC	712	4888	0	0	0	0.0	0.0	0.0	0	0	3.000
DMC	738	8889	0	0	0	2.5	0.0	0.0	0	0	4.000
DMC	739	3263	0	0	0	2.4	0.0	0.0	0	0	2.000
DMC	775	22566	0	0	0	0.0	0.0	0.0	0	0	10.000
DMC	801	3598	0	0	0	0.0	0.0	0.0	0	0	2.000
DMC	840	959	0	0	0	0.0	0.0	0.0	0	0	1.000
DMC	841	7873	0	0	0	2.8	0.0	0.0	0	0	4.000
DMC	844	2247	0	0	0	0.0	0.0	0.0	0	0	1.000
DMC	898	9145	0	0	0	0.0	0.0	0.0	0	0	4.000
DMC	902	16	0	0	0	0.0	0.0	0.0	0	0	1.000
DMC	924	37	0	0	0	0.0	0.0	0.0	0	0	1.000
DMC	928	20759	0	0	0	0.0	0.0	0.0	0	0	9.000
DMC	930	510	0	0	0	0.0	0.0	0.0	0	0	1.000
DMC	931	2904	0	0	0	0.0	0.0	0.0	0	0	2.000
DMC	932	6252	0	0	0	0.0	0.0	0.0	0	0	3.000
DMC	3021	7445	0	0	0	0.0	0.0	0.0	0	0	4.000
DMC	3031	234	0	0	0	0.0	0.0	0.0	0	0	1.000
DMC	3032	943	0	0	0	0.0	0.0	0.0	0	0	1.000
DMC	3072	20362	0	0	0	0.0	0.0	0.0	0	0	9.000
DMC	3371	9711	0	0	0	0.0	0.0	0.0	0	0	5.000
DMC	3722	35	0	0	0	0.0	0.0	0.0	0	0	1.000
DMC	3743	853	0	0	0	0.0	0.0	0.0	0	0	1.000
DMC	3781	312	0	0	0	112.1	280.8	0.0	0	0	1.000
DMC	3787	4596	0	0	0	63.2	0.0	0.0	0	0	3.000
DMC	3823	4824	0	0	0	0.0	0.0	0.0	0	0	3.000
DMC	3862	6343	0	0	0	0.0	0.0	0.0	0	0	3.000
DMC	3865	103291	0	0	0	53.9	64.4	0.0	0	0	45.000