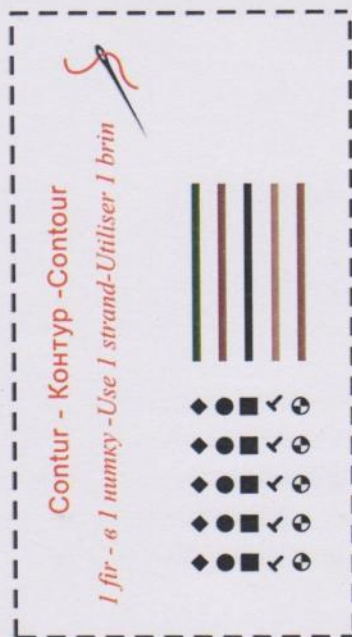


40 cm



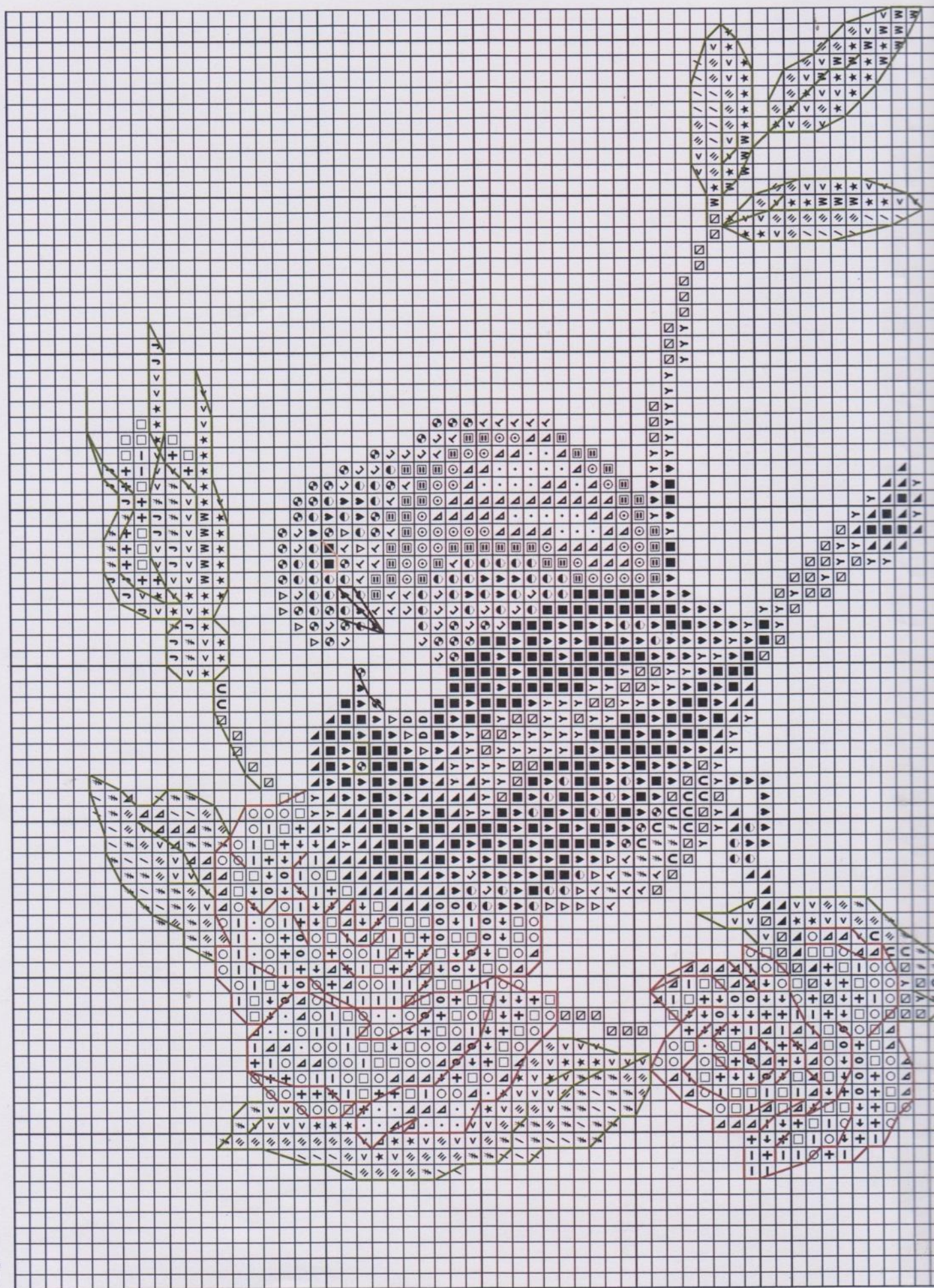
40 cm

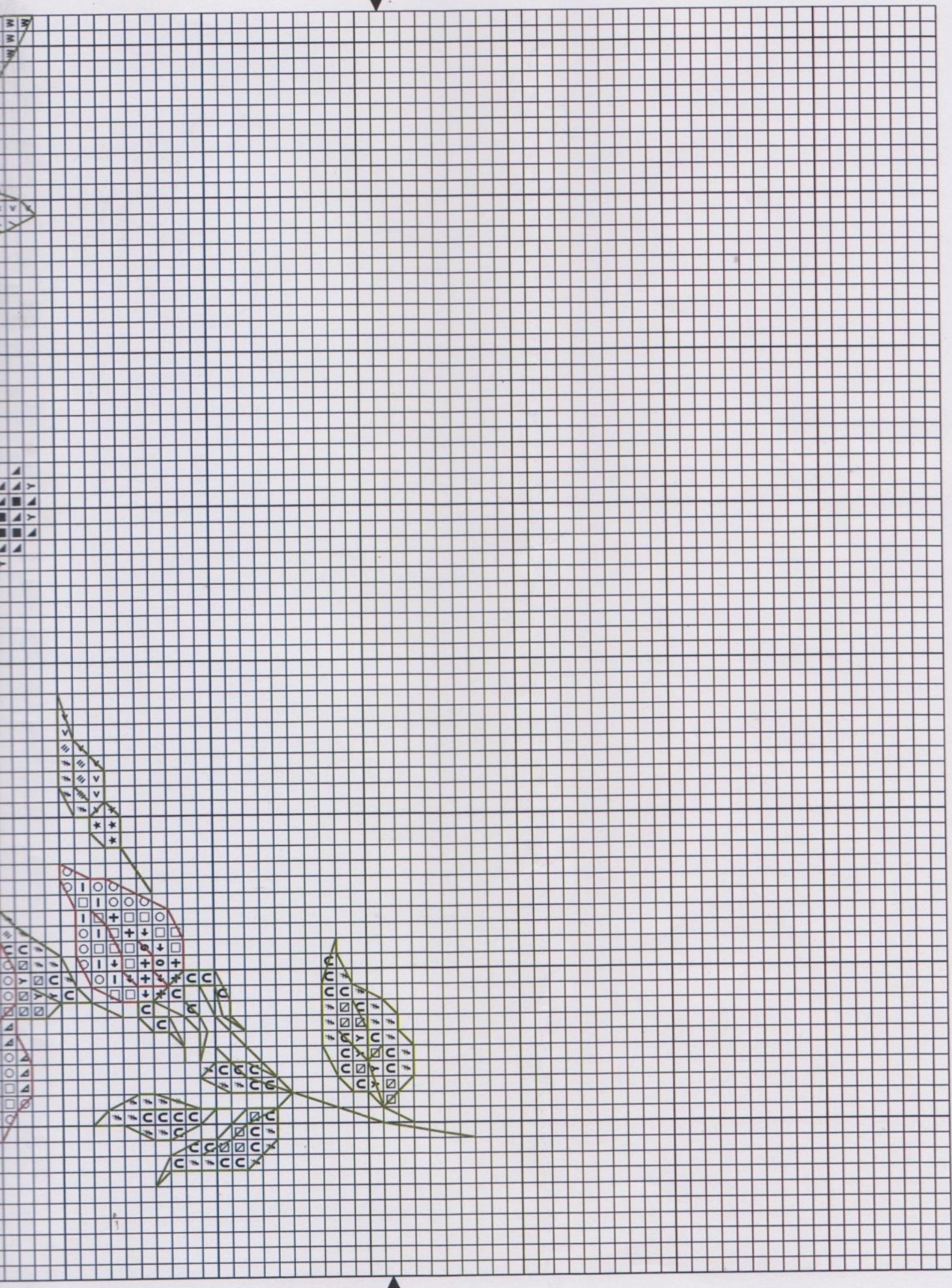


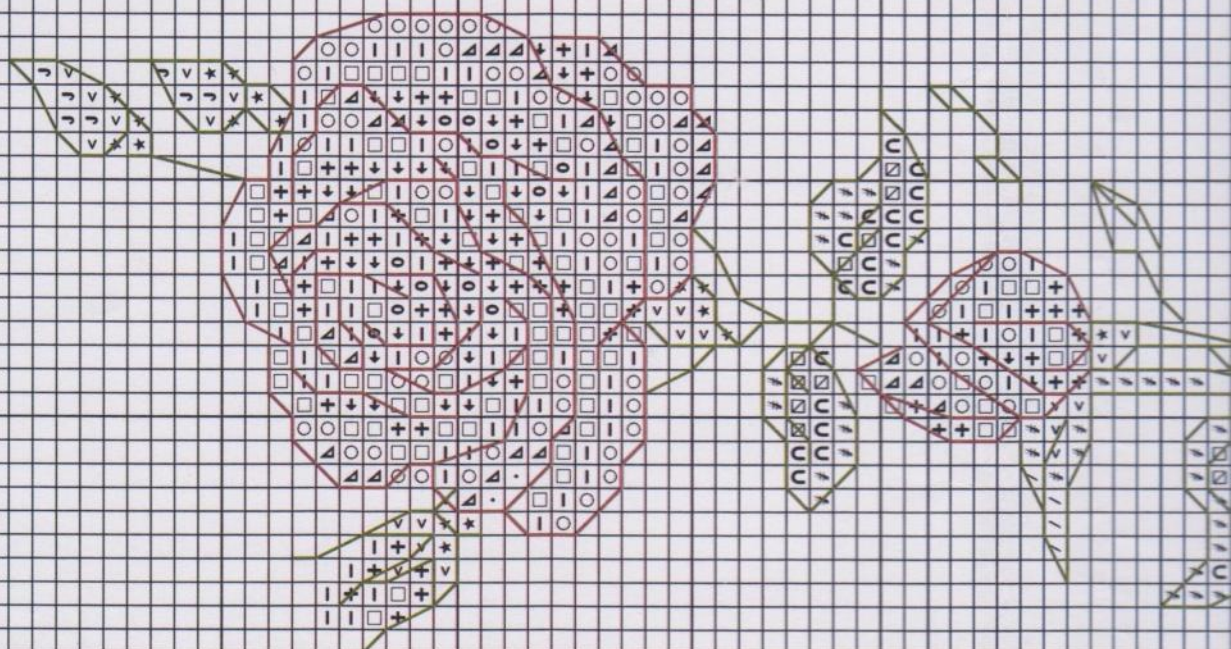
! Pentru cusut, lăsa-ți câte 1 centimetru din fiecare parte.

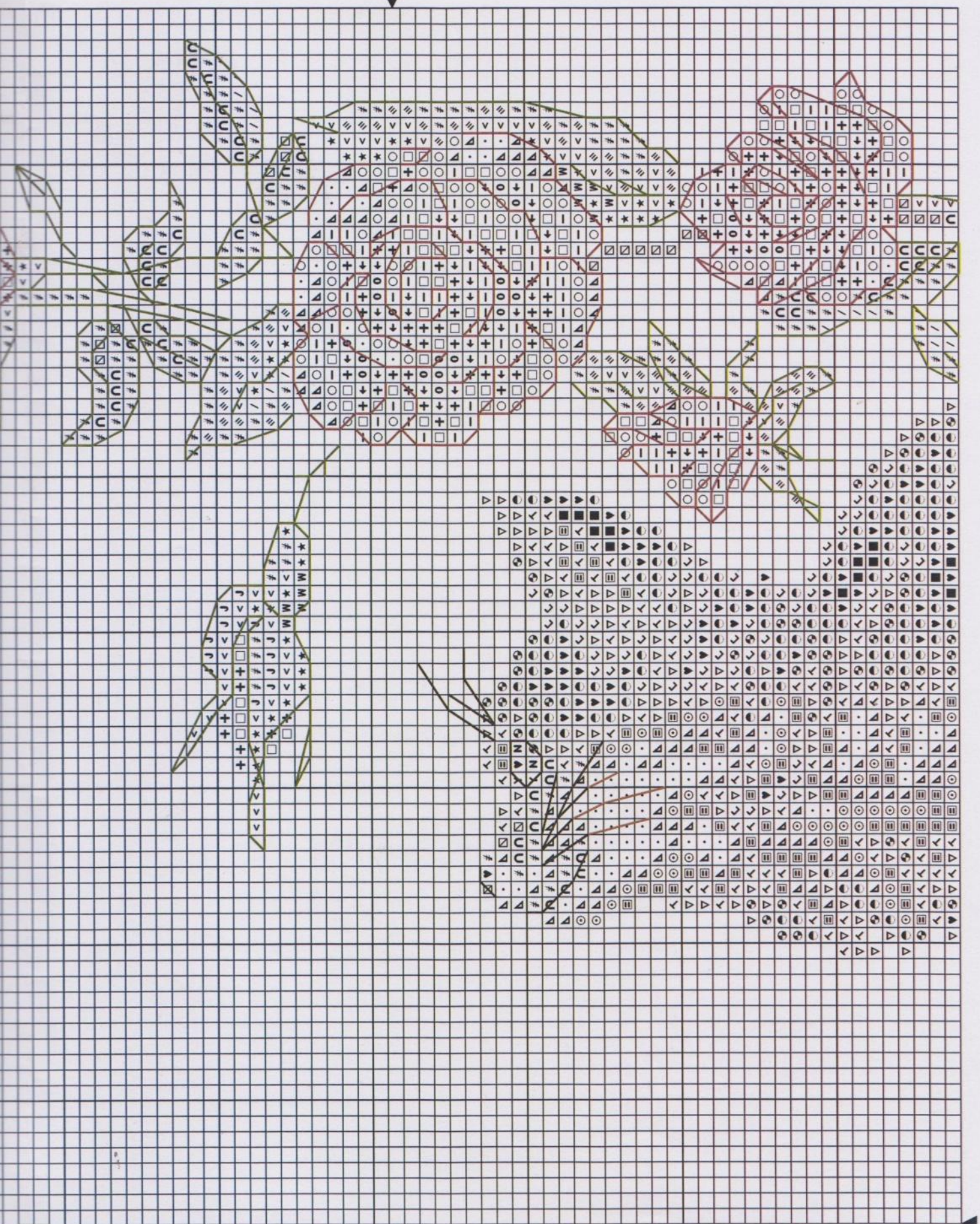
! For sewing leave 1 centimeter from each side.

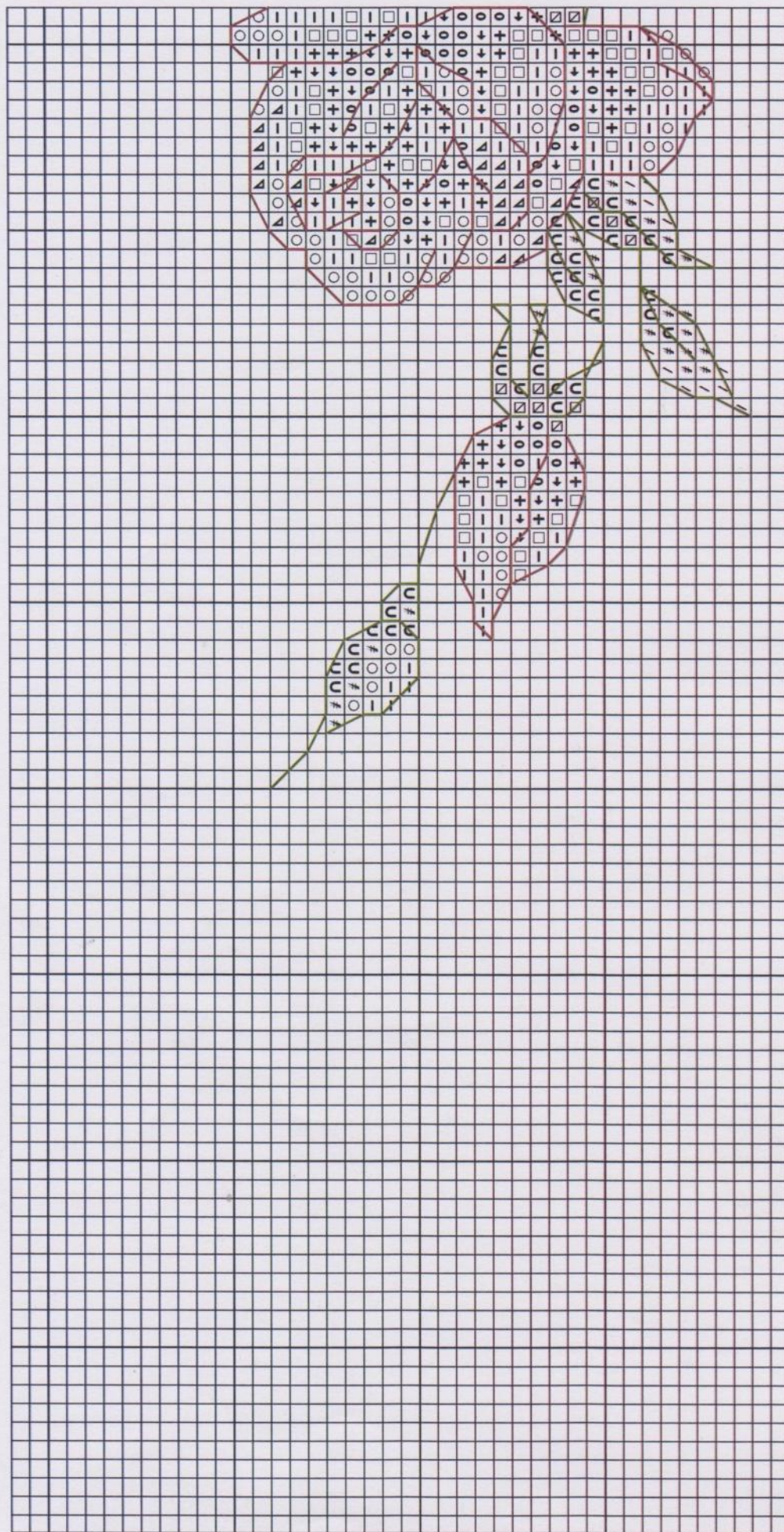
! Для пошива необходимо оставить по 1 см запаса с каждой стороны.

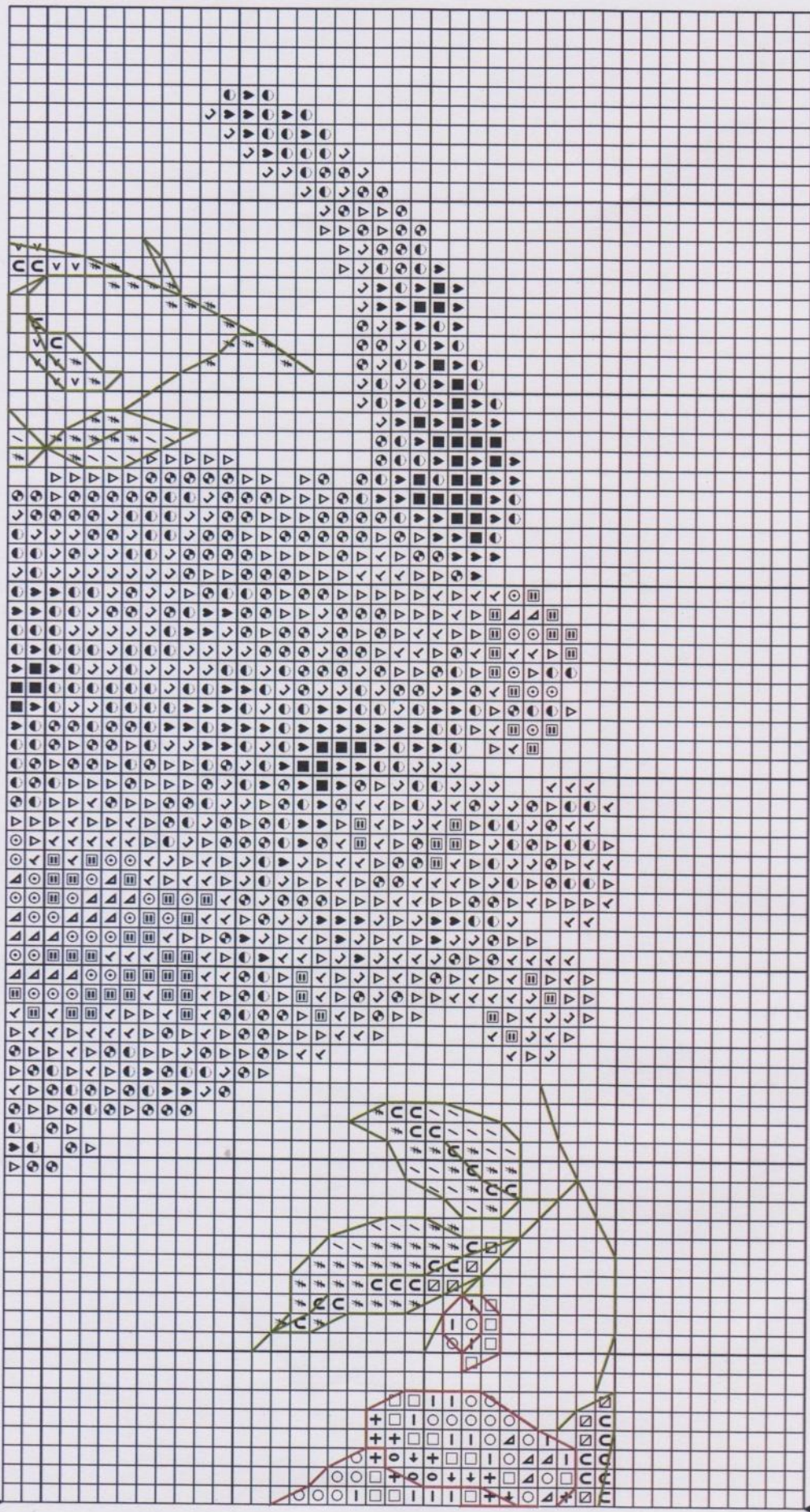






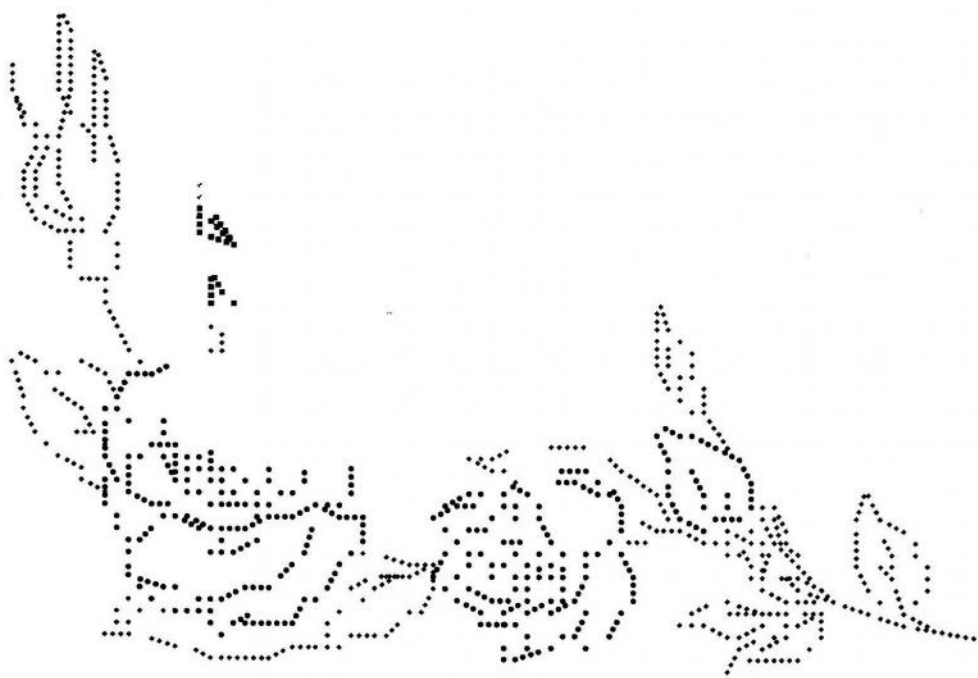


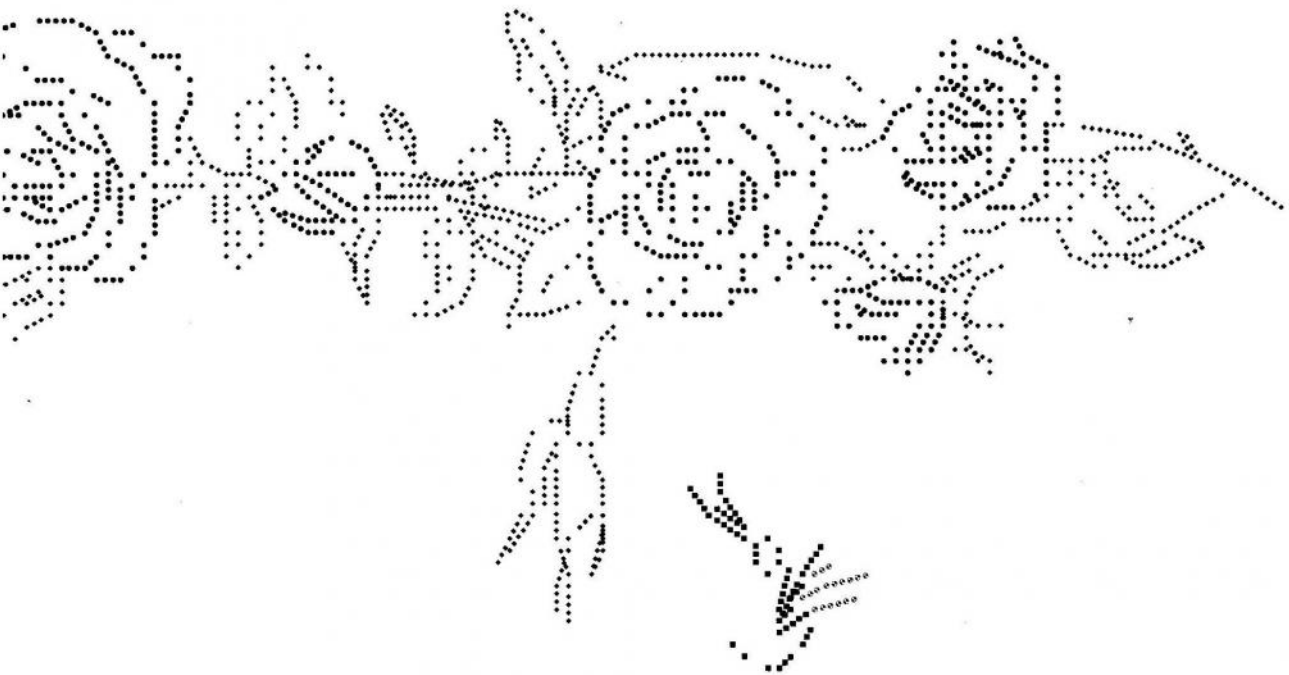




40 cm







 N *DMC Luca-S 3810*
 D 741
 W 937
 J 3348
 413
 Y 169
 / 3756
 O 309
 2 951
 ★ 987
 • белоснеж
 □ ж 169 светлее


 III *DMC Luca-S 369*
 II 353
 C 927
 < 368
 ← 1460
 L 434
 ■ 938
 Contur - Контур - Contour
1 fir - a 1 нитку - Use 1 strand - Utiliser 1 brin
 950
 Contur - Контур - Contour
1 fir - a 1 нитку - Use 1 strand - Utiliser 1 brin
 3826
 + 3779


 *DMC Luca-S 898*
 436
 светлее 7410
 3862
 - 963
 O 225
 # 3813
 605
 777
 Contur - Контур - Contour
 909
 Contur - Контур - Contour
